

# RUNWAY SAFETY OFFICE MONTHLY BRIEFING

Through July 31, 2010

Date: August 6, 2010



Federal Aviation  
Administration



# CONTENTS

- **National Overview**
  - RI's by month relative to performance reference
  - RI Pilot deviations by month
  - RI's by line-of-business
  - RI's by type, PD's by operation
- **Service Area Overview**
- **Regional Overview**
  - RI's by month relative to performance reference
  - RI's by type

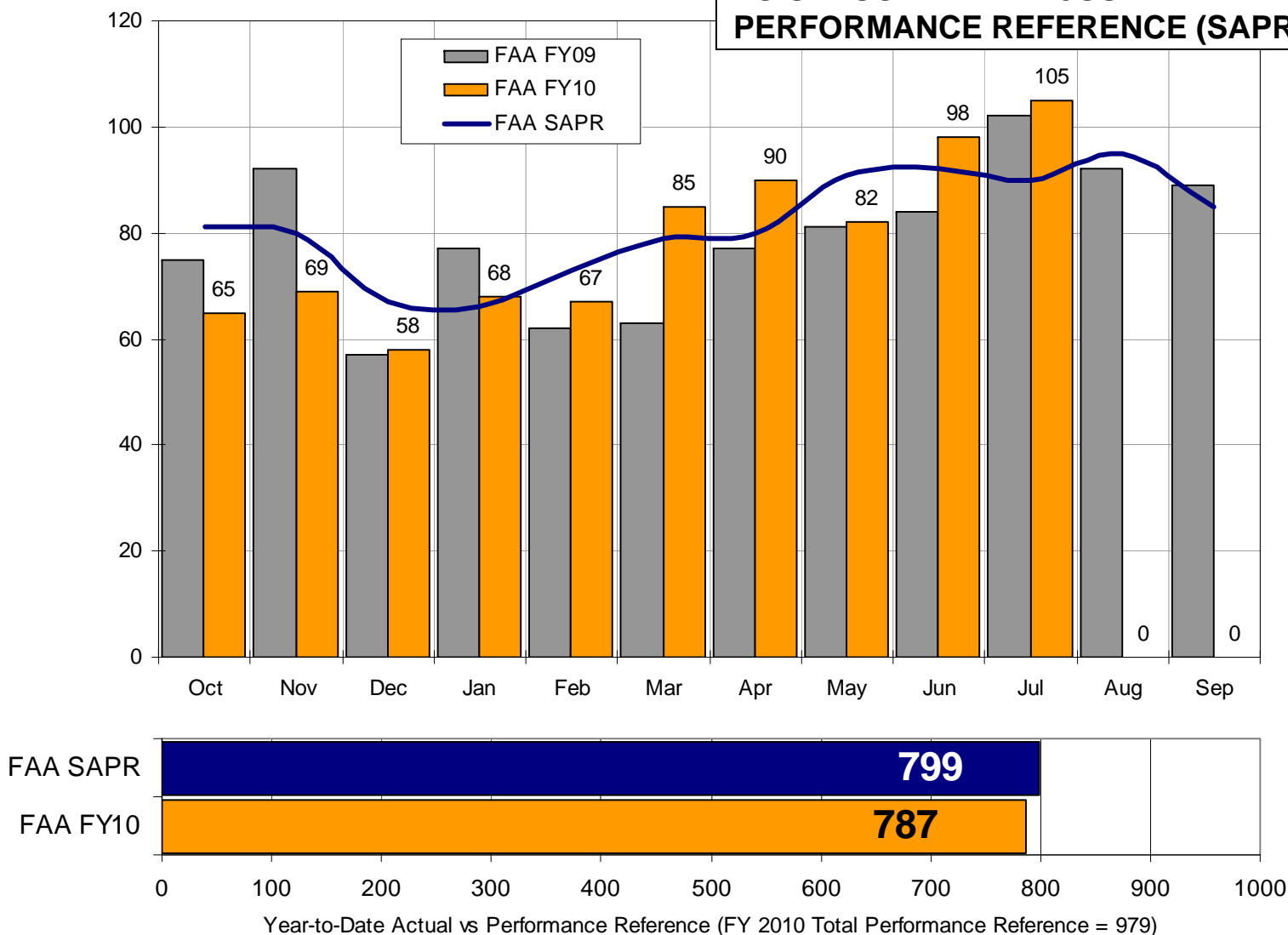


# NATIONAL OVERVIEW

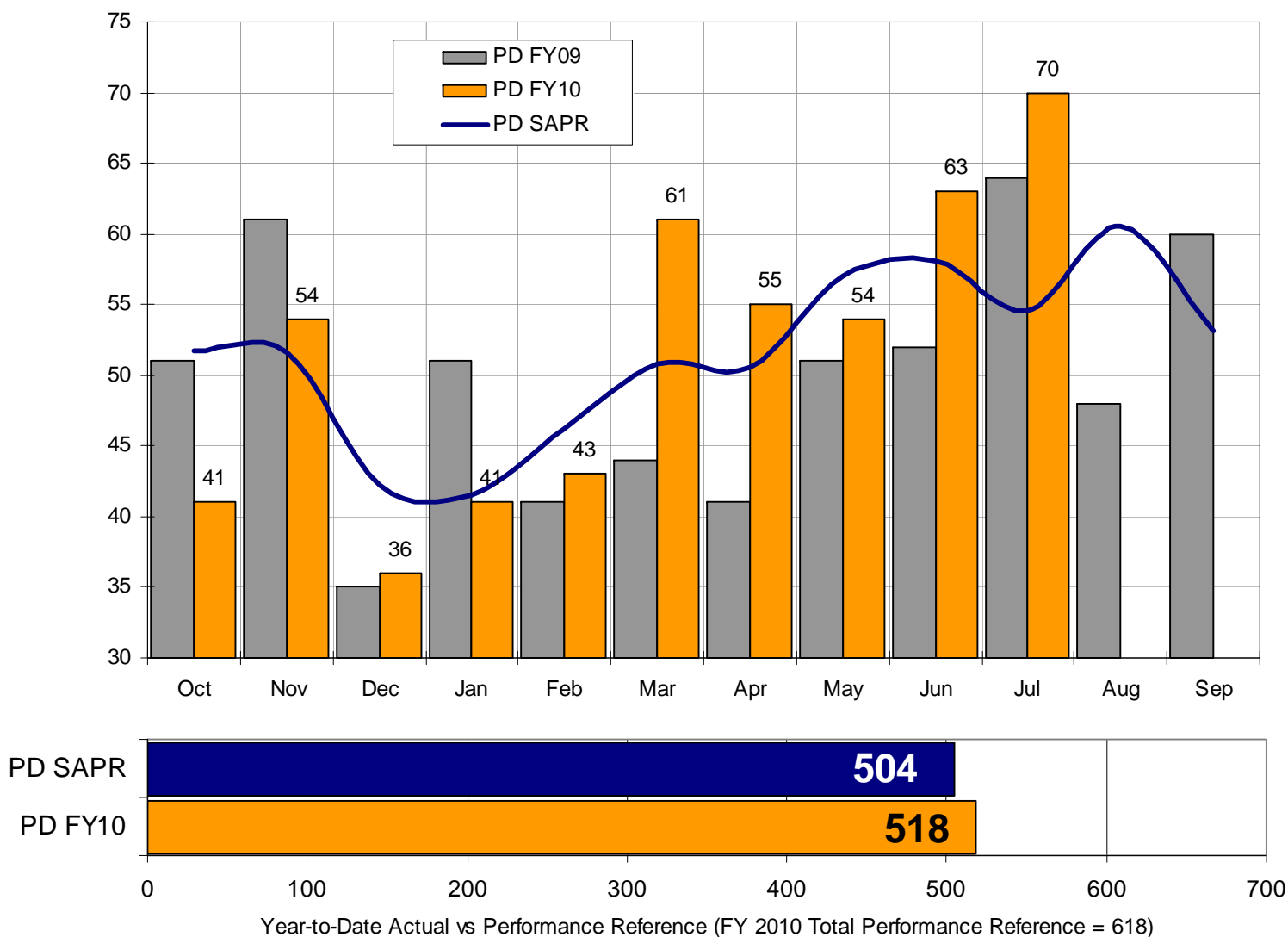


# NATIONAL OVERVIEW

**FY2010 MONTHLY RI COUNT COMPARED TO SEASONALLY ADJUSTED PERFORMANCE REFERENCE (SAPR)**



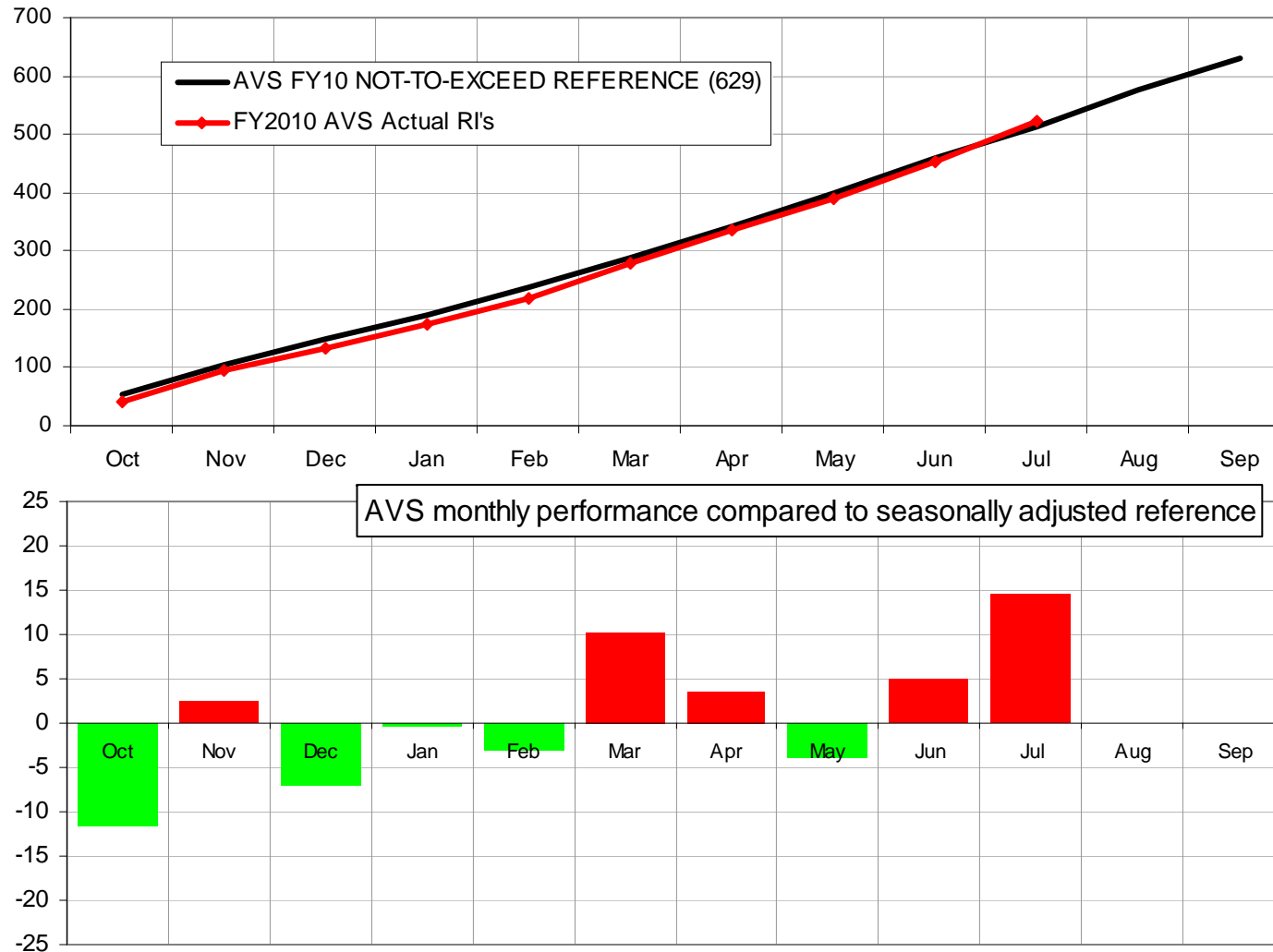
# FY2010 MONTHLY PILOT DEVIATION RI COUNT COMPARED TO SEASONALLY ADJUSTED PERFORMANCE REFERENCE (SAPR)



# Runway Incursions by FAA Line-of-Business (AVS)

Monthly Data through June 30, 2010

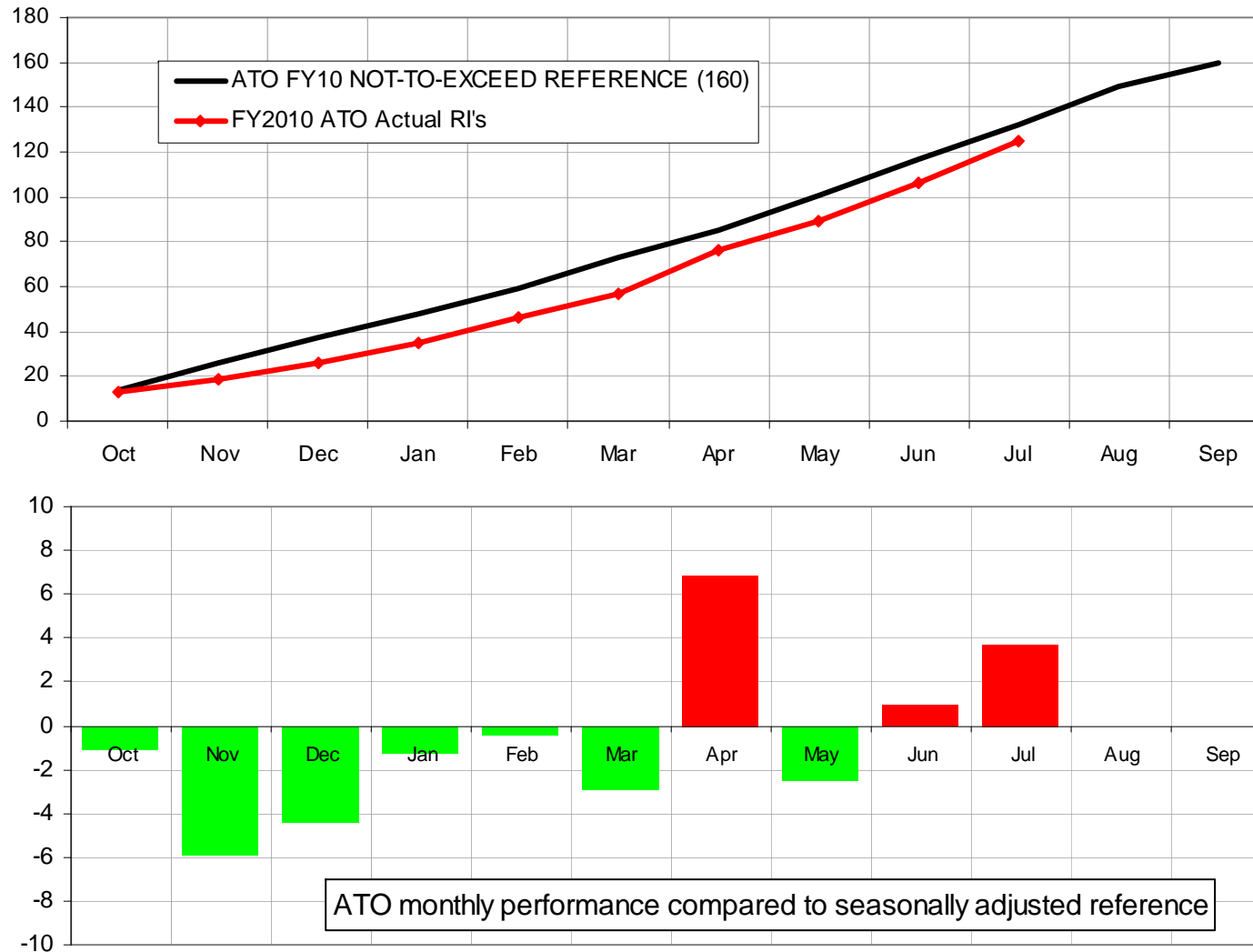
(Based on runway incursions reported as of July 6, 2010)



# Runway Incursions by FAA Line-of-Business (ATO)

Monthly Data through July 31, 2010

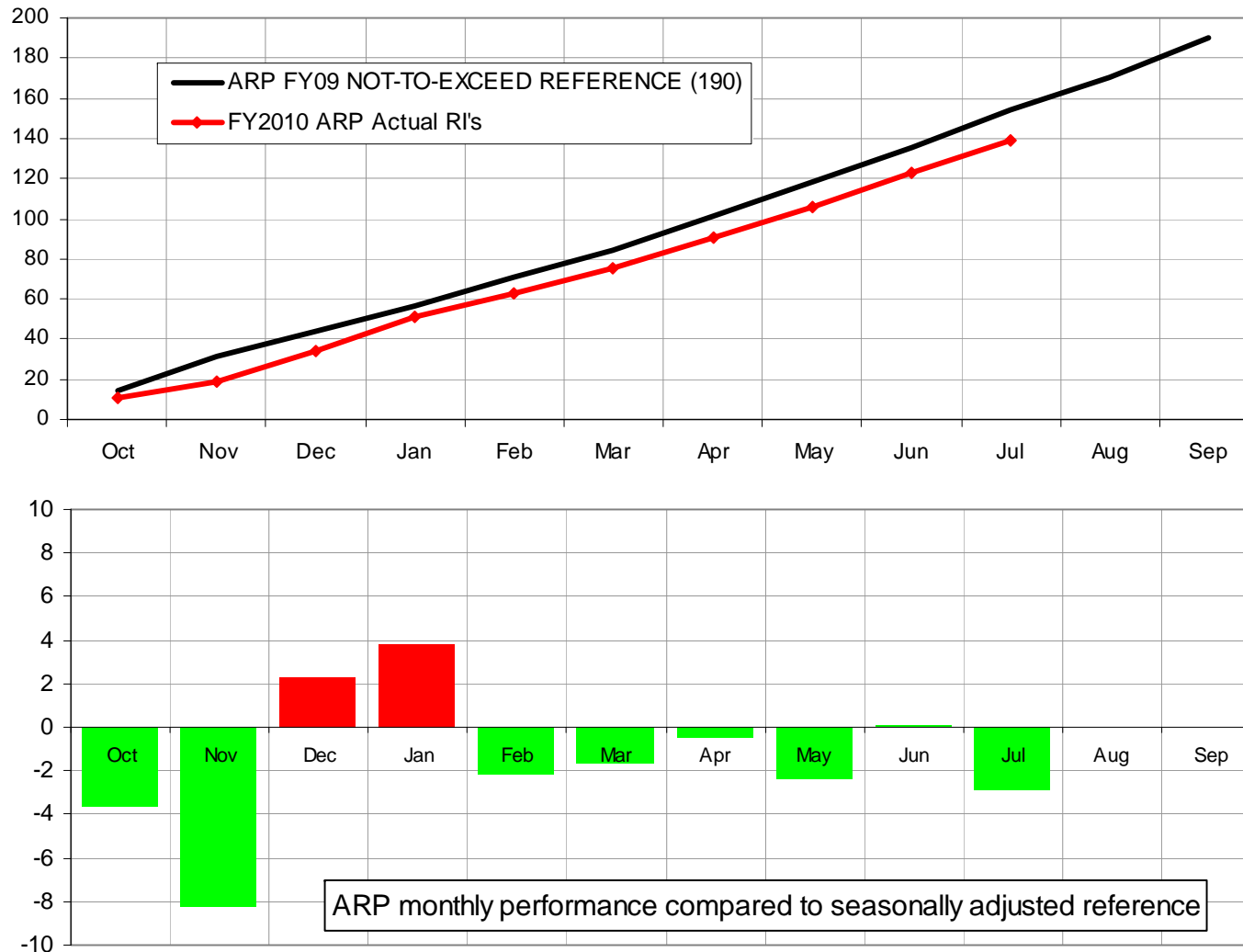
(Based on runway incursions reported as of August 6, 2010)



# Runway Incursions by FAA Line-of-Business (ARP)

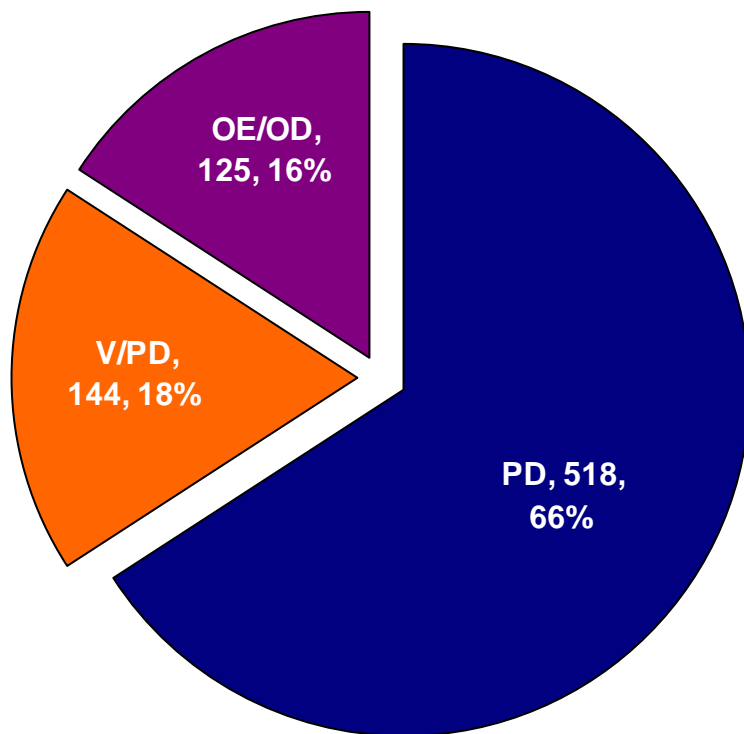
Monthly Data through July 31, 2010

(Based on runway incursions reported as of August 6, 2010)

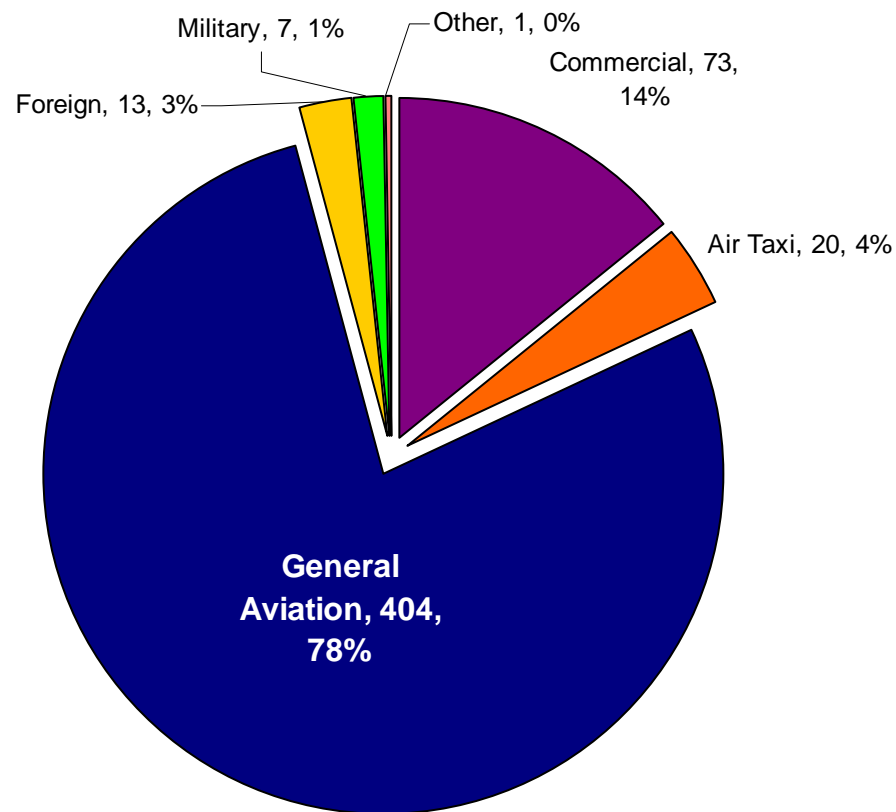




# RUNWAY INCURSIONS: 1 OCT 2009 – 31 JULY 2010



**787 Runway Incursions**

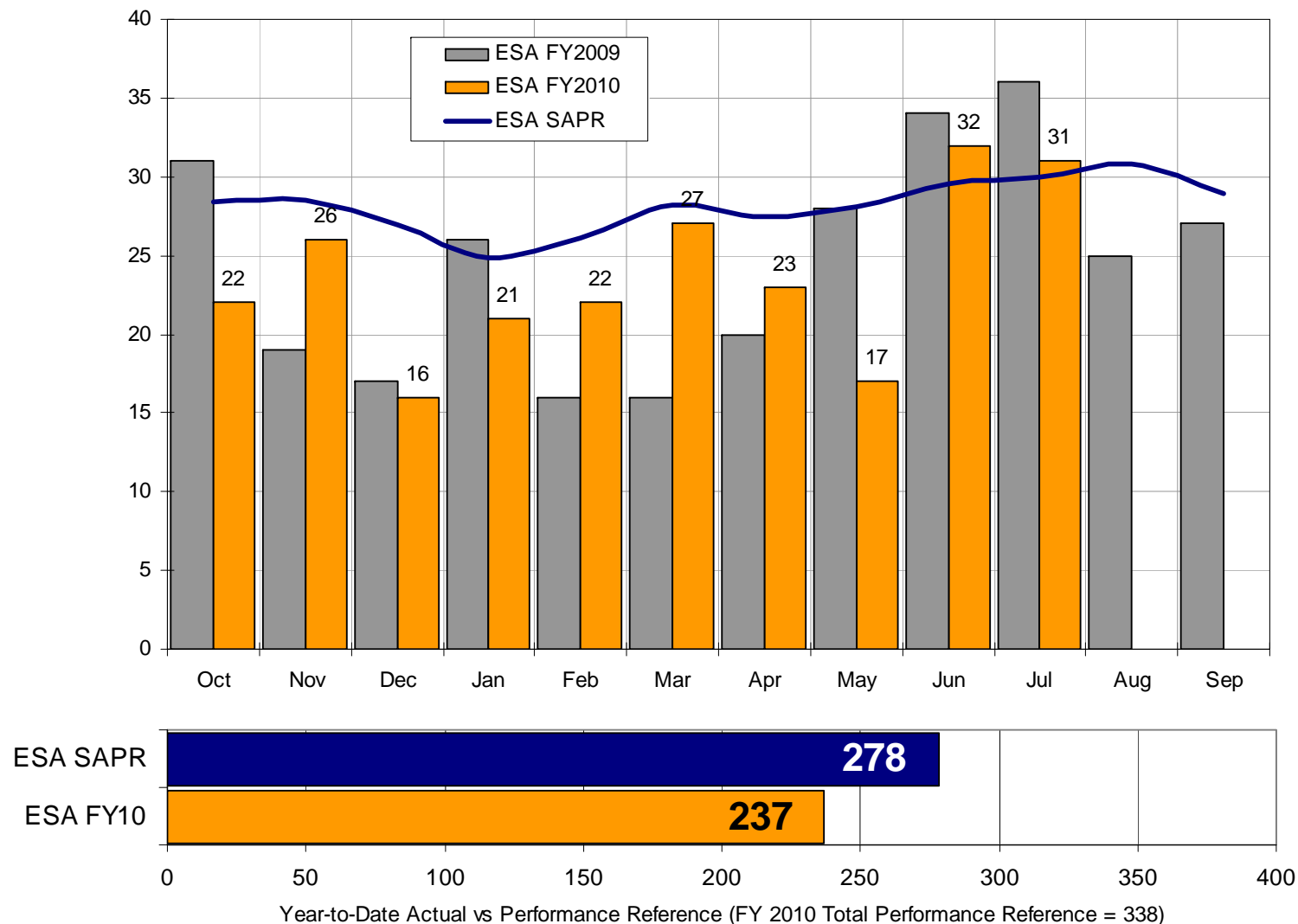


**518 Pilot Deviations**

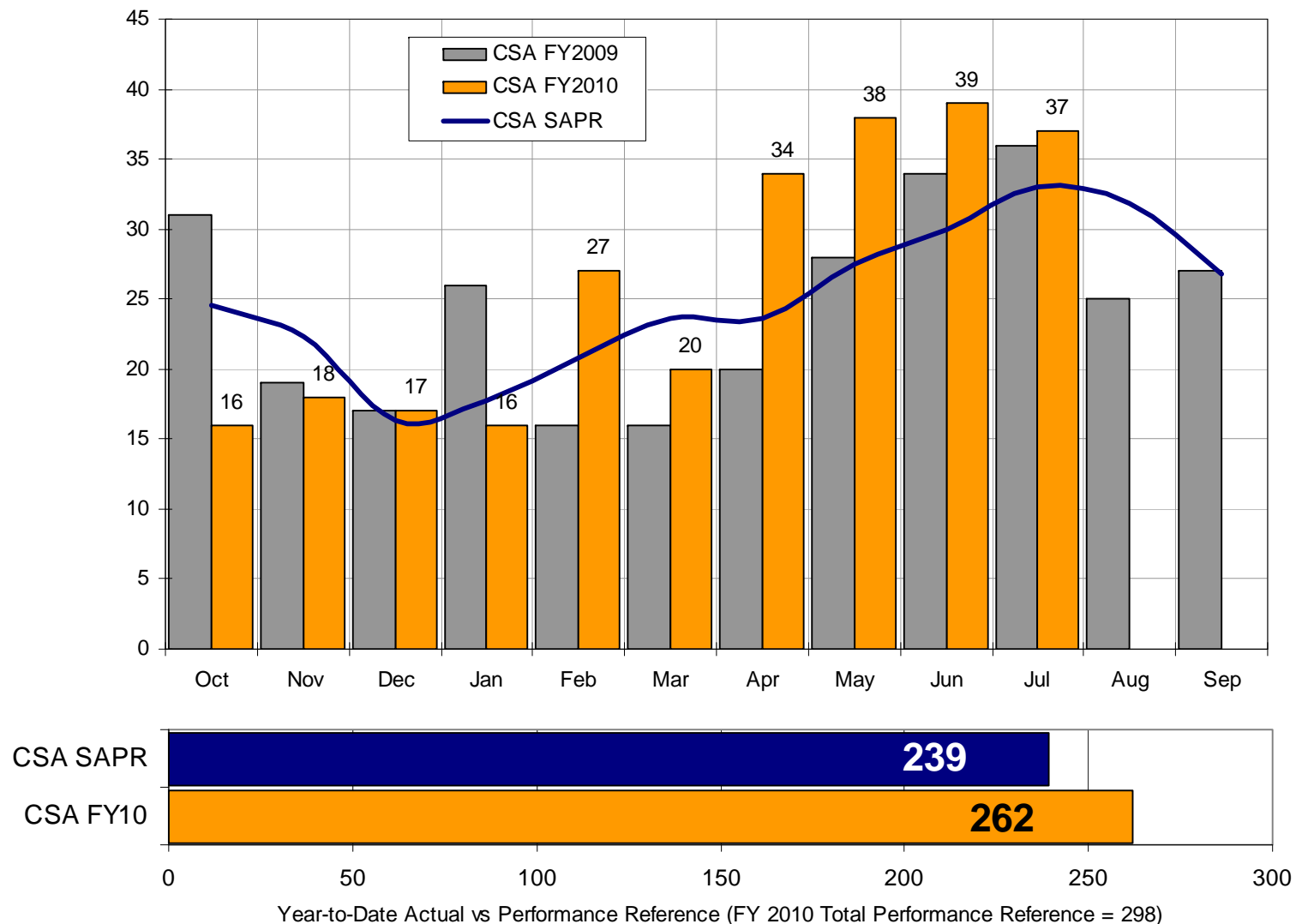
# SERVICE AREA OVERVIEW



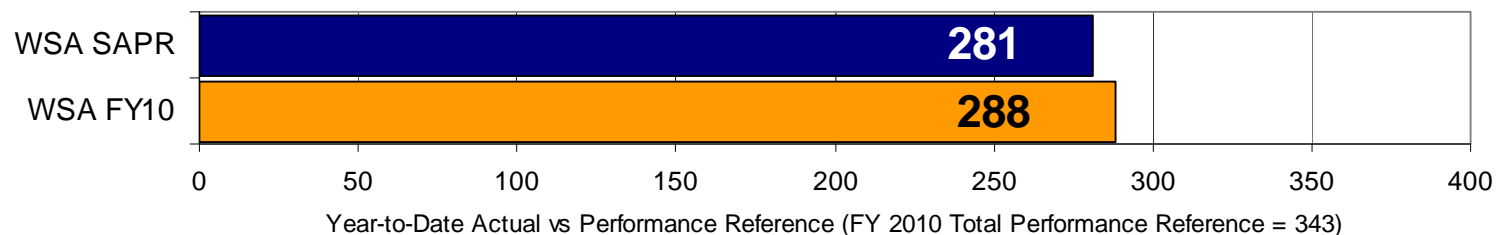
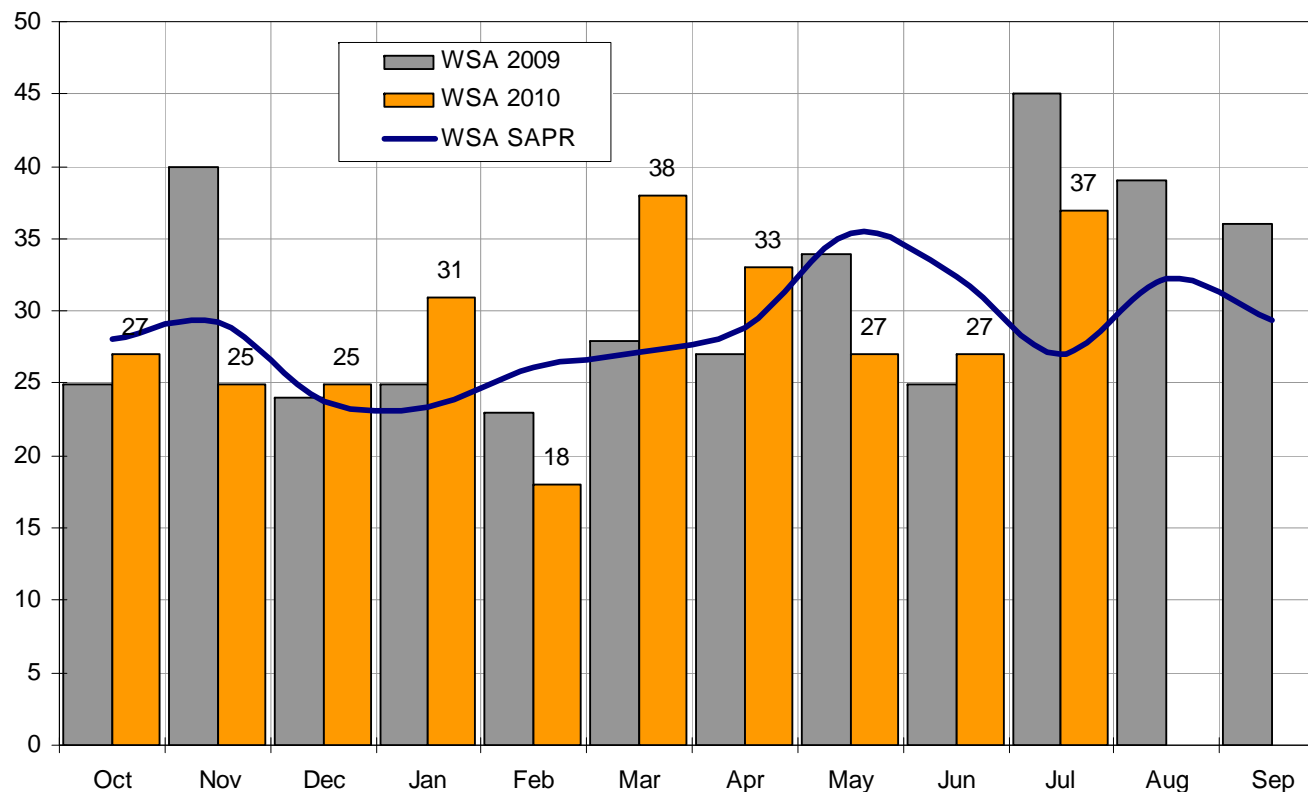
# FY2010 MONTHLY RI COUNT COMPARED TO SEASONALLY ADJUSTED REFERENCE: EASTERN SERVICE AREA



# FY2010 MONTHLY RI COUNT COMPARED TO SEASONALLY ADJUSTED REFERENCE: CENTRAL SERVICE AREA



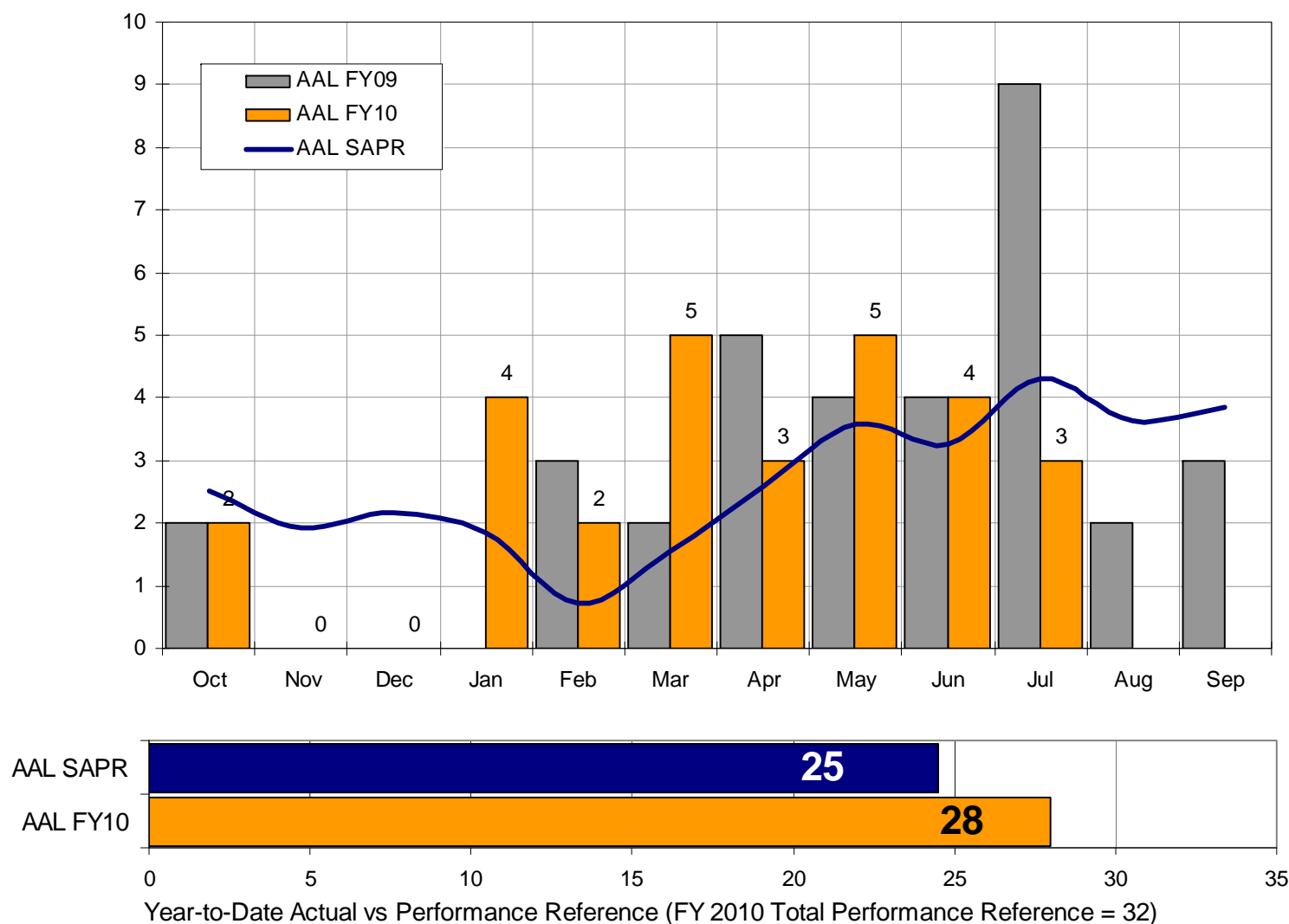
# FY2010 MONTHLY RI COUNT COMPARED TO SEASONALLY ADJUSTED REFERENCE: WESTERN SERVICE AREA



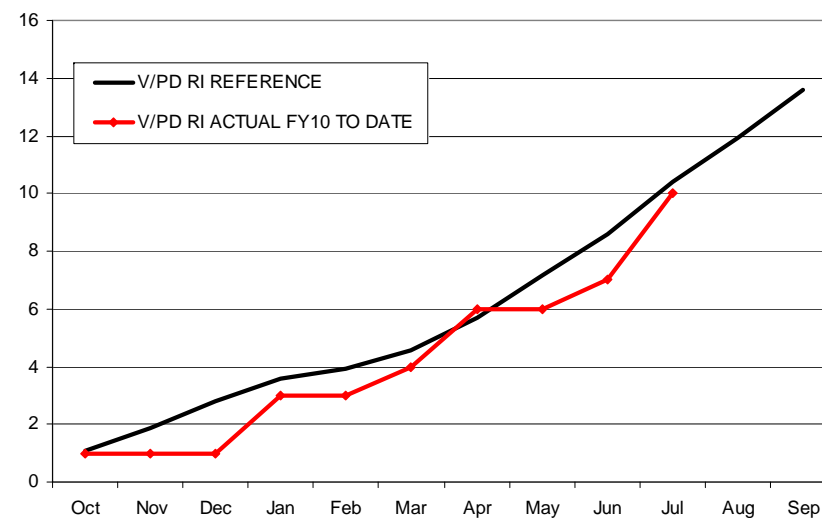
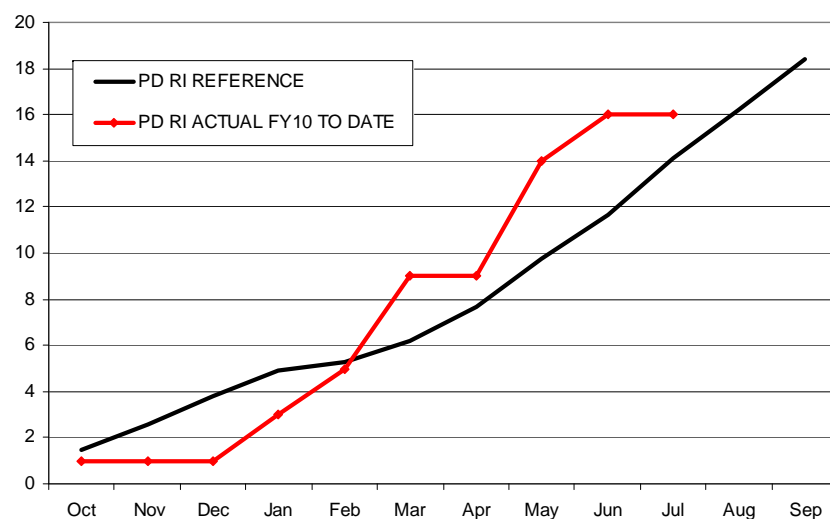
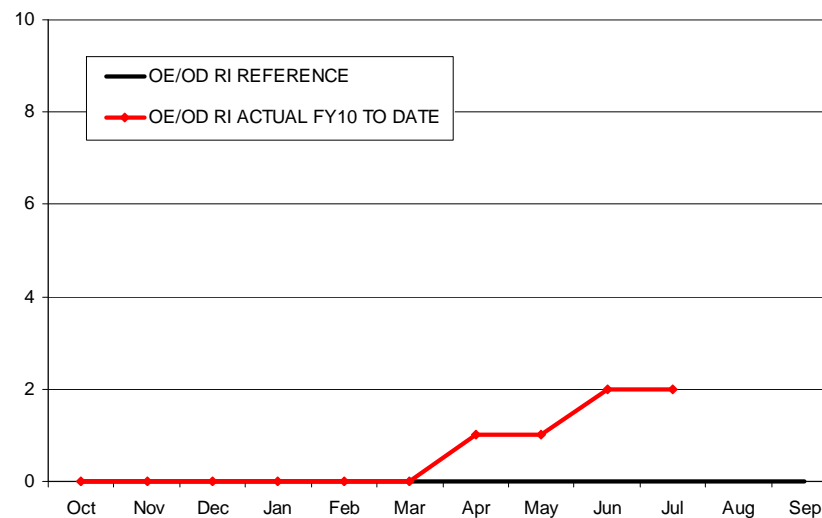
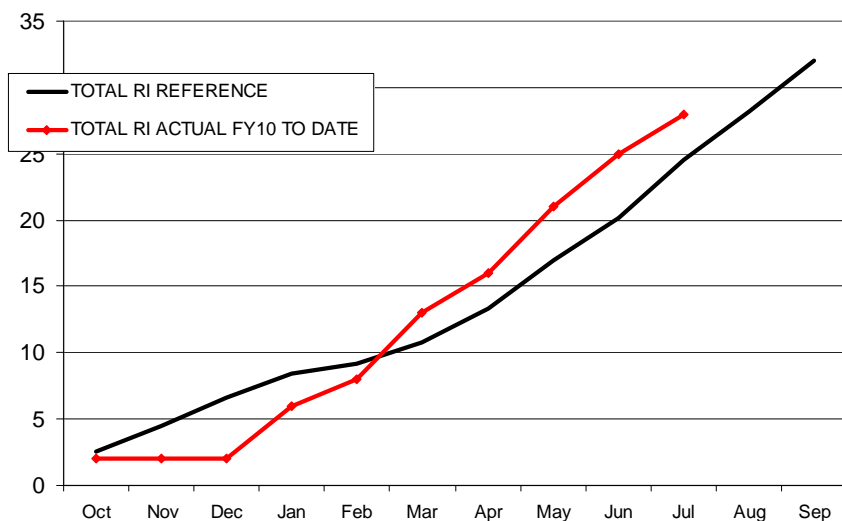
# REGIONAL OVERVIEW



# FY2010 MONTHLY RI COUNT COMPARED TO SEASONALLY ADJUSTED PERFORMANCE REFERENCE (SAPR): AAL

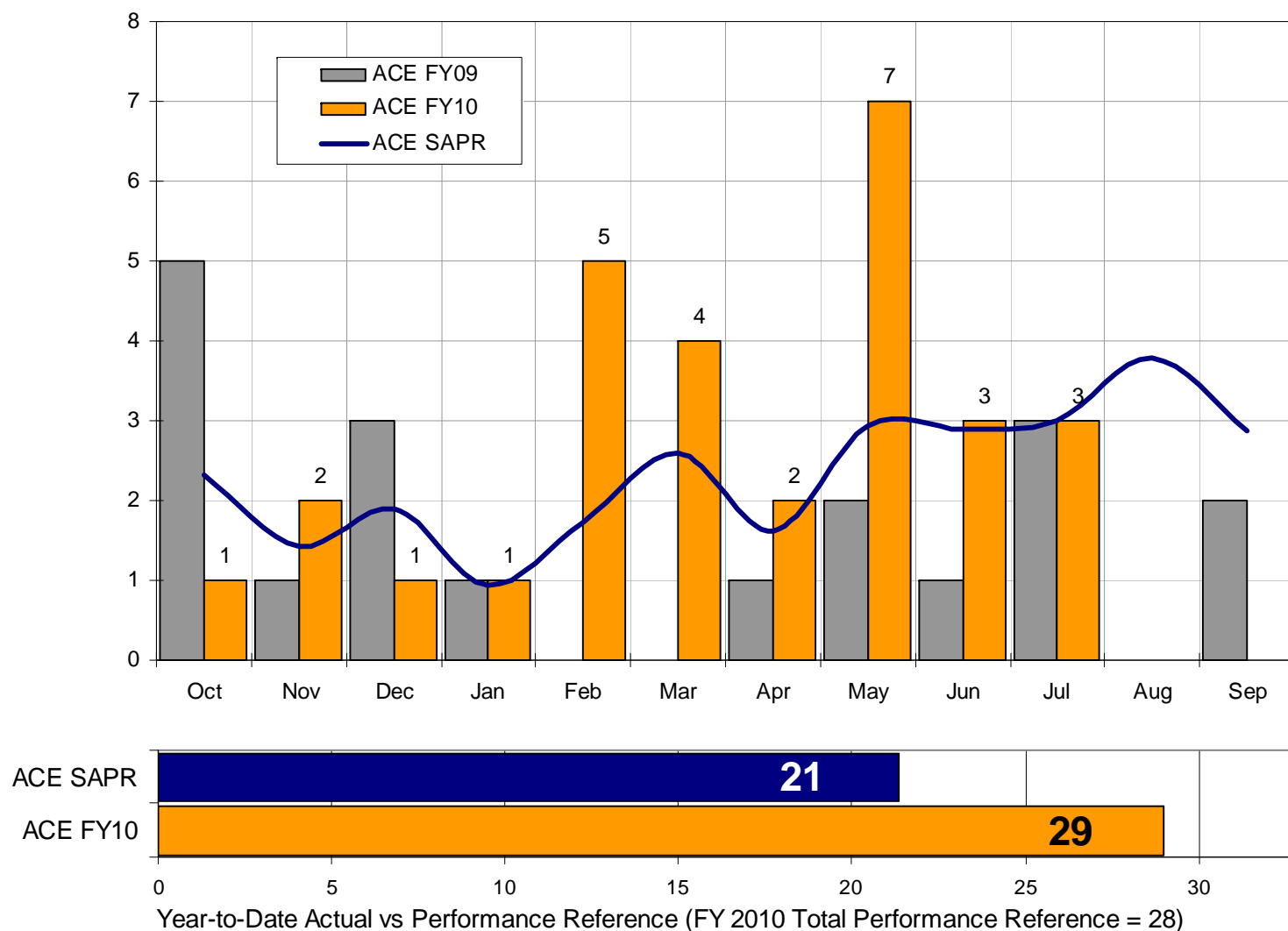


# FY2010 MONTHLY RI COUNT (BY TYPE) COMPARED TO SAPR: AAL

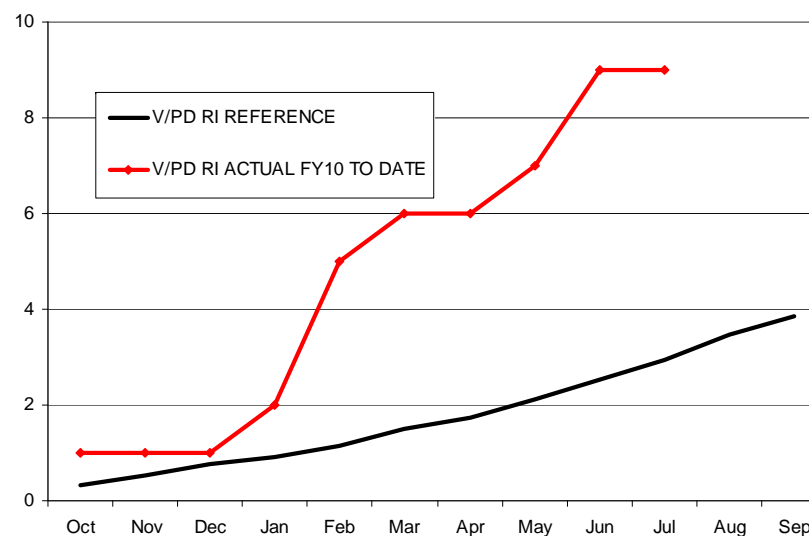
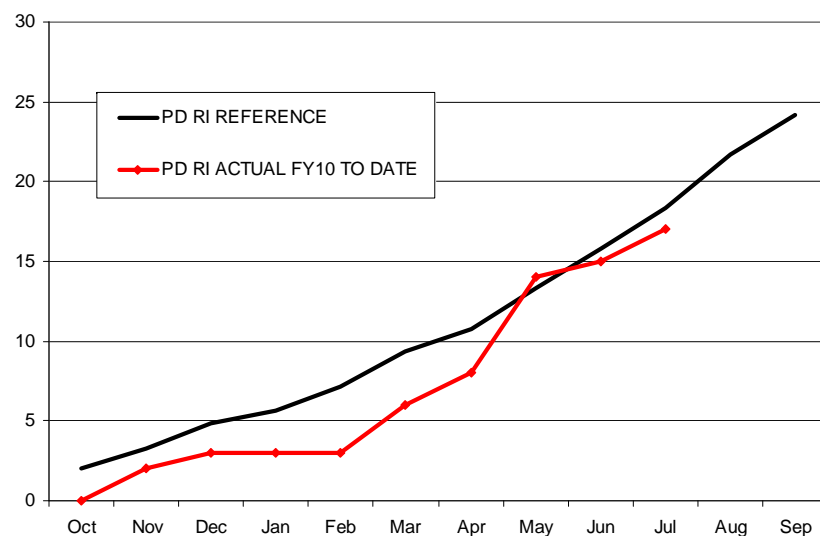
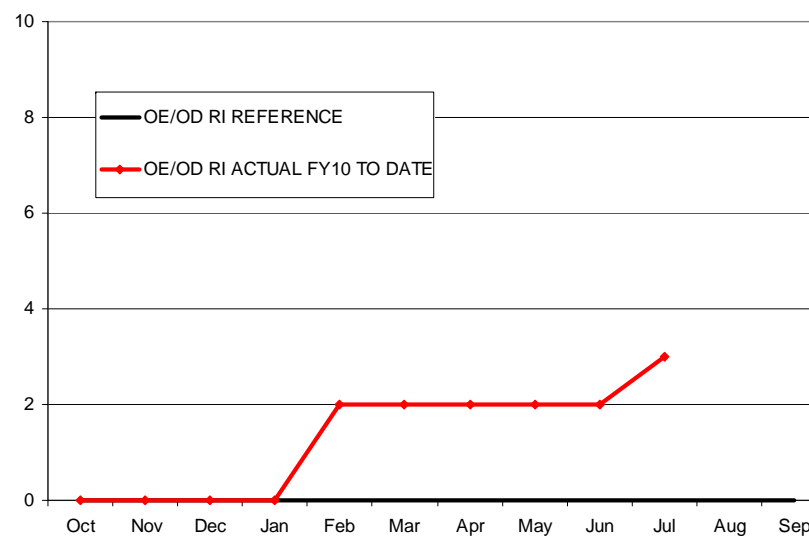
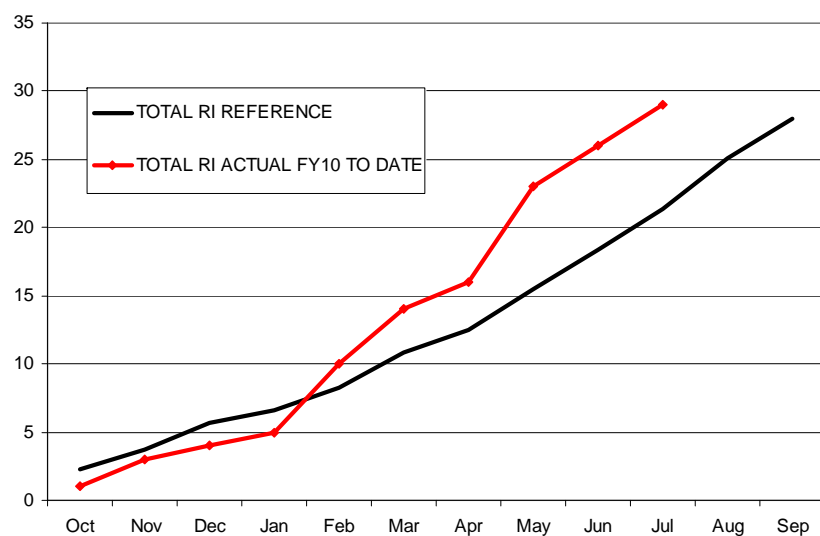




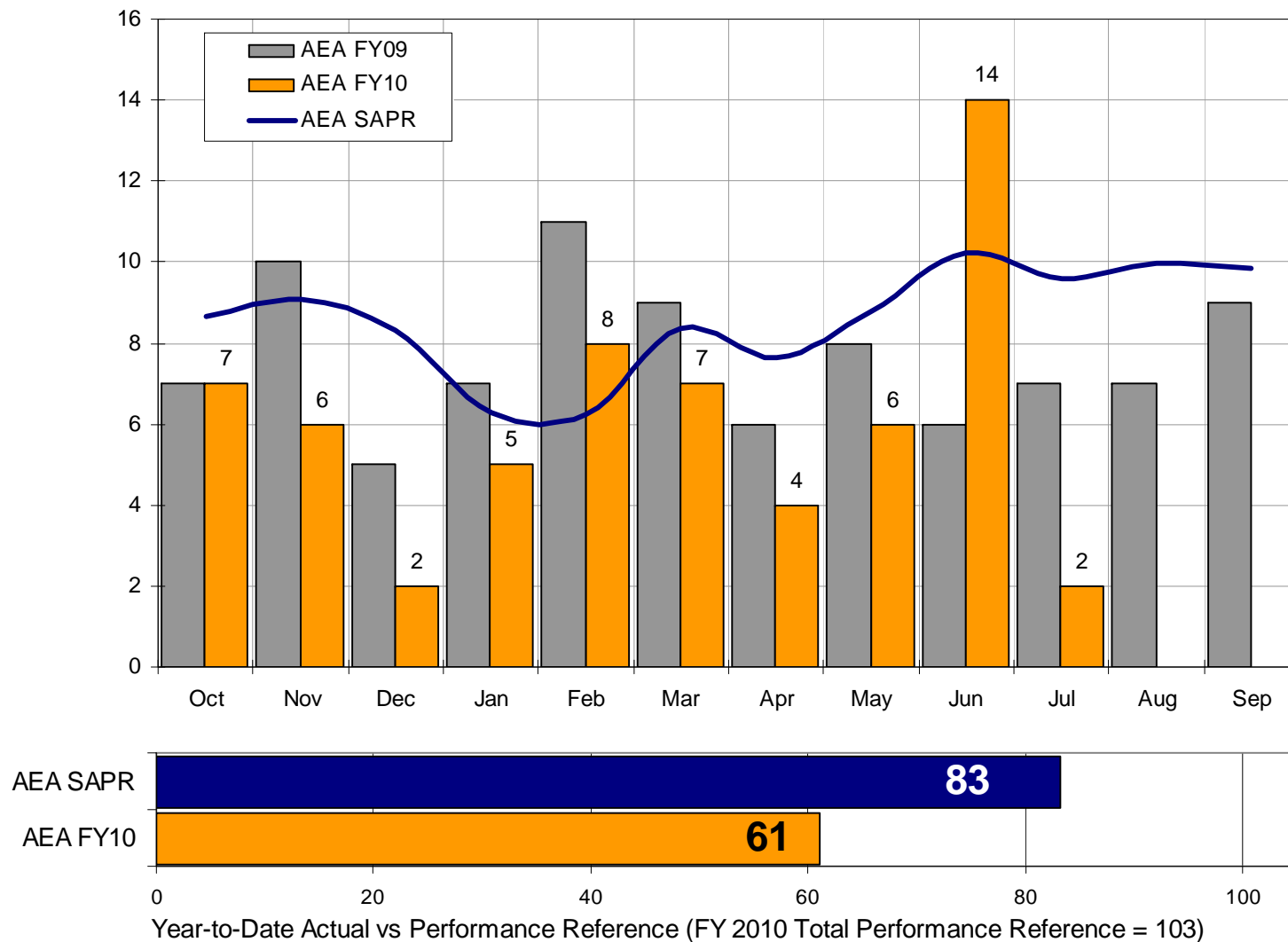
# FY2010 MONTHLY RI COUNT COMPARED TO SEASONALLY ADJUSTED PERFORMANCE REFERENCE (SAPR): ACE



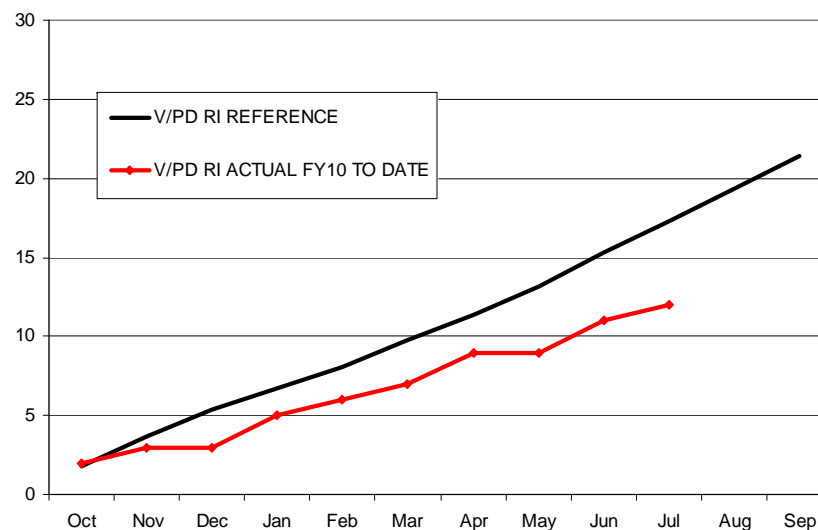
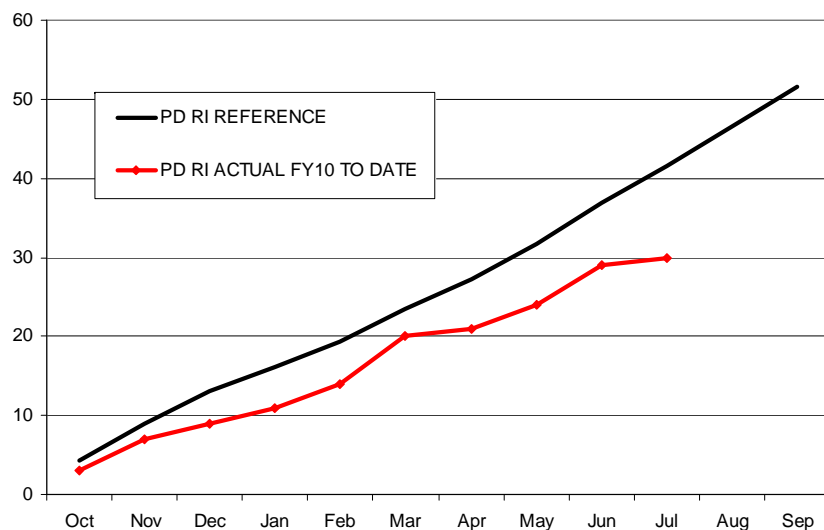
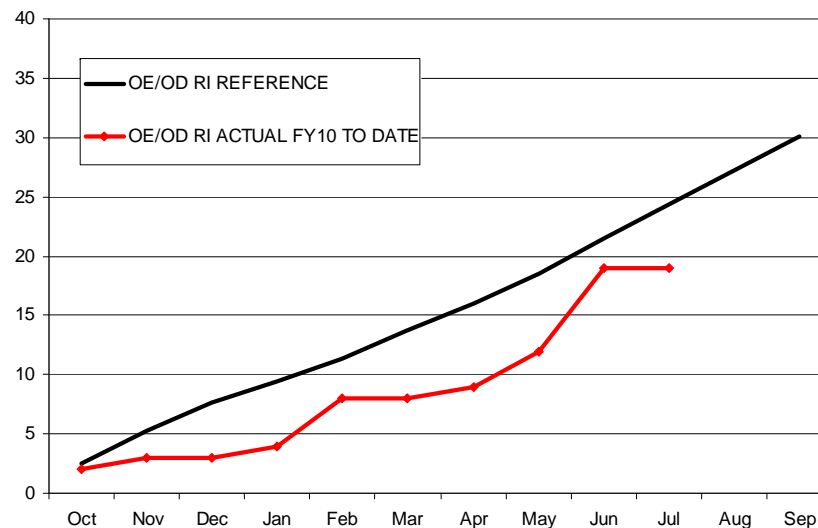
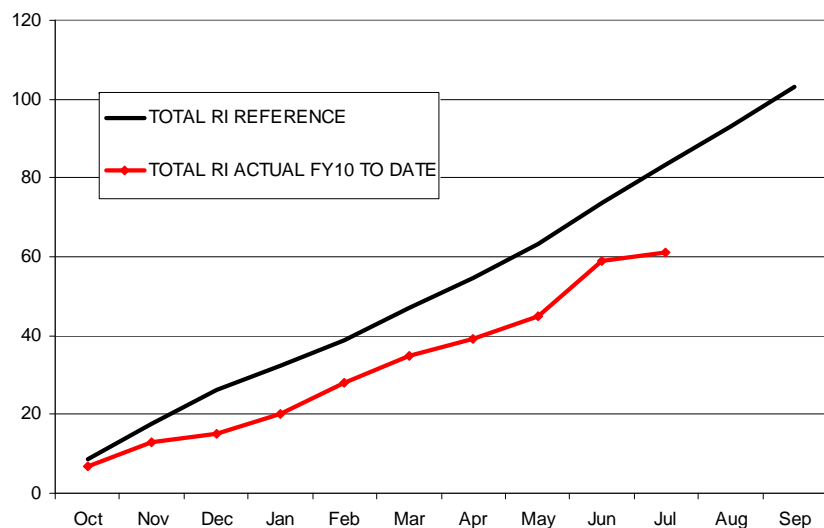
# FY2010 MONTHLY RI COUNT (BY TYPE) COMPARED TO SAPR: ACE



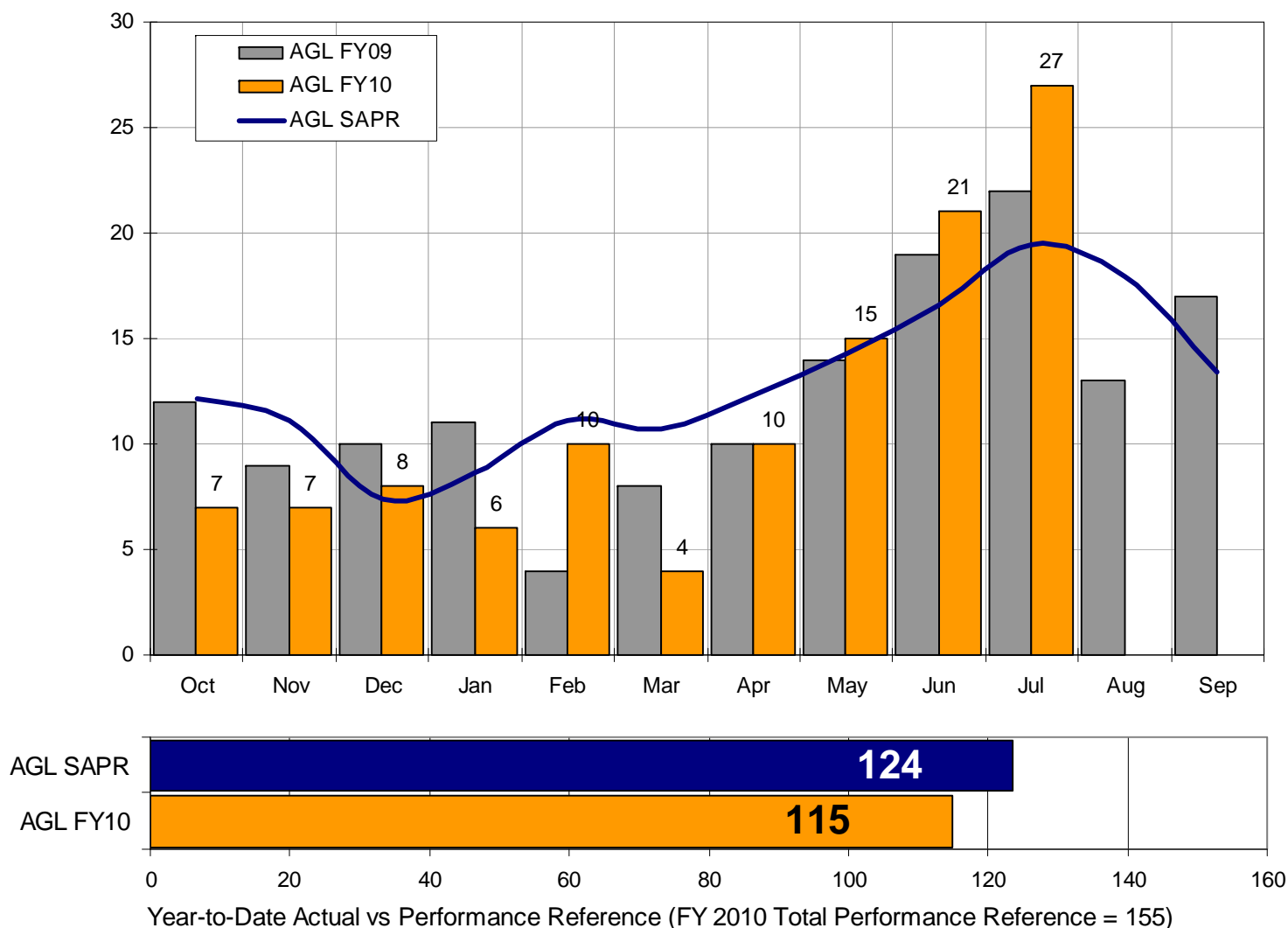
# FY2010 MONTHLY RI COUNT COMPARED TO SEASONALLY ADJUSTED PERFORMANCE REFERENCE (SAPR): AEA



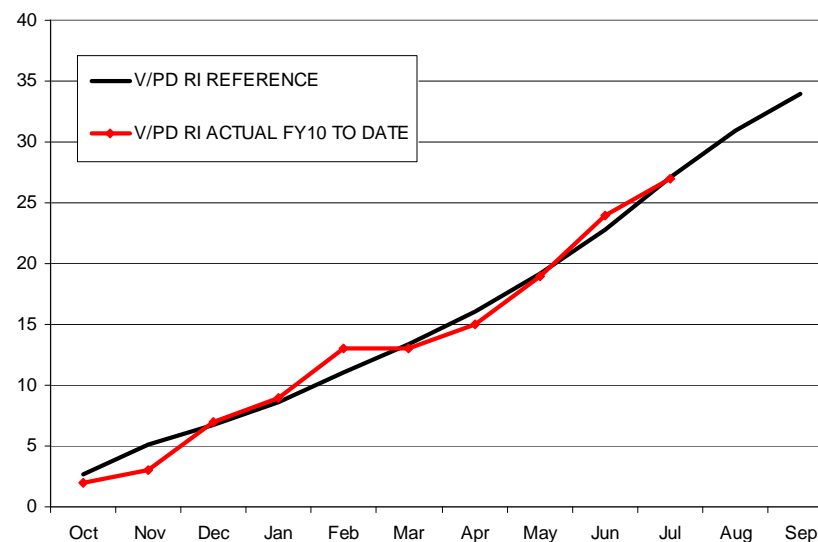
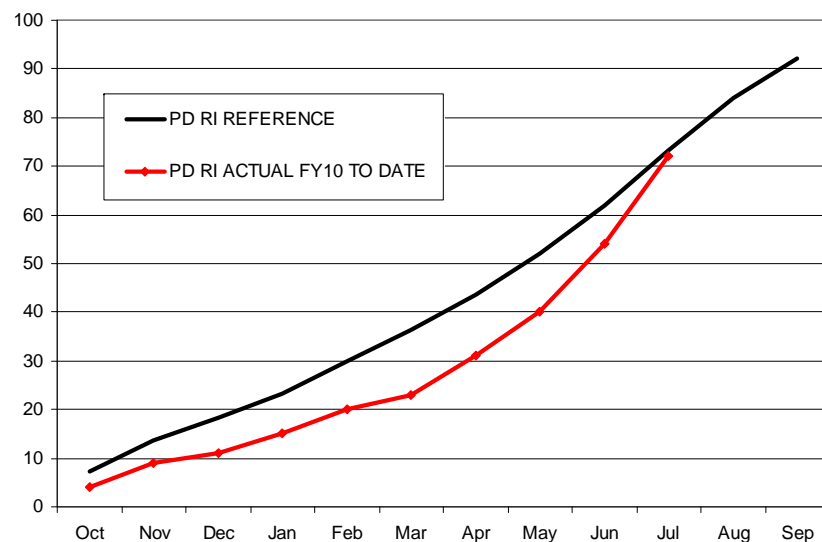
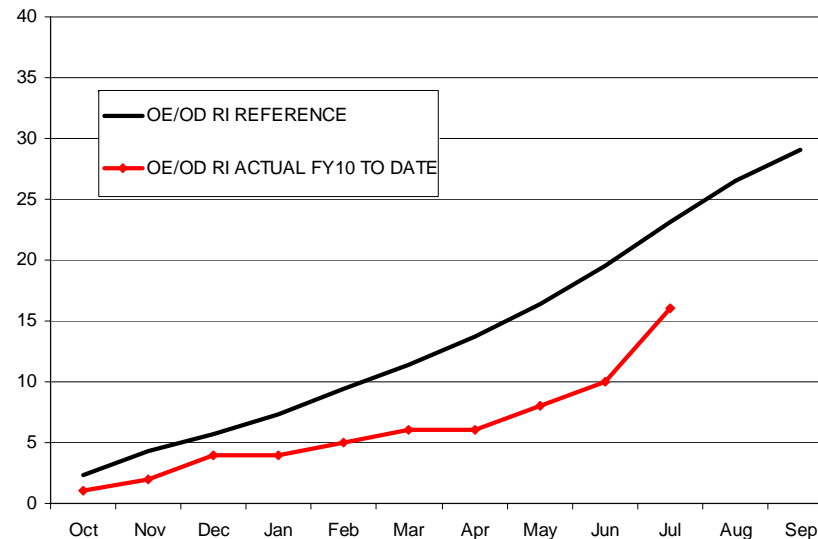
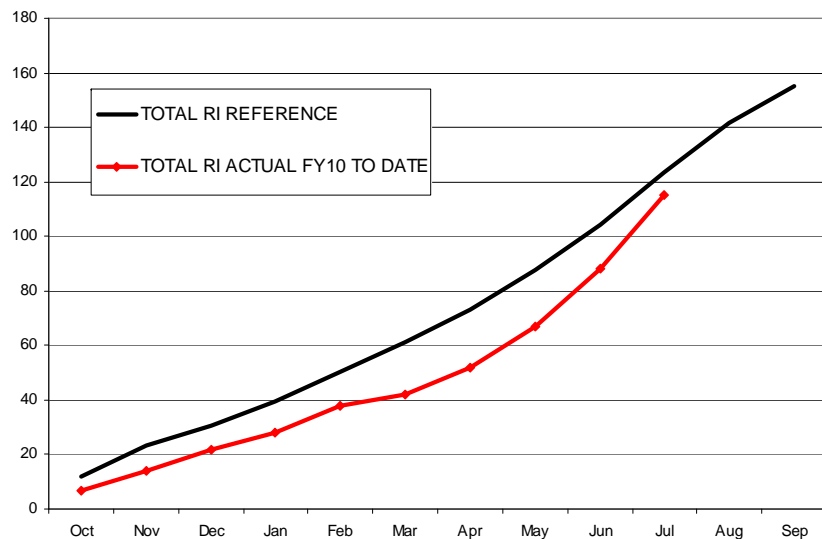
# FY2010 MONTHLY RI COUNT (BY TYPE) COMPARED TO SAPR: AEA



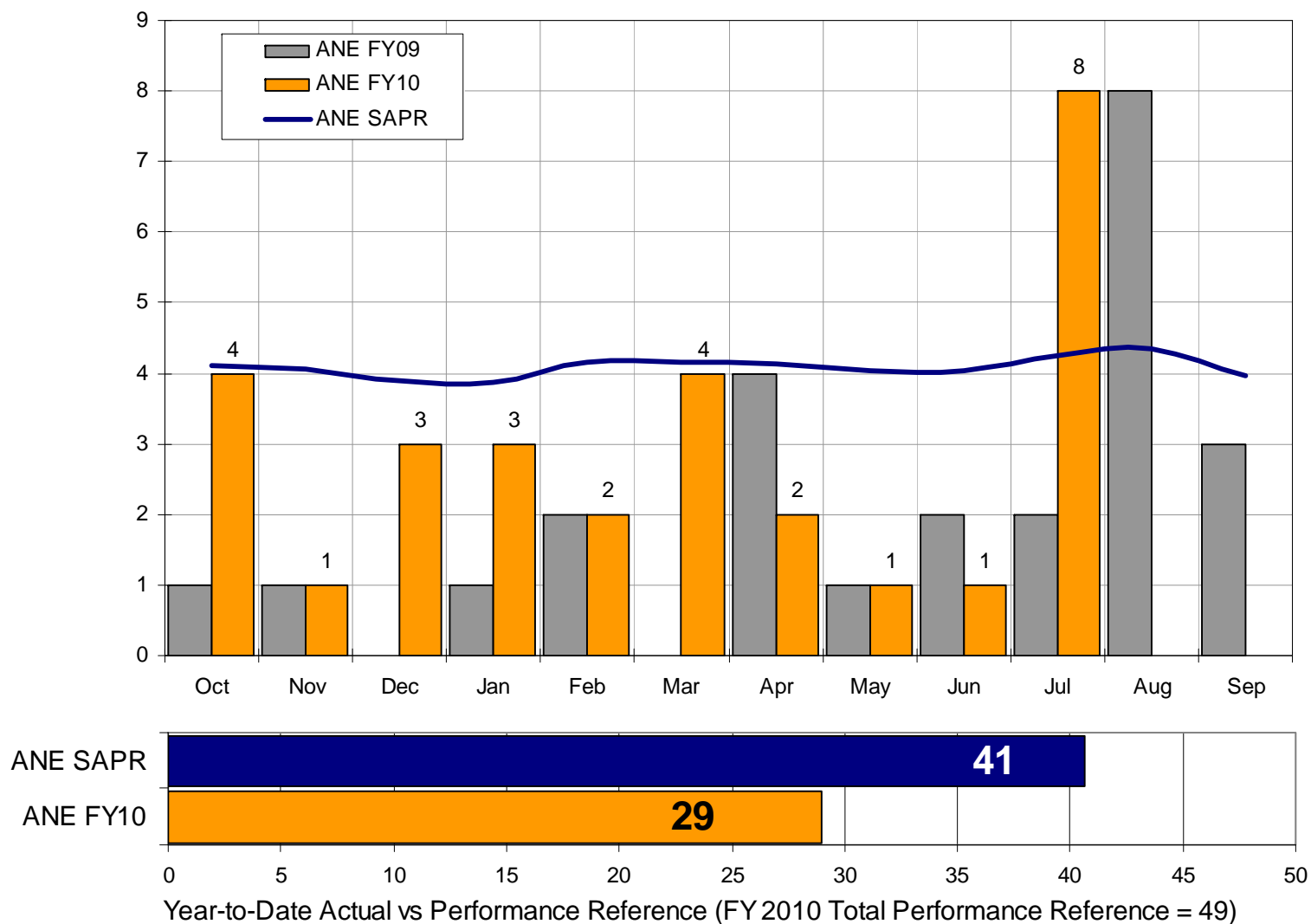
# FY2010 MONTHLY RI COUNT COMPARED TO SEASONALLY ADJUSTED PERFORMANCE REFERENCE (SAPR): AGL



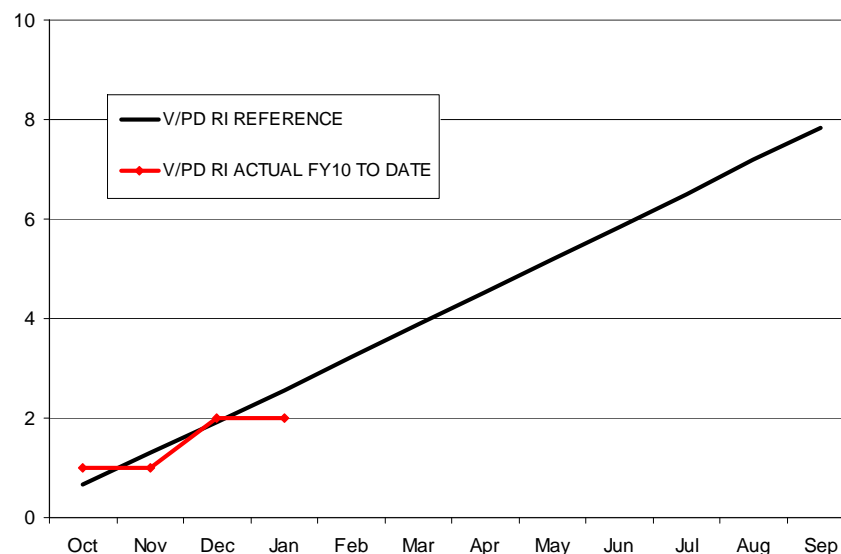
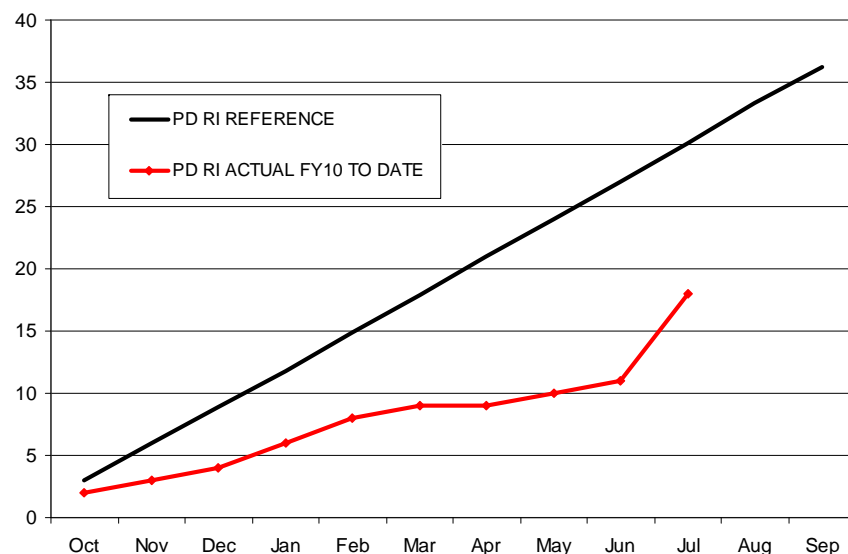
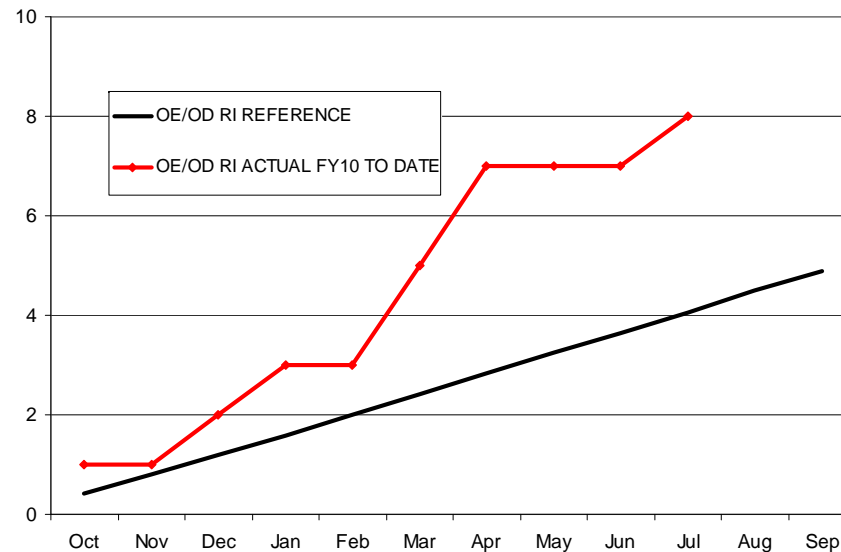
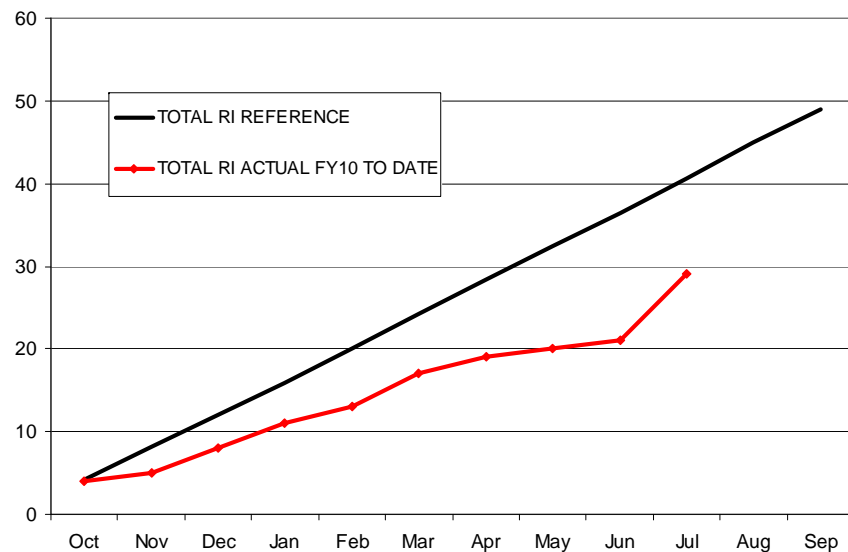
# FY2010 MONTHLY RI COUNT (BY TYPE) COMPARED TO SAPR: AGL



# FY2010 MONTHLY RI COUNT COMPARED TO SEASONALLY ADJUSTED PERFORMANCE REFERENCE (SAPR): ANE

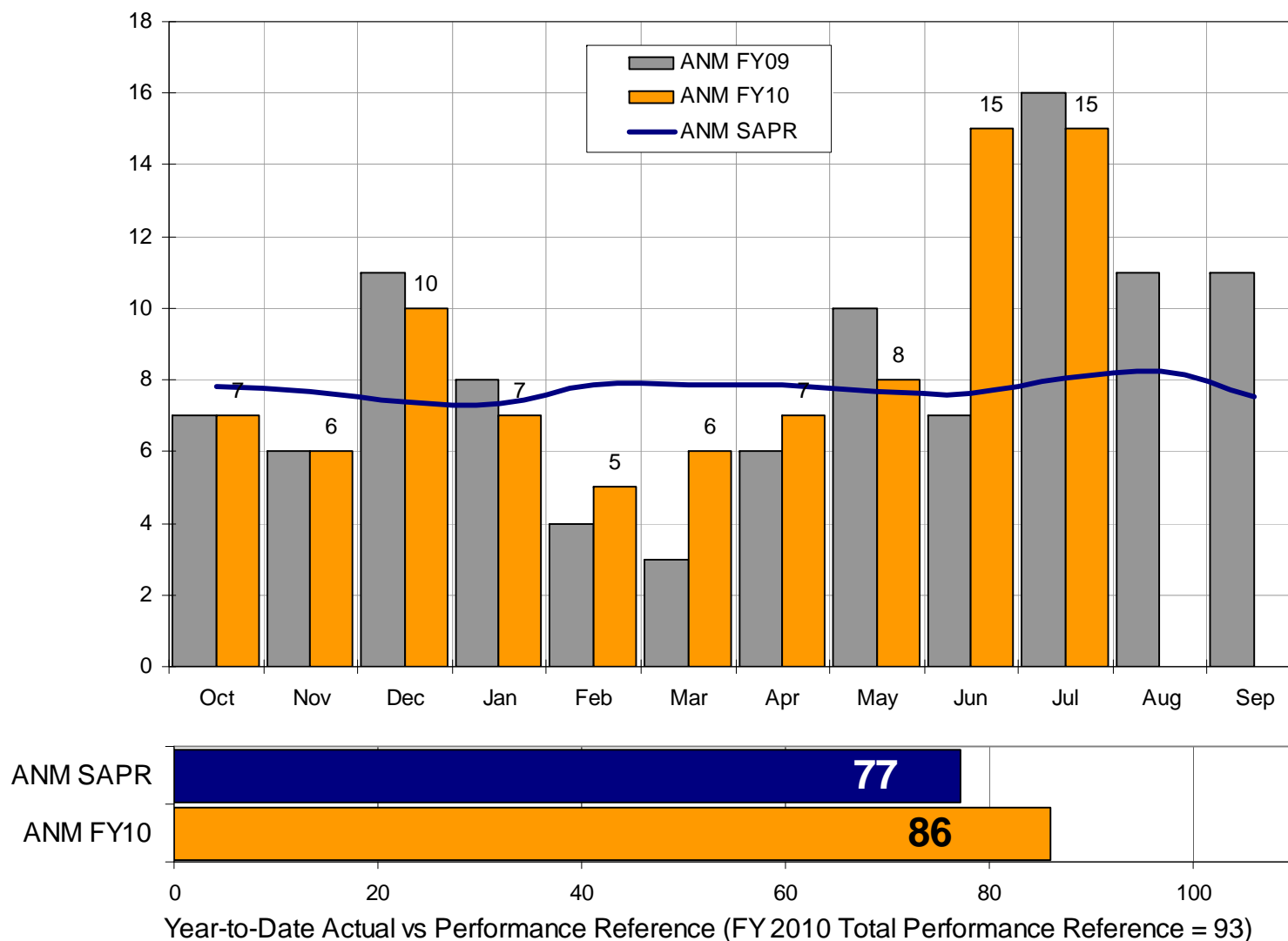


# FY2010 MONTHLY RI COUNT (BY TYPE) COMPARED TO SAPR: ANE

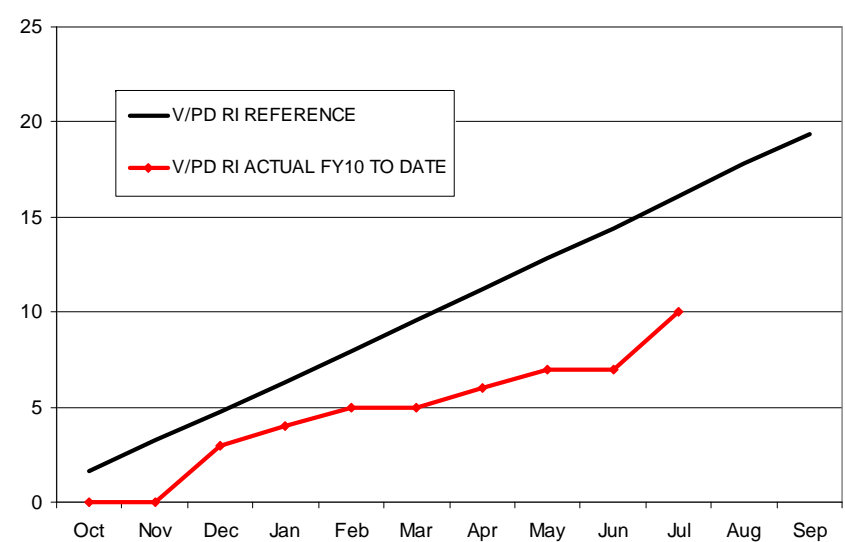
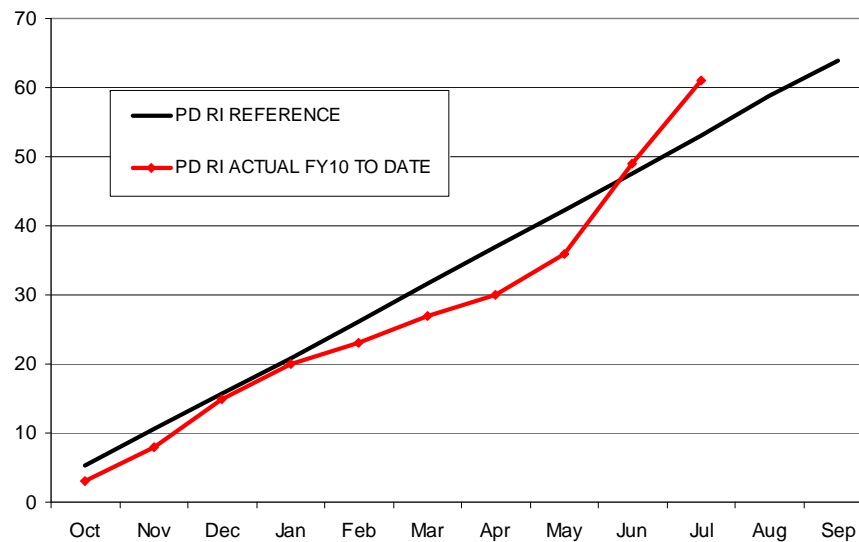
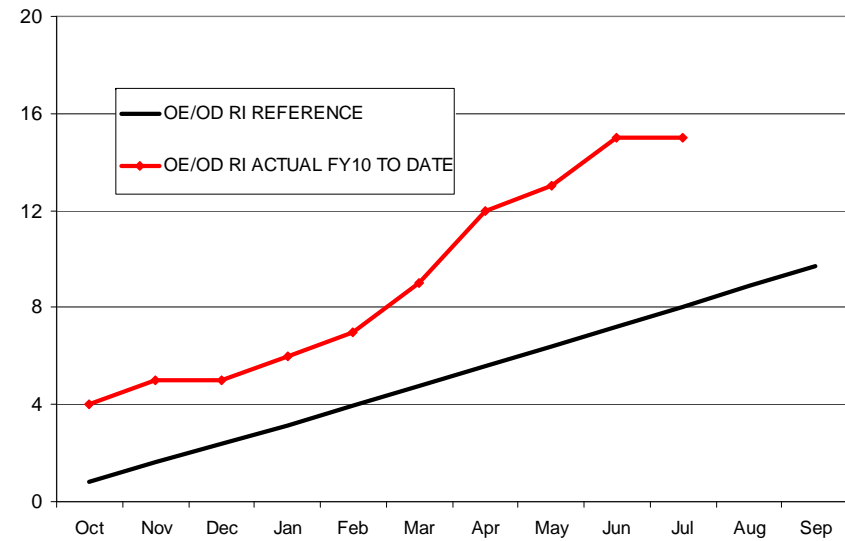
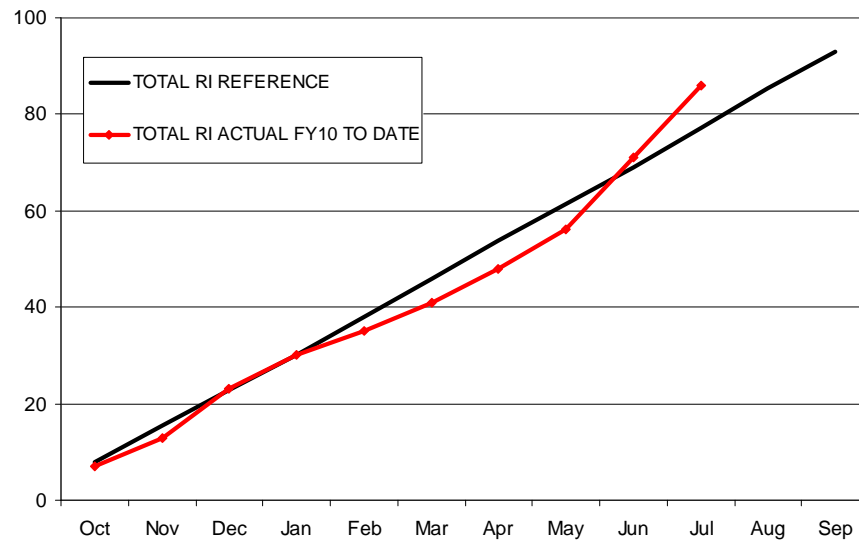




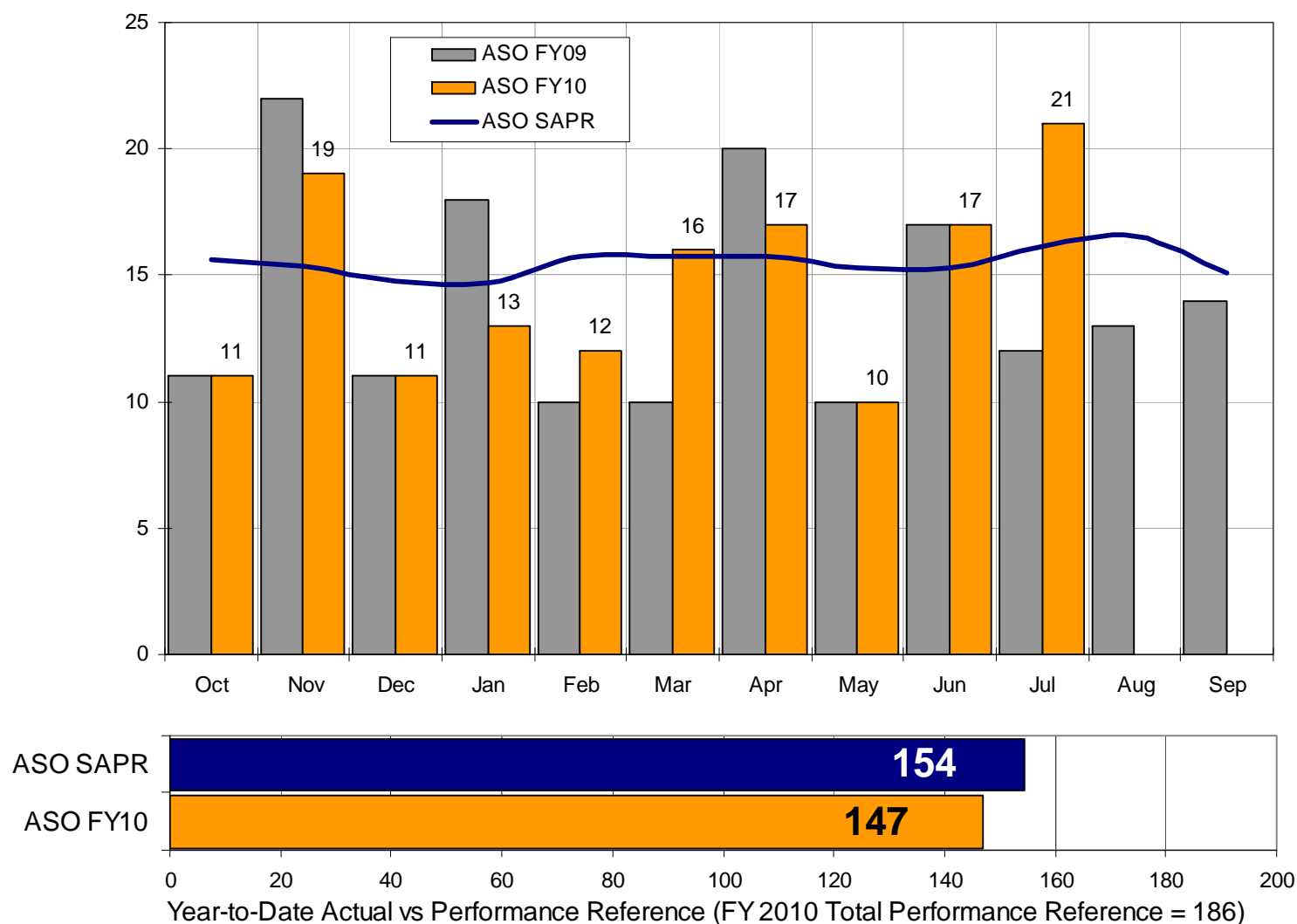
# FY2010 MONTHLY RI COUNT COMPARED TO SEASONALLY ADJUSTED PERFORMANCE REFERENCE (SAPR): ANM



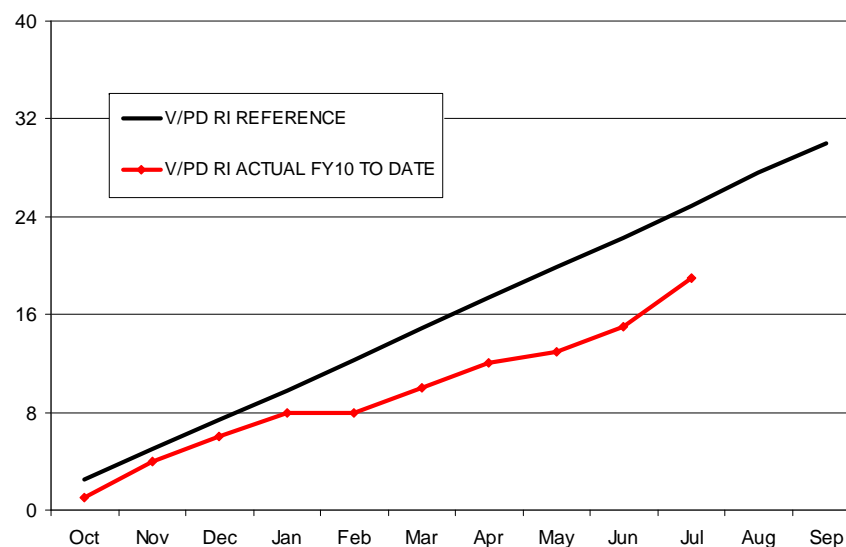
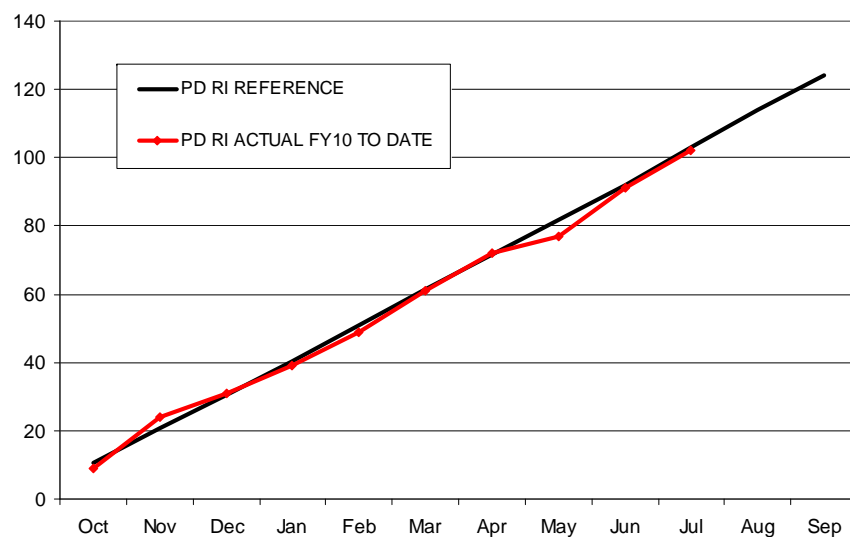
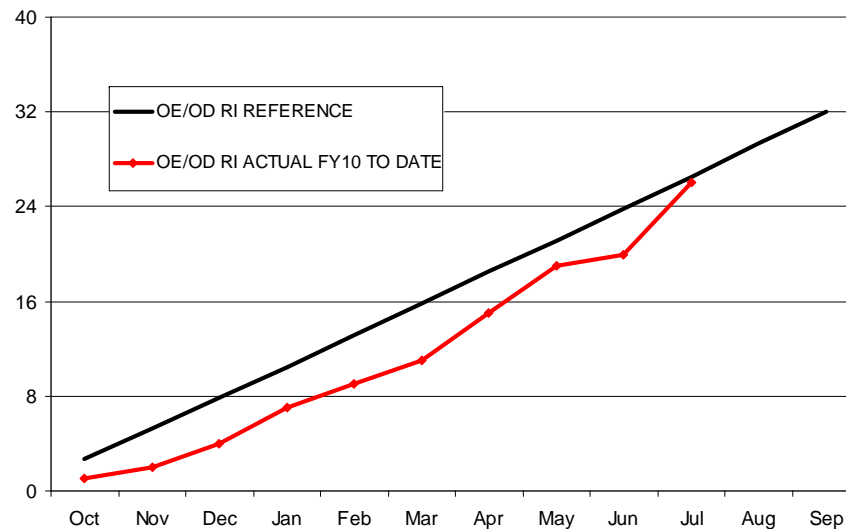
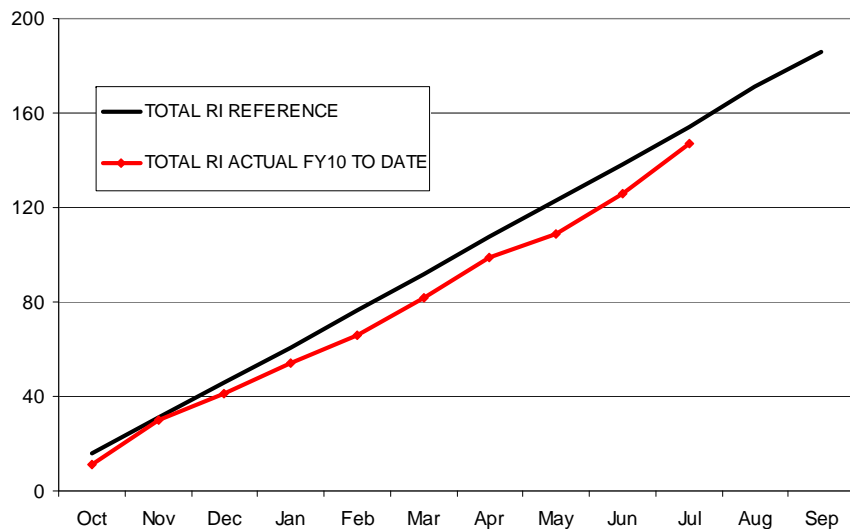
# FY2010 MONTHLY RI COUNT (BY TYPE) COMPARED TO SAPR: ANM



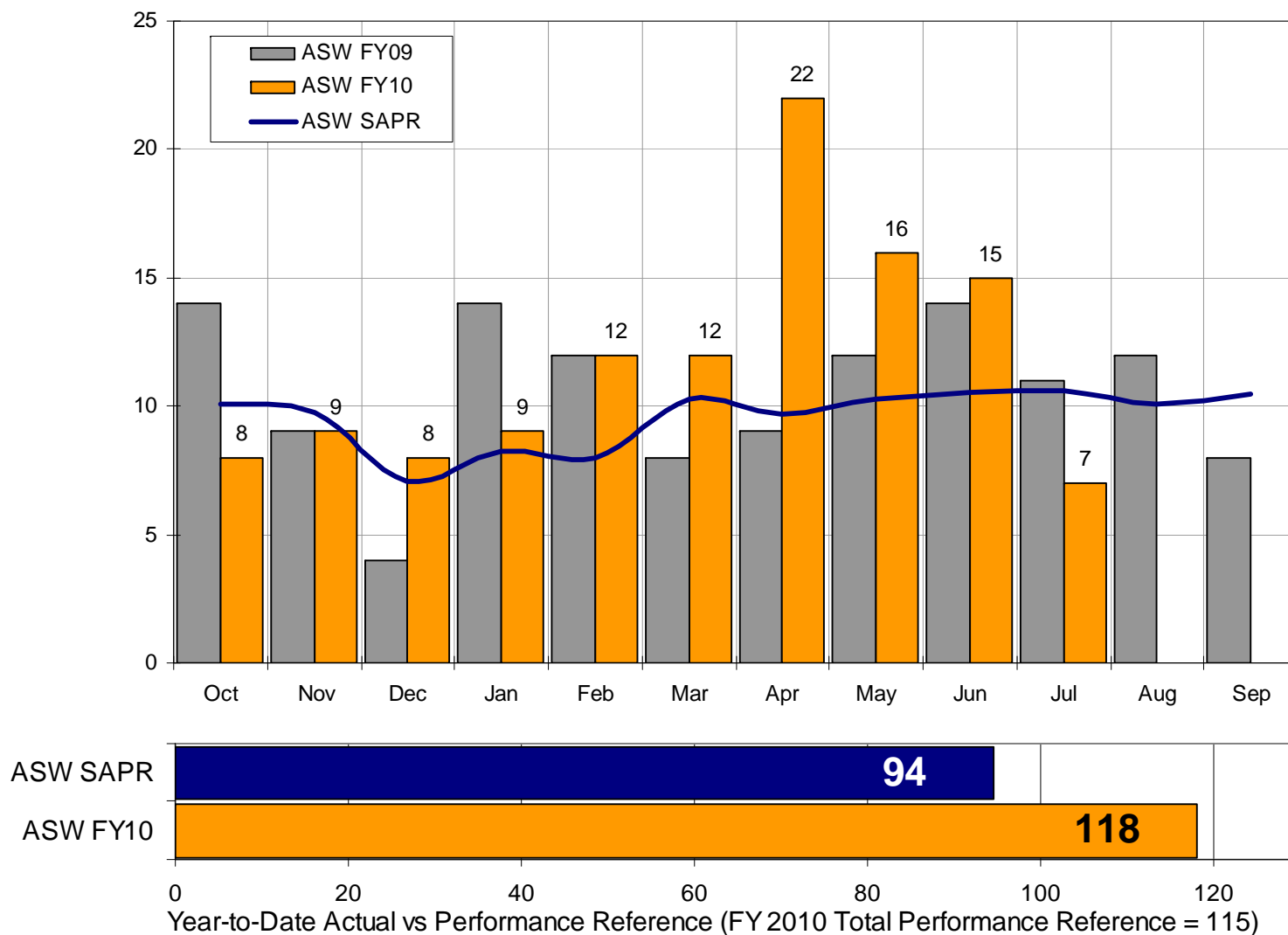
# FY2010 MONTHLY RI COUNT COMPARED TO SEASONALLY ADJUSTED PERFORMANCE REFERENCE (SAPR): ASO



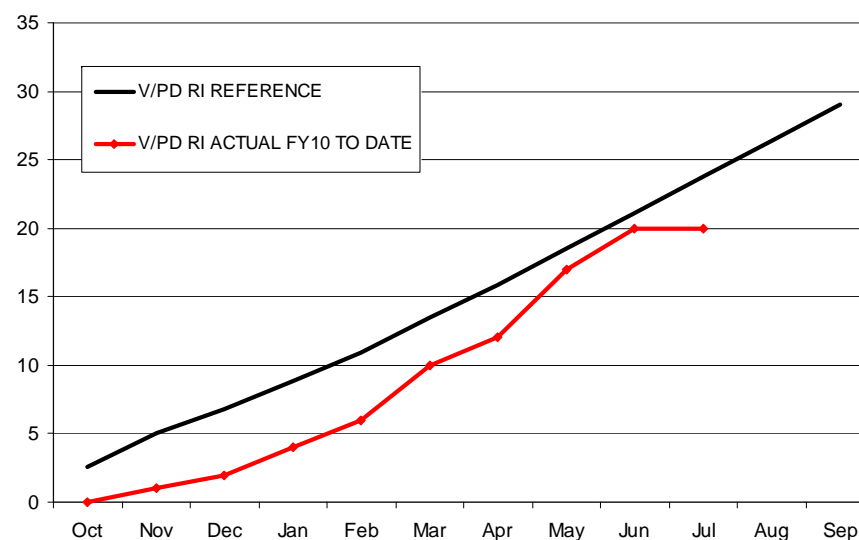
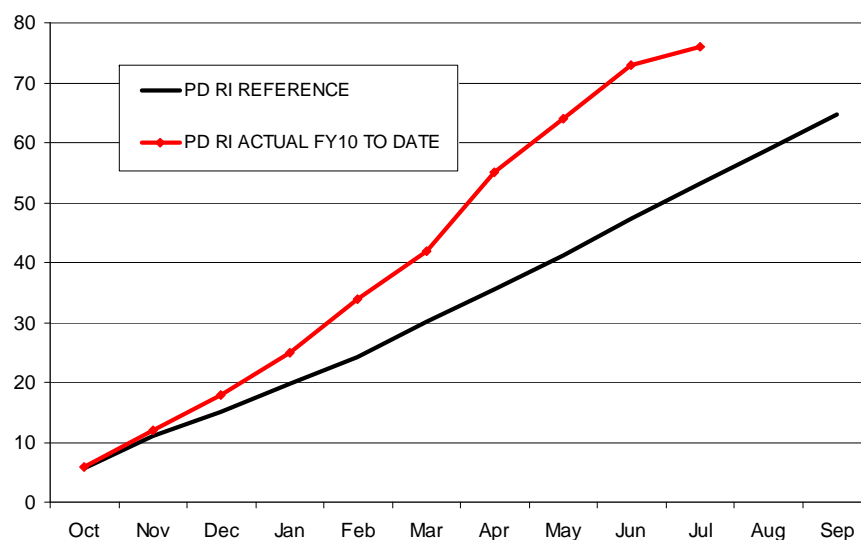
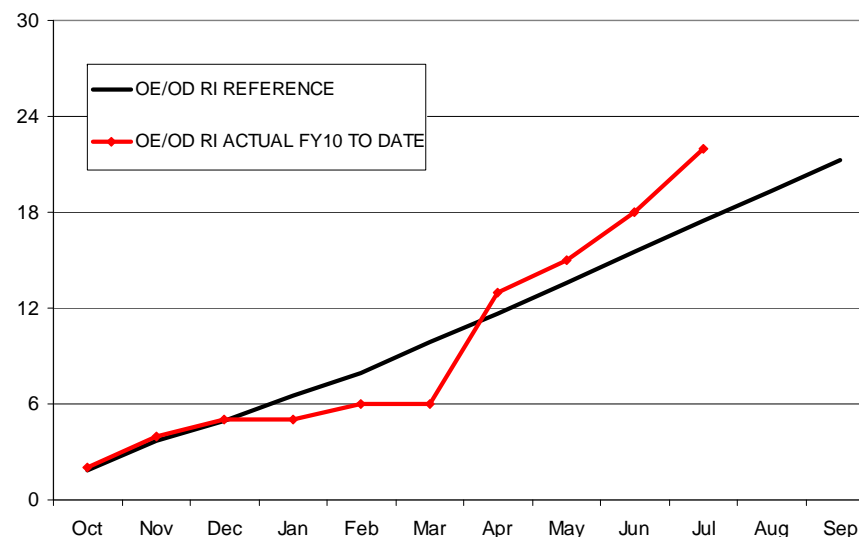
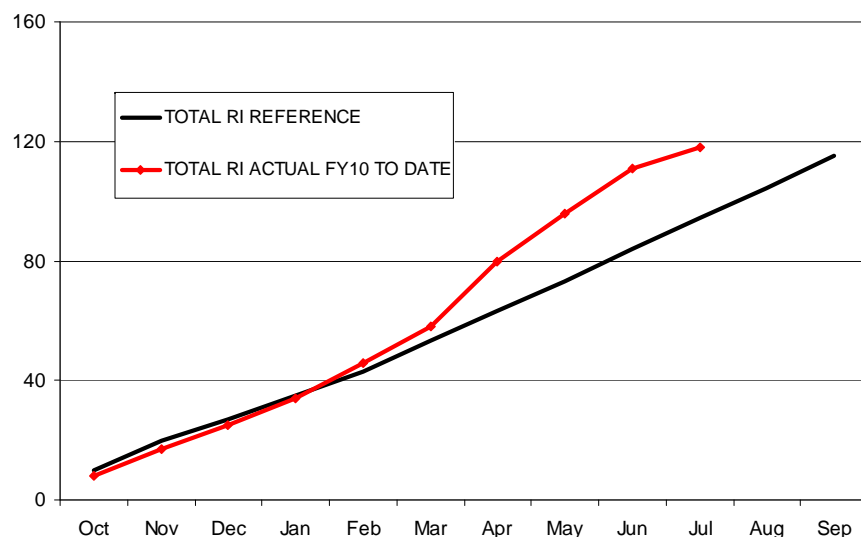
# FY2010 MONTHLY RI COUNT (BY TYPE) COMPARED TO SAPR: ASO



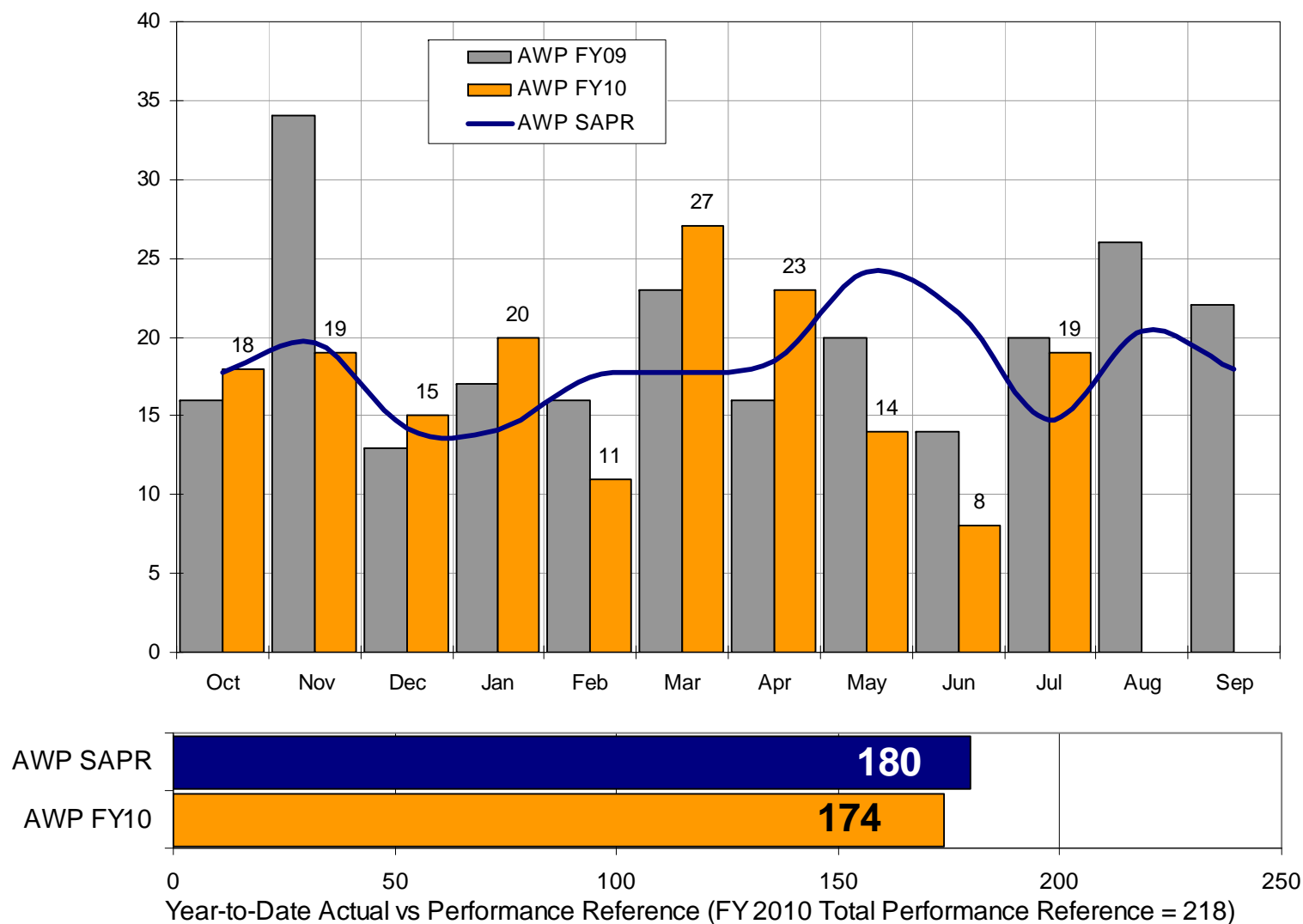
# FY2010 MONTHLY RI COUNT COMPARED TO SEASONALLY ADJUSTED PERFORMANCE REFERENCE (SAPR): ASW



# FY2010 MONTHLY RI COUNT (BY TYPE) COMPARED TO SAPR: ASW



# FY2010 MONTHLY RI COUNT COMPARED TO SEASONALLY ADJUSTED PERFORMANCE REFERENCE (SAPR): AWP



# FY2010 MONTHLY RI COUNT (BY TYPE) COMPARED TO SAPR: AWP

