

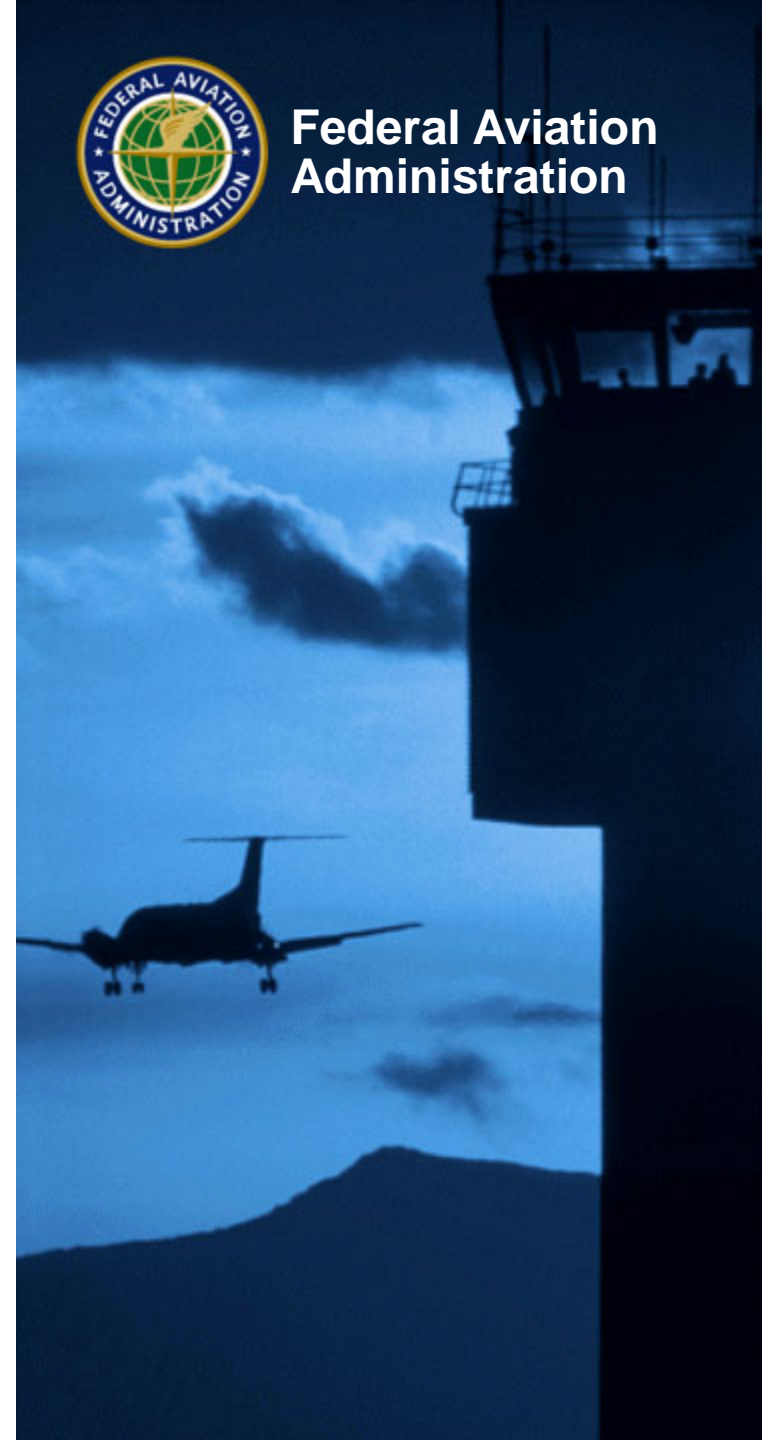
Airport and Airway Trust Fund (AATF)

Fact Sheet

Updated: March 2018



Federal Aviation
Administration



AATF History

- Created by the Airport and Airway Development and Revenue Act of 1970 to finance aviation programs
 - Revenues are derived from aviation-related excise taxes on passengers, cargo, and fuel
 - Provides funding for capital improvements to the U.S. airport and airways system
- Provides the majority of funding for the Federal Aviation Administration
 - 80.10% in FY 2014
 - 92.77% in FY 2015
 - 87.79% in FY 2016
 - 94.80% in FY 2017
 - 86.89% in FY 2018



AATF Funds these accounts

- **FAA accounts:**
 - Grants-in-Aid for Airports
 - Facilities and Equipment
 - Research, Engineering, and Development
 - Operations (partly supported by the AATF with the rest of budgetary resources coming from the General Fund)
- **Department of Transportation accounts:**
 - Essential Air Services (EAS) program

The General Fund can also contribute to Facilities & Equipment and Airports accounts. Examples include the American Recovery and Reinvestment Act of 2009 (ARRA) and, more recently, the FY 2018 Consolidated Appropriations Act.

Trust Fund Excise Taxes Structure

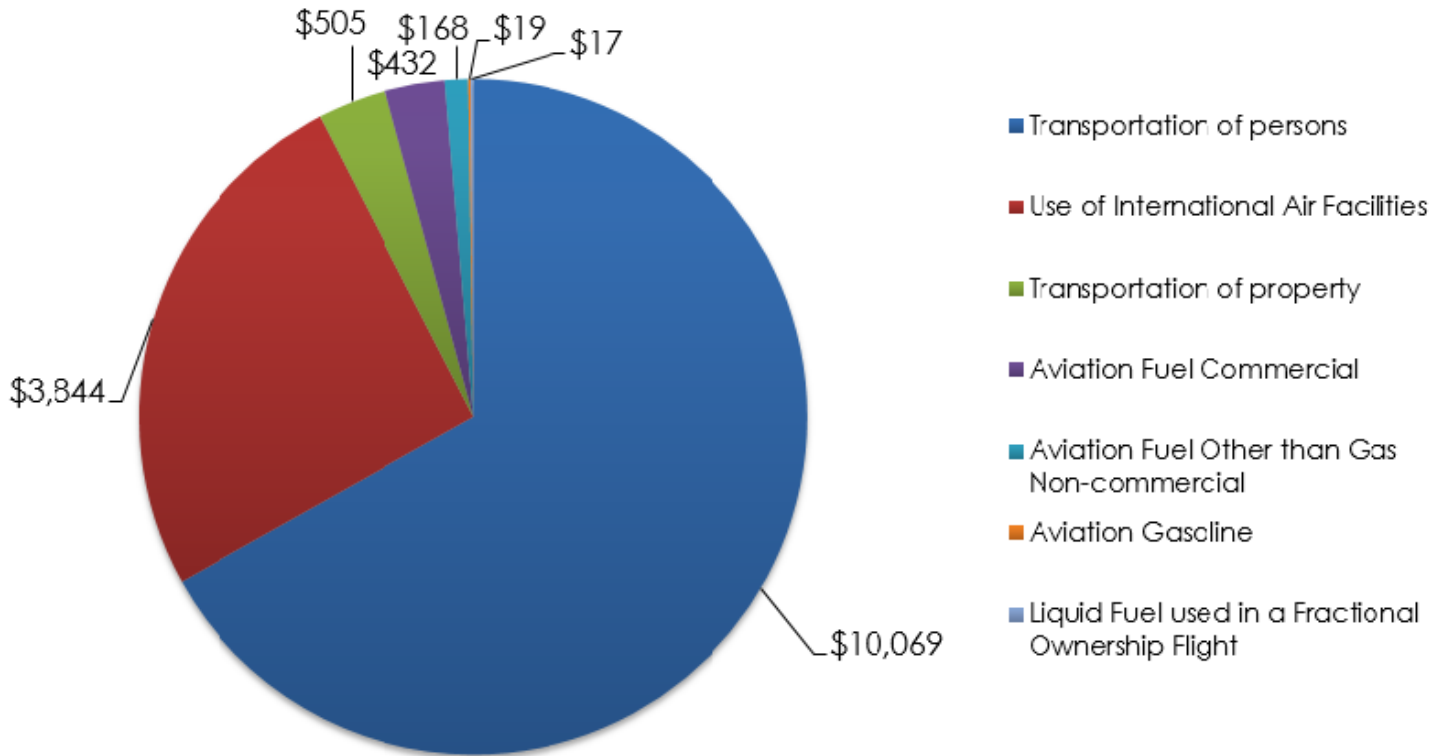
Trust Fund Excise Tax Revenue Sources

➔ Rates effective as of January 1, 2018

- Domestic passenger ticket tax ➔ • 7.5 percent
- Domestic flight segment tax (excluding flights to or from rural airports) ➔ • \$4.20 per passenger per segment; indexed to the Consumer Price Index
- Tax on flights between the continental United States and Alaska or Hawaii (or between Alaska and Hawaii) ➔ • \$9.20 per passenger; indexed to the Consumer Price Index
- International arrival and departure tax ➔ • \$18.30 per passenger; indexed to the Consumer Price Index
- Tax on mileage awards (frequent flyer awards tax) ➔ • 7.5 percent of value of miles
- Domestic commercial fuel tax ➔ • 4.3 cents per gallon
- Domestic general aviation gasoline tax ➔ • 19.3 cents per gallon
- Domestic general aviation jet fuel tax ➔ • 21.8 cents per gallon Note: Effective after March 31, 2012 a 14.1 cents per gallon surcharge for fuel used in fractional ownership flights
- Tax on domestic cargo or mail ➔ • 6.25 percent on the price paid for transportation of domestic cargo or mail

AATF FY 2017 Excise Tax Revenues

(in millions of dollars)



Total excise tax revenues \$15,054M

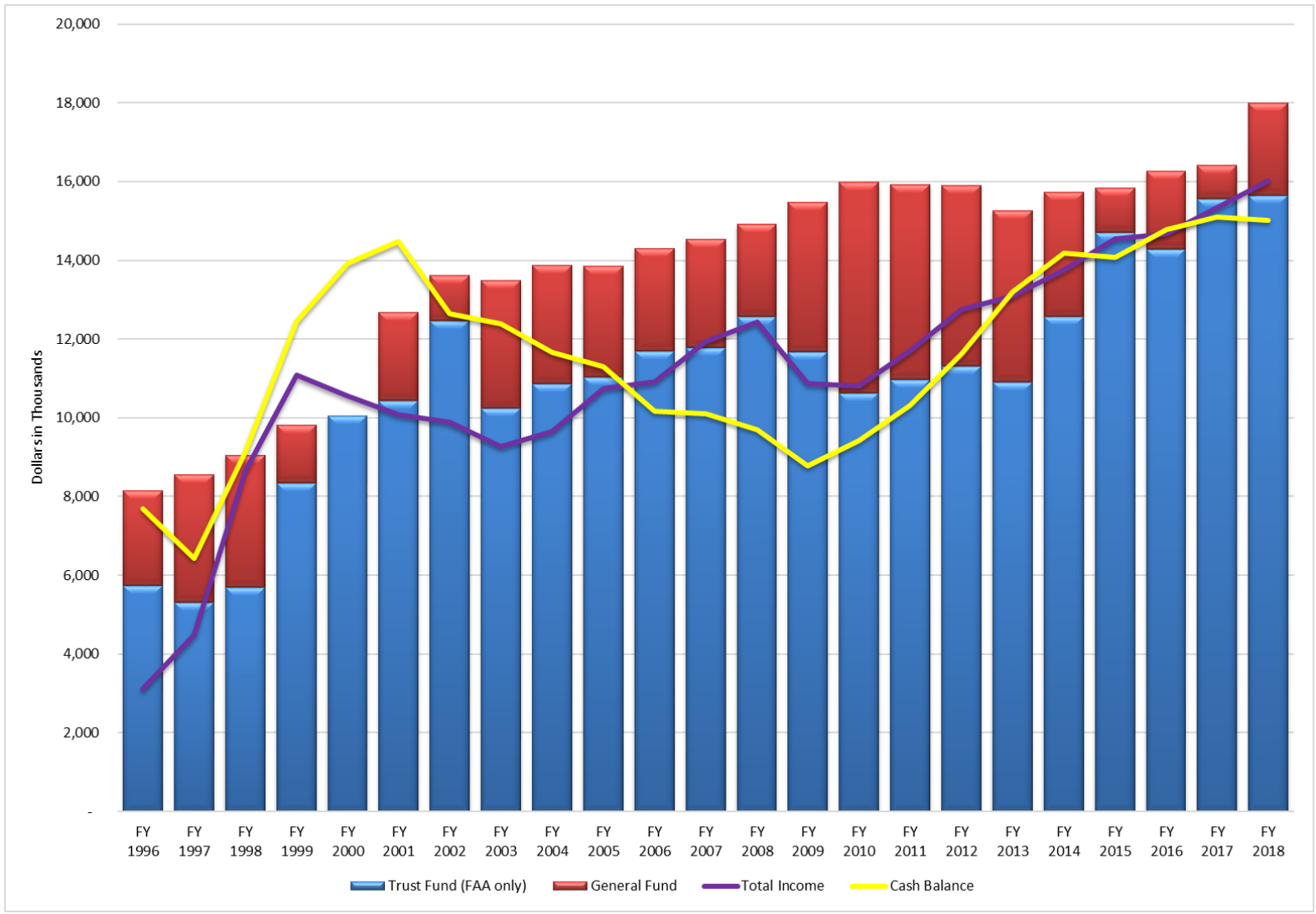
FAA Accounts & AATF Funding

(in thousands of dollars)

ACCOUNT NAME	FY 2015 ACTUAL	FY 2016 ACTUAL	FY 2017 ACTUAL	FY 2018 ACTUAL	FY 2019 BUDGET REQUEST
Operations	\$9,740,700	\$9,909,724	\$10,025,852	\$10,211,754	\$9,931,312
General	\$1,145,700	\$1,987,724	\$852,852	\$1,360,754	\$1,298,591
AATF	\$8,595,000	\$7,922,000	\$9,173,000	\$8,851,000	\$8,632,721
Facilities & Equipment					
AATF	\$2,600,000	\$2,855,000	\$2,855,000	\$3,250,000	\$2,766,572
Research, Engineering & Development					
AATF	\$156,750	\$166,000	\$176,000	\$188,926	\$74,406
Grants in Aid for Airports	\$3,220,000	\$3,350,000	\$3,350,000	\$4,350,000	\$3,350,000
General				\$1,000,000	
Contract Authority (AATF)	\$3,350,000	\$3,350,000	\$3,350,000	\$3,350,000	\$3,350,000
Pop Up Contract Authority (49 USC 48112)	\$130,000				
Rescission	(\$260,000)				
TOTAL:	\$15,717,450	\$16,280,724	\$16,406,852	\$18,000,680	\$16,122,290
[General]	\$1,145,700	\$1,987,724	\$852,852	\$2,360,754	\$1,298,591
[AATF]	\$14,571,750	\$14,293,000	\$15,554,000	\$15,639,926	\$14,823,699



General Fund/Trust Fund Share



FY 2018 End of Year Income and Cash Balance are based on Department of Treasury projections.



AATF Tax Revenue Trends

AATF Tax Revenues FY 2000-2017 (millions)

