

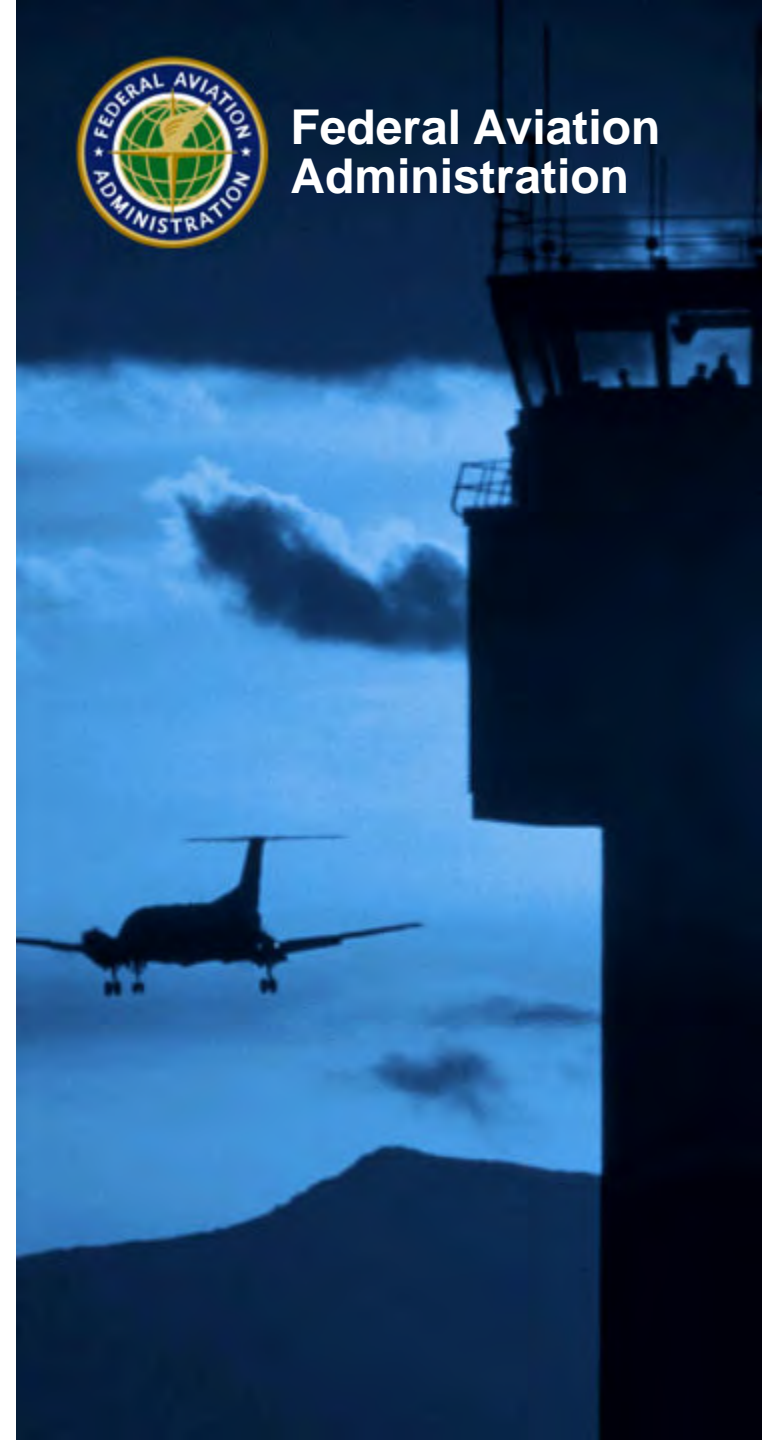
Airport and Airway Trust Fund (AATF)

Fact Sheet

Updated: April 2020



Federal Aviation
Administration



AATF History

- Created by the Airport and Airway Development and Revenue Act of 1970 to finance aviation programs
 - Revenues are derived from aviation-related excise taxes on passengers, cargo, and fuel
 - Provides funding for capital improvements to the U.S. airport and airways system
- Provides the majority of funding for the Federal Aviation Administration
 - 94.8% in FY 2017
 - 86.9% in FY 2018
 - 93.8% in FY 2019
 - 97.0% in FY 2020



AATF Funds these accounts

- **FAA accounts:**
 - Grants-in-Aid for Airports
 - Facilities and Equipment
 - Research, Engineering, and Development
 - Operations (partly supported by the AATF with the rest of budgetary resources coming from the General Fund)
- **Department of Transportation accounts:**
 - Essential Air Service (EAS) program

Grants-in-Aid for Airports has been supplemented by \$1.9 billion from the General Fund from FY18 – FY20. The General Fund can also contribute to Facilities & Equipment and Airports accounts. An example includes the American Recovery and Reinvestment Act of 2009 (ARRA)

Trust Fund Excise Taxes Structure

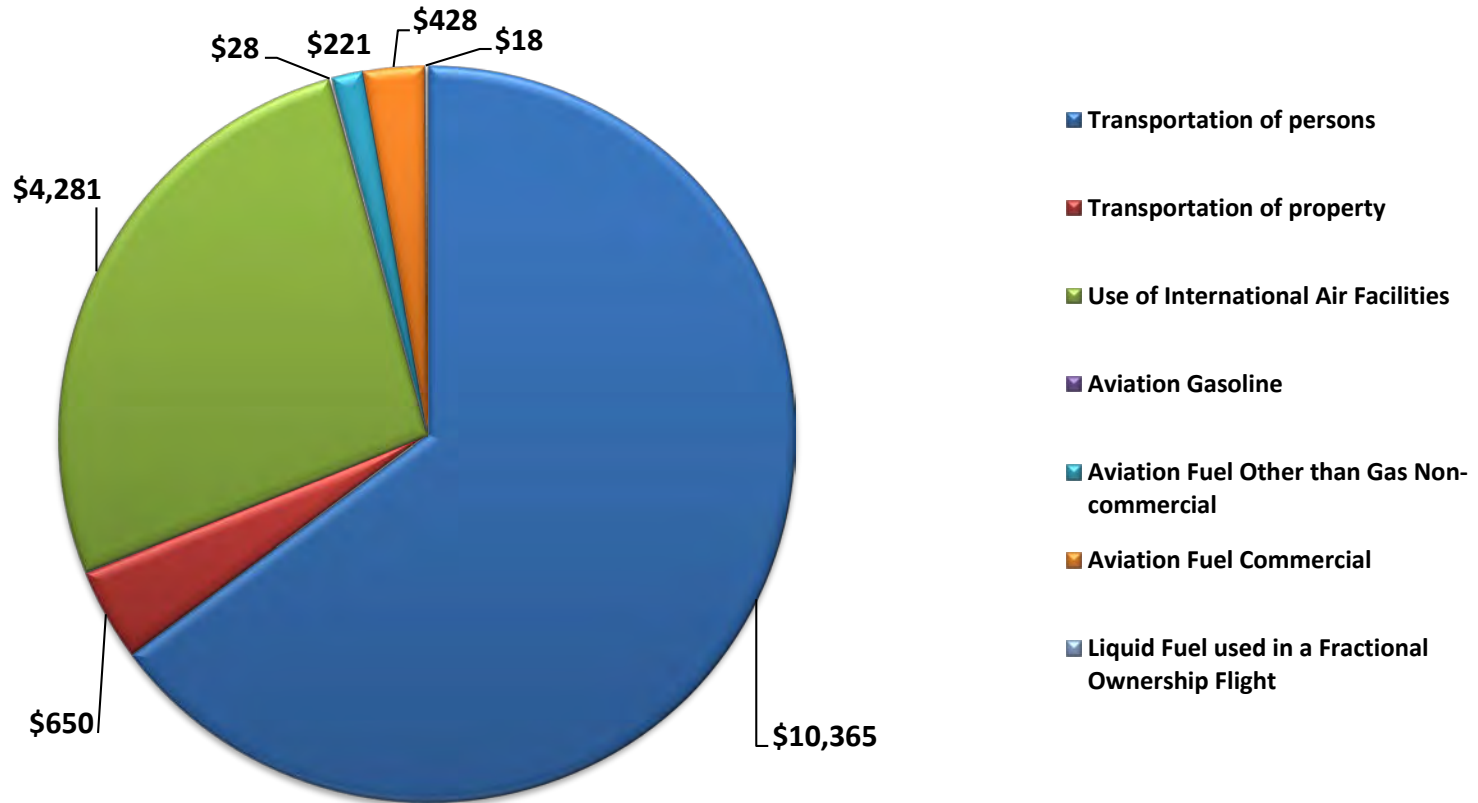
Trust Fund Excise Tax Revenue Sources

Rates effective as of January 1, 2020 for CY2020

- | | | |
|--|---|--|
| • Domestic passenger ticket tax | ➔ | • 7.5 percent |
| • Domestic flight segment tax (excluding flights to or from rural airports) | ➔ | • \$4.30 per passenger per segment; indexed to the Consumer Price Index |
| • Tax on flights between the continental United States and Alaska or Hawaii (or between Alaska and Hawaii) | ➔ | • \$9.50 per passenger; indexed to the Consumer Price Index |
| • International arrival and departure tax | ➔ | • \$18.90 per passenger; indexed to the Consumer Price Index |
| • Tax on mileage awards (frequent flyer awards tax) | ➔ | • 7.5 percent of value of miles |
| • Domestic commercial fuel tax | ➔ | • 4.3 cents per gallon |
| • Domestic general aviation gasoline tax | ➔ | • 19.3 cents per gallon |
| • Domestic general aviation jet fuel tax | ➔ | • 21.8 cents per gallon Note: Effective after March 31, 2012 a 14.1 cents per gallon surcharge for fuel used in fractional ownership flights |
| • Tax on domestic cargo or mail | ➔ | • 6.25 percent on the price paid for transportation of domestic cargo or mail |

AATF FY 2019 Excise Tax Revenues

(in millions of dollars)



Total excise tax revenue \$15,991*

*In FY19, there were refunds from the trust fund of \$4.9M for aviation fuel taxes and \$11.0M for aviation taxes other than gasoline.

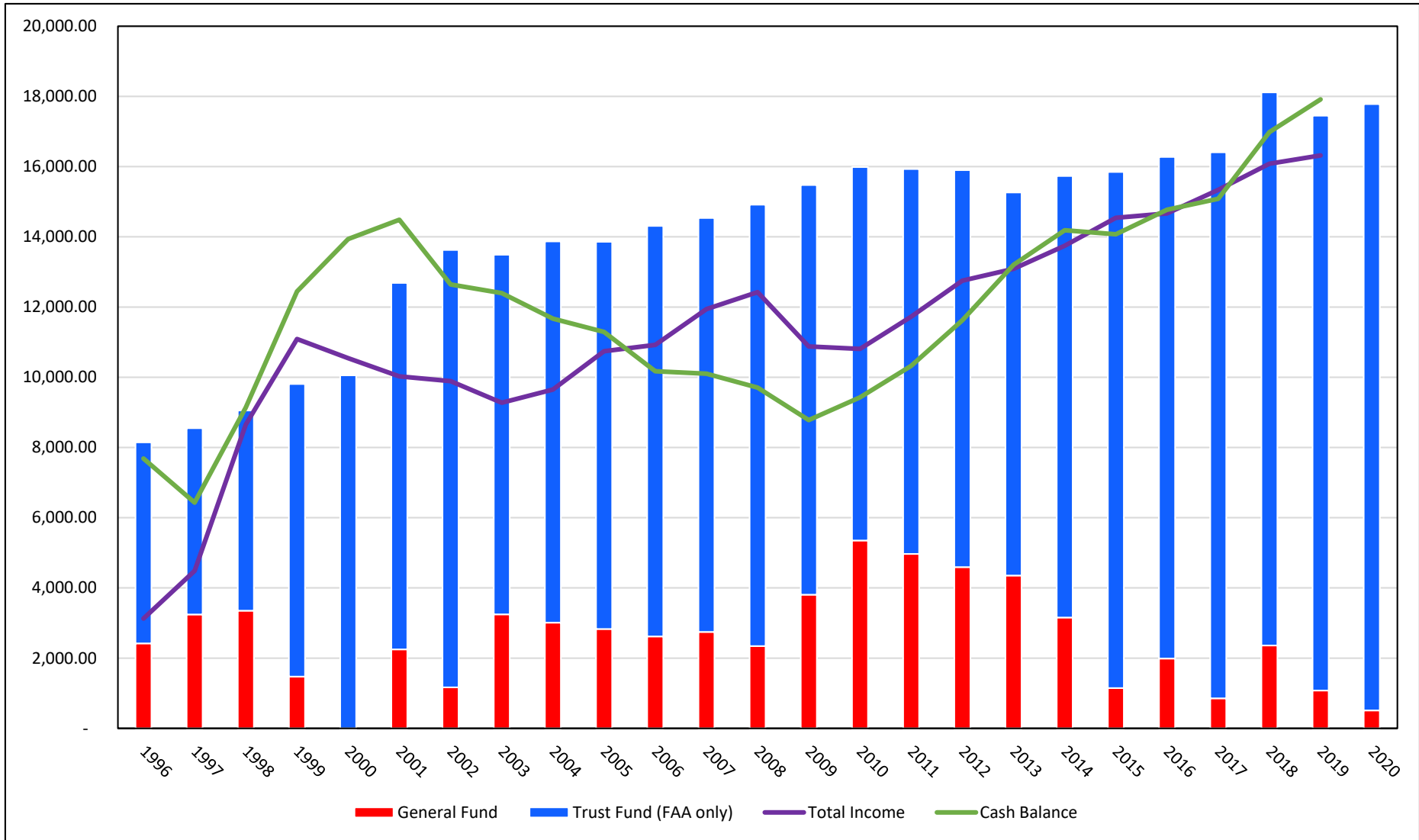
FAA Accounts & AATF Funding

(in thousands of dollars)

ACCOUNT NAME	FY 2016 ACTUAL	FY 2017 ACTUAL	FY 2018 ACTUAL	FY 2019 ACTUAL	FY2020 Enacted
Operations	\$9,909,724	\$10,025,852	\$10,211,754	\$10,410,800	\$10,630,000
General	\$1,987,724	\$852,852	\$1,360,754	\$577,400	\$111,000
AATF	\$7,922,000	\$9,173,000	\$8,851,000	\$9,833,400	\$10,519,000
Facilities & Equipment					
AATF	\$2,855,000	\$2,855,000	\$3,250,000	\$3,000,000	\$3,045,000
Research, Engineering & Development					
AATF	\$166,000	\$176,500	\$188,900	\$191,100	\$192,665
Grants in Aid for Airports	\$3,350,000	\$3,350,000	\$4,350,000	\$3,850,000	\$3,750,000
Contract Authority (AATF)	\$3,350,000	\$3,350,000	\$3,350,000	\$3,350,000	\$3,350,000
General Fund Payment to AIP			\$1,000,000	\$500,000	\$400,000
TOTAL:	\$16,280,724	\$16,407,352	\$18,000,654	\$17,451,900	\$17,617,665
[General]	\$1,987,724	\$852,852	\$2,360,754	\$1,077,400	\$511,111
[AATF]	\$14,293,000	\$15,554,500	\$15,639,900	\$16,374,500	\$17,106,554



General Fund/Trust Fund Share



AATF Tax Revenue Trends

AATF Tax Revenues FY 2002-2019 (millions)

