



AIRPORT DESIGN CHALLENGE

Airport Buildings

Student Workbook

Take a few moments to review the information on the Airport Buildings webpage and follow along in this workbook as you complete the content online. It doesn't include everything – just the things you need to work on!

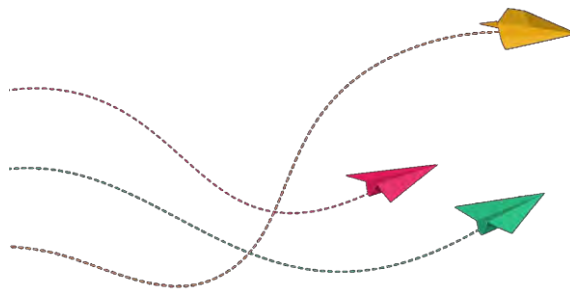
Have questions or comments? Please contact the Airport Design Challenge team at avsed.challenge@faa.gov.



Next Steps...

- Get your Airport Layout Plan from Module 3 and add your buildings! Hangars, terminals, air traffic control towers, etc. Look at the dimensions, how they are laid out, and what they're used for.
- Test your knowledge with the Airport Buildings Quiz!
- Add your buildings in Minecraft!
- Move on to Module 5: Innovation & Growth!

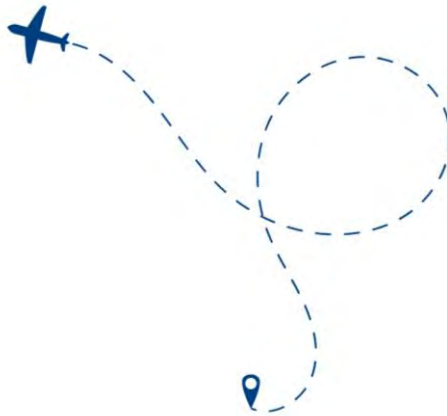
Let's build, learn, and fly together!





Check Your Knowledge! Airport Buildings Quiz

1. What is a hangar used for on an airport? Select all that apply.
 - Storing Aircraft
 - Aircraft Maintenance
 - Hanging Clothes in the Closet
 - Fueling Aircraft
2. True or False. Every airport must have some form of air traffic control, even if the controllers don't actually work in a tower.
 - True
 - False





Check Your Knowledge! Airport Buildings Quiz – Answer Key

1. All of them EXCEPT hanging clothes in the closet.

Hangars are primarily used for the storage, maintenance, and repair of aircraft. They provide a safe environment for aircraft, safeguarding them from weather, damage, and theft.

2. True!

Of the 5,100 public airports across the country, only about 10% have towers staffed by people who direct the flow of traffic.

