



Choosing Your Airport

Student Workbook

Take a few moments to review the information on the Choosing Your Airport webpage and follow along in this workbook as you complete the content online. It doesn't include everything – just the things you need to work on!

Have questions or comments? Please contact the Airport Design Challenge team at avsed.challenge@faa.gov.





Choosing Your Airport Steps

• Step 1

- Visit <https://www.airportiq5010.com/5010Web/> then type in the name of the city where you live.
 - **NOTE** – Large Large commercial airports are very big and very complex. Previous students have had much better luck at completing the challenge when they chose smaller, regional or local airports.
 - **NOTE** – If searching your city does not provide any results, try searching using the nearest major city.

• Step 2

- Look for airports that show a letter in the NPIAS Service Level column. Choose one of these airports to build in Minecraft.
 - **WARNING** – Using non-NPIAS airports will substantially limit your access to important airport information. Please only choose NPIAS airports.

• Step 3

- Click the name of the airport to open the Airport Master Record. This record will show you a satellite view of the airport, give you important contact information for the airport manager, and more! The 5010 Form will be very helpful to you throughout the challenge.
- On this screen, you can clearly identify the NPIAS service level and Hub Type of your airport.
 - **HINT** – After opening the airport record, look for the printer icon to get a downloaded and printable version of the 5010!



Choosing Your Airport Worksheet

- Airport Name: _____
- 3 Letter Code: _____
- NPIAS Indicator: _____
- Airport Manager: _____
- City, State: _____
- Competition Category (Circle One): Primary / Non-Primary

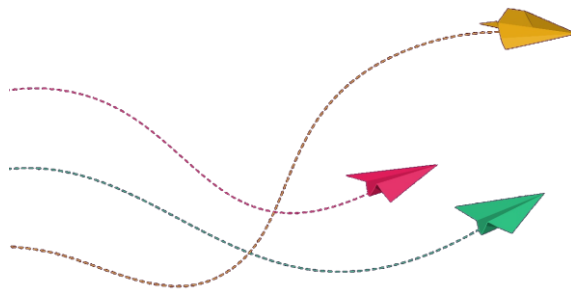
Are you going to try to plan an airport tour? If so, think through what how you're going to contact the airport / airport manager and what you'll say! Write your thoughts below and then follow the instructions on the webpage!



Next Steps...

- Test your knowledge with the Choose Your Airport Quiz!
- Move on to Module 1: Paved Surfaces and start building!

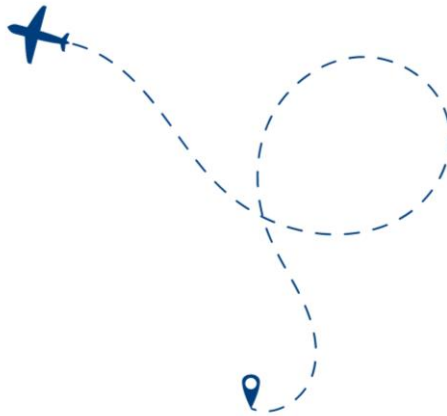
Let's build, learn, and fly together!





Check Your Knowledge! Choose Your Airport Quiz

1. What are the benefits of choosing an airport near your home to build for the challenge?
 - You can visit the airport in person.
 - You will understand more about your local community.
 - You will be able to work directly with airport management and staff.
 - All of the above.
2. What website should you visit to find an airport near you?
 - Airportiq5010.com/5010web
 - www.faa.gov
 - Allaboutairports.org
 - www.google.com
3. What kind of airport should you look for when choosing one to build?
 - Privately Owned Airport
 - NPAIS Airport





Check Your Knowledge! Choose Your Airport Quiz – Answer Key

1. All of the above!

If you choose an airport near your home and arrange to take a tour of it, you will learn all about your local community and what your airport provides. You will also get to work with the airport manager and staff to get help! So cool!

2. airportiq5010.com/5010web

Remember, you want to search on airportiq5010.com/5010web to get the Airport Master Record.

3. NPAIS Airport

There are approximately 14,400 private-use (closed to the public) and 5,000 public-use (open to the public) airports, heliports, and seaplane bases. Approximately 3,300 of these public-use facilities are included in the National Plan of Integrated Airport Systems (NPAIS). You will choose an NPAIS airport to develop using Minecraft!

