

Flight Procedures Cover Page	Task Action: P-NOTAM	Task Type: IAP	Estimated Chart Date: 05/14/2026	APWS Task ID: 00511D2E44E2425F9BB518C94E295D9C	APWS Project ID: 9E6404907F544E9DB870CF9EF277EB29
Procedure: GPS RWY 27 ORIG-E		Enroute: NO	Specialist: Johnson, Timothy		Agreement Number:
Airport ID: E45			Airport City: GROVELAND		State: CA
Facility ID:	Facility Type:	Flight Inspection Remark Type:			

**Procedure Comments:**

Visibility Initiative (Garmin) - Update IAP visibility minimums IAW Order 8260.3, Chapter 3, Section 3-3. Visibility Minimums.

PROCESSED IAW TECHNICAL SUPPORT GROUP (AJF-17) MEMO DATED 07/07/2021, SUBJECT: GUIDANCE FOR PROCEDURAL CHANGES REQUIRING FLIGHT INSPECTION/VALIDATION.

CONTACT: CASEY HILL (405) 954-0624.

QUALITY  
6 SN 2/20/26  
CHECKED

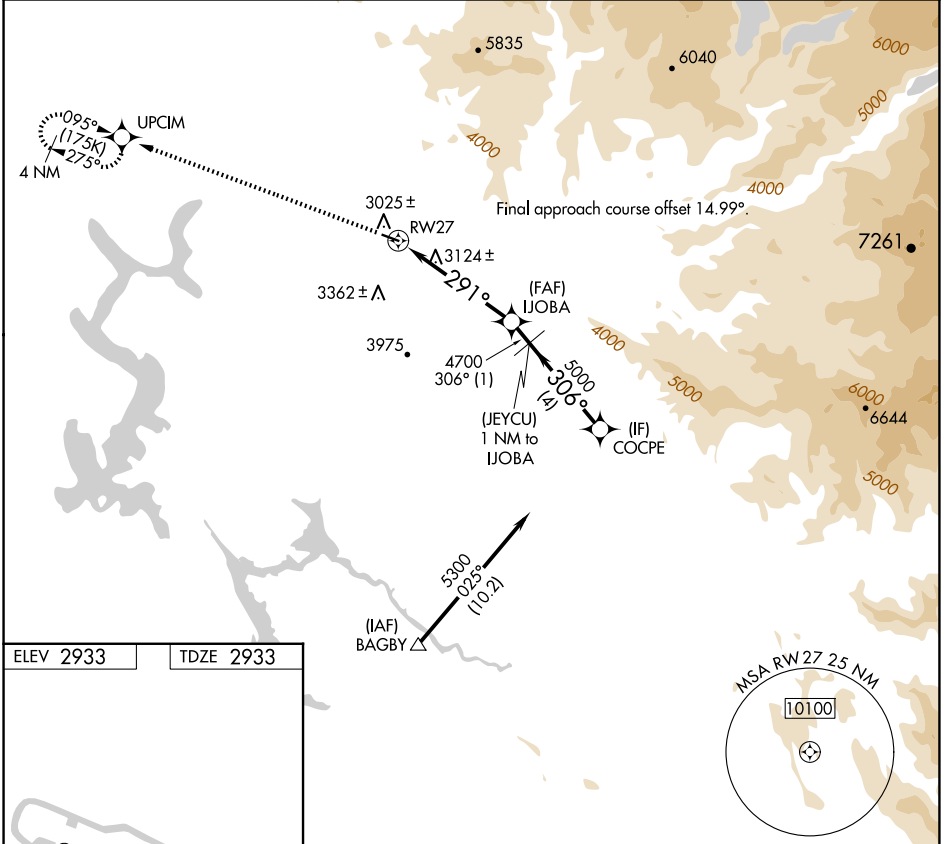
QUALITY  
9  
CHECKED  
BEGUE

APP CRS	Rwy Idg	<b>3624</b>
<b>291°</b>	TDZE	<b>2933</b>
	Apt Elev	<b>2933</b>

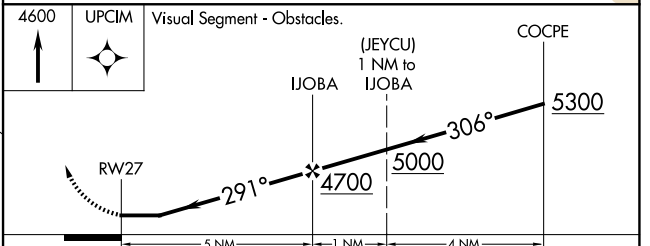
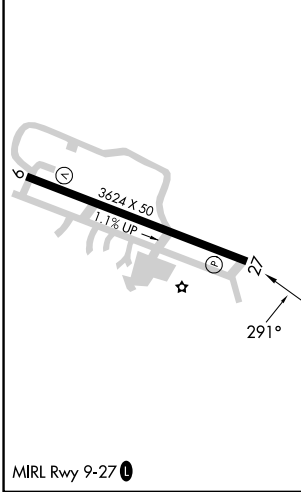
**GPS RWY 27**  
PINE MOUNTAIN LAKE (E45)

<p><b>⚠</b> NA Procedure NA at night. Rwy 27 helicopter visibility reduction below 1 SM NA. Use Columbia altimeter setting.</p>	<p>MISSED APPROACH: Climb to 4600 direct UPCIM and hold.</p>
---	--

O22 AWOS-3 <b>124.65</b>	OAKLAND CENTER <b>121.25 327.0</b>	CTAF <b>122.9</b>
-----------------------------	---------------------------------------	----------------------



ELEV 2933	TDZE 2933
-----------	-----------



CATEGORY	A	B	C	D
S-27	3860-1 927 (1000-1)	3860-1¼ 927 (1000-1¼)		NA

SW-2, 19 FEB 2026 to 19 MAR 2026

SW-2, 19 FEB 2026 to 19 MAR 2026