

Flight Procedures Cover Page	Task Action: FLIGHT CHECK	Task Type: IAP	Estimated Chart Date: 10/02/2025	APWS Task ID: F410CAE84B74405C9E719816D1799C53	APWS Project ID: D7532AC2C9F540A9ABFB66054A6F98D4
Procedure: RNAV (GPS) RWY 21 AMDT 1C		Enroute: NO	Specialist: Dunn, Timothy		Agreement Number:
Airport ID: KCWI			Airport City: CLINTON		State: IA
Facility ID:	Facility Type:	Flight Inspection Remark Type: New FC Slot			

Procedure Comments:
Contact Kyle Thompson 405-954-2135

QUALITY
6 SN 6/10/25
CHECKED

QUALITY
9
CHECKED
BEGUE

WAAS CH 86829 W21A	APP CRS 210°	Rwy Idg TDZE Apt Elev	5204 708 708
---------------------------------	------------------------	-----------------------------	---

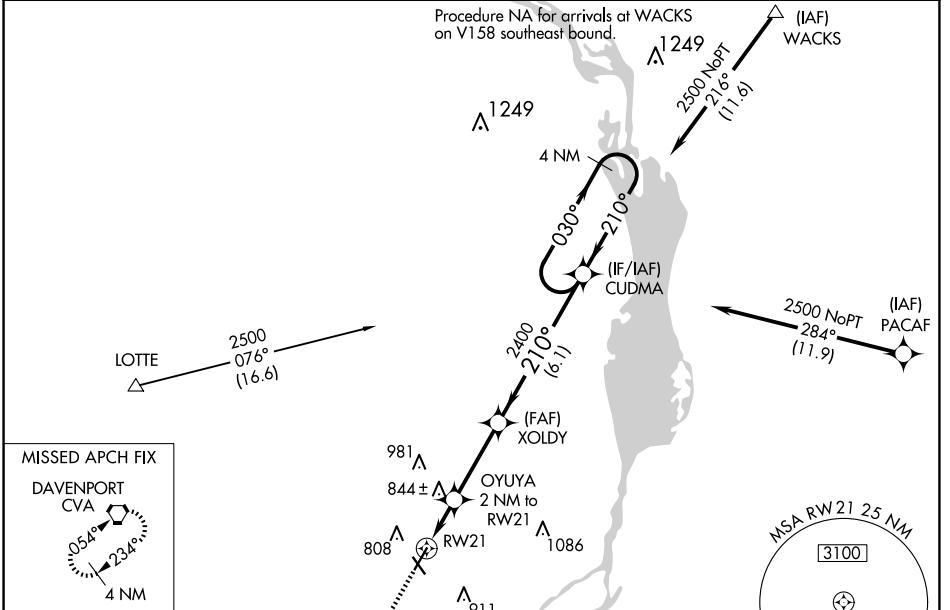
RNAV (GPS) RWY 21

CLINTON MUNI (CWI)

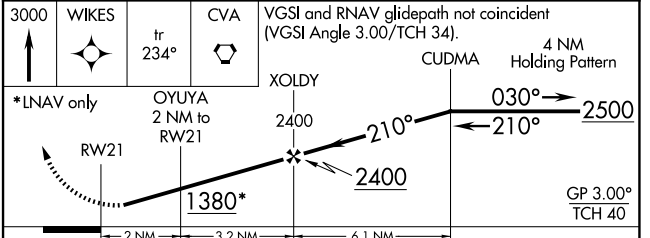
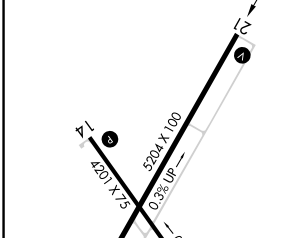
⚠ Rwy 21 helicopter visibility reduction below ¾ SM NA. Baro-VNAV NA when using Davenport altimeter setting. For uncompensated Baro-VNAV systems, LNAV/VNAV NA below -16°C (4°F) or above 54°C (130°F). DME/DME RNP-0.3 NA. When local altimeter setting not received, use Davenport altimeter setting: increase all DA 47 feet and all MDA 60 feet. Increase LNAV Cat C visibility ¼ mile.

MISSED APPROACH: Climb to 3000 direct WIKES and on track 234° to CVA VORTAC and hold.

AWOS-3PT 125.525	QUAD CITY APP CON * 125.95 257.8	CLNC DEL 118.5 0	CTAF 122.9
----------------------------	--	----------------------------	----------------------



ELEV 708	D	TDZE 708
----------	----------	----------



CATEGORY	A	B	C	D
LPV DA	958-1 250 (300-1)			NA
LNAV/VNAV DA	958-1 250 (300-1)			NA
LNAV MDA	1100-1	392 (400-1)	1100-1½ 392 (400-1½)	NA
C CIRCLING	1140-1 432 (500-1)	1240-1 532 (600-1)	1240-1½ 532 (600-1½)	NA

REIL Rwy 14 and 21 **Ⓛ**
MIRL Rwy 14-32 **Ⓛ**
HIRL Rwy 3-21 **Ⓛ**

NC-3, 17 APR 2025 to 15 MAY 2025

NC-3, 17 APR 2025 to 15 MAY 2025

KCWI
CLINTON MUNI
CLINTON, IA
RNAV (GPS) RWY 21
AMDT: 1C
1:100K
LNAV/VNAV FINAL

