

Flight Procedures Cover Page	Task Action: FLIGHT CHECK	Task Type: IAP	Estimated Chart Date: 03/21/2024	APWS Task ID: 00D780781B6C4DD1B634507CFBD5EB3E	APWS Project ID: 0469CE46F48A4ABDA01F28835777123
Procedure: RNAV (GPS) RWY 19 AMDT 2D		Enroute: NO	Specialist: Boone-walt, Rose		Agreement Number:
Airport ID: KEDE			Airport City: EDENTON		State: NC
Facility ID:	Facility Type:	Flight Inspection Remark Type: New FC Slot			

Procedure Comments:
Clears NTM - FDC 3/0094

CONTACT: DAVID M. DANNER AJV-A421 LEAD: 405.954.5077



WAAS CH 90503 W19A	APP CRS 190°	Rwy Idg TDZE Apt Elev	6001 20 20
--	------------------------	-----------------------------	---------------------------------------

OLD

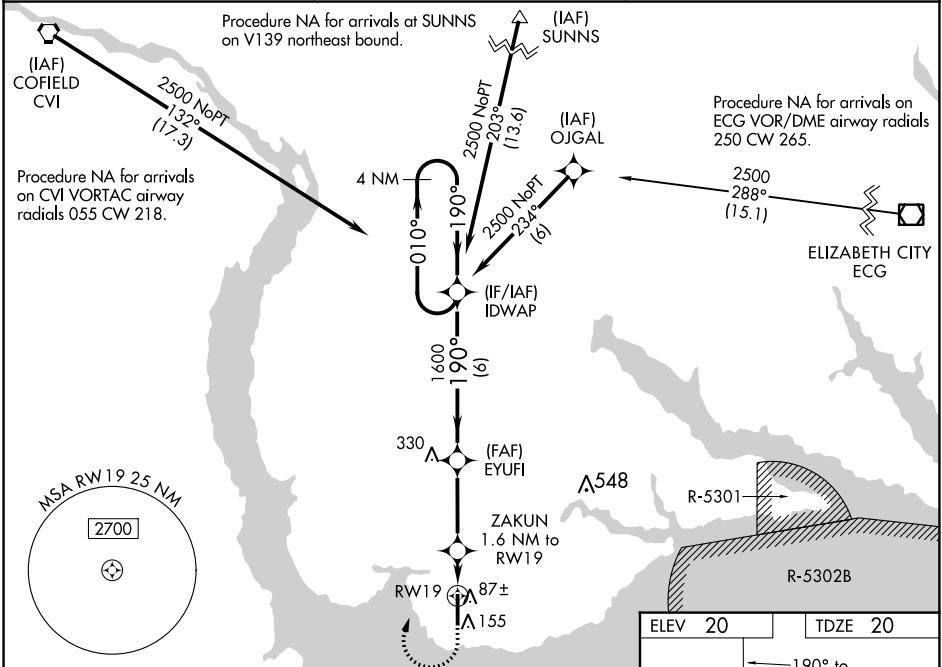
RNAV (GPS) RWY 19
NORTHEASTERN RGNL (E/D/E)

RNP APCH.

⚠ Baro-VNAV NA when using Elizabeth City altimeter setting. For uncompensated Baro-VNAV systems, LNAV/VNAV NA below -15°C or above 43°C. When local altimeter setting not received, use Elizabeth City altimeter setting and increase LPV DA to 275 LNAV/VNAV DA to 325 and all MDA 60 feet, increase LPV all Cats and LNAV Cat C/D visibility 1/8 mile and LNAV/VNAV visibility all Cats 1/4 mile. VDP NA when using Elizabeth City altimeter setting.

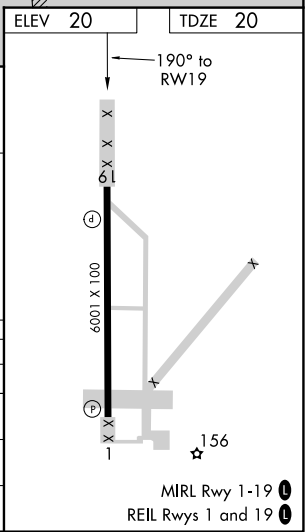
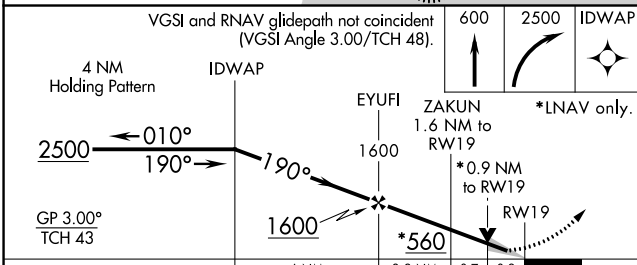
MISSED APPROACH:
Climb to 600 then right turn to 2500 direct IDWAP and hold.

AWOS-3 118.275	WASHINGTON CENTER 123.85 279.65	UNICOM 123.0 (CTAF) 0
--------------------------	---	---------------------------------



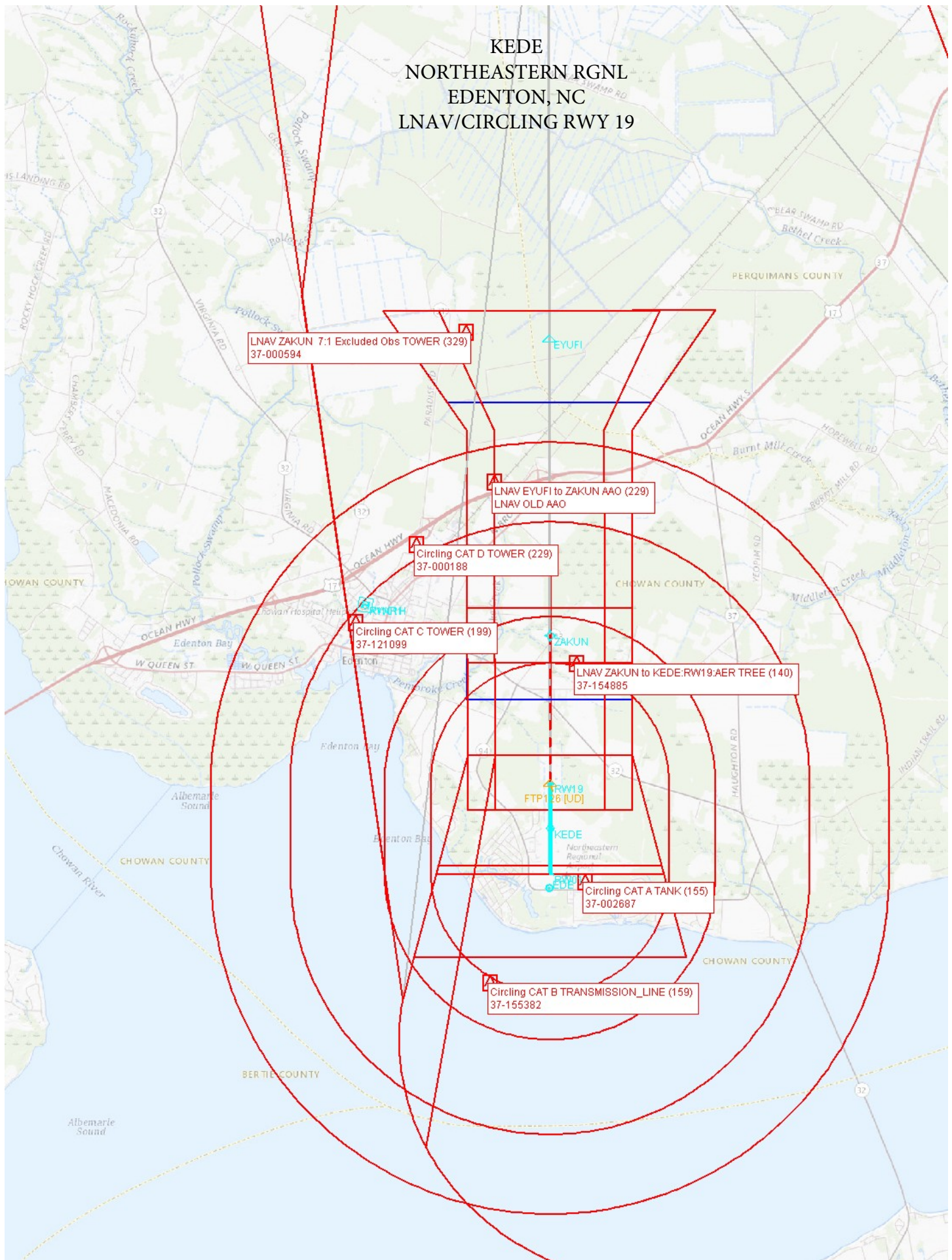
SE-2, 05 OCT 2023 to 02 NOV 2023

SE-2, 05 OCT 2023 to 02 NOV 2023



CATEGORY	A	B	C	D
LPV DA		220-3/4	200 (200-3/4)	
LNAV/VNAV DA		270-3/4	250 (300-3/4)	
LNAV MDA		340-1	320 (400-1)	
CIRCLING	520-1	500 (500-1)	560-1 1/2 540 (600-1 1/2)	580-2 560 (600-2)

KEDE
NORTHEASTERN RGNL
EDENTON, NC
LNAV/CIRCLING RWY 19



KEDE
NORTHEASTERN RGNL
EDENTON, NC
LNAV/VNAV RWY 19

