

Flight Procedures Cover Page	Task Action: Abbreviated Amendment	Task Type: STAR	Estimated Chart Date: 05/14/2026	APWS Task ID: 01AEA4A894ED4EEA80A75CEB88962C74	APWS Project ID: C503BE90164248B4B1B28FB488BE1613
Procedure: RAVNN (RNAV) NINE ARRIVAL		Enroute: YES	Specialist: Copeland, Guy		Agreement Number:
Airport ID: KBWI			Airport City: BALTIMORE		State: MD
Facility ID:	Facility Type:	Flight Inspection Remark Type:			

**Procedure Comments:**

PROCESSED IAW TECHNICAL SUPPORT GROUP (AJF-17) MEMO DATED 07/07/2021, SUBJECT: GUIDANCE FOR PROCEDURAL CHANGES REQUIRING FLIGHT INSPECTION VALIDATION.

CONTACT CASIMIR TABAKA, AJV-A432 405-202-7857



01/15/2026



# RAVNN EIGHT ARRIVAL (RNAV) Transition Routes

BALTIMORE, MARYLAND

NE-3, 02 OCT 2025 to 30 OCT 2025

RNAV 1 - DME/DME/IRU or GPS.  
RADAR required.

POTOMAC APP CON  
128.35 270.275  
BWI D-ATIS  
115.1 127.8  
MTN ATIS 124.925

NOTE: Jet aircraft only.  
NOTE: All part 91, 101, 103, 105, 125,  
133, 135, and 137 flight  
operations are prohibited on  
the CACYE/CJAAE/JOOEY transitions.



See following page for Arrival Routes.  
CAPKO  
9000 250K

CACYE TRANSITION (CACYE.RAVNN8)  
CJAAE TRANSITION (CJAAE.RAVNN8)  
HBUDA TRANSITION (HBUDA.RAVNN8): (ATC assigned only).  
JOOEY TRANSITION (JOOEY.RAVNN8): (ATC assigned only).  
THHMP TRANSITION (THHMP.RAVNN8)

(CONTINUED ON FOLLOWING PAGE)

NOTE: Chart not to scale.

# RAVNN EIGHT ARRIVAL (RNAV) Transition Routes

BALTIMORE, MARYLAND

NE-3, 02 OCT 2025 to 30 OCT 2025

(CAPKO.RAVNN8) 25107

**OLD**

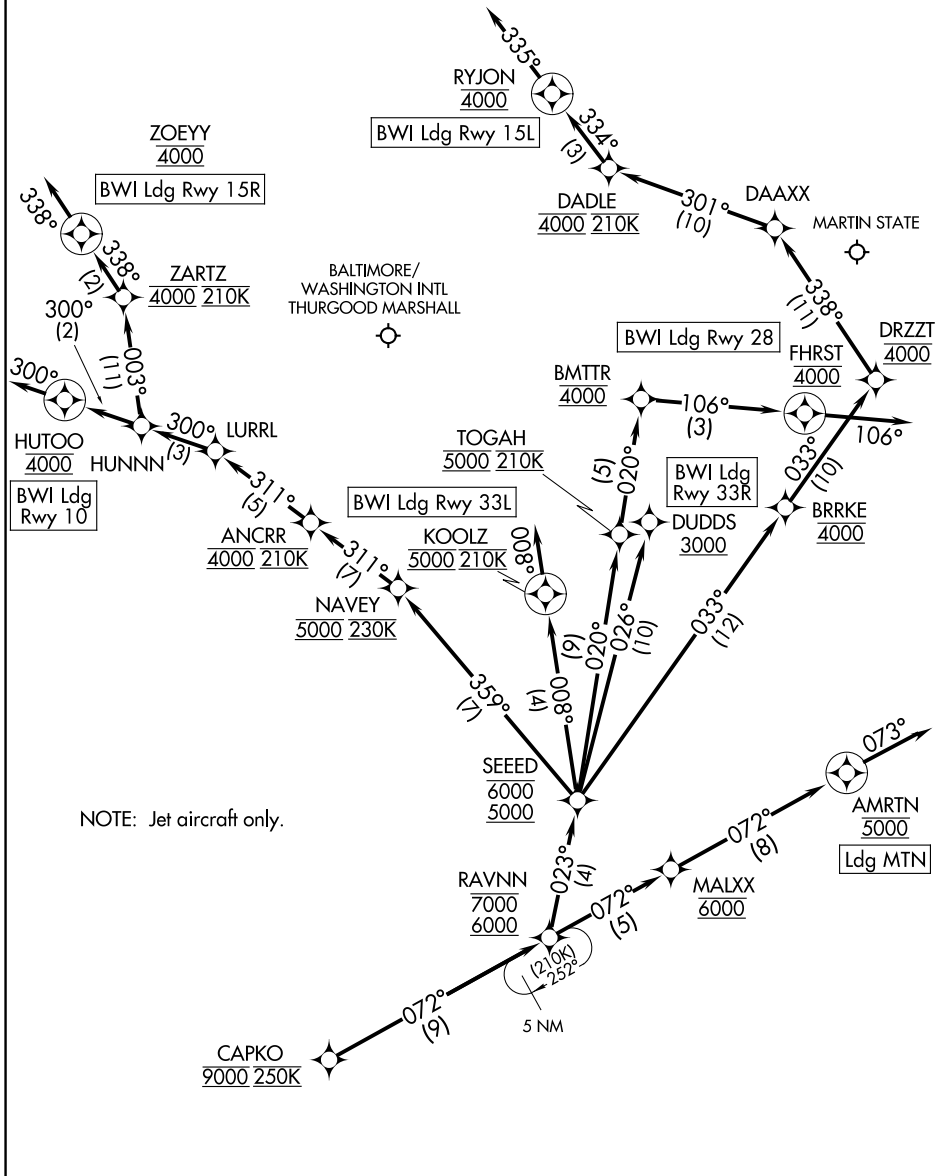
AL-804 (FAA)

# RAVNN EIGHT ARRIVAL (RNAV) Arrival Routes

BALTIMORE, MARYLAND

POTOMAC APP CON  
128.35 270.275  
BWI D-ATIS  
115.1 127.8  
MTN ATIS  
124.925

RNAV 1 - DME/DME/IRU or GPS.  
RADAR required.



NE-3, 02 OCT 2025 to 30 OCT 2025

NE-3, 02 OCT 2025 to 30 OCT 2025

(CONTINUED ON FOLLOWING PAGE)

# RAVNN EIGHT ARRIVAL (RNAV) Arrival Routes

BALTIMORE, MARYLAND

(CAPKO.RAVNN8) 17APR25

ARRIVAL ROUTE DESCRIPTION

BWI: From CAPKO on track 072° to cross RAVNN between 6000 and 7000.

LANDING BWI RUNWAY 10: From RAVNN on track 023° to cross SEED between 5000 and 6000, then on track 359° to cross NAVAY at 5000 and at 230K, then on track 311° to cross ANCR at 4000 and at 210K, then on track 311° to LURRL, then on track 300° to HUNNN, then on track 300° to cross HUTOO at 4000, then on track 300°. Expect RADAR vectors to final approach course.

LANDING BWI RUNWAY 15L: From RAVNN on track 023° to cross SEED between 5000 and 6000, then on track 033° to cross BRRKE at 4000, then on track 033° to cross DRZZT at 4000, then on track 338° to DAAX, then on track 301° to cross DADLE at 4000 and at 210K, then on track 334° to cross RYJON at 4000, then on track 335°. Expect RADAR vectors to final approach course.

LANDING BWI RUNWAY 15R: From RAVNN on track 023° to cross SEED between 5000 and 6000, then on track 359° to cross NAVAY at 5000 and at 230K, then on track 311° to cross ANCR at 4000 and at 210K, then on track 311° to LURRL, then on track 300° to HUNNN, then on track 003° to cross ZARTZ at 4000 and at 210K, then on track 338° to cross ZOEYY at 4000, then on track 338°. Expect RADAR vectors to final approach course.

LANDING BWI RUNWAY 28: From RAVNN on track 023° to cross SEED between 5000 and 6000, then on track 020° to cross TOGAH at 5000 and at 210K, then on track 020° to cross BMTTR at 4000, then on track 106° to cross FHRST at 4000, then on track 106°. Expect RADAR vectors to final approach course.

LANDING BWI RUNWAY 33L: From RAVNN on track 023° to cross SEED between 5000 and 6000, then on track 008° to cross KOOLZ at 5000 and at 210K, then on track 008°. Expect RADAR vectors to final approach course.

LANDING BWI RUNWAY 33R: From RAVNN on track 023° to cross SEED between 5000 and 6000, then on track 026° to cross DUDDS at or above 3000. Expect ILS or LOC Rwy 33R approach.

LANDING MTN: From CAPKO on track 072° to cross RAVNN between 6000 and 7000, then on track 072° to cross MALXX at 6000, then on track 072° to cross AMRTN at 5000, then on heading 073°. Expect RADAR vectors to final approach course.

NE-3, 02 OCT 2025 to 30 OCT 2025

NE-3, 02 OCT 2025 to 30 OCT 2025