

Flight Procedures Cover Page	Task Action: P-NOTAM	Task Type: IAP	Estimated Chart Date: 09/03/2026	APWS Task ID: 022C01B51A4649DBADD08DFFB5B5F372	APWS Project ID: 9BB66A66548E469A8B81ECF3E252D327
Procedure: RNAV (RNP) Z RWY 24L AMDT 2C		Enroute: NO	Specialist: Johnson, Timothy		Agreement Number:
Airport ID: KLAX			Airport City: LOS ANGELES		State: CA
Facility ID:	Facility Type:	Flight Inspection Remark Type:			

Procedure Comments:

Visibility Initiative (Garmin) - Update IAP visibility minimums IAW Order 8260.3, Chapter 3, Section 3-3. Visibility Minimums.

PROCESSED IAW TECHNICAL SUPPORT GROUP (AJF-17) MEMO DATED 07/07/2021, SUBJECT: GUIDANCE FOR PROCEDURAL CHANGES REQUIRING FLIGHT INSPECTION/VALIDATION.

CONTACT: CASEY HILL (405) 954-0624.



RNAV (RNP) Z RWY 24L


LOS ANGELES INTL (LAX)

APP CRS	Rwy Ldg	9483
251°	TDZE	123
	Apt Elev	128

RNP AR APCH.

Simultaneous approach authorized. Simultaneous approach authorized with HHR.
 For uncompensated Baro-VNAV systems, procedure NA below 5°C or above 54°C. For inop ALS, increase RNP 0.15 all Cats visibility to 1 3/8 SM.

MALS R

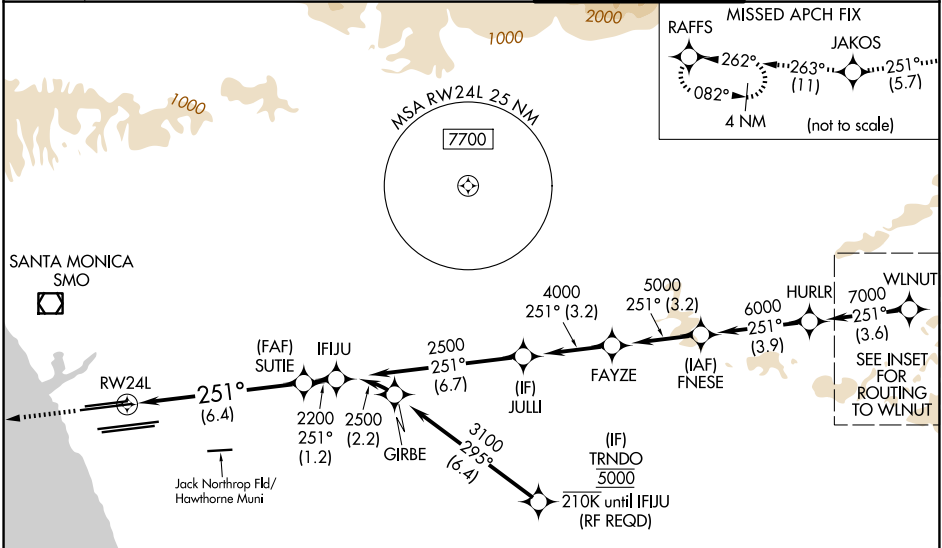


MISSED APPROACH: Climb to 2000 on track 251° to JAKOS and track 263° to RAFFS and hold.

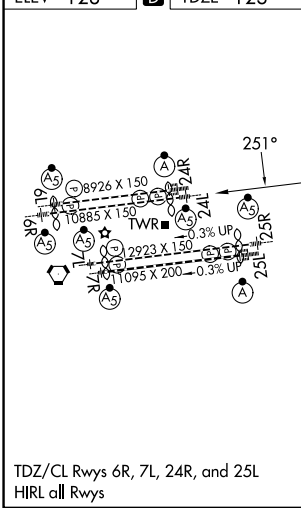
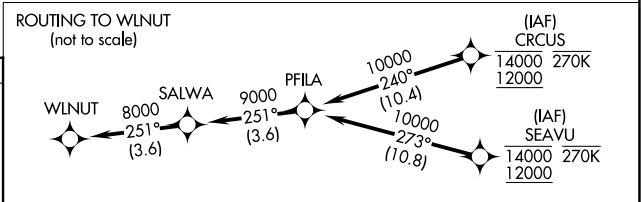
D-ATIS	124.3 363.2 (APCH from W)	SOCAL APP CON	124.9 269.0 (090°-224°)
133.8	124.5 235.975 (225°-044°)		128.5 360.7 (045°-089°)

LOS ANGELES TOWER	133.9 239.3 (N)
	120.95 379.1 (S)

GND CON	121.65 327.0 (N)
	121.75 327.0 (S)
	121.4 327.0 (W)



ELEV	128	D	TDZE	123
------	------------	----------	------	------------



2000	JAKOS	fr 263°	RAFFS	See planview for multiple IF locations.
tr 251°				
VGSi and RNAV glidepath not coincident (VGSi Angle 3.00/TCH 79).				
	SUTIE	IFJU		
	2200	2500		
	RW24L			GP 3.00° TCH 59

CATEGORY	A	B	C	D
RNP 0.15 DA		545/35	422 (500-5%)	
RNP 0.30 DA		592/45	469 (500-7%)	

AUTHORIZATION REQUIRED

SW-3, 19 MAR 2026 to 16 APR 2026

SW-3, 19 MAR 2026 to 16 APR 2026