

FEDERAL AVIATION ADMINISTRATION
 FLIGHT STANDARDS SERVICE
 STANDARD TERMINAL ARRIVAL (STAR)

Bearings, headings, courses, tracks and radials are magnetic. Elevations and altitudes are in feet, MSL. Altitudes are minimum altitudes unless otherwise indicated.
 Ceilings are in feet above airport elevation. Distances are in nautical miles. Visibilities are in statute miles or feet RVR unless otherwise indicated.

Arrival Name BNFSH (RNAV)	Number THREE	STAR Computer Code BNFSH.BNFSH3	Superseded Number TWO	Dated 11/03/2022	Effective Date
-------------------------------------	------------------------	---	---------------------------------	----------------------------	----------------

TRANSITION ROUTES:

Transition Name	Transition Computer Codes	From FIX/NAVAID	To FIX/NAVAID	Course	Distance	MEA	MOCA	MAA	Crossing Altitudes / Fixes
FIROL	FIROL.BNFSH3	FIROL	FIROL						
			JITIL	272.26	36.65	12000	1500		
			REPEE	271.78	39.60	12000	1500		
			MUNRO	271.85	31.75	12000	1500		
			BICAP	275.09	28.85	12000	1300		AT/ABOVE FL190
			ENRGY	247.53	10.60	10000	1300		AT/BELOW 16000
			WOOSA	232.62	06.51	8000	1300		
			CASTT	240.26	06.16	8000	1300		AT/ABOVE 12000
			BNFSH	240.22	07.49	8000	1300		AT/ABOVE 11000
GELDE	GELDE.BNFSH3	GELDE	GELDE						AT/ABOVE 17000
			ENRGY	202.49	10.53	10000	1300		AT/BELOW 16000
			WOOSA	232.62	06.51	8000	1300		
			CASTT	240.26	06.16	8000	1300		AT/ABOVE 12000
			BNFSH	240.22	07.49	8000	1300		AT/ABOVE 11000
HOAGG	HOAGG.BNFSH3	HOAGG	HOAGG						
			JORAY	191.73	86.86	FL200	1300		
			MOGAE	203.31	65.27	FL200	1300		
			WOLAP	203.13	16.11	FL200	1300		AT/ABOVE FL240
			CIKEN	203.08	10.00	FL200	1300		AT/ABOVE FL220
			GELDE	202.94	16.74	12000	1300		AT/ABOVE 17000
			ENRGY	202.49	10.53	10000	1300		AT/BELOW 16000
			WOOSA	232.62	06.51	8000	1300		
			CASTT	240.26	06.16	8000	1300		AT/ABOVE 12000
			BNFSH	240.22	07.49	8000	1300		AT/ABOVE 11000
MOGAE	MOGAE.BNFSH3	MOGAE	MOGAE						
			WOLAP	203.13	16.11	FL200	1300		AT/ABOVE FL240
			CIKEN	203.08	10.00	FL200	1300		AT/ABOVE FL220



FEDERAL AVIATION ADMINISTRATION
 FLIGHT STANDARDS SERVICE
 STANDARD TERMINAL ARRIVAL (STAR)

Bearings, headings, courses, tracks and radials are magnetic. Elevations and altitudes are in feet, MSL. Altitudes are minimum altitudes unless otherwise indicated.
 Ceilings are in feet above airport elevation. Distances are in nautical miles. Visibilities are in statute miles or feet RVR unless otherwise indicated.

Arrival Name	Number			STAR Computer Code	Superseded Number			Dated	Effective Date
BNFSH (RNAV)	THREE			BNFSH.BNFSH3	TWO			11/03/2022	
Transition Name	Transition Computer Codes	From FIX/NAVAID	To FIX/NAVAID	Course	Distance	MEA	MOCA	MAA	Crossing Altitudes / Fixes
			GELDE	202.94	16.74	12000	1300		AT/ABOVE 17000
			ENRGY	202.49	10.53	10000	1300		AT/BELOW 16000
			WOOSA	232.62	06.51	8000	1300		
			CASTT	240.26	06.16	8000	1300		AT/ABOVE 12000
			BNFSH	240.22	07.49	8000	1300		AT/ABOVE 11000
MORME	MORME.BNFSH3	MORME	MORME						
			POSSE	271.57	62.73	FL200	1300		AT/ABOVE FL240
			CIKEN	241.40	38.47	FL200	1300		AT/ABOVE FL220
			GELDE	202.94	16.74	12000	1300		AT/ABOVE 17000
			ENRGY	202.49	10.53	10000	1300		AT/BELOW 16000
			WOOSA	232.62	06.51	8000	1300		
			CASTT	240.26	06.16	8000	1300		AT/ABOVE 12000
			BNFSH	240.22	07.49	8000	1300		AT/ABOVE 11000
MUNRO	MUNRO.BNFSH3	MUNRO	MUNRO						
			BICAP	275.09	28.85	12000	1300		AT/ABOVE FL190
			ENRGY	247.53	10.60	10000	1300		AT/BELOW 16000
			WOOSA	232.62	06.51	8000	1300		
			CASTT	240.26	06.16	8000	1300		AT/ABOVE 12000
			BNFSH	240.22	07.49	8000	1300		AT/ABOVE 11000
REPEE	REPEE.BNFSH3	REPEE	REPEE						
			MUNRO	271.85	31.75	12000	1500		
			BICAP	275.09	28.85	12000	1300		AT/ABOVE FL190
			ENRGY	247.53	10.60	10000	1300		AT/BELOW 16000
			WOOSA	232.62	06.51	8000	1300		
			CASTT	240.26	06.16	8000	1300		AT/ABOVE 12000
			BNFSH	240.22	07.49	8000	1300		AT/ABOVE 11000
SNAGY	SNAGY.BNFSH3	SNAGY	SNAGY						
			HOVAX	242.01	51.36	FL200	1300		



FEDERAL AVIATION ADMINISTRATION
 FLIGHT STANDARDS SERVICE
 STANDARD TERMINAL ARRIVAL (STAR)

Bearings, headings, courses, tracks and radials are magnetic. Elevations and altitudes are in feet, MSL. Altitudes are minimum altitudes unless otherwise indicated.
 Ceilings are in feet above airport elevation. Distances are in nautical miles. Visibilities are in statute miles or feet RVR unless otherwise indicated.

Arrival Name	Number			STAR Computer Code	Superseded Number			Dated	Effective Date
BNFSH (RNAV)	THREE			BNFSH.BNFSH3	TWO			11/03/2022	
Transition Name	Transition Computer Codes	From FIX/NAVAID	To FIX/NAVAID	Course	Distance	MEA	MOCA	MAA	Crossing Altitudes / Fixes
			JORAY	241.60	85.66	FL200	1300		
			MOGAE	203.31	65.27	FL200	1300		
			WOLAP	203.13	16.11	FL200	1300		AT/ABOVE FL240
			CIKEN	203.08	10.00	FL200	1300		AT/ABOVE FL220
			GELDE	202.94	16.74	12000	1300		AT/ABOVE 17000
			ENRGY	202.49	10.53	10000	1300		AT/BELOW 16000
			WOOSA	232.62	06.51	8000	1300		
			CASTT	240.26	06.16	8000	1300		AT/ABOVE 12000
			BNFSH	240.22	07.49	8000	1300		AT/ABOVE 11000
SUMRS	SUMRS.BNFSH3	SUMRS	SUMRS						
			PAAZZ	266.02	58.52	FL200	1300		
			JORAY	265.50	74.21	FL200	1300		
			MOGAE	203.31	65.27	FL200	1300		
			WOLAP	203.13	16.11	FL200	1300		AT/ABOVE FL240
			CIKEN	203.08	10.00	FL200	1300		AT/ABOVE FL220
			GELDE	202.94	16.74	12000	1300		AT/ABOVE 17000
			ENRGY	202.49	10.53	10000	1300		AT/BELOW 16000
			WOOSA	232.62	06.51	8000	1300		
			CASTT	240.26	06.16	8000	1300		AT/ABOVE 12000
			BNFSH	240.22	07.49	8000	1300		AT/ABOVE 11000



FEDERAL AVIATION ADMINISTRATION
 FLIGHT STANDARDS SERVICE
 STANDARD TERMINAL ARRIVAL (STAR)

Bearings, headings, courses, tracks and radials are magnetic. Elevations and altitudes are in feet, MSL. Altitudes are minimum altitudes unless otherwise indicated.
 Ceilings are in feet above airport elevation. Distances are in nautical miles. Visibilities are in statute miles or feet RVR unless otherwise indicated.

Arrival Name	Number	STAR Computer Code	Superseded Number	Dated	Effective Date
BNFSH (RNAV)	THREE	BNFSH.BNFSH3	TWO	11/03/2022	

ARRIVAL ROUTE DESCRIPTION:

LANDING MIA RWY 8L/R: FROM BNFSH ON TRACK 196.66/11.30 TO CROSS FENDE AT OR ABOVE 11000, THEN ON TRACK 198.22/9.01 TO GUCCI, THEN ON TRACK 233.06/3.89 TO BLYMY, THEN ON TRACK 273.72/2.00 TO CROSS RMANI AT OR ABOVE 8000, THEN ON TRACK 273.00/5.29 TO CROSS MDONA AT OR ABOVE 6000, THEN ON TRACK 272.96/5.31 TO CROSS TUPAC AT 5000, THEN ON TRACK 272.96. EXPECT RADAR VECTORS TO FINAL APPROACH COURSE.

LANDING MIA RWY 9: FROM BNFSH ON TRACK 196.66/11.30 TO CROSS FENDE AT OR ABOVE 11000, THEN ON TRACK 198.22/9.01 TO GUCCI, THEN ON TRACK 212.62/13.34 TO CROSS PRCHE AT OR ABOVE 8000, THEN ON TRACK 262.09/3.35 TO CROSS DAHLA AT OR ABOVE 6000, THEN ON TRACK 272.03/8.70 TO CROSS BILZZ AT 5000, THEN ON TRACK 272.03. EXPECT RADAR VECTORS TO FINAL APPROACH COURSE.

LANDING MIA RWY 12: FROM BNFSH ON TRACK 196.66/11.30 TO CROSS FENDE AT OR ABOVE 11000, THEN ON TRACK 198.22/9.01 TO GUCCI, THEN ON TRACK 233.06/3.89 TO BLYMY, THEN ON TRACK 273.72/2.00 TO CROSS RMANI AT OR ABOVE 8000, THEN ON TRACK 273.00/5.29 TO CROSS MDONA AT OR ABOVE 6000, THEN ON TRACK 303.32/7.85 TO CROSS KPONE AT 4000, THEN ON TRACK 274.00/3.00 TO CROSS CHUUM AT 4000, THEN ON TRACK 274.00. EXPECT RADAR VECTORS TO FINAL APPROACH COURSE.

LANDING MIA RWY 26L/R, 27, 30: FROM BNFSH ON TRACK 185.03/2.48 TO CROSS OTION AT 11000 AND AT 230 KIAS, THEN ON TRACK 180.88/2.67 TO CROSS BONHD AT OR ABOVE 9000, THEN ON TRACK 180.88/4.86 TO CROSS GDDAY BETWEEN 8000 AND 9000, THEN ON TRACK 180.88/11.50 TO CROSS RHODZ AT 6000 AND AT 210 KIAS. EXPECT ASSIGNED INSTRUMENT APPROACH TO RWY 26L/R OR RADAR VECTORS TO FINAL APPROACH COURSE FOR RWYS 27, 30.

LANDING 07FA/X51/HST/TMB: FROM BNFSH ON TRACK 196.66/2.60 TO CROSS KEYZZ AT OR ABOVE 11000, THEN ON TRACK 196.66/8.26 TO CROSS CARMA BETWEEN 9000 AND 10000, THEN ON TRACK 197.27/11.23 TO CROSS YARTO AT 8000, THEN ON HEADING 180.00. EXPECT RADAR VECTORS TO FINAL APPROACH COURSE.

PBN REQUIREMENT NOTES:

RNAV 1 - DME/DME/IRU OR GPS
 SNAGY, FIROL, SUMRS, MORME TRANSITIONS: GPS

EQUIPMENT REQUIREMENT NOTES:

RADAR REQUIRED

PROCEDURAL DATA NOTES:

- NOTE: JET AIRCRAFT ONLY, EXCLUDING EA50, E50P, SF50, C510, C525 AIRCRAFT, WHICH SHOULD FILE TARNP RNAV STAR.
- NOTE: LANDING EAST USE RWY 12 TRANSITION, LANDING WEST USE RWY 26R TRANSITION. EXPECT RWY ASSIGNMENT FROM MIA APPROACH PRIOR TO BNFSH.
- NOTE: DO NOT FILE FIROL, GELDE, OR MOGAE TRANSITIONS - TO BE ASSIGNED BY ATC.
- NOTE: MUNRO TRANSITION FOR GRAND BAHAMA DEPARTURES ONLY.
- NOTE: REPEE TRANSITION FOR ABACO DEPARTURES ONLY.

FIXES AND/OR HOLDING PATTERNS:

- CHART HOLDING AT CIKEN: HOLD NE, LT, 203.13 INBOUND, 10 NM LEGS.
- CHART HOLDING AT ENRGY: HOLD N, RT, 202.49 INBOUND, 10 NM LEGS.
- CHART HOLDING AT FRATS: HOLD N, RT, 182.00 INBOUND, 10 NM LEGS.
- CHART HOLDING AT HEATN: HOLD NE, RT, 220.48 INBOUND, 10 NM LEGS.
- CHART HOLDING AT JITIL: HOLD E, RT, 272.26 INBOUND, 10 NM LEGS.
- CHART HOLDING AT JORAY: HOLD N, RT, 191.73 INBOUND, 10 NM LEGS.
- CHART HOLDING AT MOGAE: HOLD NE, LT, 203.31 INBOUND, 10 NM LEGS.
- CHART HOLDING AT MUNRO: HOLD E, RT, 271.85 INBOUND, 10 NM LEGS.
- CHART HOLDING AT STIXX: HOLD N, LT, 183.00 INBOUND, 10 NM LEGS.

COMMUNICATIONS:



FEDERAL AVIATION ADMINISTRATION
 FLIGHT STANDARDS SERVICE
 STANDARD TERMINAL ARRIVAL (STAR)

Bearings, headings, courses, tracks and radials are magnetic. Elevations and altitudes are in feet, MSL. Altitudes are minimum altitudes unless otherwise indicated. Ceilings are in feet above airport elevation. Distances are in nautical miles. Visibilities are in statute miles or feet RVR unless otherwise indicated.

Arrival Name	Number	STAR Computer Code	Superseded Number	Dated	Effective Date
BNFSH (RNAV)	THREE	BNFSH.BNFSH3	TWO	11/03/2022	

AIRPORTS SERVED:

<u>AIRPORT ID</u>	<u>CITY</u>	<u>STATE</u>
MIA	MIAMI	FL
HST	HOMESTEAD	FL
TMB	MIAMI	FL
X51	HOMESTEAD	FL
07FA	KEY LARGO	FL

LOST COMMUNICATIONS PREFERENCES:

REMARKS:

THE ENVIRONMENTAL REVIEW UNDER ORDER 1050.1 (LATEST EDITION) AND THE NOISE SCREENING HAVE BEEN ACCOMPLISHED.
 SHIP HEIGHT 295 FT.

ADDITIONAL FLIGHT DATA:

DME/DME ASSESSMENT: SAT (RNP 2.0)
 MAG VAR: MIA 05W/2000
 CHART AT RHODZ TERMINUS: MIA LDG RWY 26L/R, 27, 30
 CHART AT CHUUM TERMINUS: MIA LDG RWY 12
 CHART AT TUPAC TERMINUS: MIA LDG RWY 8L/R
 CHART AT BILZZ TERMINUS: MIA LDG RWY 9
 CHART AT YARTO TERMINUS: LDG 07FA/HST/TMB/X51

FLIGHT INSPECTED BY:

JAMES R JONES

ORGANIZATION:

AJF

DATE:

01/27/2025

Flight Inspected Signature: _____

Digitally signed by
ROBERT G HAMILTON

Jan 30, 2025

DEVELOPED BY:

WESTLEY OWENS

AJV-A431

10/13/2024

Developed By Signature: _____

Digitally signed by
ROBERT G HAMILTON

Jan 30, 2025

APPROVED BY:

ERIC SUSKI

AJV-A431

Approved By Signature: _____

Digitally signed by
ROBERT G HAMILTON

Jan 30, 2025

CHANGES:

1. ADDED STAND-ALONE HOLDING PATTERN AT STIXX, HOLD N, LT, 183.00 INBOUND, 10 NM LEGS.
2. ADDED STAND-ALONE HOLDING PATTERN AT FRATS, HOLD N, RT, 182.00 INBOUND, 10 NM LEGS.
3. REVISED EXPECT LANDING WORDING FROM "EXPECT ILS OR LOC RWY 26L.RWY 26R, OR RADAR VECTORS RWY 27,RWY 30 APPROACH" TO "EXPECT ASSIGNED INSTRUMENT APPROACH TO RWY 26L/R OR RADAR VECTORS TO FINAL APPROACH COURSE FOR RWYS 27, 30."
4. REMOVED "K" FROM AIRPORT IDENTS ALL LOCATIONS.



FEDERAL AVIATION ADMINISTRATION
FLIGHT STANDARDS SERVICE
STANDARD TERMINAL ARRIVAL (STAR)

Bearings, headings, courses, tracks and radials are magnetic. Elevations and altitudes are in feet, MSL. Altitudes are minimum altitudes unless otherwise indicated.
Ceilings are in feet above airport elevation. Distances are in nautical miles. Visibilities are in statute miles or feet RVR unless otherwise indicated.

Arrival Name	Number	STAR Computer Code	Superseded Number	Dated	Effective Date
BNFSH (RNAV)	THREE	BNFSH.BNFSH3	TWO	11/03/2022	

REASONS:

1. ATC REQUEST.
2. ATC REQUEST.
3. CHANGED TO LET THE PILOT KNOW THEY MAY BE VECTORED BY AIR TRAFFIC TO A MORE DESIREABLE RWY AT THE TIME.
4. REMOVED IN ACCORDANCE WITH 8260.19J.

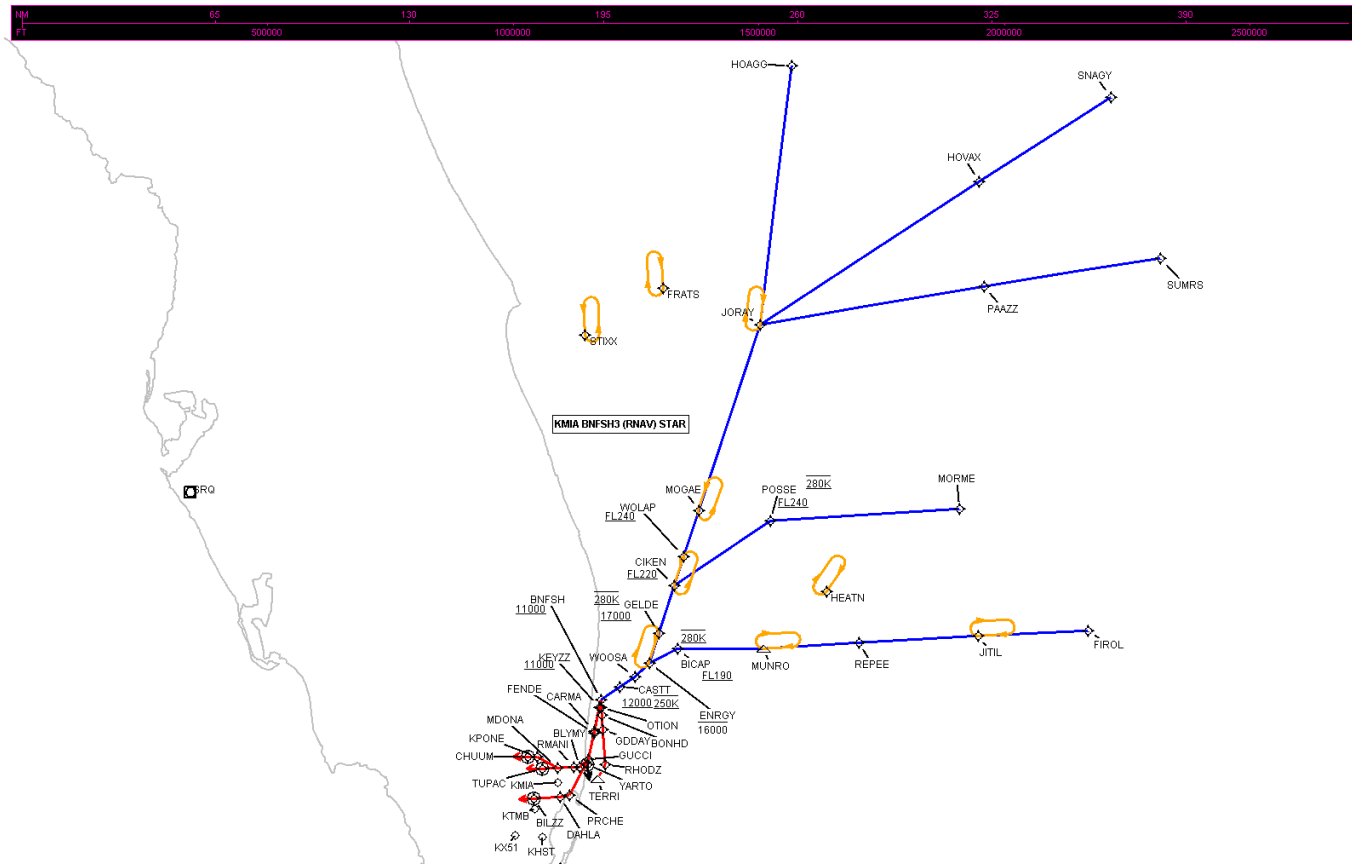


FEDERAL AVIATION ADMINISTRATION
 FLIGHT STANDARDS SERVICE
 STANDARD TERMINAL ARRIVAL (STAR)

Bearings, headings, courses, tracks and radials are magnetic. Elevations and altitudes are in feet, MSL. Altitudes are minimum altitudes unless otherwise indicated.
 Ceilings are in feet above airport elevation. Distances are in nautical miles. Visibilities are in statute miles or feet RVR unless otherwise indicated.

Arrival Name	Number	STAR Computer Code	Superseded Number	Dated	Effective Date
BNFSH (RNAV)	THREE	BNFSH.BNFSH3	TWO	11/03/2022	

Graphic Depiction 1

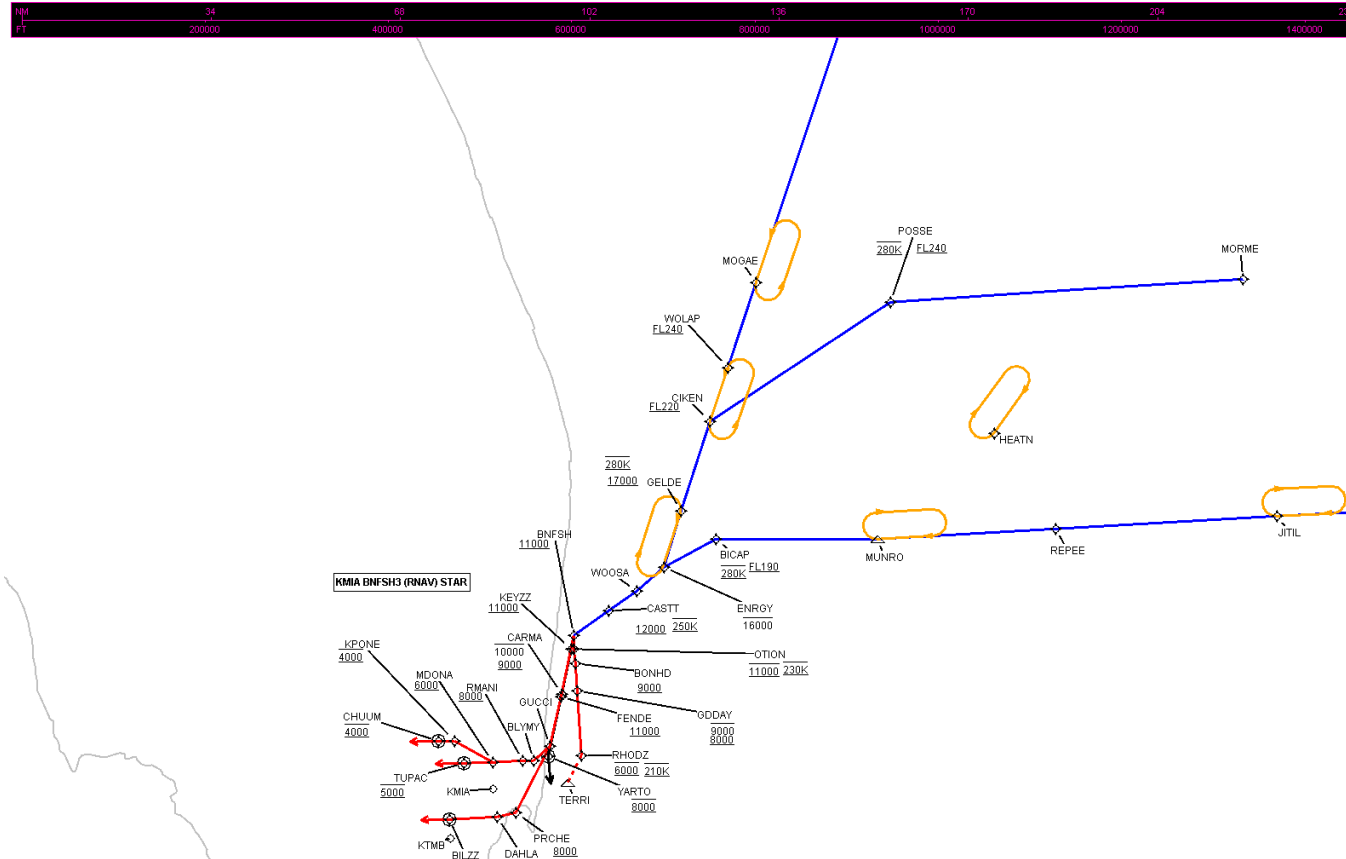


FEDERAL AVIATION ADMINISTRATION
 FLIGHT STANDARDS SERVICE
 STANDARD TERMINAL ARRIVAL (STAR)

Bearings, headings, courses, tracks and radials are magnetic. Elevations and altitudes are in feet, MSL. Altitudes are minimum altitudes unless otherwise indicated.
 Ceilings are in feet above airport elevation. Distances are in nautical miles. Visibilities are in statute miles or feet RVR unless otherwise indicated.

Arrival Name	Number	STAR Computer Code	Superseded Number	Dated	Effective Date
BNFSH (RNAV)	THREE	BNFSH.BNFSH3	TWO	11/03/2022	

Graphic Depiction 2



FEDERAL AVIATION ADMINISTRATION
 FLIGHT STANDARDS SERVICE
 STAR (DATA RECORD)

Arrival Name BNFSH (RNAV)	Number THREE	STAR Computer Code BNFSH.BNFSH3		Superseded Number TWO		Dated 11/03/2022	Effective Date		
FIX/NAVAID	LAT/LONG	C	FO/FB	LEG TYPE	TC	DIST (NM)	ALTITUDE	SPEED	REMARKS
En Route Transition									
FIROL	263825.67N / 0770032.25W	Y		IF					FIROL.BNFSH3
JITIL	263634.36N / 0774122.72W	Y	FB	TF	267.26	36.65			
REPEE	263413.57N / 0782528.85W	Y	FB	TF	266.78	39.60			
MUNRO	263224.05N / 0790049.74W	Y	FB	TF	266.85	31.75			
BICAP	263223.17N / 0793259.72W	Y	FB	TF	270.09	28.85	AT/ABOVE FL190	AT 280K	
ENRGY	262728.63N / 0794328.31W	Y	FB	TF	242.53	10.60	AT/BELOW 16000		
WOOSA	262304.58N / 0794849.42W	Y	FB	TF	227.62	06.51			
CASTT	261933.17N / 0795427.53W	Y	FB	TF	235.26	06.16	AT/ABOVE 12000	AT 250K	
BNFSH	261515.83N / 0800118.14W	Y	FB	TF	235.22	07.49	AT/ABOVE 11000		
En Route Transition									
GELDE	263732.77N / 0793956.82W	Y		IF			AT/ABOVE 17000	AT 280K	GELDE.BNFSH3
ENRGY	262728.63N / 0794328.31W	Y	FB	TF	197.49	10.53	AT/BELOW 16000		
WOOSA	262304.58N / 0794849.42W	Y	FB	TF	227.62	06.51			
CASTT	261933.17N / 0795427.53W	Y	FB	TF	235.26	06.16	AT/ABOVE 12000	AT 250K	
BNFSH	261515.83N / 0800118.14W	Y	FB	TF	235.22	07.49	AT/ABOVE 11000		
En Route Transition									
HOAGG	294703.71N / 0785033.85W	Y		IF					HOAGG.BNFSH3
JORAY	282034.13N / 0790205.88W	Y	FB	TF	186.73	86.86			
MOGAE	271824.19N / 0792506.53W	Y	FB	TF	198.31	65.27			
WOLAP	270302.95N / 0793043.31W	Y	FB	TF	198.13	16.11	AT/ABOVE FL240		
CIKEN	265330.91N / 0793411.62W	Y	FB	TF	198.08	10.00	AT/ABOVE FL220		
GELDE	263732.77N / 0793956.82W	Y	FB	TF	197.94	16.74	AT/ABOVE 17000	AT 280K	
ENRGY	262728.63N / 0794328.31W	Y	FB	TF	197.49	10.53	AT/BELOW 16000		
WOOSA	262304.58N / 0794849.42W	Y	FB	TF	227.62	06.51			
CASTT	261933.17N / 0795427.53W	Y	FB	TF	235.26	06.16	AT/ABOVE 12000	AT 250K	
BNFSH	261515.83N / 0800118.14W	Y	FB	TF	235.22	07.49	AT/ABOVE 11000		



FEDERAL AVIATION ADMINISTRATION
 FLIGHT STANDARDS SERVICE
 STAR (DATA RECORD)

Arrival Name BNFSH (RNAV)	Number THREE	STAR Computer Code BNFSH.BNFSH3		Superseded Number TWO		Dated 11/03/2022	Effective Date		
FIX/NAVAID	LAT/LONG	C	FO/FB	LEG TYPE	TC	DIST (NM)	ALTITUDE	SPEED	REMARKS
En Route Transition									
MOGAE	271824.19N / 0792506.53W	Y		IF					MOGAE.BNFSH3
WOLAP	270302.95N / 0793043.31W	Y	FB	TF	198.13	16.11	AT/ABOVE FL240		
CIKEN	265330.91N / 0793411.62W	Y	FB	TF	198.08	10.00	AT/ABOVE FL220		
GELDE	263732.77N / 0793956.82W	Y	FB	TF	197.94	16.74	AT/ABOVE 17000	AT 280K	
ENRGY	262728.63N / 0794328.31W	Y	FB	TF	197.49	10.53	AT/BELOW 16000		
WOOSA	262304.58N / 0794849.42W	Y	FB	TF	227.62	06.51			
CASTT	261933.17N / 0795427.53W	Y	FB	TF	235.26	06.16	AT/ABOVE 12000	AT 250K	
BNFSH	261515.83N / 0800118.14W	Y	FB	TF	235.22	07.49	AT/ABOVE 11000		
En Route Transition									
MORME	271859.95N / 0774805.75W	Y		IF					MORME.BNFSH3
POSSE	271456.27N / 0785821.44W	Y	FB	TF	266.57	62.73	AT/ABOVE FL240	AT 280K	
CIKEN	265330.91N / 0793411.62W	Y	FB	TF	236.40	38.47	AT/ABOVE FL220		
GELDE	263732.77N / 0793956.82W	Y	FB	TF	197.94	16.74	AT/ABOVE 17000	AT 280K	
ENRGY	262728.63N / 0794328.31W	Y	FB	TF	197.49	10.53	AT/BELOW 16000		
WOOSA	262304.58N / 0794849.42W	Y	FB	TF	227.62	06.51			
CASTT	261933.17N / 0795427.53W	Y	FB	TF	235.26	06.16	AT/ABOVE 12000	AT 250K	
BNFSH	261515.83N / 0800118.14W	Y	FB	TF	235.22	07.49	AT/ABOVE 11000		
En Route Transition									
MUNRO	263224.05N / 0790049.74W	Y		IF					MUNRO.BNFSH3
BICAP	263223.17N / 0793259.72W	Y	FB	TF	270.09	28.85	AT/ABOVE FL190	AT 280K	
ENRGY	262728.63N / 0794328.31W	Y	FB	TF	242.53	10.60	AT/BELOW 16000		
WOOSA	262304.58N / 0794849.42W	Y	FB	TF	227.62	06.51			
CASTT	261933.17N / 0795427.53W	Y	FB	TF	235.26	06.16	AT/ABOVE 12000	AT 250K	
BNFSH	261515.83N / 0800118.14W	Y	FB	TF	235.22	07.49	AT/ABOVE 11000		
En Route Transition									
REPEE	263413.57N / 0782528.85W	Y		IF					REPEE.BNFSH3



FEDERAL AVIATION ADMINISTRATION
 FLIGHT STANDARDS SERVICE
 STAR (DATA RECORD)

Arrival Name BNFSH (RNAV)	Number THREE	STAR Computer Code BNFSH.BNFSH3		Superseded Number TWO		Dated 11/03/2022	Effective Date		
FIX/NAVAID	LAT/LONG	C	FO/FB	LEG TYPE	TC	DIST (NM)	ALTITUDE	SPEED	REMARKS
MUNRO	263224.05N / 0790049.74W	Y	FB	TF	266.85	31.75			
BICAP	263223.17N / 0793259.72W	Y	FB	TF	270.09	28.85	AT/ABOVE FL190	AT 280K	
ENRGY	262728.63N / 0794328.31W	Y	FB	TF	242.53	10.60	AT/BELOW 16000		
WOOSA	262304.58N / 0794849.42W	Y	FB	TF	227.62	06.51			
CASTT	261933.17N / 0795427.53W	Y	FB	TF	235.26	06.16	AT/ABOVE 12000	AT 250K	
BNFSH	261515.83N / 0800118.14W	Y	FB	TF	235.22	07.49	AT/ABOVE 11000		
En Route Transition									
SNAGY	293626.39N / 0765151.38W	Y		IF					SNAGY.BNFSH3
HOVAX	290814.90N / 0774102.95W	Y	FB	TF	237.01	51.36			
JORAY	282034.13N / 0790205.88W	Y	FB	TF	236.60	85.66			
MOGAE	271824.19N / 0792506.53W	Y	FB	TF	198.31	65.27			
WOLAP	270302.95N / 0793043.31W	Y	FB	TF	198.13	16.11	AT/ABOVE FL240		
CIKEN	265330.91N / 0793411.62W	Y	FB	TF	198.08	10.00	AT/ABOVE FL220		
GELDE	263732.77N / 0793956.82W	Y	FB	TF	197.94	16.74	AT/ABOVE 17000	AT 280K	
ENRGY	262728.63N / 0794328.31W	Y	FB	TF	197.49	10.53	AT/BELOW 16000		
WOOSA	262304.58N / 0794849.42W	Y	FB	TF	227.62	06.51			
CASTT	261933.17N / 0795427.53W	Y	FB	TF	235.26	06.16	AT/ABOVE 12000	AT 250K	
BNFSH	261515.83N / 0800118.14W	Y	FB	TF	235.22	07.49	AT/ABOVE 11000		
En Route Transition									
SUMRS	284242.08N / 0763330.59W	Y		IF					SUMRS.BNFSH3
PAAZZ	283316.67N / 0773908.77W	Y	FB	TF	261.02	58.52			
JORAY	282034.13N / 0790205.88W	Y	FB	TF	260.50	74.21			
MOGAE	271824.19N / 0792506.53W	Y	FB	TF	198.31	65.27			
WOLAP	270302.95N / 0793043.31W	Y	FB	TF	198.13	16.11	AT/ABOVE FL240		
CIKEN	265330.91N / 0793411.62W	Y	FB	TF	198.08	10.00	AT/ABOVE FL220		
GELDE	263732.77N / 0793956.82W	Y	FB	TF	197.94	16.74	AT/ABOVE 17000	AT 280K	
ENRGY	262728.63N / 0794328.31W	Y	FB	TF	197.49	10.53	AT/BELOW 16000		
WOOSA	262304.58N / 0794849.42W	Y	FB	TF	227.62	06.51			



FEDERAL AVIATION ADMINISTRATION
 FLIGHT STANDARDS SERVICE
 STAR (DATA RECORD)

Arrival Name BNFSH (RNAV)	Number THREE	STAR Computer Code BNFSH.BNFSH3		Superseded Number TWO		Dated 11/03/2022	Effective Date		
FIX/NAVAID	LAT/LONG	C	FO/FB	LEG TYPE	TC	DIST (NM)	ALTITUDE	SPEED	REMARKS
CASST	261933.17N / 0795427.53W	Y	FB	TF	235.26	06.16	AT/ABOVE 12000	AT 250K	
BNFSH	261515.83N / 0800118.14W	Y	FB	TF	235.22	07.49	AT/ABOVE 11000		
Common Route									
BNFSH	261515.83N / 0800118.14W	Y		IF			AT/ABOVE 11000		BNFSH.BNFSH3
KEYZZ	261242.82N / 0800153.15W	Y	FB	TF	191.66	02.60	AT/ABOVE 11000		
CARMA	260436.00N / 0800344.35W	Y	FB	TF	191.66	08.26	9000B10000		
YARTO	255335.31N / 0800623.17W	Y	FO	TF	192.27	11.23	AT 8000		
K07FA,KHST,KTMB, KX51				VM	175.00				
Runway Transition									
BNFSH	261515.83N / 0800118.14W	Y		IF			AT/ABOVE 11000		
FENDE	260409.90N / 0800350.31W	Y	FB	TF	191.66	11.30	AT/ABOVE 11000		
GUCCI	255521.91N / 0800607.46W	Y	FB	TF	193.22	09.01			
BLYMY	255245.48N / 0800919.87W	Y	FB	TF	228.06	03.89			
RMANI	255242.77N / 0801132.89W	Y	FB	TF	268.72	02.00	AT/ABOVE 8000		
MDONA	255231.54N / 0801724.91W	Y	FB	TF	268.00	05.29	AT/ABOVE 6000		
TUPAC	255220.04N / 0802317.78W	Y	FO	TF	267.96	05.31	AT 5000		
KMIA:RWY 8L,RWY 8R				FM	267.96				
Runway Transition									
BNFSH	261515.83N / 0800118.14W	Y		IF			AT/ABOVE 11000		
FENDE	260409.90N / 0800350.31W	Y	FB	TF	191.66	11.30	AT/ABOVE 11000		
GUCCI	255521.91N / 0800607.46W	Y	FB	TF	193.22	09.01			
PRCHE	254330.35N / 0801258.32W	Y	FB	TF	207.62	13.34	AT/ABOVE 8000		
DAHLA	254245.22N / 0801635.46W	Y	FB	TF	257.09	03.35	AT/ABOVE 6000		
BILZZ	254217.82N / 0802612.49W	Y	FO	TF	267.03	08.70	AT 5000		
KMIA:RWY 9				FM	267.03				



FEDERAL AVIATION ADMINISTRATION
 FLIGHT STANDARDS SERVICE
 STAR (DATA RECORD)

Arrival Name BNFSH (RNAV)	Number THREE	STAR Computer Code BNFSH.BNFSH3	Superseded Number TWO	Dated 11/03/2022	Effective Date
------------------------------	-----------------	------------------------------------	--------------------------	---------------------	----------------

<u>FIX/NAVAID</u>	<u>LAT/LONG</u>	<u>C</u>	<u>FO/FB</u>	<u>LEG TYPE</u>	<u>TC</u>	<u>DIST (NM)</u>	<u>ALTITUDE</u>	<u>SPEED</u>	<u>REMARKS</u>
Runway Transition									
BNFSH	261515.83N / 0800118.14W	Y		IF			AT/ABOVE 11000		
FENDE	260409.90N / 0800350.31W	Y	FB	TF	191.66	11.30	AT/ABOVE 11000		
GUCCI	255521.91N / 0800607.46W	Y	FB	TF	193.22	09.01			
BLYMY	255245.48N / 0800919.87W	Y	FB	TF	228.06	03.89			
RMANI	255242.77N / 0801132.89W	Y	FB	TF	268.72	02.00	AT/ABOVE 8000		
MDONA	255231.54N / 0801724.91W	Y	FB	TF	268.00	05.29	AT/ABOVE 6000		
KPONE	255615.61N / 0802505.11W	Y	FB	TF	298.32	07.85	AT 4000		
CHUUM	255612.42N / 0802824.75W	Y	FO	TF	269.00	03.00	AT 4000		
KMIA:RWY 12				FM	269.00				

Runway Transition									
BNFSH	261515.83N / 0800118.14W	Y		IF			AT/ABOVE 11000		
OTION	261246.72N / 0800118.23W	Y	FB	TF	180.03	02.48	AT 11000	AT 230K	
BONHD	261006.29N / 0800105.41W	Y	FB	TF	175.88	02.67	AT/ABOVE 9000		
GDDAY	260514.47N / 0800042.12W	Y	FB	TF	175.88	04.86	8000B9000		
RHODZ	255344.46N / 0795947.18W	Y	FB	TF	175.88	11.50	AT 6000	AT 210K	
KMIA:RWY 26L,RWY 26R,RWY 27,RWY 30									

