



**To:** Flight Procedures & Airspace Group (AFS-420)

**From:** Alec Seybold – Flight Tech Engineering

**Date:** 11/06/2025

Yellowstone Regional Airport (KCOD) Cody, WY NICQE ONE RNAV, is submitted for processing and submission to [AMC-AJV-IFP-ProdCoordTeam@faa.gov](mailto:AMC-AJV-IFP-ProdCoordTeam@faa.gov) and [9-AMC-AJW-TL@faa.gov](mailto:9-AMC-AJW-TL@faa.gov) for publication.

Request publication in the **MARCH 19<sup>th</sup>, 2026 (Cycle 2603)** Terminal Procedures Publication.

Sincerely,  
Alec Seybold  
Chief Designer  
Flight Tech Engineering  
Mobile: 720-465-6170  
[aseybold@flight-tech.aero](mailto:aseybold@flight-tech.aero)

Enclosures:

WY\_KCOD\_SID\_NICQE\_ONE\_RNAV\_ORIG\_F  
WY\_KCOD\_SID\_NICQE\_ONE\_RNAV\_ORIG\_S  
WY\_KCOD\_SID\_NICQE\_ONE\_RNAV\_ORIG\_8260-2  
WY\_KCOD\_SID\_NICQE\_ONE\_RNAV\_ORIG\_8260-2\_Non-NFDC  
ARI CODING FILE

**FEDERAL AVIATION ADMINISTRATION  
FLIGHT STANDARDS SERVICE  
FLIGHT VALIDATION CHECKLIST**

1. DATE	Oct 8, 2025	2. ORGANIZATION	Flight Tech Engineering		
3. AIRPORT	KCOD	4. PROCEDURE	RNAV (GPS) Z/Y Rwy 04 NICQE ONE Departure	5. AMEND #	ORIG
6. AIRCRAFT TYPE	C-182	7. FMS / SOFTWARE	GARMIN GTN 650XI /20.31		
8. PIC NAME / PHONE	NATHAN KURTH /970-401-2543		9. EVALUATOR NAME / PHONE	NATHAN KURTH /970-401-2543	

**FLIGHT VALIDATION TASKS**

10. FMS NAV DATA AND SOURCE COMPARISON SAT	YES	43. SIMULATOR AND OBSTACLE NOTES REVIEWED	YES
11. IAP ASSESSED TO DA / MDA	NA	44. AIR / GROUND COMMUNICATIONS SATISFACTORY	YES
12. DP / MISSED APPROACH ASSESSED AT MINIMUM CLIMB GRADIENTS	YES	45. RADAR COVERAGE ADEQUATE	YES
15. FLYABILITY SATISFACTORY	YES	46. ADEQUATE NAVIGATION PERFORMANCE ACHIEVED	YES
33. EQUIPMENT ACCURACY VERIFIED	YES	47. RUNWAY MARKINGS / FEATURES VERIFIED	YES
35. DOCUMENTED CONTROLLING OBSTACLE MOST ADVERSE	YES	48. FAS DATA BLOCK SATISFACTORY	NA

**CHARTING CHECKLIST**

16. CHART DETAIL SATISFACTORY	YES	20. TEMPERATURE LIMIT NOTED	NA
17. RNP < 1.0 IN MISSED APPROACH NOTED	NA	21. AIRCRAFT SIZE NOTED	NA
18. NON-STANDARD SPEED / CLIMB NOTED	YES	22. CHART MATCHES FLIGHT TRACK	YES
19. RF LEGS NOTED	NA		

**IAP SEGMENT CHECKS**

+			
-			
TRANS	NA		
24. COURSES		25. DISTANCES	
		27. TAWS	
28. CONSTRAINTS MET		29. WIND COMP	
		30. RF BANK ANGLE	

**FEDERAL AVIATION ADMINISTRATION  
FLIGHT STANDARDS SERVICE  
FLIGHT VALIDATION CHECKLIST**

**FINAL**

24. COURSES  25. DISTANCES  26. FPA  27. TAWS   
 28. CONSTRAINTS MET  29. WIND COMP  30. RF BANK ANGLE

**MISSED APPROACH**

24. COURSES  25. DISTANCES  27. TAWS   
 28. CONSTRAINTS MET  29. WIND COMP  30. RF BANK ANGLE

**HOLDING**

24. COURSES  25. DISTANCES  27. TAWS   
 28. CONSTRAINTS MET  29. WIND COMP  30. RF BANK ANGLE

49. VISUAL SEGMENT  50. NIGHT EVALUATION

**STAR SEGMENT CHECKS**

**EN ROUTE TRANS**   
 24. COURSES  25. DISTANCES  27. TAWS   
 28. CONSTRAINTS MET  29. WIND COMP  30. RF BANK ANGLE

**COMMON ROUTE**

24. COURSES  25. DISTANCES  27. TAWS   
 28. CONSTRAINTS MET  29. WIND COMP  30. RF BANK ANGLE

**RWY TRANS**   
 24. COURSES  25. DISTANCES  27. TAWS   
 28. CONSTRAINTS MET  29. WIND COMP  30. RF BANK ANGLE

**DEPARTURE SEGMENT CHECKS**

**ICA OR COPTER PROCEED VISUALLY**

24. COURSES  25. DISTANCES  27. TAWS   
 28. CONSTRAINTS MET  29. WIND COMP  30. RF BANK ANGLE

**FEDERAL AVIATION ADMINISTRATION  
FLIGHT STANDARDS SERVICE  
FLIGHT VALIDATION CHECKLIST**

+					
-					
<b>RWY TRANS</b>	<b>RWY 04</b>				
24. COURSES	P	25. DISTANCES	P	27. TAWS	P
28. CONSTRAINTS MET	YES	29. WIND COMP	CALM	30. RF BANK ANGLE	NA

+					
-					
<b>RWY TRANS</b>	<b>RWY 22</b>				
24. COURSES	P	25. DISTANCES	P	27. TAWS	P
28. CONSTRAINTS MET	YES	29. WIND COMP	260/06	30. RF BANK ANGLE	NA

<b>COMMON ROUTE</b>					
24. COURSES	P	25. DISTANCES	P	27. TAWS	P
28. CONSTRAINTS MET	YES	29. WIND COMP	200/10	30. RF BANK ANGLE	NA

+					
-					
<b>TRANS</b>	<b>CRANY</b>				
24. COURSES	P	25. DISTANCES	P	27. TAWS	P
28. CONSTRAINTS MET	YES	29. WIND COMP	200/10	30. RF BANK ANGLE	NA

+					
-					
<b>TRANS</b>	<b>ZURNA</b>				
24. COURSES	F	25. DISTANCES	P	27. TAWS	P
28. CONSTRAINTS MET	YES	29. WIND COMP	310/15	30. RF BANK ANGLE	NA

+					
-					
<b>TRANS</b>	<b>NEEDS</b>				
24. COURSES	P	25. DISTANCES	P	27. TAWS	P
28. CONSTRAINTS MET	YES	29. WIND COMP	210/20	30. RF BANK ANGLE	NA

FEDERAL AVIATION ADMINISTRATION  
FLIGHT STANDARDS SERVICE  
FLIGHT VALIDATION CHECKLIST

**51. EVALUATOR NOTES**

**SPECIAL TRAINING RECOMMENDATION FROM DEVELOPER**

53. PROCEDURE

54. EVALUATOR SIGNATURE  Digitally signed by Nathan Kurth  
Date: 2025.10.13 14:34:57 -06'00'

**FEDERAL AVIATION ADMINISTRATION  
FLIGHT STANDARDS SERVICE  
OBSTACLE ASSESSMENT CHECKLIST**

<b>1. DATE</b> Oct 8, 2025	<b>2. ORGANIZATION</b> Flight Tech Engineering	
<b>3. AIRPORT</b> KCOD	<b>4. PROCEDURE</b> NICQE Departure	<b>5. AMEND #</b> ONE
<b>6. AIRCRAFT TYPE</b> C-182	<b>7. FMS / SOFTWARE</b> GARMIN GTN 650XI /20.31	
<b>8. PIC NAME / PHONE</b> NATHAN KURTH /970-401-2543	<b>9. EVALUATOR NAME / PHONE</b> NATHAN KURTH /970-401-2543	

**TERPS BIENNIAL REVIEW**

<b>31. BIENNIAL</b> NA	<b>32. DATE BIENNIAL COMPLETE</b>	
------------------------	-----------------------------------	--

**OBSTACLE ASSESSMENT TASKS**

<b>33. EQUIPMENT ACCURACY VERIFIED</b>	YES	
--	-----	--

**IAP SEGMENT CHECKS**

<b>TRANS</b> NA		
<b>34. DOCUMENTED CONTROLLING OBSTACLE VERIFIED</b>		<b>35. CONTROLLING OBSTACLE MOST ADVERSE</b>

<b>FINAL</b>		
<b>34. DOCUMENTED CONTROLLING OBSTACLE VERIFIED</b>		<b>35. CONTROLLING OBSTACLE MOST ADVERSE</b>

<b>MISSED APPROACH</b>		
<b>34. DOCUMENTED CONTROLLING OBSTACLE VERIFIED</b>		<b>35. CONTROLLING OBSTACLE MOST ADVERSE</b>

<b>HOLDING</b>		
<b>34. DOCUMENTED CONTROLLING OBSTACLE VERIFIED</b>		<b>35. CONTROLLING OBSTACLE MOST ADVERSE</b>

**IAP VISUAL SEGMENT**

<b>VISUAL SEGMENT OR COPTER PROCEED VISUALLY/VFR AREA</b>		
<b>36. VERIFIED CLEAR</b>	NA	<b>37. APPROPRIATE MITIGATIONS IN PLACE IF NOT CLEAR</b>

**FEDERAL AVIATION ADMINISTRATION  
FLIGHT STANDARDS SERVICE  
OBSTACLE ASSESSMENT CHECKLIST**

**STAR SEGMENT CHECKS**

**EN ROUTE TRANS**

34. DOCUMENTED CONTROLLING OBSTACLE VERIFIED

35. CONTROLLING OBSTACLE MOST ADVERSE

**COMMON ROUTE**

34. DOCUMENTED CONTROLLING OBSTACLE VERIFIED

35. CONTROLLING OBSTACLE MOST ADVERSE

**RWY TRANS**

34. DOCUMENTED CONTROLLING OBSTACLE VERIFIED

35. CONTROLLING OBSTACLE MOST ADVERSE

**DEPARTURE SEGMENT CHECKS**

**ICA OR COPTER PROCEED VISUALLY**

34. DOCUMENTED CONTROLLING OBSTACLE VERIFIED

YES

36. VERIFIED CLEAR

YES

35. CONTROLLING OBSTACLE MOST ADVERSE

YES

37. APPROPRIATE MITIGATIONS IN PLACE IF NOT CLEAR

NA

**RWY TRANS**

34. DOCUMENTED CONTROLLING OBSTACLE VERIFIED

YES

36. VERIFIED CLEAR

YES

35. CONTROLLING OBSTACLE MOST ADVERSE

YES

37. APPROPRIATE MITIGATIONS IN PLACE IF NOT CLEAR

NA

**RWY TRANS**

34. DOCUMENTED CONTROLLING OBSTACLE VERIFIED

YES

36. VERIFIED CLEAR

YES

35. CONTROLLING OBSTACLE MOST ADVERSE

YES

37. APPROPRIATE MITIGATIONS IN PLACE IF NOT CLEAR

NA

**FEDERAL AVIATION ADMINISTRATION  
FLIGHT STANDARDS SERVICE  
OBSTACLE ASSESSMENT CHECKLIST**

**COMMON ROUTE**

34. DOCUMENTED CONTROLLING OBSTACLE VERIFIED

YES

35. CONTROLLING OBSTACLE MOST ADVERSE

YES

**TRANS**

**CRANY**

34. DOCUMENTED CONTROLLING OBSTACLE VERIFIED

YES

35. CONTROLLING OBSTACLE MOST ADVERSE

YES

**TRANS**

**ZURNA**

34. DOCUMENTED CONTROLLING OBSTACLE VERIFIED

YES

35. CONTROLLING OBSTACLE MOST ADVERSE

YES

**TRANS**

**NEEDS**

34. DOCUMENTED CONTROLLING OBSTACLE VERIFIED

YES

35. CONTROLLING OBSTACLE MOST ADVERSE

YES

**OBSTRUCTION DISCREPENCIES**

**38. OBSTACLE IN DATABASE DOES NOT EXIST**

OBSTACLE ID

HEIGHT MSL/AGL

COORDINATES

SUPPORTING DOC

**39. OBSTACLE NOT IN DATABASE**

OBSTACLE ID

HEIGHT MSL/AGL

COORDINATES

SUPPORTING DOC

**40. OBSTACLE DATA INCORRECT**

OBSTACLE ID

HEIGHT MSL/AGL

COORDINATES

SUPPORTING DOC

FEDERAL AVIATION ADMINISTRATION  
FLIGHT STANDARDS SERVICE  
OBSTACLE ASSESSMENT CHECKLIST

**OBSTRUCTION NOTIFICATION**

41. OBSTACLE DATA DISCREPENCIES SENT TO NFDC

42. DATE SENT

**51. EVALUATOR NOTES**

53. PROCEDURE

SAT

54. EVALUATOR SIGNATURE

Nathan Kurth

Digitally signed by Nathan Kurth  
Date: 2025.10.13 14:28:37 -06'00'

# NICQE ONE DEPARTURE (RNAV) (NICQE1.NICQE)

CODY, WYOMING

SALT LAKE CENTER  
127.75  
AWOS-3PT  
135.075  
CTAF  
122.80

**TOP ALTITUDE:**  
Assigned by ATC

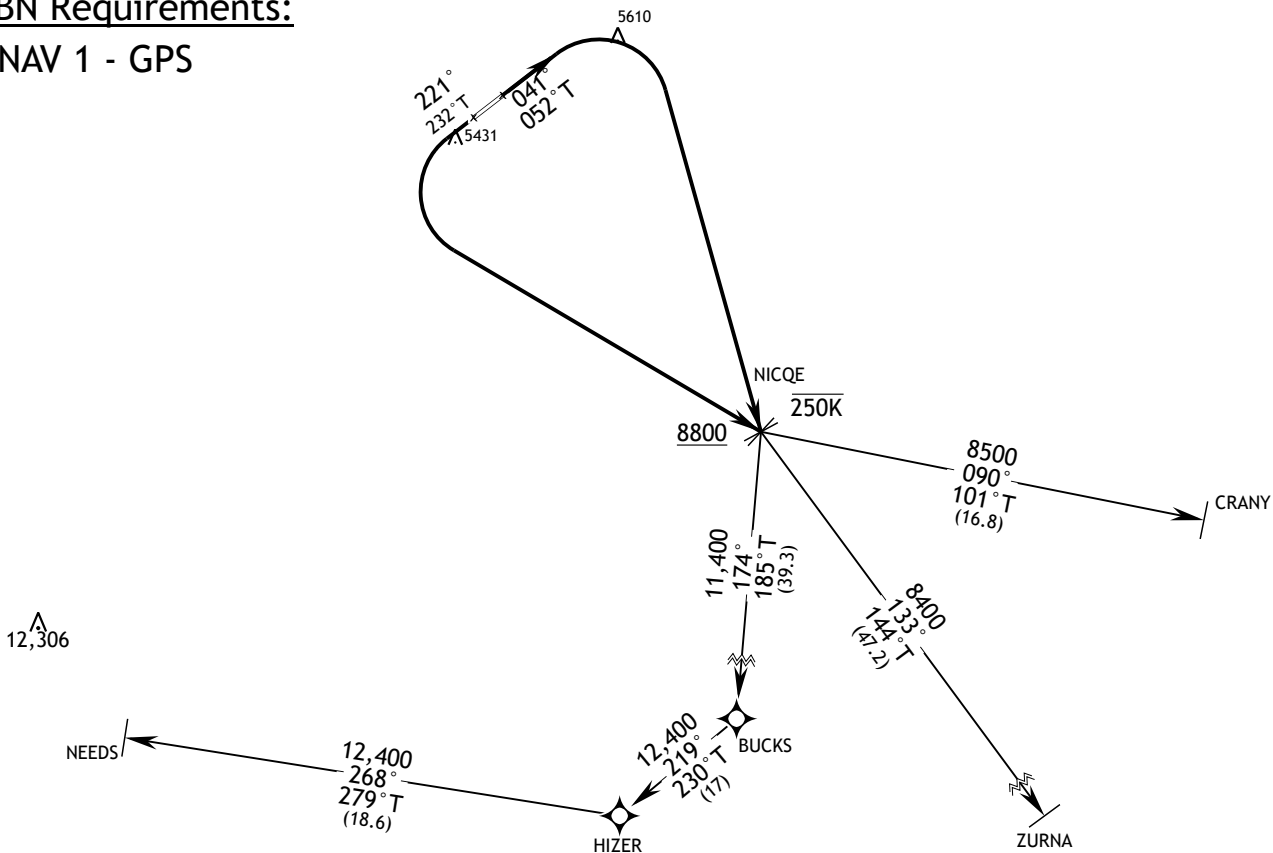
Rwy	Knots	60	90	120	150	180	240	300
RW04 (a)	V/V(fpm)	210	315	420	525	630	840	1050
RW22 (b)	V/V(fpm)	402	603	804	1005	1206	1608	2080

Minimum Climb Rate

- (a) to 6100
- (b) to 6900

## PBN Requirements:

### RNAV 1 - GPS



#### TAKE-OFF MINIMUMS

RWY 22, Standard with minimum climb of 402 ft/NM to 6900 ft.  
RWY 04, Standard with minimum climb of 210 ft/NM to 6100 ft.

#### DEPARTURE ROUTE DESCRIPTION

**TAKEOFF RWY 04:** Climb on heading 041 to 5602, then climbing right turn direct NICQE to cross NICQE at or above 8800 and at or below 250K, thence . . .

**TAKEOFF RWY 22:** Climb on heading 221 to 5602, then climbing left turn direct NICQE to cross NICQE at or above 8800 and at or below 250K, thence . . .

. . . on transition, maintain ATC assigned altitude.

CRANY TRANSITION: (NICQE1.CRANY)

ZURNA TRANSITION: (NICQE1.ZURNA)

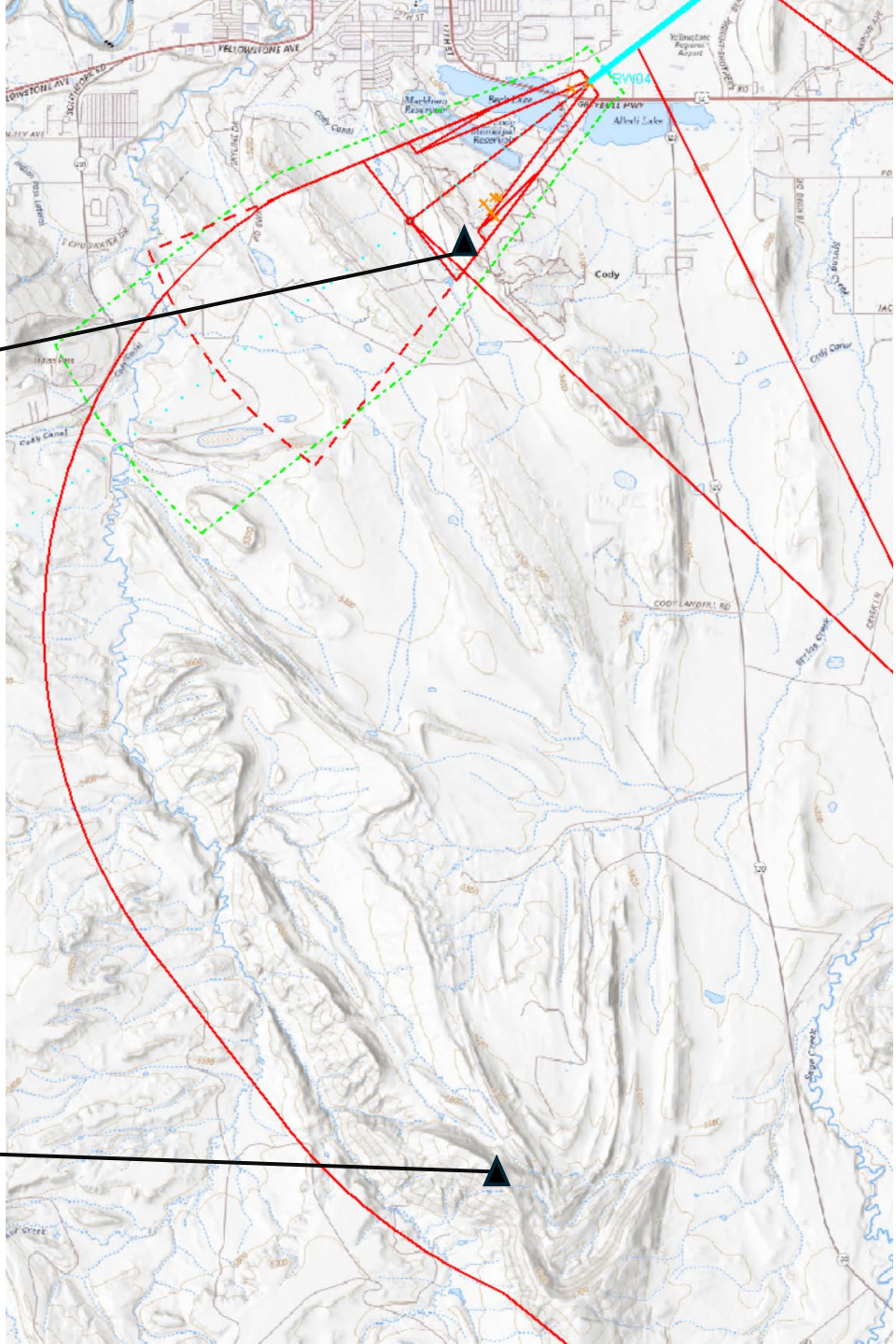
NEEDS TRANSITION: (NICQE1.NEEDS)

# NICQE ONE Departure (RNAV)

- Scale: 1:500,00
- Segment: RW22 ICA

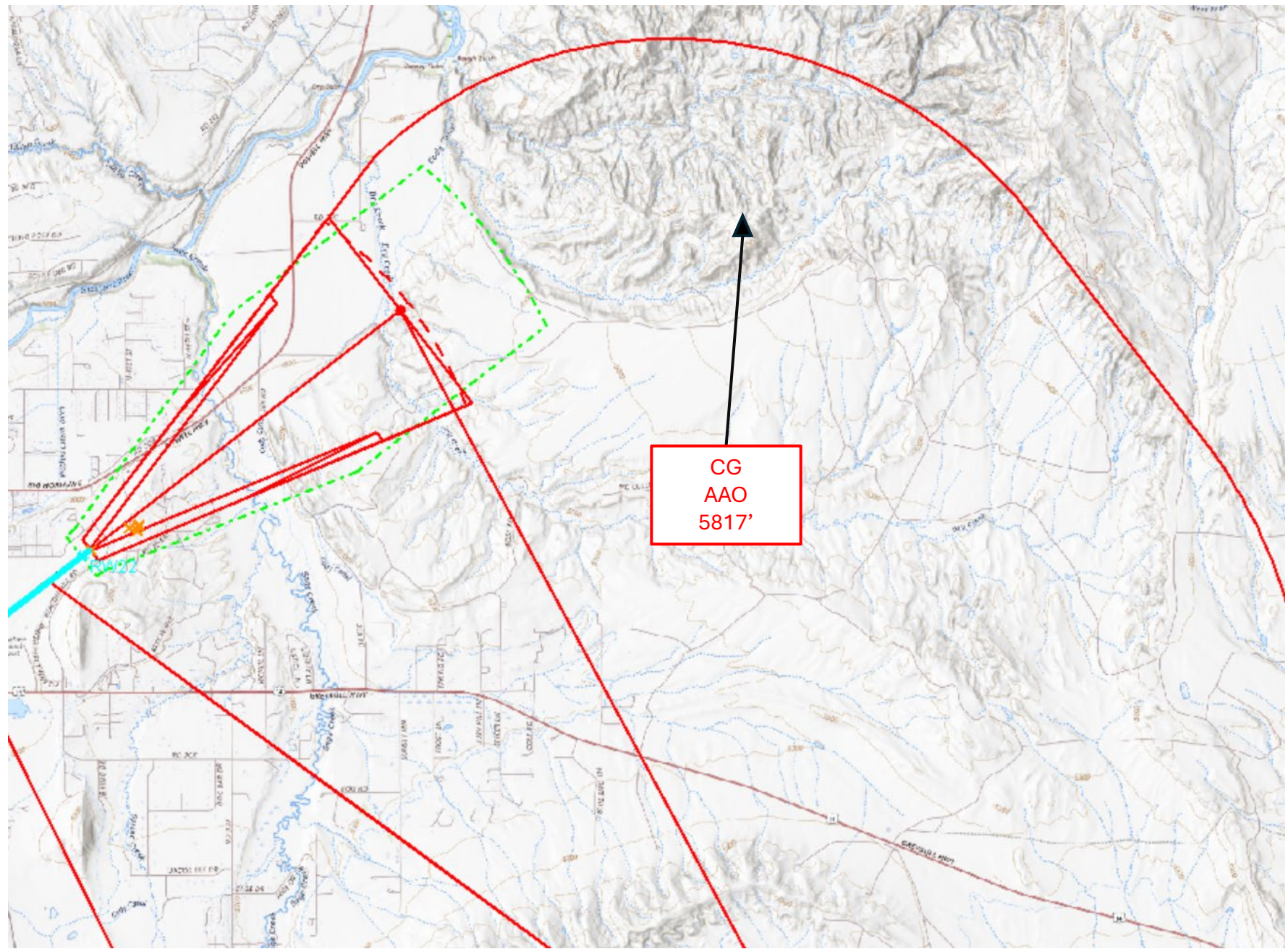
CG  
Terrain  
5431'

CGTA  
AAO  
6424'



# NICQE ONE Departure (RNAV)

- Scale: 1:500,00
- Segment: RW04 ICA



# NICQE ONE Departure (RNAV)

- Scale: 1:500,00
- Segment: MSA, Enroute Transitions

