

Flight Procedures Cover Page	Task Action: P-NOTAM	Task Type: IAP	Estimated Chart Date: 07/09/2026	APWS Task ID: 02EEAEF65B5B49DD99E39EC068AC2D1D	APWS Project ID: D04B11C1549D4C29A3B79B026AC9A518
Procedure: RNAV (GPS) RWY 36 AMDT 1B		Enroute: NO	Specialist: Johnson, Timothy		Agreement Number:
Airport ID: KPIB			Airport City: HATTIESBURG-LAUREL		State: MS
Facility ID:	Facility Type:	Flight Inspection Remark Type:			

Procedure Comments:

Visibility Initiative (Garmin) - Update IAP visibility minimums IAW Order 8260.3, Chapter 3, Section 3-3. Visibility Minimums.

PROCESSED IAW TECHNICAL SUPPORT GROUP (AJF-17) MEMO DATED 07/07/2021, SUBJECT: GUIDANCE FOR PROCEDURAL CHANGES REQUIRING FLIGHT INSPECTION/VALIDATION.

CONTACT: CASEY HILL (405) 954-0624.

QUALITY
6 SN 4/10/26
CHECKED

QUALITY
9
CHECKED
BEGUE

WAAS CH 93901 W36A	APP CRS 001°	Rwy Idg TDZE 296 Apt Elev 298	6503
--	------------------------	---	-------------

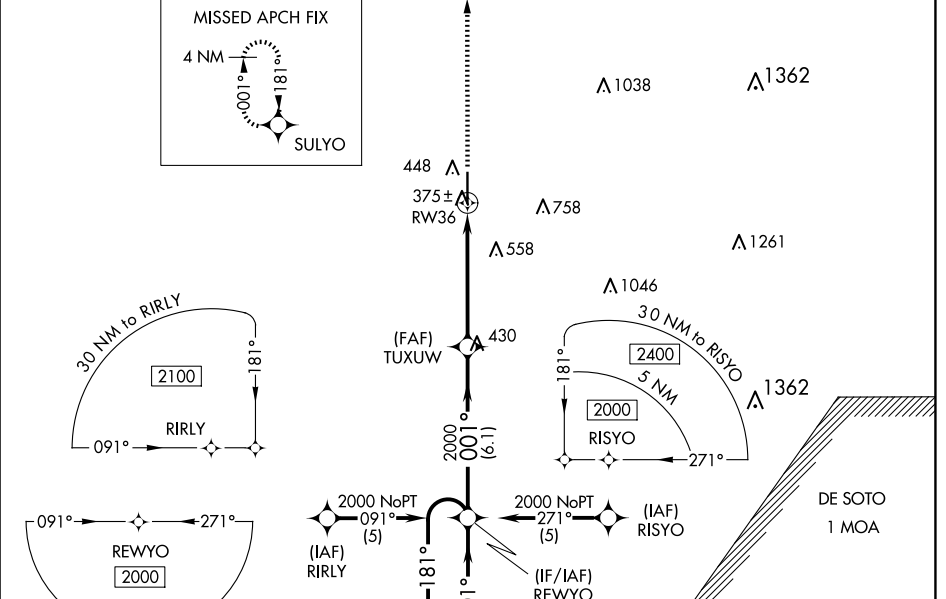
RNAV (GPS) RWY 36

HATTIESBURG/LAUREL RGNL (PIB)

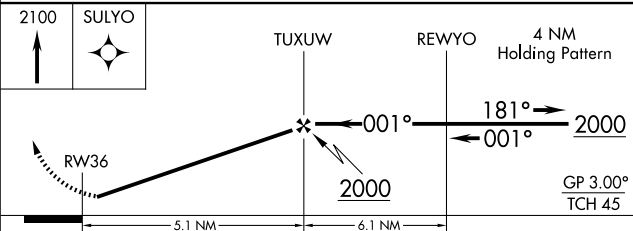
▼ For uncompensated Baro-VNAV systems, LNAV/VNAV NA below -1.5°C (5°F) or above 48°C (118°F). DME/DME RNP-0.3 NA. Visibility reduction by helicopters NA. When local altimeter setting not received, use Hattiesburg Bobby L Chain Muni altimeter setting: increase LPV DA to 597 feet and LNAV/VNAV DA to 676; increase all MDA 60 feet and visibility LNAV Cat C/D and Circling Cat C/D ¼ SM. Baro-VNAV NA when using Hattiesburg Bobby L Chain Muni altimeter setting.

▲ MISSED APPROACH: Climb to 2100 direct SULYO and hold.

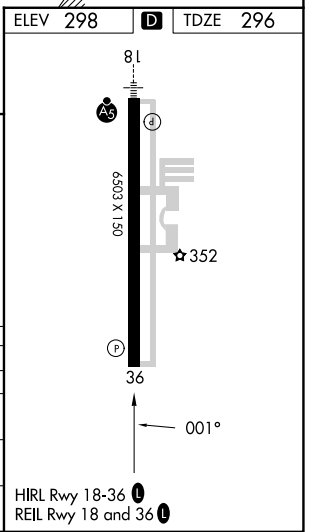
AWOS-3PT 128.325	HOUSTON CENTER 126.8 327.8	UNICOM 123.0 (CTAF) 0
----------------------------	--------------------------------------	---------------------------------



ELEV 298	D	TDZE 296
----------	----------	----------



CATEGORY	A	B	C	D
LPV DA	546-1 250 (300-1)			
LNAV/VNAV DA	625-1¼ 329 (400-1¼)			
LNAV MDA	680-1	384 (400-1)	680-1¼ 384 (400-1¼)	
CIRCLING	760-1	462 (500-1)	1120-2½ 822 (900-2½)	1120-2¾ 822 (900-2¾)



SC-4, 19 MAR 2026 to 16 APR 2026

SC-4, 19 MAR 2026 to 16 APR 2026