

Flight Procedures Cover Page	Task Action: FLIGHT CHECK	Task Type: IAP	Estimated Chart Date: 12/26/2024	APWS Task ID: 03F49EA84B804BBB8C770A3D9224C055	APWS Project ID: 9CAD9221B1FE4E90ADD3E730B5C2E781
Procedure: ILS OR LOC RWY 24 SA CAT I AMDT 17		Enroute: NO	Specialist: Sarmiento, April		Agreement Number:
Airport ID: KACK			Airport City: NANTUCKET		State: MA
Facility ID: ACK	Facility Type: ILS	Flight Inspection Remark Type: New FC Slot			

Procedure Comments:

PENDING DATA USED FOR KACK, I-ACK AND ACK VORDME

CONTACT BEV BORDY (405)954-8293

11/14/2024: THIS IS AN UPDATED COPY OF THE FORM DEVELOPED ON 06/27/2024.
MISSED APPROACH: CHANGED ACK VOR/DME R-241.03 TO R-240.



8260-2 OBUBE FIX

11/20/2024: THIS IS A CORRECTED COPY OF THE FORM APPROVED ON 11/15/2024.
FIX USE: ADDED HOLDING PATTERN 2 TO THE ILS OR LOC RWY 24 AND ILS RWY 24 (SA CAT 1). ADDED HOLDING PAT 1 TO THE RNAV (GPS) RWY 24.



FIPC BASIC FORM

PROCEDURE: ILS OR LOC RWY 24 AMDT 17		AIRPORT NAME: NANTUCKET MEML		AIRPORT ID: KACK	SPECIAL CONTROL NO: YP-08-068-24
FAC ID: ACK		CITY: NANTUCKET		ST: MA	ORIG CHART DATE: 12/26/2024
DFL TYPE: PROC/A	THIRD PARTY: <input type="checkbox"/> YES	EST. TIME ON SITE: 0.4	REIMB. NUMBER:	PTS TASK ID: 03F49EA84B804BBB8C770A3D9224C055	

PREFLIGHT NOTES

REVIEWER: michael g campbell			DATE: 11/08/2024		
COMMENTS:			CHECK ONE:		
			<input checked="" type="checkbox"/> FLT CK REQ <input type="checkbox"/> NFCR <input type="checkbox"/> REJECT		
			YES	NO	
			CPV COMPLETE?		X

PROCEDURE RESULTS

INSPECTION DATE: 11/05/2024	CREW #: VN504	N #: N68	INSTRUMENT PROCEDURE STATUS: <input type="checkbox"/> SAT <input checked="" type="checkbox"/> SAT W/CHANGES <input type="checkbox"/> UNSAT		ARINC CODING: <input checked="" type="checkbox"/> SAT <input type="checkbox"/> SAT/GOLD <input type="checkbox"/> UNSAT	
FLIGHT INSPECTOR SIGNATURE: michael g campbell @ 11/14/2024 09:02			PRINTED NAME: CAMPBELL, MICHAEL GRANT			NOTAM INITIATED? <input type="checkbox"/> YES <input checked="" type="checkbox"/> NO

FLIGHT INSPECTOR REMARKS:
SAT with changes. missed approach radial remains 240. Missed approach fix UFTAC did not move.

IN-FLIGHT OBSTACLE REPORT

OBSTRUCTION ID #:	COORDINATES OR LOCATION:	GNSS ALTITUDE (MSL):	BAROMETRIC ALTITUDE (MSL):	HEIGHT ABOVE GROUND LEVEL:
--------------------------	---------------------------------	-----------------------------	-----------------------------------	-----------------------------------

ILS or LOC RWY 24

NANTUCKET MEML (ACK)

LOC/DME I-ACK 109.1 Chan 28	APP CRS 241°	Rwy Idg TDZE Apt Elev	6303 47 47
---	------------------------	-----------------------------	---------------------------------------

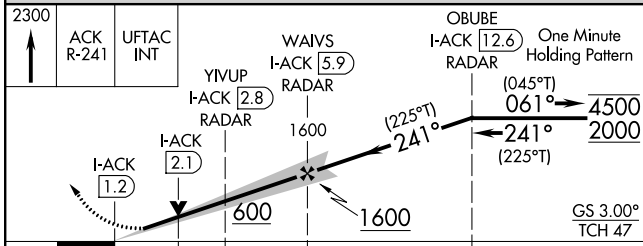
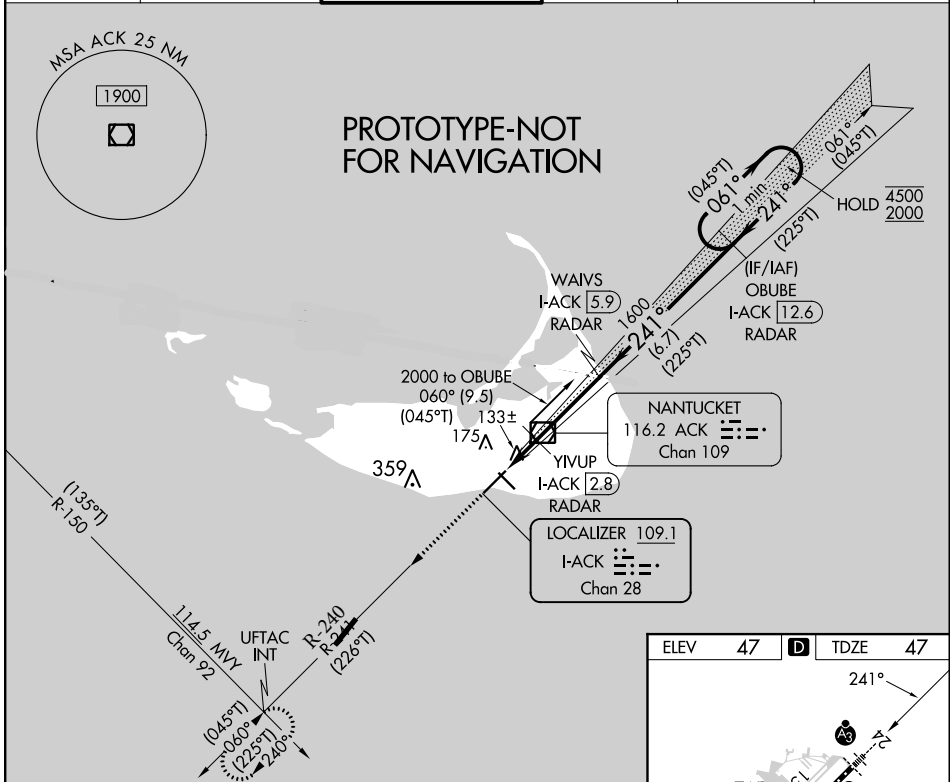
DME or RADAR required.

For inop ALS, increase S-LOC 24 Cat C and D visibility to RVR 5500.

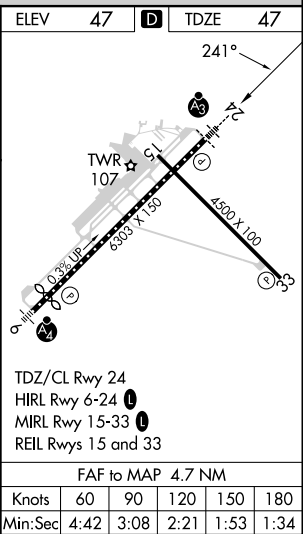


MISSED APPROACH:
Climb to 2300 on
ACK VOR/DME R-241
to UFTAC INT and hold.

ATIS 127.5	BOSTON APP CON * 126.1 318.1	NANTUCKET TOWER * 118.3 (CTAF) 0	GND CON 132.5	CLNC DEL 119.375	UNICOM 122.95
----------------------	--	---	-------------------------	----------------------------	-------------------------



CATEGORY	A	B	C	D
S-ILS 24	247/18		200 (200-½)	
S-LOC 24	400/24	353 (400-½)	400/30	353 (400-¾)
CIRCLING	480-1	500-1	720-2	720-2¼
	433 (500-1)	453 (500-1)	673 (700-2)	673 (700-2¼)



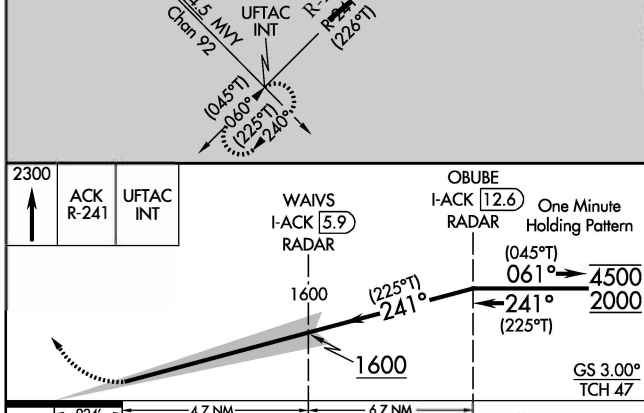
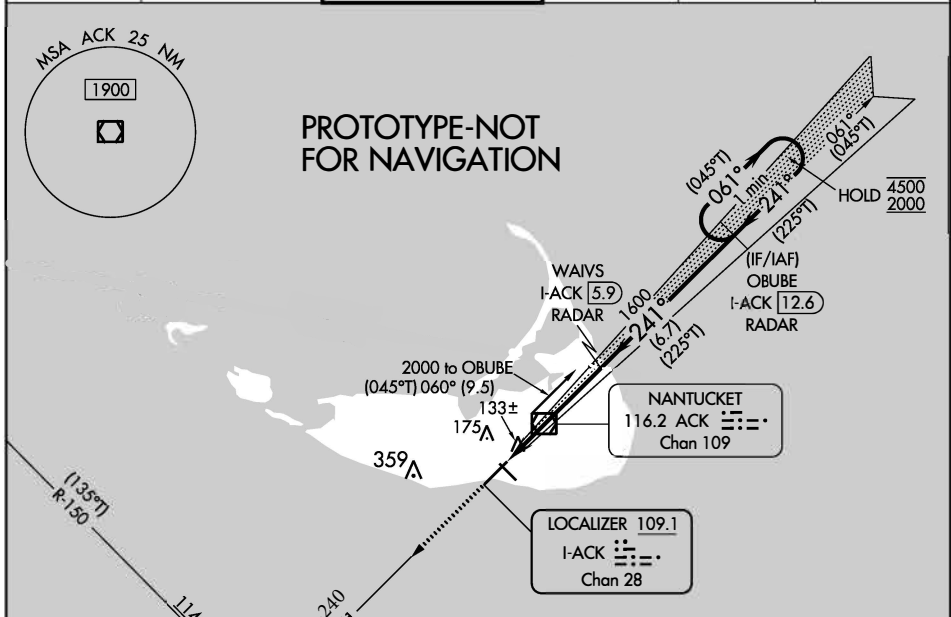
LOC/DME I-ACK 109.1 Chan 28	APP CRS 241°	Rwy Idg TDZE Apt Elev	6303 47 47
---	------------------------	-----------------------------	---------------------------------------

ILS RWY 24 (SA CAT I)

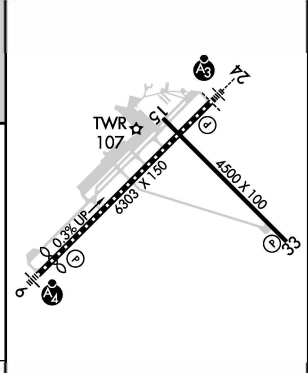
NANTUCKET MEML (ACK)

DME or RADAR required.		SSALR 	MISSED APPROACH: Climb to 2300 on ACK VOR/DME R-241 to UFTAC INT and hold.
Procedure NA when control tower closed. Requires specific OPSEC, MSPEC, or LOA approval.			

ATIS 127.5	BOSTON APP CON ★ 126.1 318.1	NANTUCKET TOWER ★ 118.3 (CTAF) 0	GND CON 132.5	CLNC DEL 119.375	UNICOM 122.95
----------------------	--	--	-------------------------	----------------------------	-------------------------



ELEV 47	D	TDZE 47
---------	----------	---------



CATEGORY	A	B	C	D
S-ILS 10R	RA 141/14	150	DA 197	

SA CAT I ILS - SPECIAL AIRCREW & AIRCRAFT CERTIFICATION REQUIRED

TDZ/CL Rwy 24
HIRL Rwy 6-24 0
MIRL Rwy 15-33 0
REIL Rws 15 and 33

CURRENT

ILS or LOC RWY 24
NANTUCKET MEML (ACK)

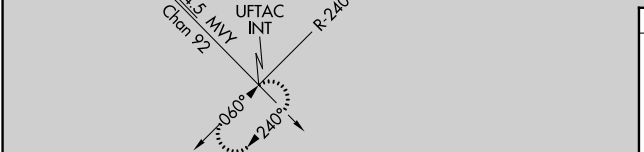
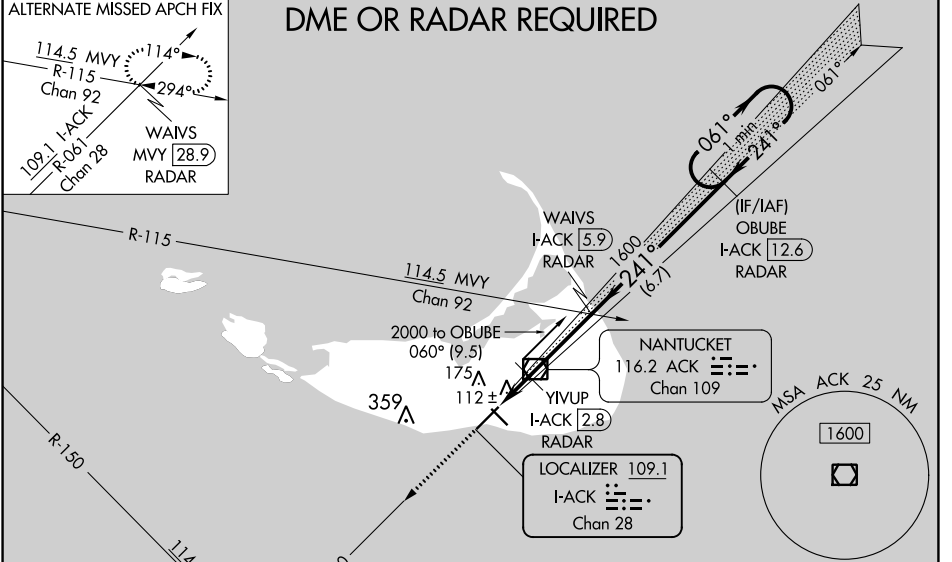
LOC/DME I-ACK 109.1 Chan 28	APP CRS 241°	Rwy Idg TDZE Apt Elev 6303 47 47
---	------------------------	--

When local altimeter setting not received, use Hyannis altimeter setting and increase DA to 310 and all MDA 80 feet. Increase S-ILS 24, all Cats, visibility to RVR 2000, S-LOC 24 Cats C/D visibility to RVR 4000 and increase Circling Cats C/D ¼ SM. VDP NA when using Hyannis altimeter setting. For inop SSALR when using the Hyannis altimeter setting, increase S-ILS 24, all Cats, visibility to RVR 4500 and increase S-LOC 24 Cats C/D visibility to RVR 6000.

SSALR

MISSED APPROACH:
Climb to 2300 on
ACK VOR/DME R-240
to UFTAC INT and hold.

ATIS 127.5	BOSTON APP CON * 126.1 318.1	NANTUCKET TOWER * 118.3 (CTAF) 0	GND CON 132.5	CLNC DEL 119,375	UNICOM 122.95
----------------------	--	--	-------------------------	----------------------------	-------------------------



ELEV 47	D	TDZE 47
---------	----------	---------

Diagram details: TWR 107, 4500 X 100, 6303 X 1150, 0.2% UP, 241°.

TDZ/CL Rwy 24	HIRL Rwy 6-24 0	MIRL Rwy 15-33 0	REIL Rwys 15 and 33		
FAF to MAP 4.7 NM					
Knots	60	90	120	150	180
Min:Sec	4:42	3:08	2:21	1:53	1:34

2300	ACK R-240	UFTAC INT	YIVUP I-ACK 2.8 RADAR	WAIVS I-ACK 5.9 RADAR	OBUBE I-ACK 12.6 RADAR	One Minute Holding Pattern
*LOC only.						

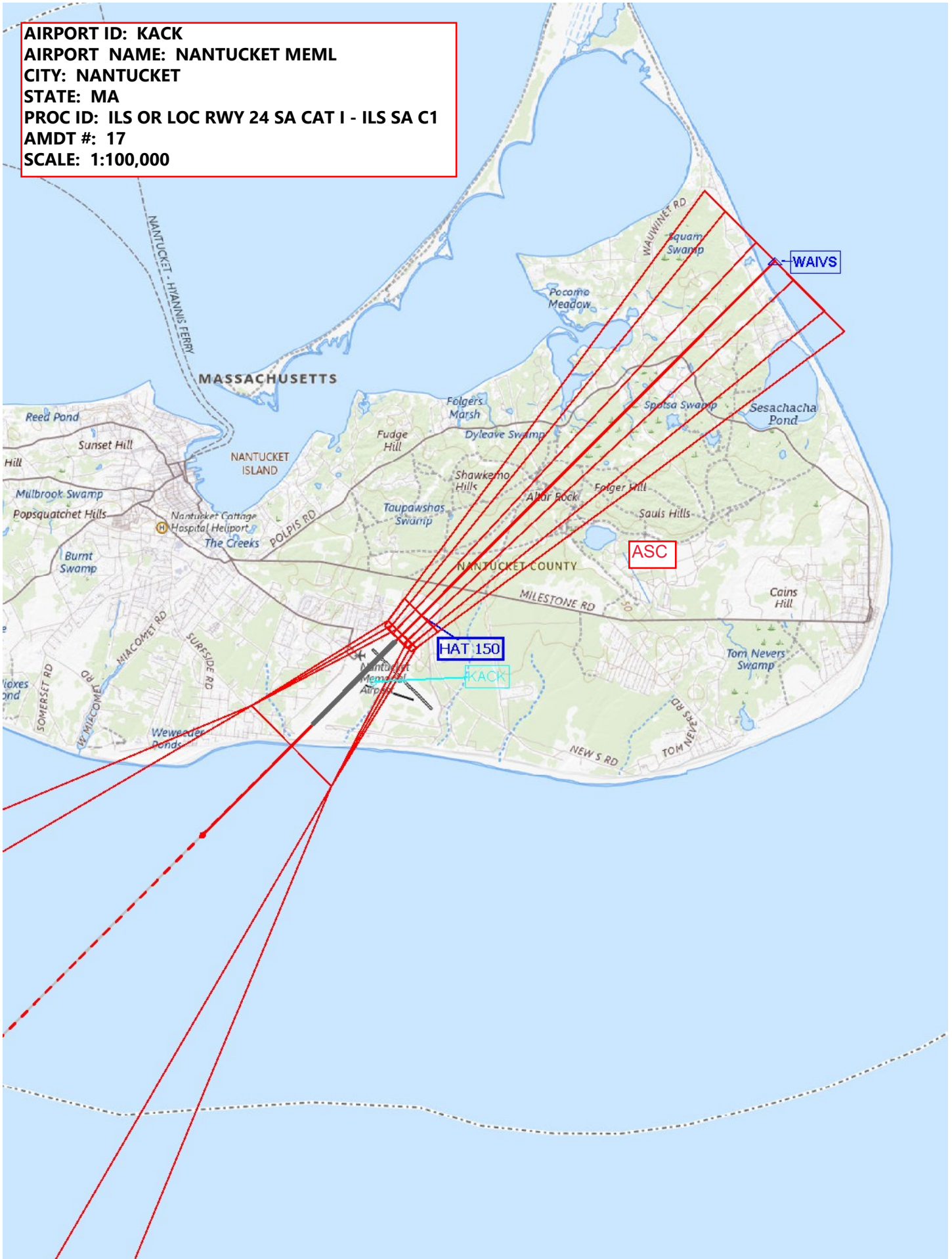
CATEGORY	A	B	C	D
S-ILS 24	247/18 200 (200-½)			
S-LOC 24	380/24	333 (400-½)	380/26	333 (400-½)
CIRCLING	480-1	500-1	720-2	720-2¼
	433 (500-1)	453 (500-1)	673 (700-2)	673 (700-2¼)

NANTUCKET MEML (ACK)
ILS or LOC RWY 24

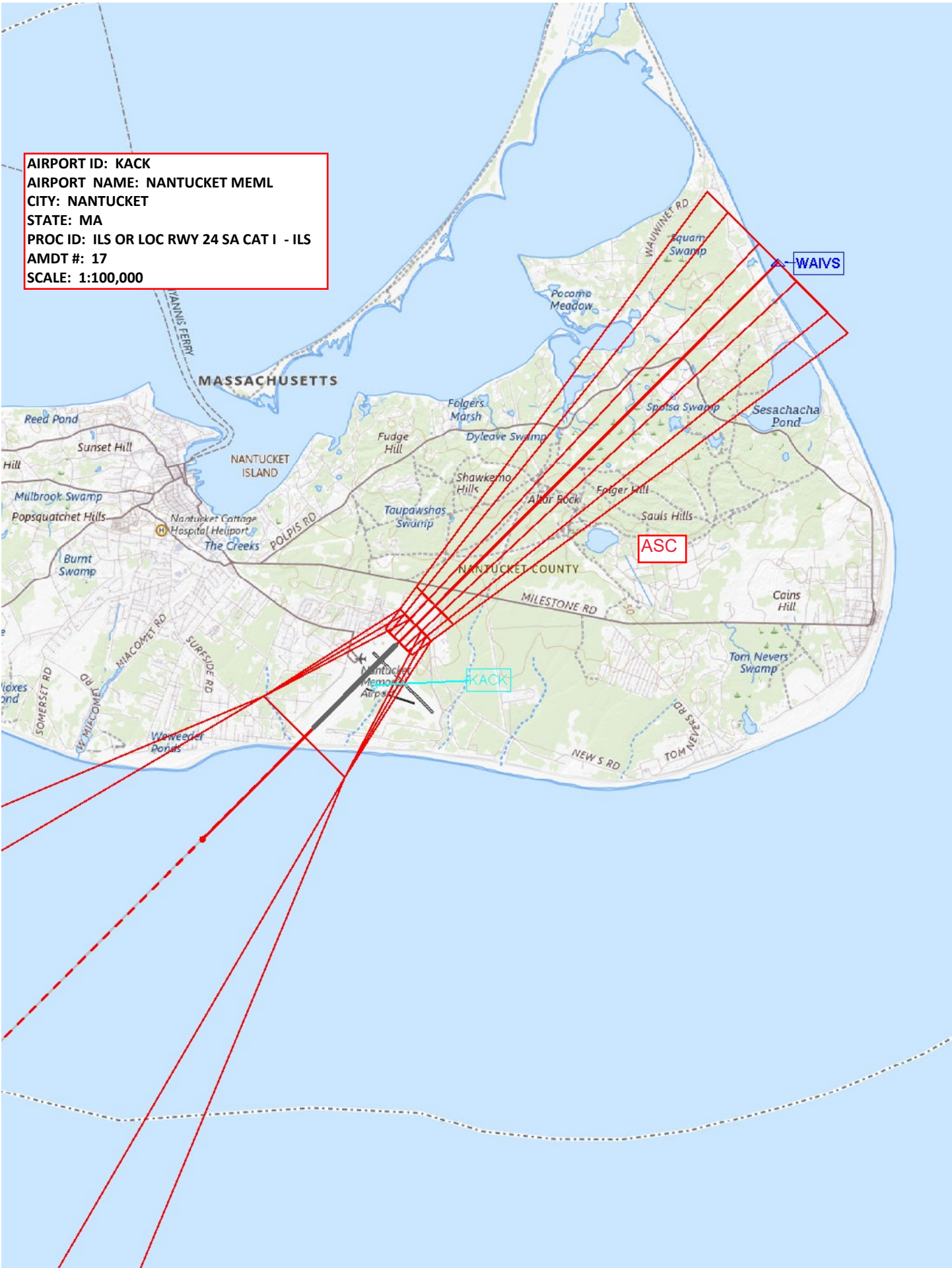
NE-1, 18 APR 2024 to 16 MAY 2024

NE-1, 18 APR 2024 to 16 MAY 2024

AIRPORT ID: KACK
AIRPORT NAME: NANTUCKET MEML
CITY: NANTUCKET
STATE: MA
PROC ID: ILS OR LOC RWY 24 SA CAT I - ILS SA C1
AMDT #: 17
SCALE: 1:100,000



AIRPORT ID: KACK
AIRPORT NAME: NANTUCKET MEML
CITY: NANTUCKET
STATE: MA
PROC ID: ILS OR LOC RWY 24 SA CAT I - ILS
AMDT #: 17
SCALE: 1:100,000



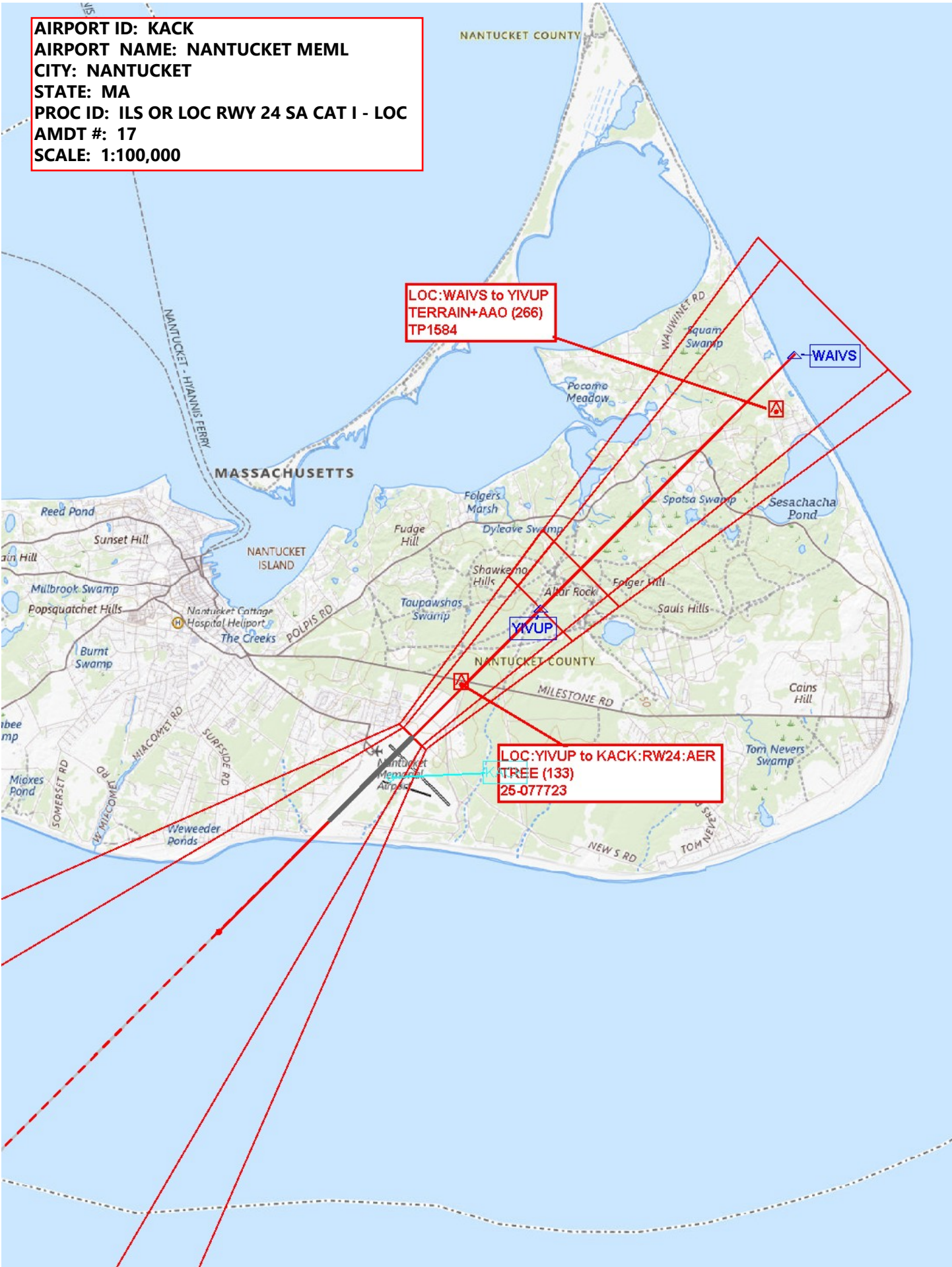
AIRPORT ID: KACK
AIRPORT NAME: NANTUCKET MEML
CITY: NANTUCKET
STATE: MA
PROC ID: ILS OR LOC RWY 24 SA CAT I - LOC
AMDT #: 17
SCALE: 1:100,000

LOC:WAIVS to YIVUP
TERRAIN+AAO (266)
TP1584

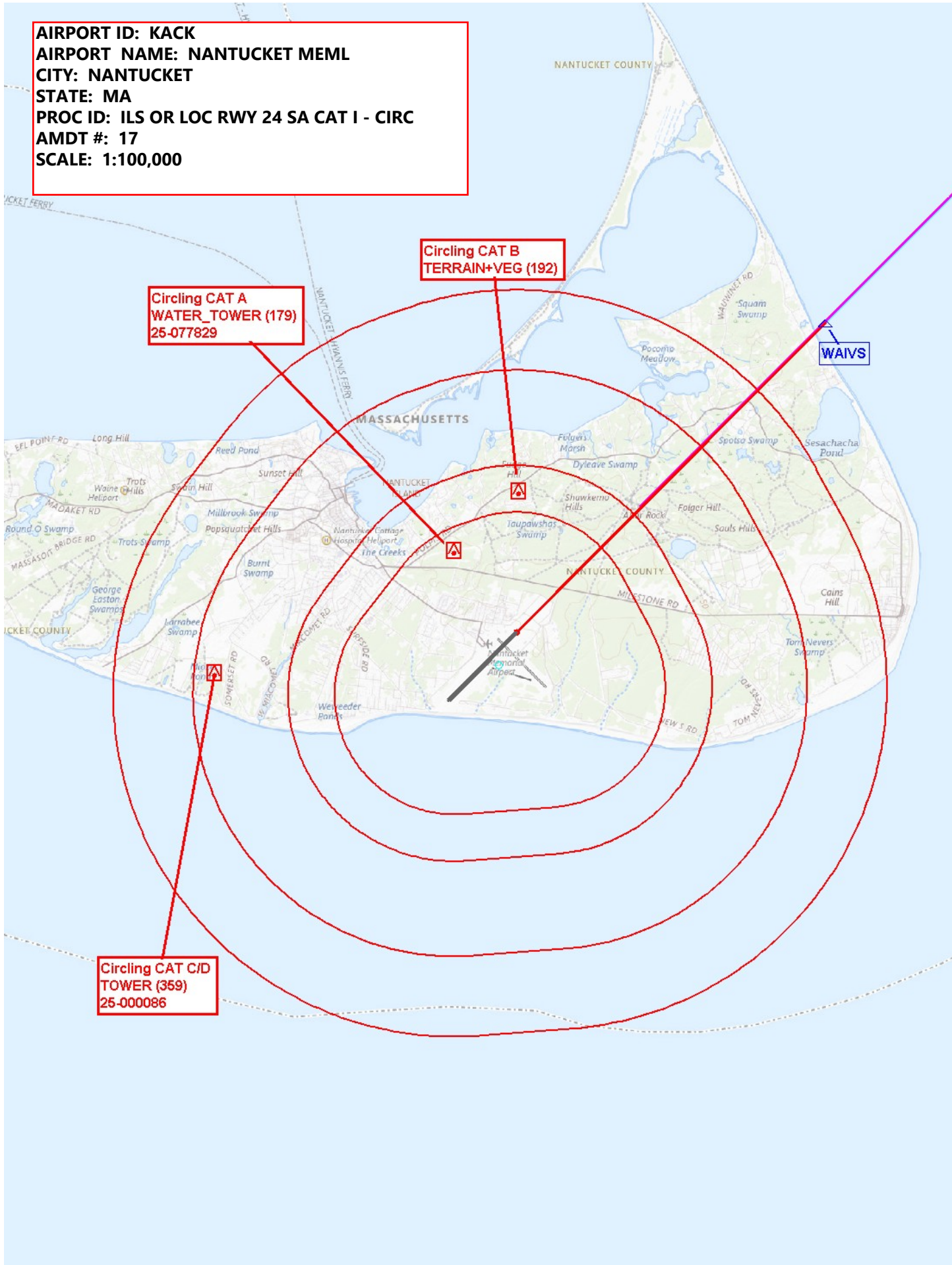
WAIVS

LOC:YIVUP to KACK:RW24:AER
TREE (133)
25-077723

YIVUP



AIRPORT ID: KACK
AIRPORT NAME: NANTUCKET MEML
CITY: NANTUCKET
STATE: MA
PROC ID: ILS OR LOC RWY 24 SA CAT I - CIRC
AMDT #: 17
SCALE: 1:100,000



AIRPORT ID: KACK
AIRPORT NAME: NANTUCKET MEML
CITY: NANTUCKET
STATE: MA
PROC ID: ILS OR LOC RWY 24 SA CAT I
AMDT #: 17
SCALE: 1:100,000

**OBUBE HIL/
OBUBE TO WAIVS
SHIP (250)**

**LOC:WAIVS to YVUP
TERRAIN+AAO (266)**

**LOC:YVUP to KACK:RWY24:AER
TREE (133)
25-077723**

**UFTAC holding
WINDMILL (837)
25-076756**

**KACK:VOR/DME to OBUBE
TERRAIN+AAO (302)**

**Missed Level Surface
TRAVERSE_WAY (250)
25-047559**

