

Flight Procedures Cover Page	Task Action: Cancellation	Task Type: SID	Estimated Chart Date: 05/14/2026	APWS Task ID: 0580F1B8DC014EE695925325389BC90D	APWS Project ID: F70AEC0CE8264A20BD83AF68846F40AC
Procedure: CICERO FOUR DEPARTURE		Enroute: YES	Specialist: Cyrus, Theron		Agreement Number:
Airport ID: KMDW			Airport City: CHICAGO		State: IL
Facility ID:	Facility Type:	Flight Inspection Remark Type:			

Procedure Comments:
PROCEDURE CANCELED,

CONTACT CASIMIR TABAKA 405 202 7857.

2/13/2026: THIS IS AN UPDATED COPY OF THE FORM DEVELOPED ON:
11/20/2025. 1. ADDED IAP RNAV (GPS) RWY 22R (MDW). PEOTONE VORTAC

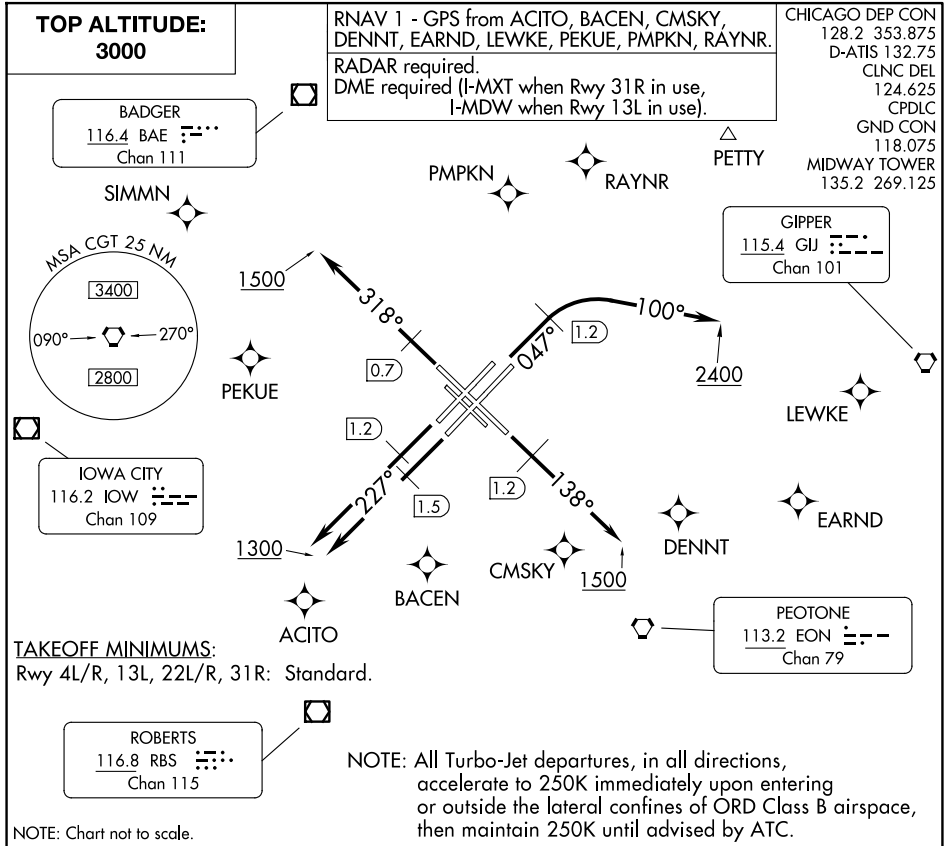


CICERO FOUR DEPARTURE

AL-81 (FAA)

CHICAGO MIDWAY INTL (MDW)

CHICAGO, ILLINOIS



EC-3, 30 OCT 2025 to 27 NOV 2025

EC-3, 30 OCT 2025 to 27 NOV 2025

DEPARTURE ROUTE DESCRIPTION

TAKEOFF RUNWAYS 4L/R: Assigned headings 360° (CW) thru 080° climb on heading 047° to 1.2 DME, then continue climbing right turn heading 100° to 2400, thence....

TAKEOFF RUNWAY 13L: Climb on heading 138° to 1.2 DME, then continue climb to 1500, thence....

TAKEOFF RUNWAY 22L: Climb on heading 227° to 1.5 DME, then continue climb to 1300, thence....

TAKEOFF RUNWAY 22R: Climb on heading 227° to 1.2 DME, then continue climb to 1300, thence....

TAKEOFF RUNWAY 31R: Climb on heading 318° to 0.7 DME, then continue climb to 1500, thence....

ALL AIRCRAFT: Expect RADAR vectors to first enroute fix. Maintain 3000 or assigned lower altitude. Expect clearance to requested altitude/flight level 10 (ten) minutes after departure. Complete initially assigned turn within 4 DME.

....on tower assigned heading/vector to assigned altitude.

CICERO FOUR DEPARTURE

CHICAGO, ILLINOIS
CHICAGO MIDWAY INTL (MDW)