

Flight Procedures Cover Page	Task Action: Abbreviated Amendment	Task Type: SID	Estimated Chart Date: 05/14/2026	APWS Task ID: 05873D63A40540E8B6C4D7F786CDFA95	APWS Project ID: CDFAF0A2C4BA4A70A050E721D847D817
Procedure: KNIGHTS FOUR DEPARTURE		Enroute: YES	Specialist: Hirst, Charles		Agreement Number:
Airport ID: KCLT			Airport City: CHARLOTTE		State: NC
Facility ID: CLT	Facility Type: VOR_DME	Flight Inspection Remark Type:			

Procedure Comments:

RWY NUMBER CHANGING FROM 18R/36L TO 1L/19R.

PENDING AIRNAV AIRPORT & NAVAID DATA USED.

CANCEL NOTAMS 4/9225, 4/9229, 4/9231, 4/9236, 4/9239, 4/9242, 4/9244, 4/9248, 4/9250 BY REMOVING ANDYS TRANSITION.

PROCESSED IAW TECHNICAL SUPPORT GROUP (AJF-17) MEMO DATED 07/07/2021, SUBJECT: GUIDANCE FOR PROCEDURAL CHANGES REQUIRING FLIGHT INSPECTION VALIDATION.

FOR ADDITIONAL INFORMATION CONTACT CASIMIR TABAKA, MANAGER 405-954-7931

04/022026: THIS IS A CORRECTED COPY OF THE FORM APPROVED ON 12/05/2025.
TAKEOFF MINIMUMS: CHANGED AIRPORT ID FROM LKW TO LKR.



ACTIVE PROCEDURE

(KNI3.KNI) 24081

AL-78 (FAA)

CHARLOTTE/DOUGLAS INTL (CLT)
CHARLOTTE, NORTH CAROLINA

KNIGHTS THREE DEPARTURE



DEPARTURE ROUTE DESCRIPTION

TAKEOFF RUNWAYS 18L/R: Climb on heading 183° or as assigned by ATC, thence. . . .
TAKEOFF RUNWAY 18C: Climb on heading 183° to 1200 before turning left, thence. . . .
TAKEOFF RUNWAY 36L: Climb on heading 003° to 1800 before turning left, thence. . . .
TAKEOFF RUNWAY 36C: Climb on heading 003° to 1400 before turning left, thence. . . .
TAKEOFF RUNWAY 36R: Climb on heading 003° or as assigned by ATC, thence. . . .

. . . .expect RADAR vectors to intercept filed/assigned transition or enroute fix/navaid.
Maintain 4000, expect filed altitude/flight level 10 minutes after departure.

ANDYS TRANSITION (KNI3.ANDYS): From over CLT VOR/DME on CLT R-196 to ANDYS.
CEGAL TRANSITION (KNI3.CEGAL): From over CLT VOR/DME on CLT R-360 to CEGAL.
DEBIE TRANSITION (KNI3.DEBIE): From over CLT VOR/DME on CLT R-255 to DEBIE.
FLYYN TRANSITION (KNI3.FLYYN): From over CLT VOR/DME on CLT R-360 to FLYYN.
HAMLN TRANSITION (KNI3.HAMLN): From over CLT VOR/DME on CLT R-175 to HAMLN.
LILLS TRANSITION (KNI3.LILLS): From over CLT VOR/DME on CLT R-112 to LILLS.
NEANO TRANSITION (KNI3.NEANO): From over CLT VOR/DME on CLT R-275 to BOBZY,
then on ODF R-070 to NEANO.
PEKNN TRANSITION (KNI3.PEKNN): From over CLT VOR/DME on CLT R-093 to GIPPR,
then on SDZ R-272 to PEKNN.

SE-2, 02 OCT 2025 to 30 OCT 2025

SE-2, 02 OCT 2025 to 30 OCT 2025

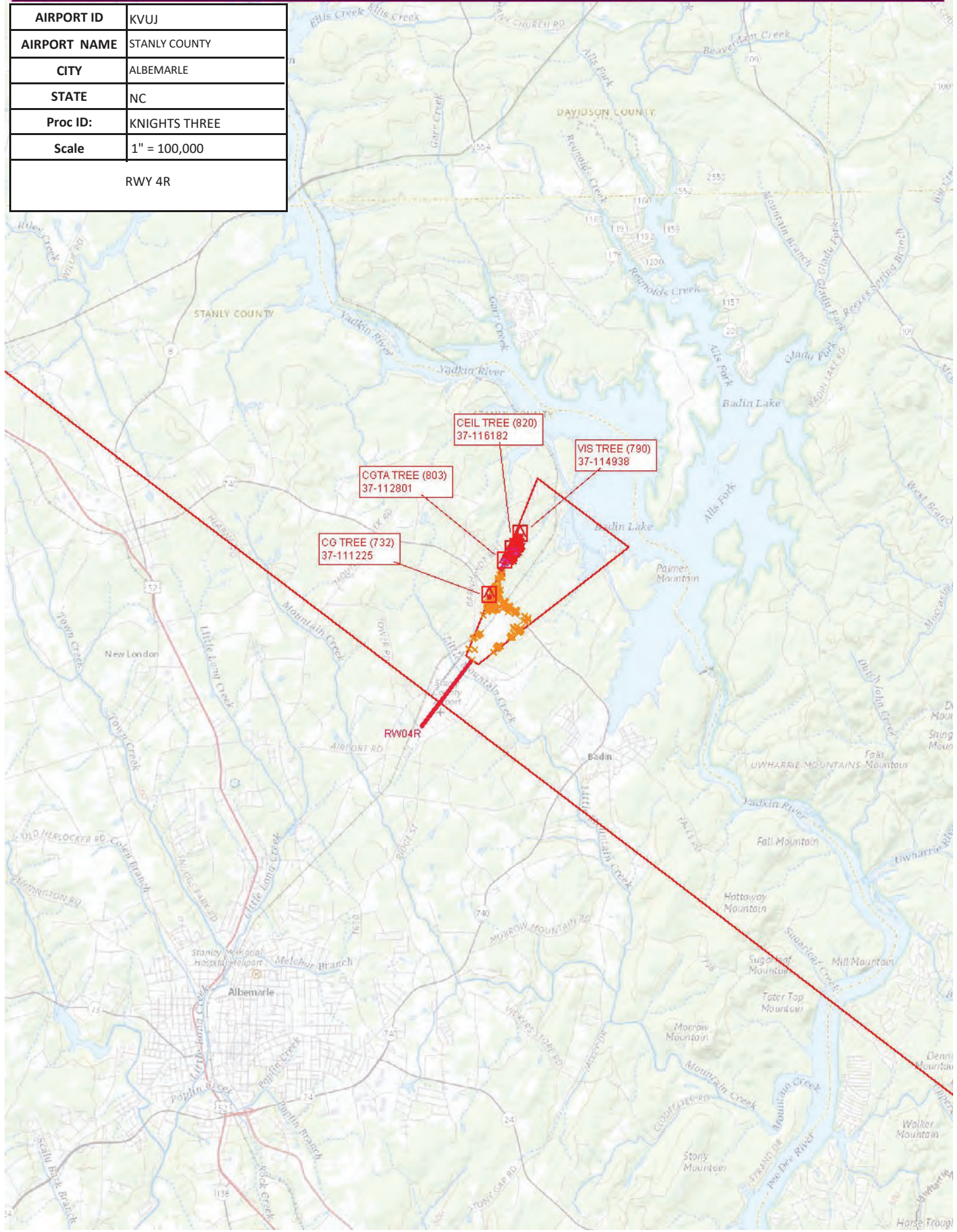
KNIGHTS THREE DEPARTURE

(KNI3.KNI) 21MAR24

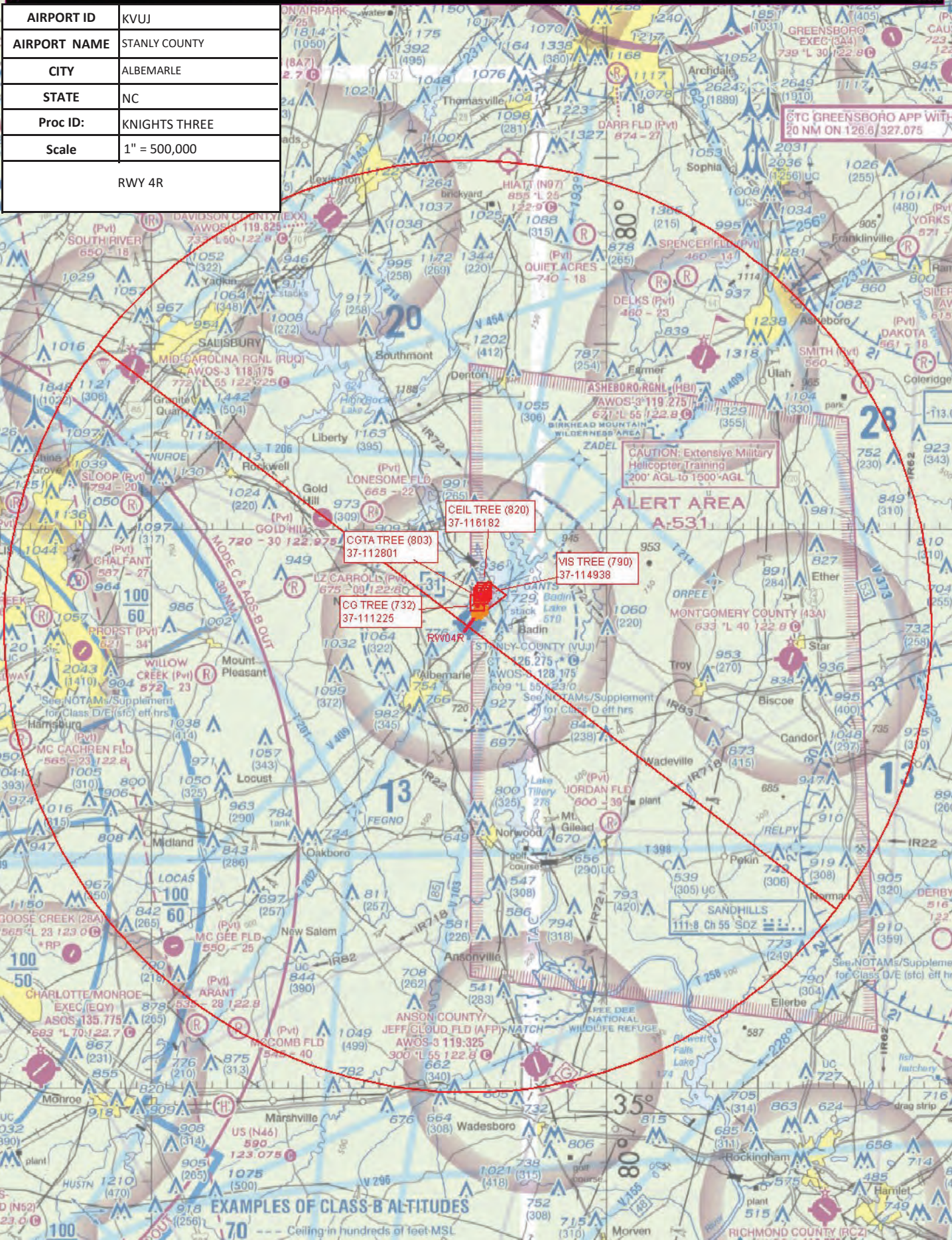
CHARLOTTE, NORTH CAROLINA
CHARLOTTE/DOUGLAS INTL (CLT)



AIRPORT ID	KVUJ
AIRPORT NAME	STANLY COUNTY
CITY	ALBEMARLE
STATE	NC
Proc ID:	KNIGHTS THREE
Scale	1" = 100,000
RWY 4R	



AIRPORT ID	KVUJ
AIRPORT NAME	STANLY COUNTY
CITY	ALBEMARLE
STATE	NC
Proc ID:	KNIGHTS THREE
Scale	1" = 500,000
RWY 4R	



CTC GREENSBORO APP WITH
 20 NM ON 126.8/327.075

CAUTION: Extensive Military
 Helicopter Training
 200' AGL to 1500' AGL

CEIL TREE (820)
 37-118182

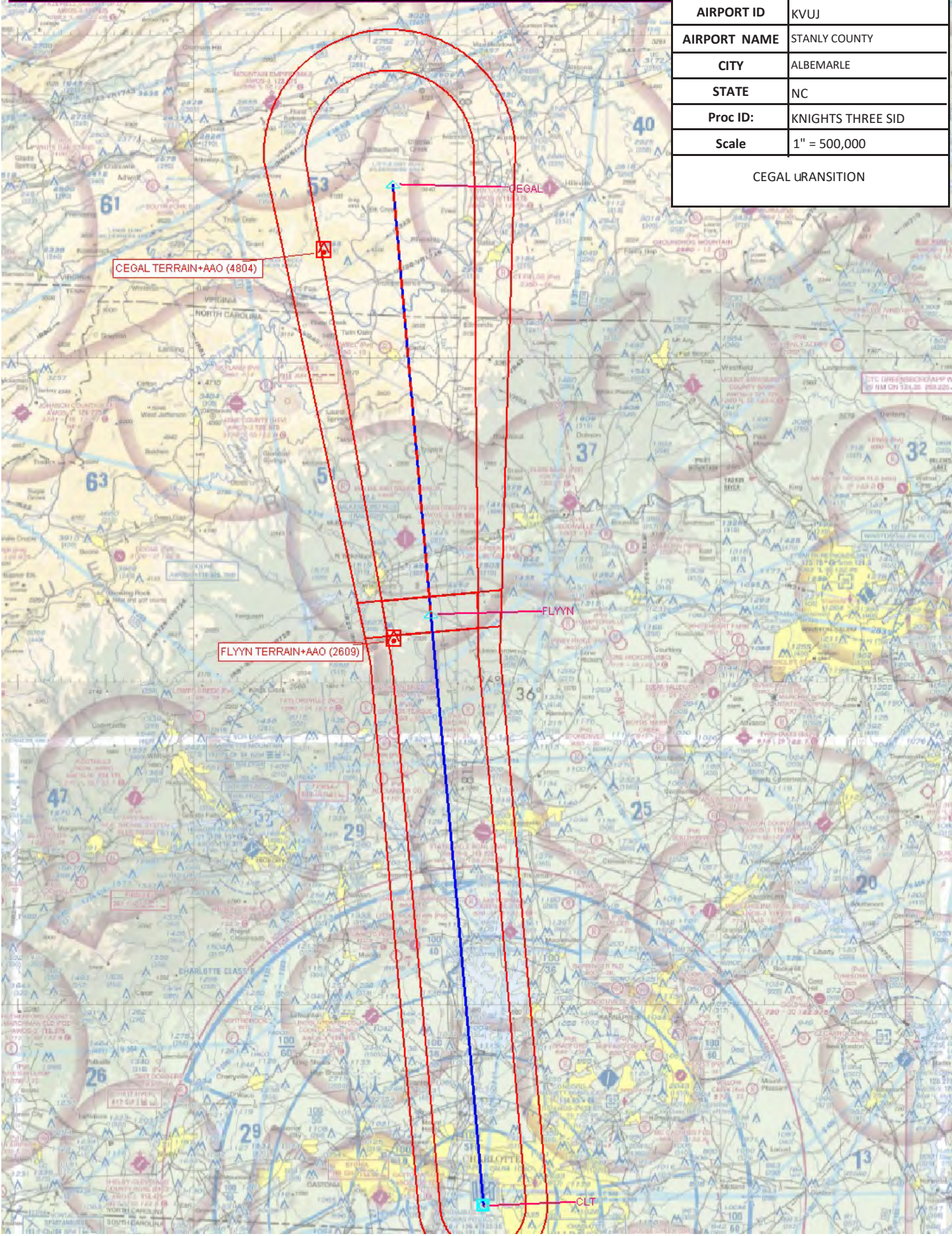
VIS TREE (790)
 37-114938

CGTA TREE (803)
 37-112801

CG TREE (732)
 37-111225

EXAMPLES OF CLASS-B ALTITUDES
 70 --- Ceiling in hundreds of feet MSL

AIRPORT ID	KVUJ
AIRPORT NAME	STANLY COUNTY
CITY	ALBEMARLE
STATE	NC
Proc ID:	KNIGHTS THREE SID
Scale	1" = 500,000
CEGAL URANSITION	



CEGAL TERRAIN+AAO (4804)

FLYNN TERRAIN+AAO (2609)

CEGAL

FLYNN

CLT