

Flight Procedures Cover Page	Task Action: P-NOTAM	Task Type: IAP	Estimated Chart Date: 03/23/2023	APWS Task ID: 063B43509624430AB7A8400D059BDDFF	APWS Project ID: 86887D6A9F3B420682D0AA34B1C418ED
Procedure: VOR RWY 4R AMDT 0B		Enroute: NO	Specialist: Ciarlone, Mark		Agreement Number:
Airport ID: KCHD			Airport City: CHANDLER		State: AZ
Facility ID:	Facility Type:	Flight Inspection Remark Type:			

Procedure Comments:
NEW CIRCLING AREAS.

PROCESSED IAW AIRCRAFT OPERATIONS GROUP (AJF-10) MEMO, APRIL 29, 2020 SUBJECT: FLIGHT INSPECTION REVIEW NOT REQUIRED.

CONTACT: JASON KRETCHMER, 405-954-4019.

Digitally signed by **MARY MCDONALD 12**
Mar 12, 2021

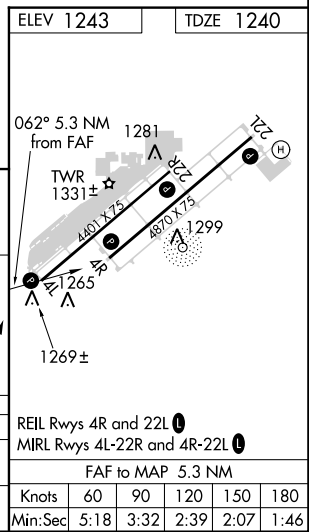
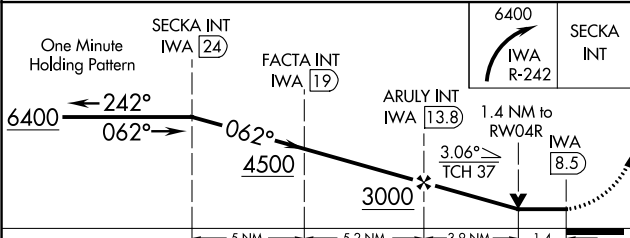
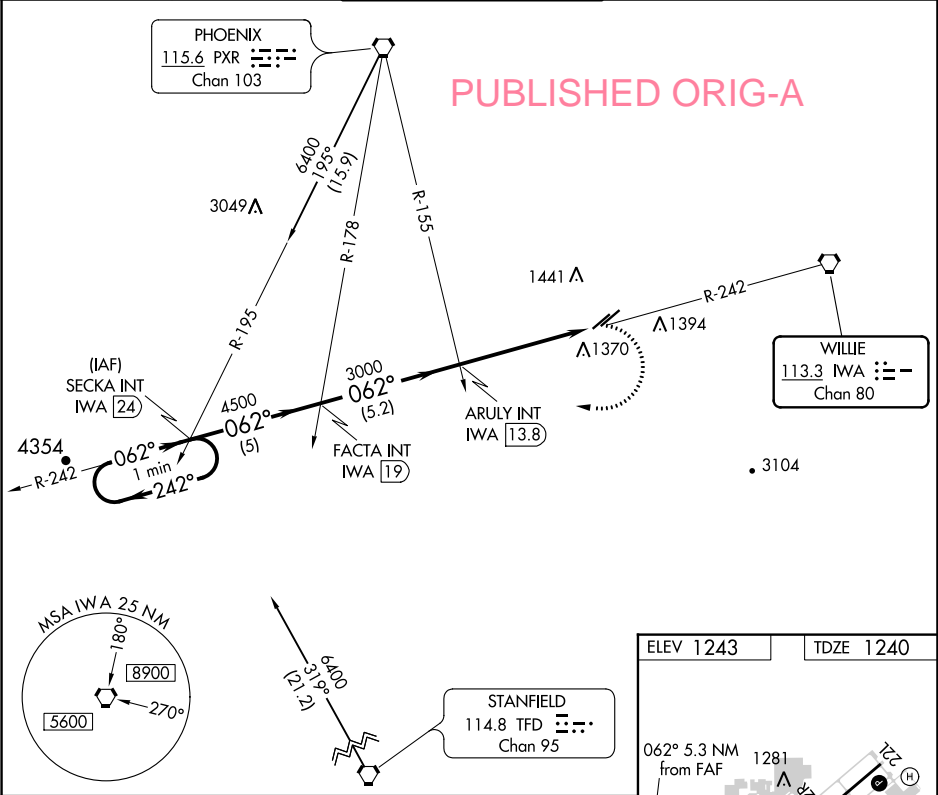



VORTAC IWA 113.3 Chan 80	APP CRS 062°	Rwy Idg 4870 TDZE 1240 Apt Elev 1243
--	------------------------	---

VOR RWY 4R
CHANDLER MUNI (CHD)

When VGSI inoperative, Circling Rwy 4L NA at night. MISSED APPROACH: Climbing right turn to 6400 via IWA R-242 to SECKA Int and hold.

ATIS 128.325	PHOENIX APP CON 123.7 363.0	CHANDLER TOWER* 126.1 (CTAF) 133.1 (North and West) (South and East)	GND CON 124.4	UNICOM 122.95
------------------------	---------------------------------------	--	-------------------------	-------------------------



CATEGORY	A	B	C	D
S-4R	1680-1	440 (500-1)	1680-1¼ 440 (500-1¼)	NA
CIRCLING	1720-1	477 (500-1)	1720-1½ 477 (500-1½)	NA

REIL Rws 4R and 22L

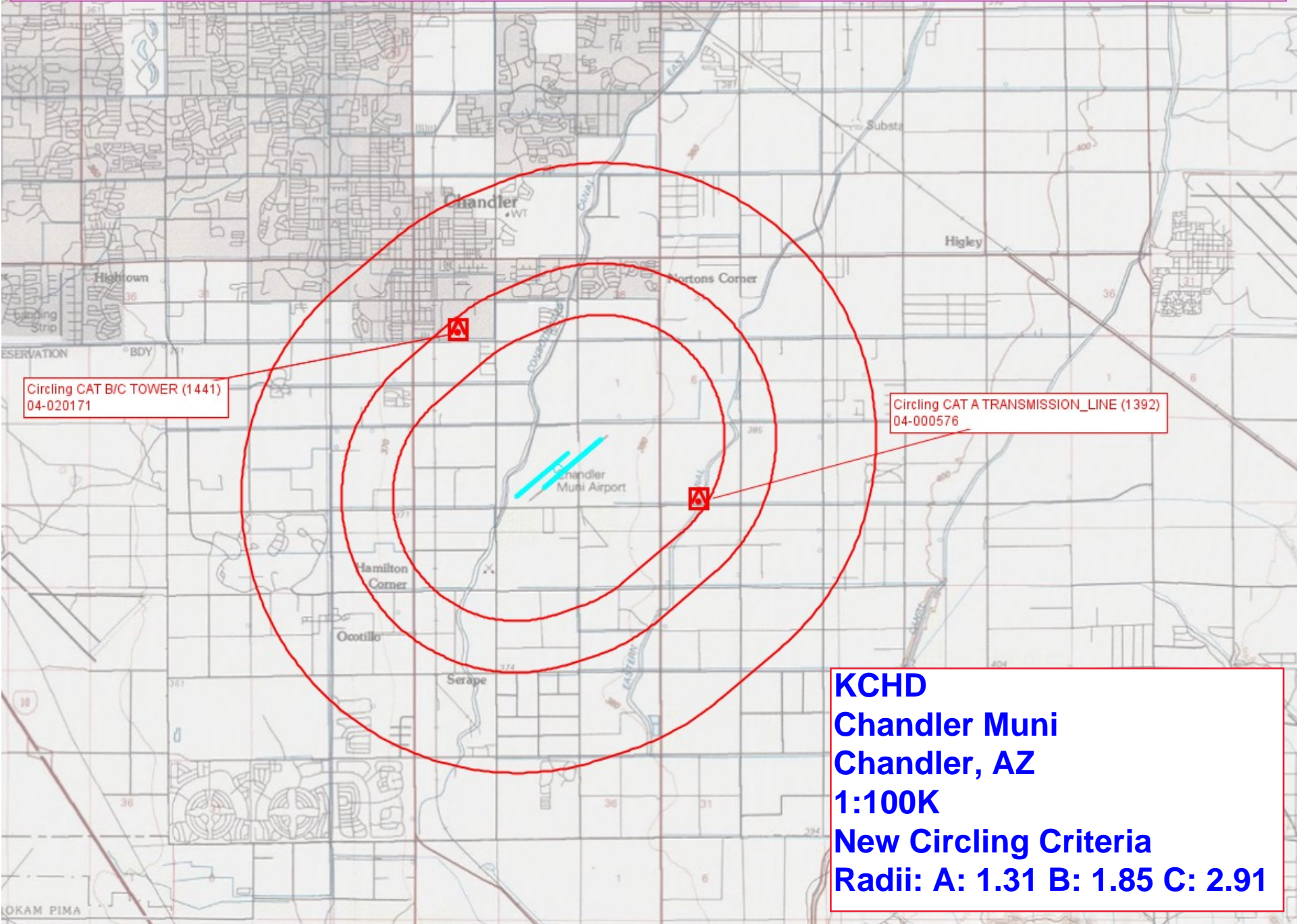
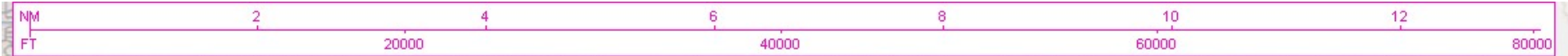
MIRL Rws 4L-22R and 4R-22L

FAF to MAP 5.3 NM

Knots	60	90	120	150	180
Min:Sec	5:18	3:32	2:39	2:07	1:46

SW-4, 05 NOV 2020 to 03 DEC 2020

SW-4, 05 NOV 2020 to 03 DEC 2020



Circling CAT B/C TOWER (1441)
04-020171

Circling CAT A TRANSMISSION_LINE (1392)
04-000576

KCHD
Chandler Muni
Chandler, AZ
1:100K
New Circling Criteria
Radii: A: 1.31 B: 1.85 C: 2.91