

Flight Procedures Cover Page	Task Action: FLIGHT CHECK	Task Type: IAP	Estimated Chart Date: 02/25/2021	APWS Task ID: 06B7EA48625E465CBD196DE50B69AACE	APWS Project ID: 5998681EB2624862A4C96739C0737CBE
Procedure: RNAV (GPS) RWY 32 AMDT 0A		Enroute: NO	Specialist: Roslewski, Russell		Agreement Number:
Airport ID: KHII	Airport Name: LAKE HAVASU CITY	Airport City: LAKE HAVASU CITY			State: AZ
Facility ID:	Facility Type:	Flight Inspection Remark Type: New FC Slot			

Procedure Comments:

PROCESSED IAW AIRCRAFT OPERATIONS GROUP (AJF-1000) MEMO, DATED JUNE 4, 2020, SUBJECT: FLIGHT INSPECTION OF NEW CONTROLLING OBSTACLES.

Jason Kretschmer, 405-954-4019

QUALITY
22
CHECKED

10.14.2020
BD

QUALITY
41
CHECKED

WAAS CH 49110 W32A	APP CRS 317°	Rwy Idg TDZE Apt Elev	8000 783 783
--	------------------------	-----------------------------	---

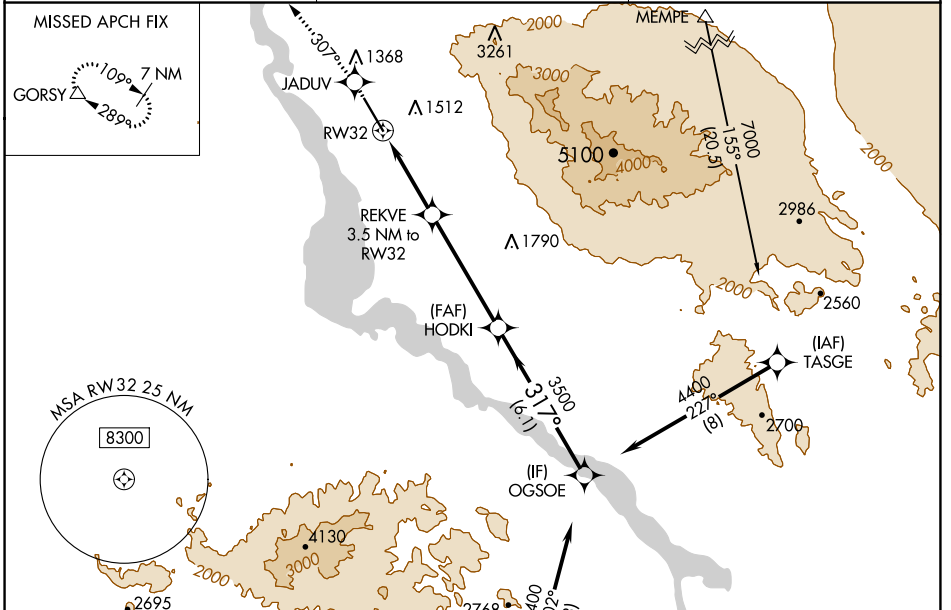
RNAV (GPS) RWY 32

LAKE HAVASU CITY (HII)

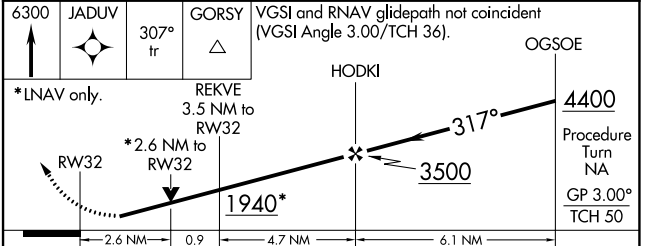
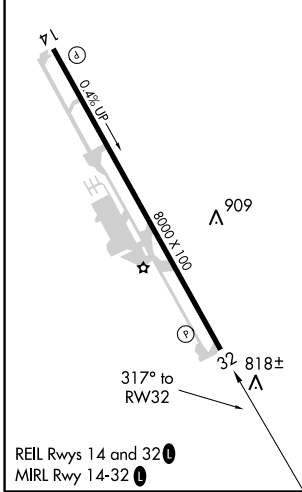
NA DME/DME RNP-0.3 NA. Visibility reduction by helicopters NA. When local altimeter setting not received, use Needles altimeter setting and increase all DA/MDA 80 feet and all visibilities ½ mile. VDP NA when using Needles altimeter setting. Circling NA northeast of Rwy 14-32.

MISSED APPROACH: Climb to 6300 direct JADUV and via 307° track to GORSY and hold, continue climb-in-hold to 6300.

AWOS-3 119.025	LOS ANGELES CENTER 134.65 314.2	UNICOM 122.7 (CTAF)
--------------------------	---	-------------------------------



ELEV 783	TDZE 783
----------	----------



CATEGORY	A	B	C	D
LPV DA		1265-1¾	482 (500-1¼)	
LNAV MDA	1660-1 877 (900-1)	1660-1¼ 877 (900-1¼)	1660-2½ 877 (900-2½)	1660-2¾ 877 (900-2¾)
CIRCLING	1660-1 877 (900-1)	1660-1¼ 877 (900-1¼)	1660-2½ 877 (900-2½)	1660-2¾ 877 (900-2¾)

SW-4, 13 AUG 2020 to 10 SEP 2020

SW-4, 13 AUG 2020 to 10 SEP 2020

KHII
Lake Havasu City, AZ
1:100k
Circling - all procedures

