

Flight Procedures Cover Page	Task Action: FLIGHT CHECK	Task Type: IAP	Estimated Chart Date: 10/02/2025	APWS Task ID: 06B9AC9EC0A24854995F2BBFCD0030EB	APWS Project ID: 00635F1B4D0640CFA1DAA2BEEBEC54EE
Procedure: RNAV (GPS) RWY 36 AMDT 1		Enroute: NO	Specialist: Smart, Phillip		Agreement Number:
Airport ID: KGRE			Airport City: GREENVILLE		State: IL
Facility ID:	Facility Type:	Flight Inspection Remark Type: New FC Slot			

Procedure Comments:
FULL AMENDMENT

ACTIVE AIRPORT DATA USED.

CONTACT ROBERT HAMILTON 405-954-4608. FEDERAL AVIATION ADMINISTRATION.

08/13/25: THIS IS A CORRECTED COPY OF THE FORM APPROVED ON 08/04/25.

1. CHANGED PROFILE LINE 2 FROM "HOLD S HODAN, RT, 001.73 INBOUND, 2300 FT. IN LIEU OF PT (IAF), MAX 4000." TO "HOLD S HODAN, RT, 001.73 INBOUND, 3000 IN LIEU OF PT (IAF), MAX 4000."
2. REMOVED CHART CIRCLING ICON.



OLD

GREENVILLE, ILLINOIS

AL-5503 (FAA)

24361

WAAS CH 73038 W36A	APP CRS 002°	Rwy Idg 4002 TDZE 540 Apt Elev 541
--	------------------------	---

RNAV (GPS) RWY 36

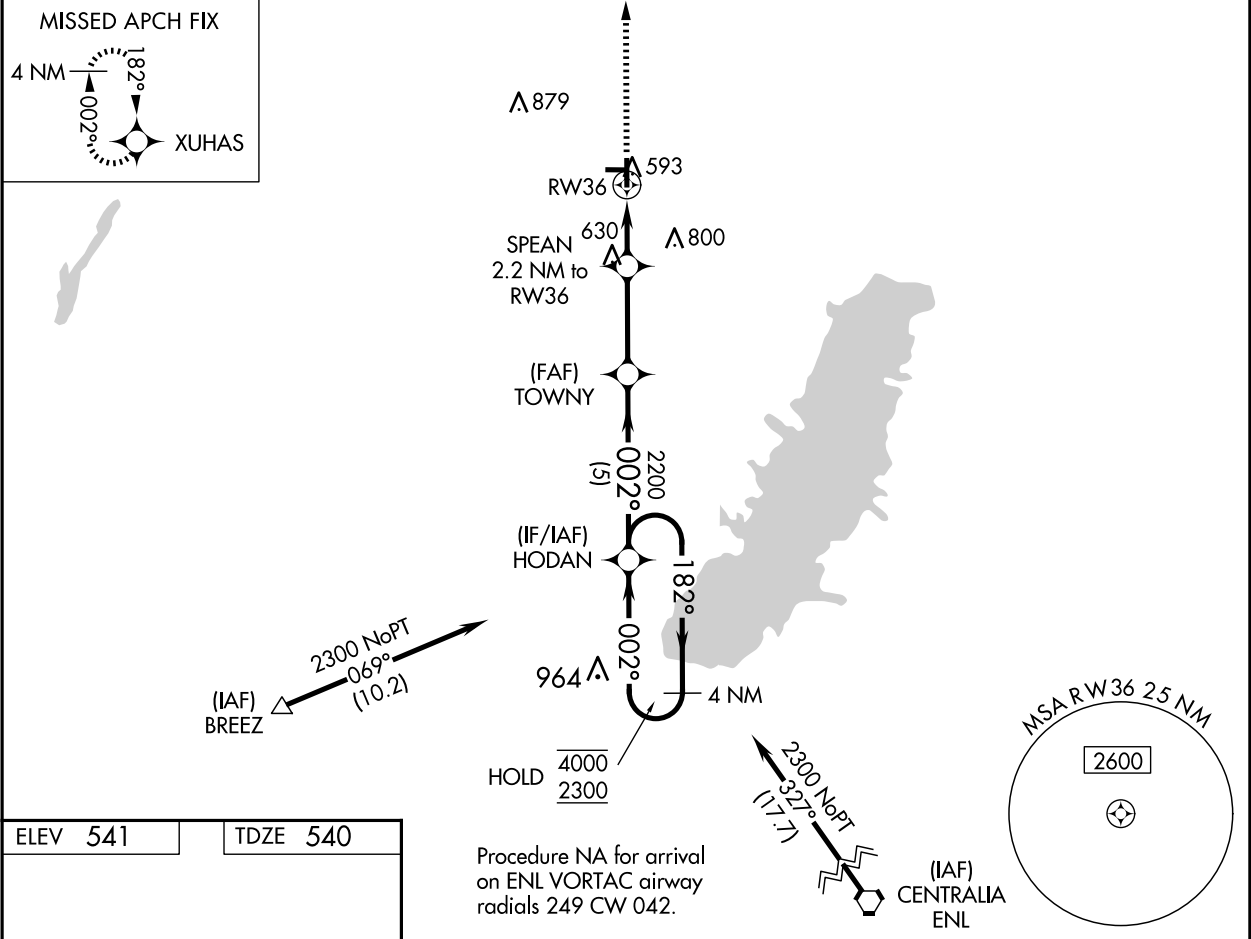
GREENVILLE (GRV)

RNP APCH - GPS.

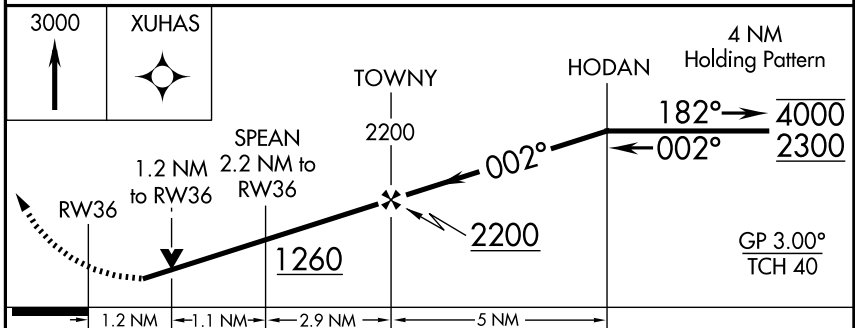
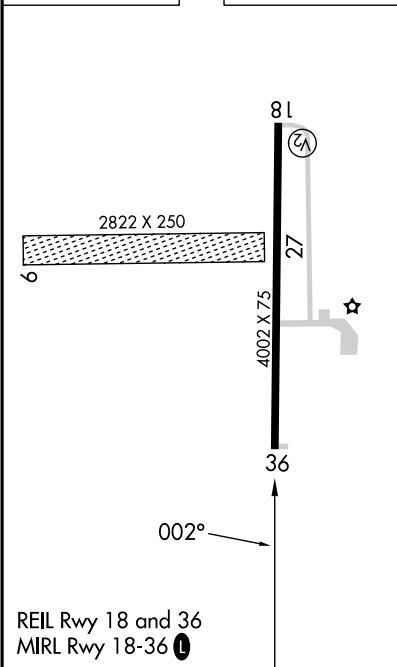
▼ Rwy 36 helicopter visibility reduction below 3/4 SM NA. Circling NA to Rwys 9 and 27. Procedure NA at night. For uncompensated Baro-VNAV systems, LNAV/VNAV NA below -16°C or above 54°C. When local altimeter setting not received, use Salem altimeter setting and increase LPV DA to 910 feet; increase LNAV/VNAV DA to 904 feet; increase all MDAs 60 feet and LNAV visibility Cat C/D 1/4 SM, and Circling visibility Cat D 1/4 SM. Baro-VNAV and VDP NA when using Salem altimeter setting.

MISSED APPROACH:
Climb to 3000 direct XUHAS and hold.

AWOS-AV 123.05	KANSAS CITY CENTER 124.3 269.15	UNICOM 123.05 (CTAF) 0
--------------------------	---	----------------------------------



ELEV 541 TDZE 540



CATEGORY	A	B	C	D
LPV DA		853-1	313 (400-1)	
LNAV/VNAV DA		847-1	307 (400-1)	
LNAV MDA	940-1	400 (400-1)	940-1 1/8	400 (400-1 1/8)
CIRCLING	980-1 439 (500-1)	1000-1 459 (500-1)	1220-2 679 (700-2)	1240-2 1/4 699 (700-2 1/4)

EC-3, 23 JAN 2025 to 20 FEB 2025

EC-3, 23 JAN 2025 to 20 FEB 2025

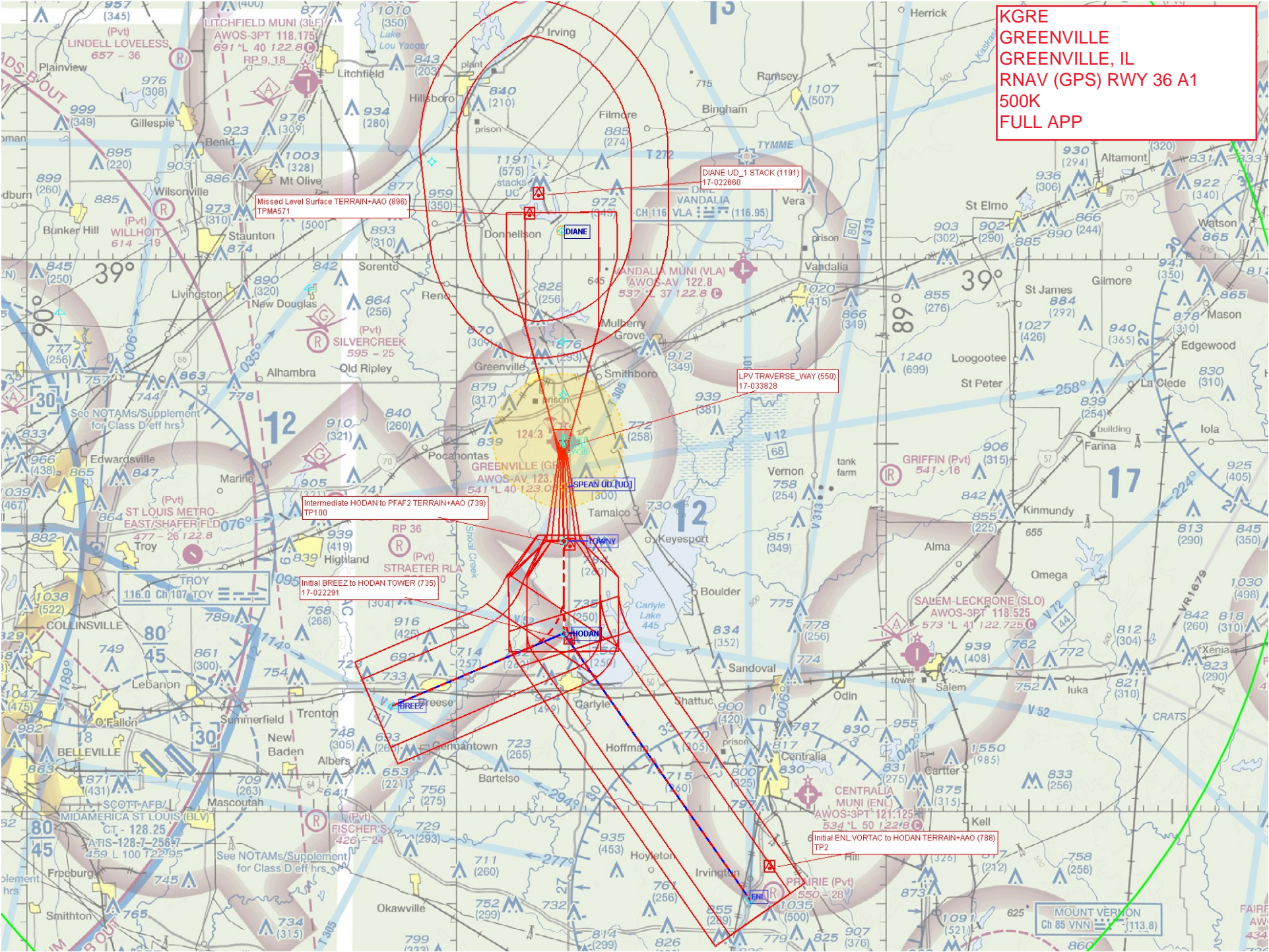
GREENVILLE, ILLINOIS
Orig-B 25JAN24

38°50'N-89°23'W

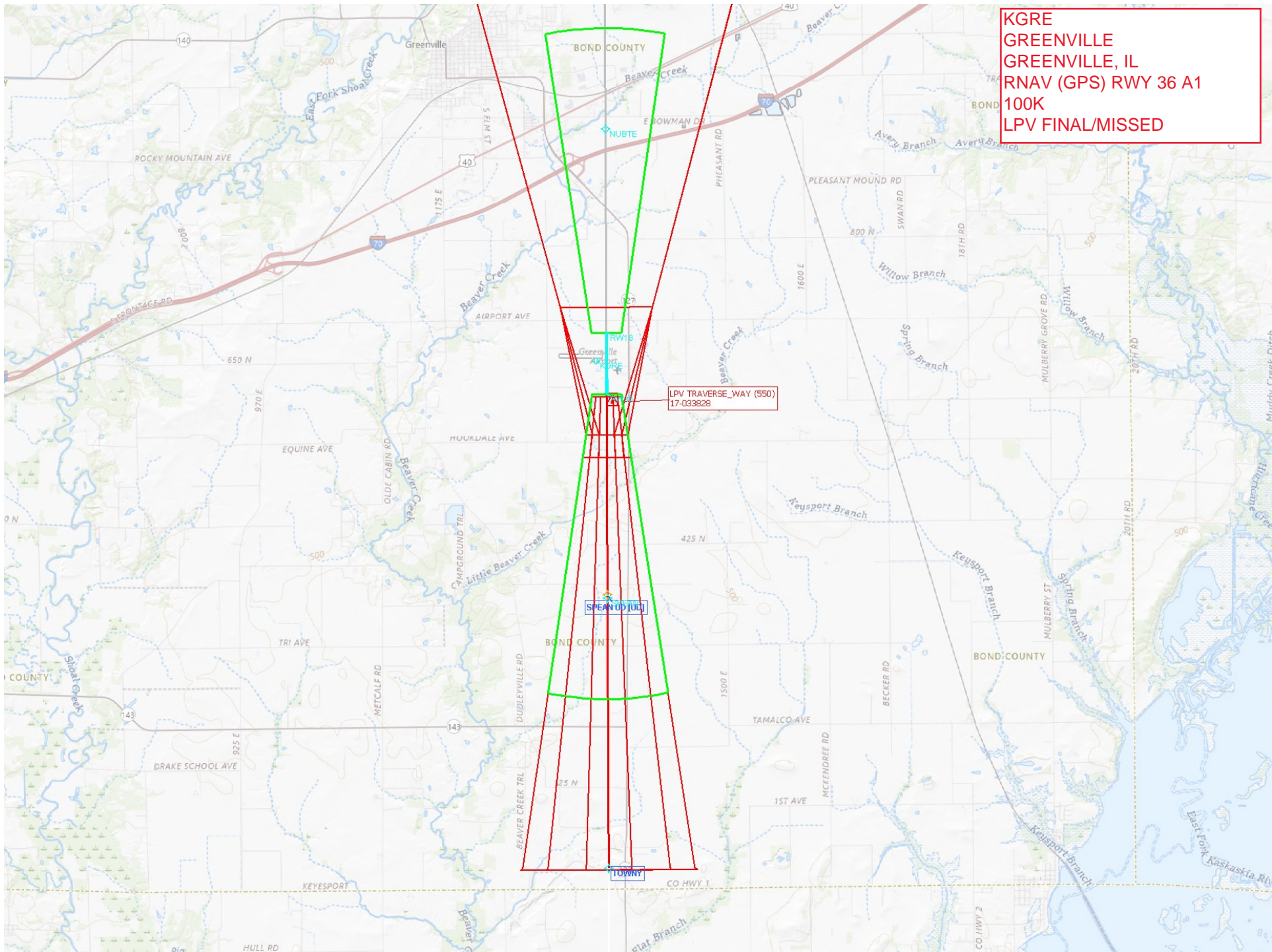
GREENVILLE (GRV)

RNAV (GPS) RWY 36

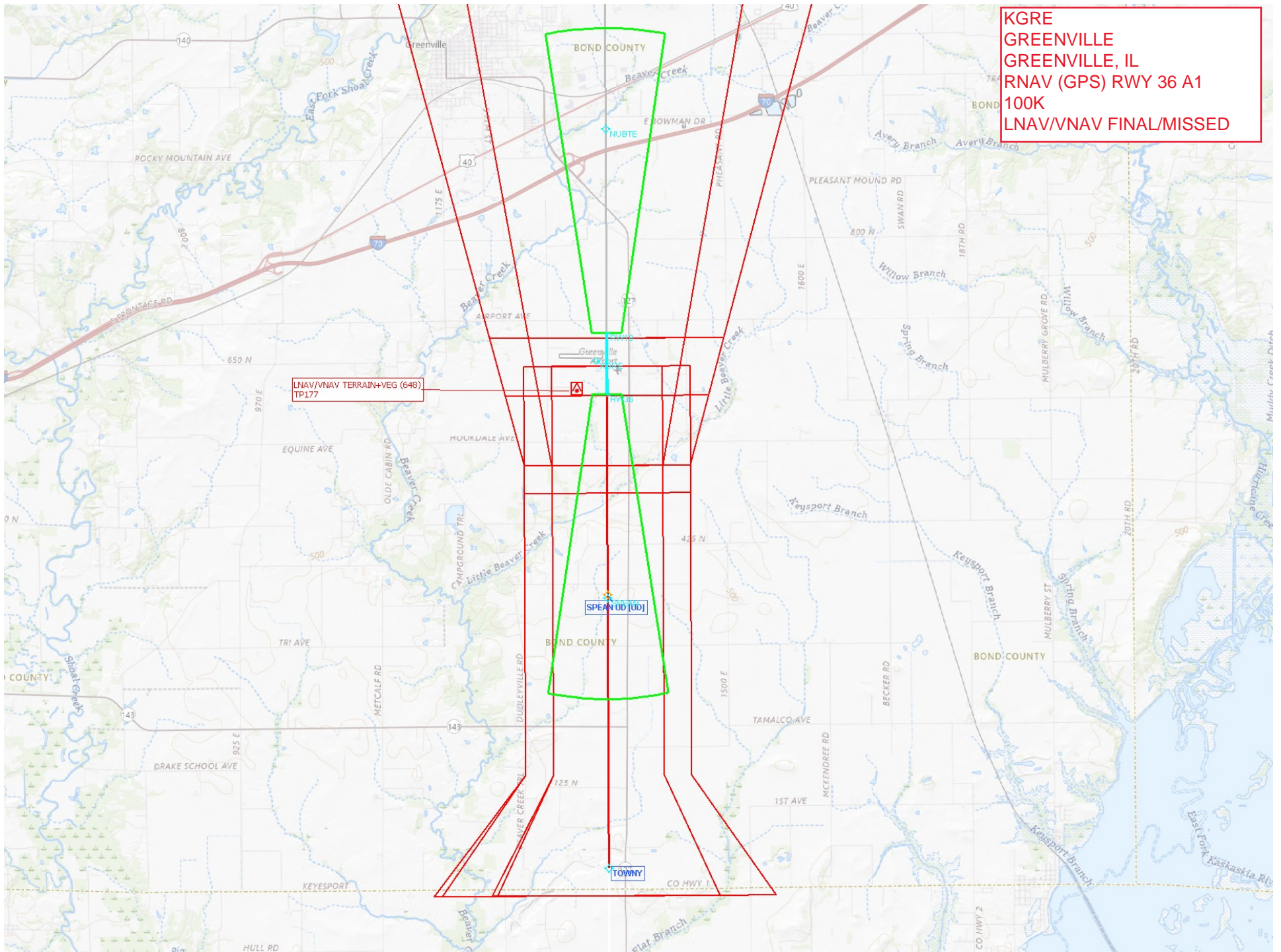
KGRE
GREENVILLE
GREENVILLE, IL
RNAV (GPS) RWY 36 A1
500K
FULL APP



KGRE
GREENVILLE
GREENVILLE, IL
RNAV (GPS) RWY 36 A1
100K
LPV FINAL/MISSED



KGRE
GREENVILLE
GREENVILLE, IL
RNAV (GPS) RWY 36 A1
100K
LNAV/VNAV FINAL/MISSED

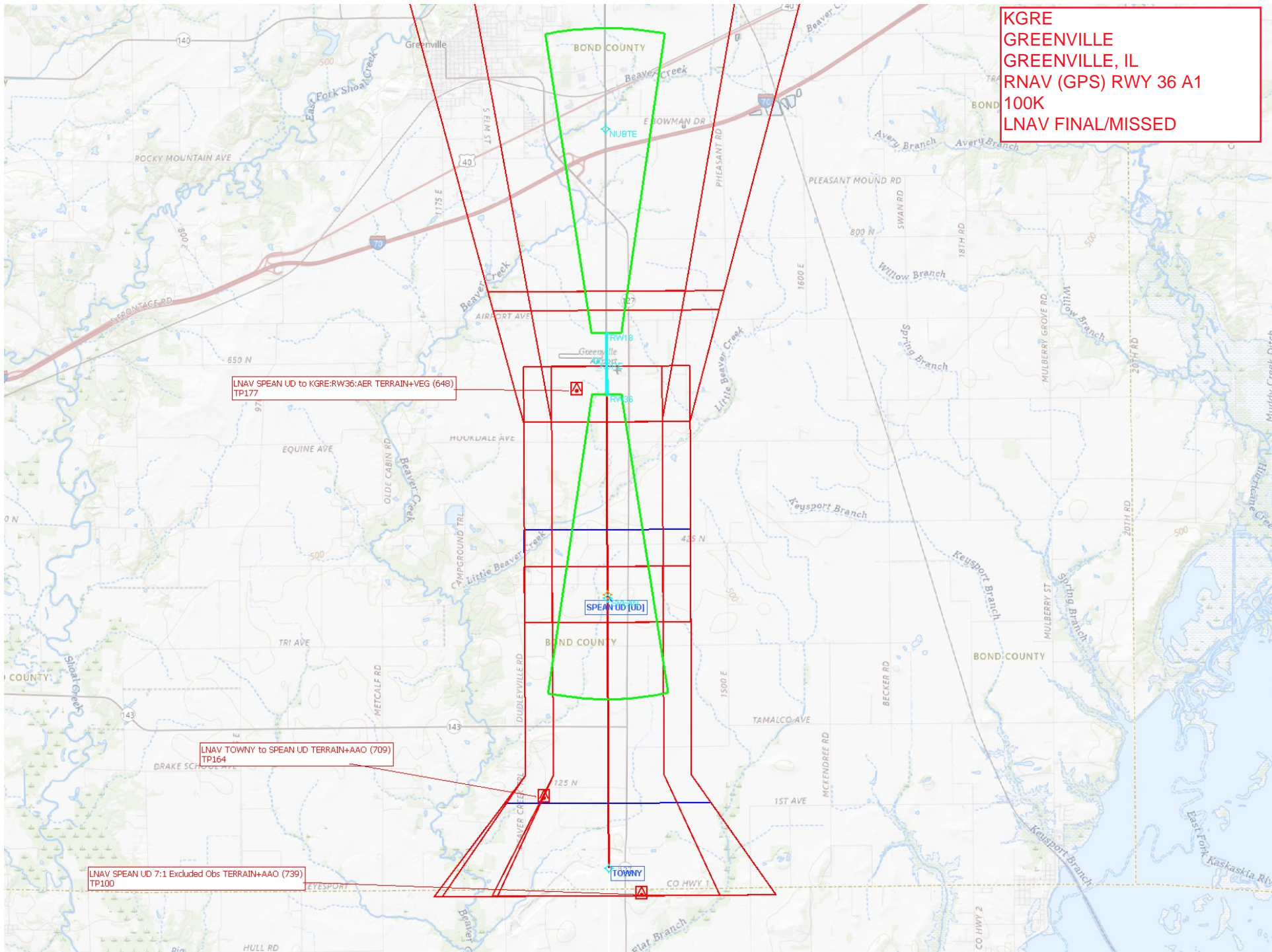


LNAV/VNAV TERRAIN+VEG (648)
TP177

SPEANUD (UD)

TOWNY

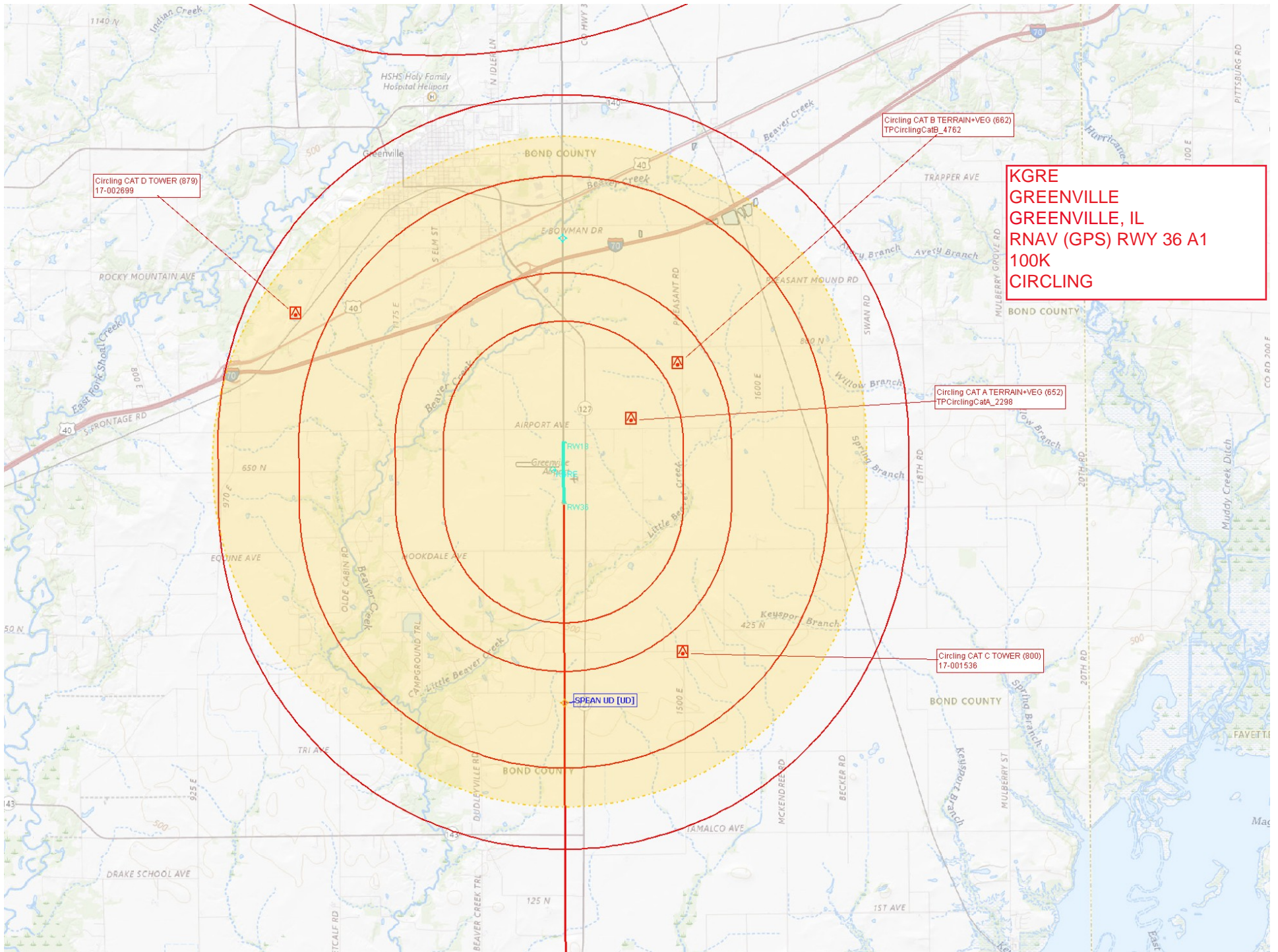
KGRE
GREENVILLE
GREENVILLE, IL
RNAV (GPS) RWY 36 A1
100K
LNAV FINAL/MISSED



LNAV SPEAN UD to KGRE:RW36:AER TERRAIN+VEG (648)
TP177

LNAV TOWNY to SPEAN UD TERRAIN+AAO (709)
TP164

LNAV SPEAN UD 7:1 Excluded Obs TERRAIN+AAO (739)
TP100



Circling CAT D TOWER (879)
17-002699

Circling CAT B TERRAIN+VEG (662)
TPCirclingCatB_4762

**KGRE
GREENVILLE
GREENVILLE, IL
RNAV (GPS) RWY 36 A1
100K
CIRCLING**

Circling CAT A TERRAIN+VEG (652)
TPCirclingCata_2298

Circling CAT C TOWER (800)
17-001536

SPEAN UD [UD]