

Flight Procedures Cover Page	Task Action: P-NOTAM	Task Type: IAP	Estimated Chart Date: 05/16/2024	APWS Task ID: 06CC44536A104EEB94D95C738E9F6DC4	APWS Project ID: 5E71C33A8DE64471A2E527D81A64808D
Procedure: VOR/DME OR TACAN RWY 31 AMDT 7C		Enroute: NO	Specialist: Dumar, Ralph		Agreement Number:
Airport ID: KGGG			Airport City: LONGVIEW		State: TX
Facility ID:	Facility Type:	Flight Inspection Remark Type:			

Procedure Comments:
 PROCESSED IAW TECHNICAL SUPPORT GROUP (AJF-17) MEMO DATED 07/07/2021 GUIDANCE FOR PROCEDURAL CHANGES REQUIRING FLIGHT INSPECTION/VALIDATION

REMARKS: GGG AI PORTAL INQUIRY.
 CONTACT RAKE MCGRAW (405) 954-8711



VORTAC GGG 112.9 Chan 76	APP CRS 306°	Rwy Idg TDZE Apt Elev	9200 354 365
---------------------------------------	------------------------	-----------------------------	---



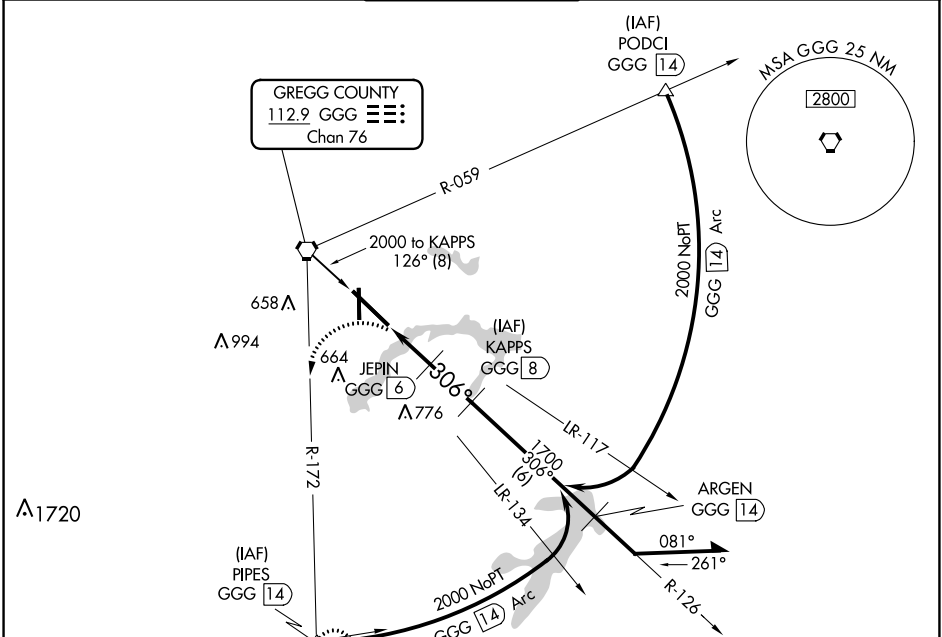
VOR/DME or TACAN Rwy 31

EAST TEXAS RGNL (GGG)

⚠ When local altimeter setting not received, use Gilmer altimeter setting and increase all MDA 60 feet and increase S-31 Cats C/D/E and Circling Cats C/D/E visibility ½ SM. VDP NA when using Gilmer altimeter setting.

MISSED APPROACH: Climb to 800, then climbing left turn to 2500 via GGG R-172 to PIPES INT and hold.

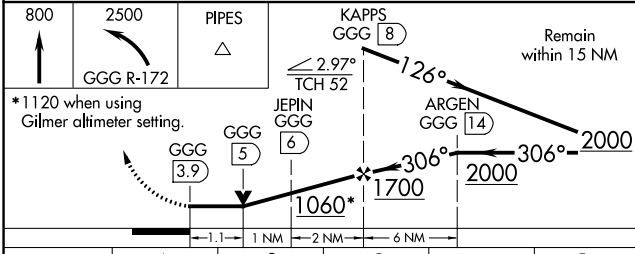
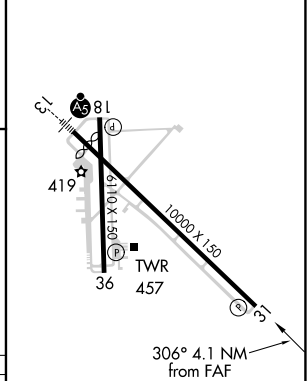
ATIS 119.65	LONGVIEW APP CON* 128.75 379.15	EASTEX TOWER* 119.2 (CTAF) 377.05	GND CON 121.6	UNICOM 122.95
-----------------------	---	---	-------------------------	-------------------------



SC-2, 30 NOV 2023 to 28 DEC 2023

SC-2, 30 NOV 2023 to 28 DEC 2023

ELEV 365	D	TDZE 354
----------	----------	----------



CATEGORY	A	B	C	D	E
S-31	780-1 426 (500-1)		780-1 1/8 426 (500-1 1/8)		
CIRCLING	860-1 495 (500-1)		980-1 3/4 614 (700-1 3/4)	1080-2 1/4 714 (800-2 1/4)	1080-2 1/2 715 (800-2 1/2)

HIRL Rwy 13-31 **1**
MIRL Rwy 18-36