

RNAV (GPS) RWY 25

HERLONG RECREATIONAL (KHEG)

WAAS CH XXXX XXX	APP CRS 251°	Rwy Idg 4001 TDZE 86 APT Elev 86
------------------------	------------------------	---

RNP APCH - GPS.

MISSED APPROACH: CLIMB TO 2000 DIRECT WODKU AND ON TRACK 304.03 TO REDIE AND HOLD.

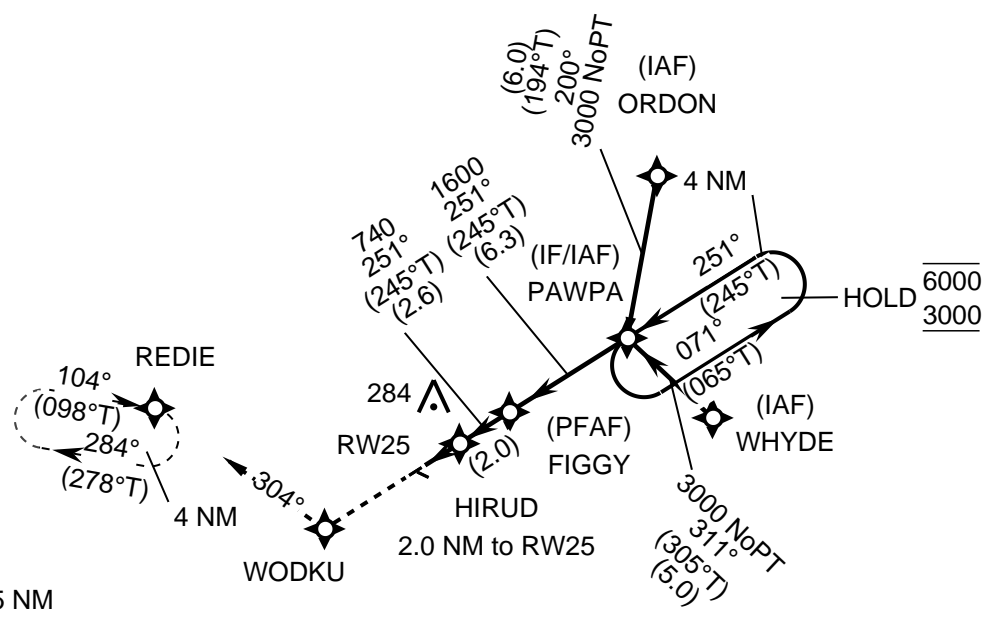
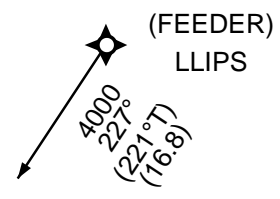
FOR UNCOMPENSATED BARO-VNAV SYSTEMS, LNAV/VNAV NA BELOW -15°C OR ABOVE 54°C. RWY 25 HELICOPTER VISIBILITY REDUCTION BELOW 3/4 SM NOT AUTHORIZED. CIRCLING RWY 11, 29 NA

AT NIGHT. BARO-VNAV AND VDP NA WHEN USING VQQ ALTIMETER SETTING. WHEN LOCAL ALTIMETER SETTING NOT RECEIVED, USE VQQ ALTIMETER SETTING AND INCREASE LPV DA TO 394

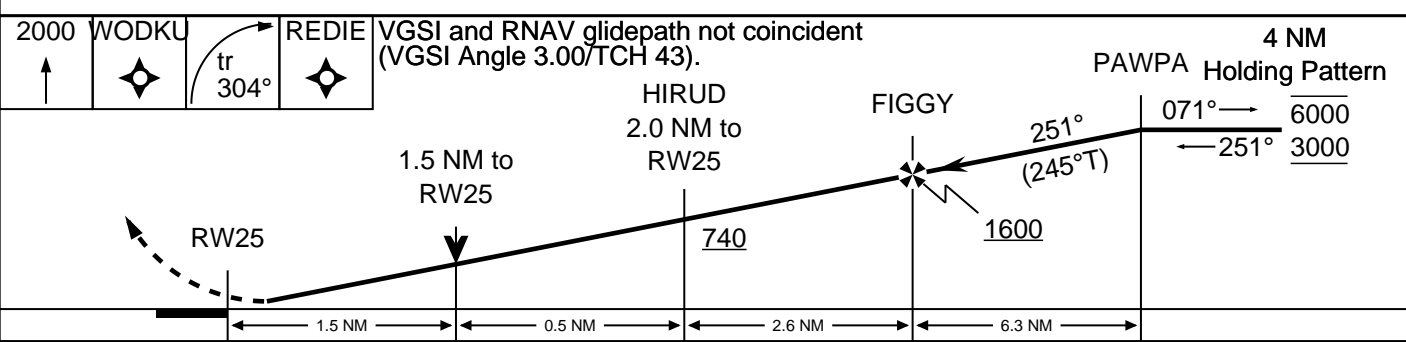
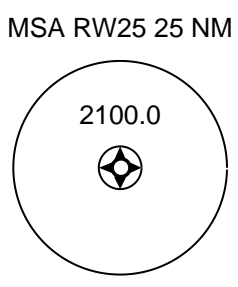
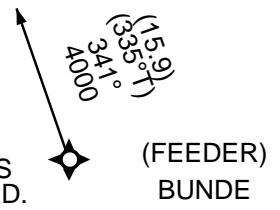
FEET; INCREASE LNAV/VNAV DA TO 616 FEET AND ALL VISIBILITIES 1/8 SM; INCREASE ALL MDA AND LNAV VISIBILITY CAT C/D 1/8 SM

PROTOTYPE-NOT FOR NAVIGATION

PROCEDURE NA FOR ARRIVALS AT LLIPS ON V1 NORTHEAST BOUND AND ON V3 NORTHBOUND.



PROCEDURE NA FOR ARRIVALS AT BUNDE ON V51 SOUTHBOUND.



CATEGORY	A	B	C	D
LPV	378-7/8 292			
LNAV/VNAV	600-1 3/8 514			
LNAV	600-1 514		600-1 3/8 514	
CIRCLING	600-1 514		980-2 3/4 894	980-3 894