

Flight Procedures Cover Page	Task Action: FLIGHT CHECK	Task Type: IAP	Estimated Chart Date: 09/03/2026	APWS Task ID: 073FE7DBA47D40758EBDD0BDB0F18F17	APWS Project ID: 2FAD70FF8AEB486290679753CA7D136A
Procedure: RNAV (GPS) RWY 25 AMDT 1A		Enroute: NO	Specialist: Taylor, Jantzen		Agreement Number:
Airport ID: KHEG			Airport City: JACKSONVILLE		State: FL
Facility ID:	Facility Type:	Flight Inspection Remark Type: New FC Slot			

Procedure Comments:  
CRC REMAINDER CHANGED FROM 03EB5FD3 TO F23D21B0

KMZ FILES:  
MA PENS: KHEG\_RNAV\_(GPS)\_RWY\_25\_AMDT\_1.kmz  
ADJ PROC: KHEG\_RNAV\_(GPS)\_RWY\_25\_AMDT\_1\_1.kmz

ACTIVE DATA USED FOR AIRPORT, PENDING DATA USED FOR RUNWAY.  
CONTACT RAKE MCGRAW: AJV-A422, 405.954.8711.

QUALITY  
9  
CHECKED  
BEGUE

QUALITY  
37  
CHECKED



WAAS CH <b>63026</b> <b>W25A</b>	APP CRS <b>251°</b>	Rwy Idg TDZE Apt Elev	<b>4001</b> <b>86</b> <b>86</b>
--	------------------------	-----------------------------	---------------------------------------

**OLD**

# RNAV (GPS) RWY 25

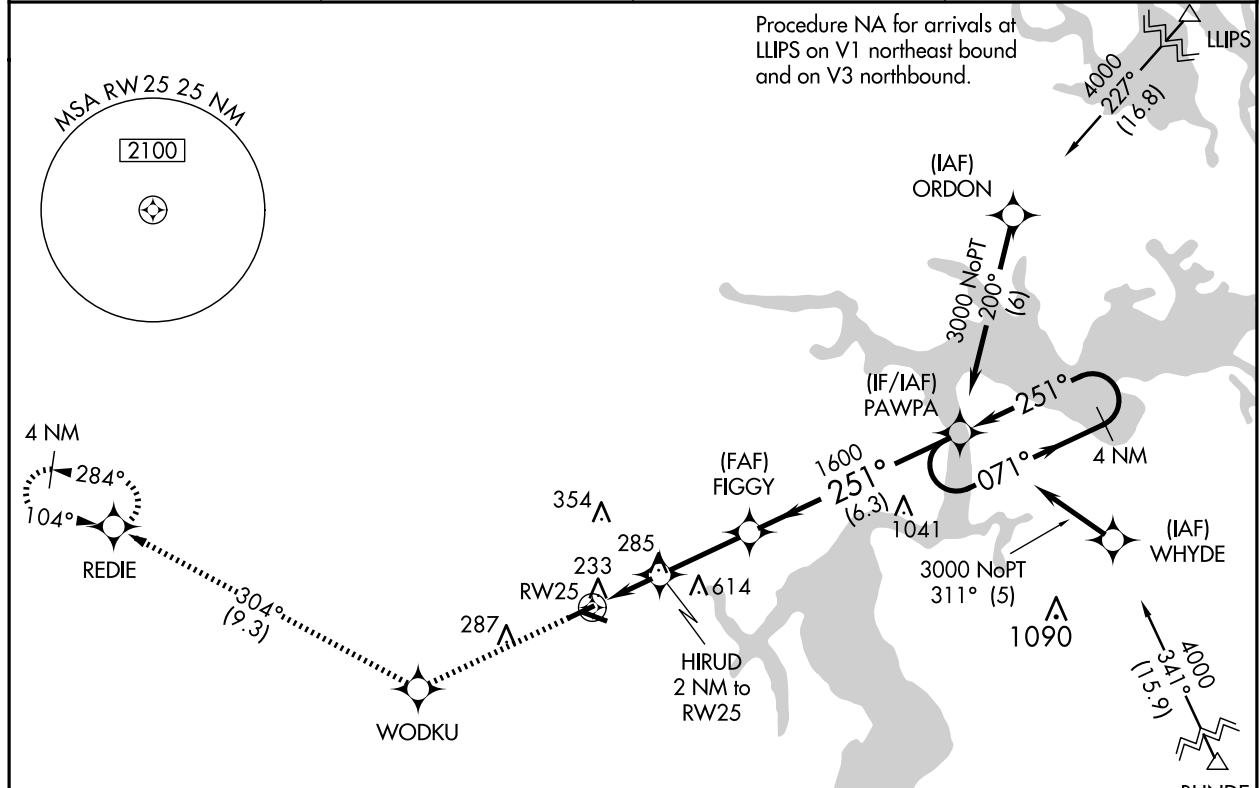
HERLONG RECREATIONAL (HEG)

**▼** Baro-VNAV NA when using Cecil altimeter setting. For uncompensated Baro-VNAV systems, procedure NA below -15°C (5°F) or above 54°C (130°F). DME/DME RNP-0.3 NA.

**▲** NA When local altimeter setting not received, use Cecil altimeter setting: increase all DA 13 feet and all MDA 20 feet; increase LNAV Cat C and D visibility 1/8 mile. Procedure NA at night for Cat C/D aircraft. Night landing: Rwy 7, 11, 29 NA. Helicopter visibility reduction below 3/4 SM NA.

**MISSED APPROACH:** Climb to 2000 direct WODKU and on track 304° to REDIE and hold.

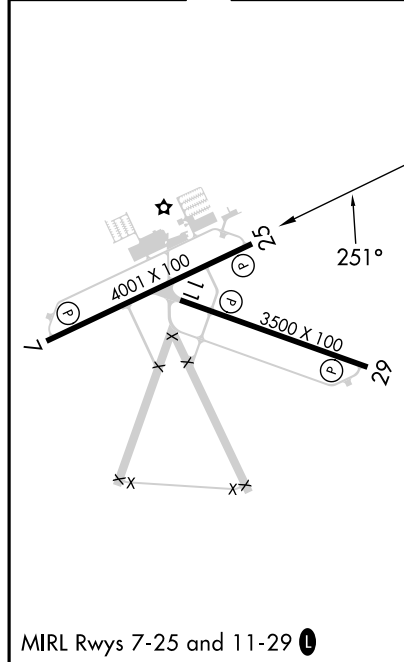
AWOS-3 <b>119.275</b>	JACKSONVILLE APP CON <b>127.775 377.075</b>	GCO <b>121.725</b>	UNICOM <b>123.0 (CTAF)</b>
--------------------------	--	-----------------------	-------------------------------



SE-3, 25 DEC 2025 to 22 JAN 2026

SE-3, 25 DEC 2025 to 22 JAN 2026

ELEV 86	TDZE 86
---------	---------



2000	WODKU	tr	REDIE	4 NM Holding Pattern
*LNAV only.				
	HIRUD 2 NM to RW25	FIGGY 1600	PAWPA	3000
	RW25	*740	1600	GP 3.00° TCH 40
	2 NM	2.7 NM	6.3 NM	
CATEGORY	A	B	C	D
LPV DA	378-1 292 (300-1)			
LNAV/VNAV DA	612-1 526 (600-1)			
LNAV MDA	600-1	514 (600-1)	600-1 514 (600-1)	514 (600-1)
CIRCLING	600-1	514 (600-1)	980-2 894 (900-2)	980-3 894 (900-3)