

Flight Procedures Cover Page	Task Action: P-NOTAM	Task Type: IAP	Estimated Chart Date: 09/05/2024	APWS Task ID: 07D996D7327445F5A9B82E0AE34758B6	APWS Project ID: 6409FDB7BEF84D4B9630A5E6D7104660
Procedure: RNAV (GPS) RWY 5 AMDT 1E		Enroute: NO	Specialist: Hanby, William		Agreement Number:
Airport ID: KCNI			Airport City: CANTON		State: GA
Facility ID:	Facility Type:	Flight Inspection Remark Type:			

Procedure Comments:  
PENDING AIRNAV DATA USED.

PROCESSED IAW TECHNICAL SUPPORT GROUP (AJF-17) MEMO DATED 07/07/2021, SUBJECT: GUIDANCE FOR PROCEDURAL CHANGES REQUIRING FLIGHT INSPECTION VALIDATION.

CONTACT CASIMIR L. TABAKA: (405) 954-9946.

PNOTAM: 4/5661

J ZEDER 03/08/2024



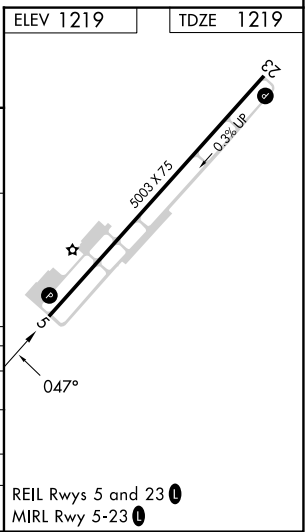
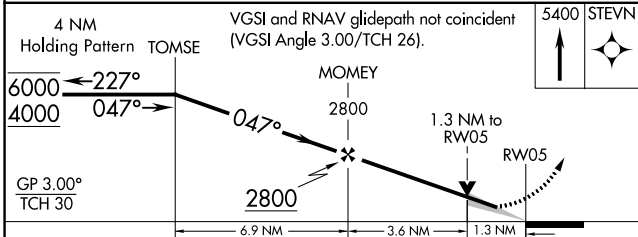
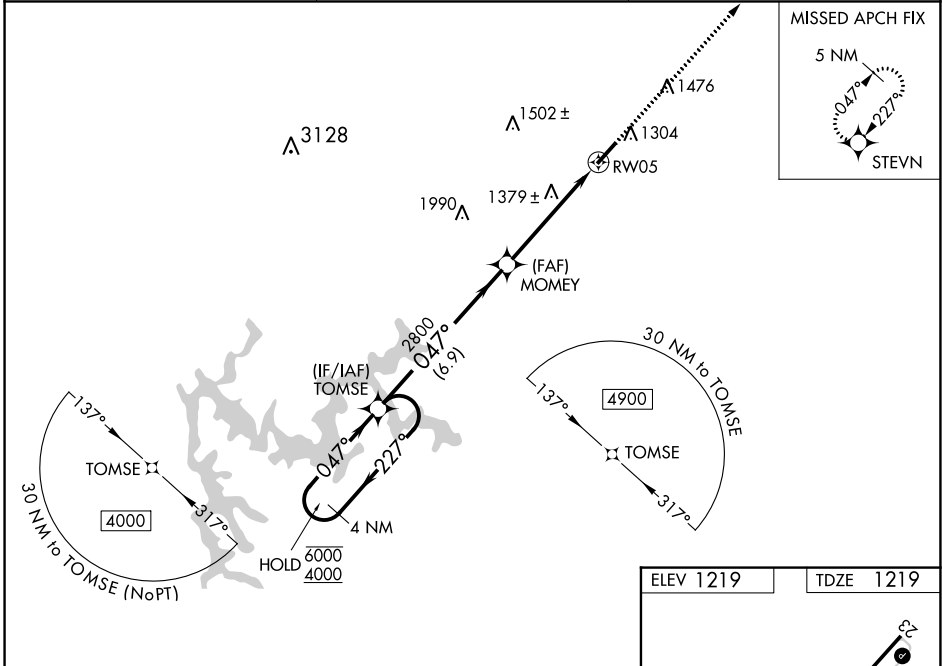
WAAS CH <b>56605</b> <b>W05A</b>	APP CRS <b>047°</b>	Rwy Idg TDZE <b>1219</b> Apt Elev <b>1219</b>	<b>5003</b>
--	------------------------	---	-------------

## RNAV (GPS) RWY 5

CHEROKEE COUNTY RGNL (CNI)

RNP APCH-GPS.	<p>▼ Circling Rwy 23 NA at night. Baro-VNAV and VDP NA when using Marietta altimeter setting. For uncompensated Baro-VNAV systems, LNAV/VNAV NA below -17°C or above 36°C. ▲ When local altimeter setting not received, use Marietta altimeter setting and increase LPV DA to 1546 feet and visibility all Cats 1/8 SM; increase LNAV/VNAV DA to 1631 feet; increase all MDAs 80 feet and LNAV Cats C/D visibility 1/8 SM and Circling Cats C/D visibility 1/4 SM.</p>
MISSED APPROACH: Climb to 5400 direct STEVN and hold, continue climb-in-hold to 5400.	

AWOS-3PT <b>119.825</b>	ATLANTA APP CON <b>121.0 268.7</b>	UNICOM <b>123.0 (CTAF) 0</b>
----------------------------	---------------------------------------	---------------------------------



CATEGORY	A	B	C	D
LPV DA		1469-7/8	250 (300-7/8)	
LNAV/VNAV DA		1554-1 1/8	335 (400-1 1/8)	
LNAV MDA	1640-1	421 (500-1)	1640-1 1/4	421 (500-1 1/4)
CIRCLING	1720-1	501 (600-1)	1820-1 3/4 601 (700-1 3/4)	2040-2 3/4 821 (900-2 3/4)