

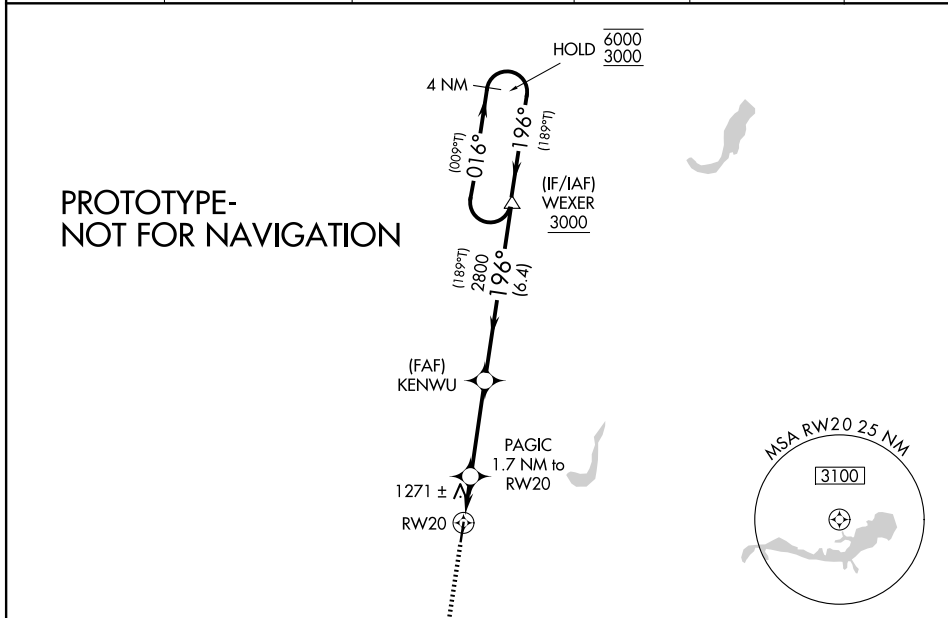
WAAS CH 65701 W20A	APP CRS 196°	Rwy Ldg TDZE 1135 Apt Elev 1135
--	------------------------	---

RNAV (GPS) RWY 20

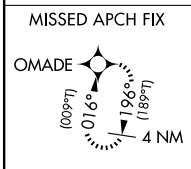
KENT STATE UNIVERSITY (1G3)

RNP APCH - GPS.		MISSED APPROACH: Climb to 3000 direct OMADE and hold.
▽ ▲ NA	Rwy 20 helicopter visibility reduction below 3/4 SM NA. When local altimeter setting not received, use AKR altimeter setting and increase LPV DA to 1473 feet and all visibilities 1/2 SM. Increase all MDAs 40 feet.	

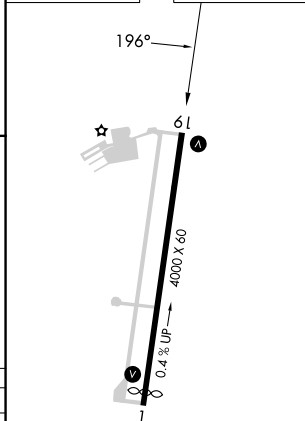
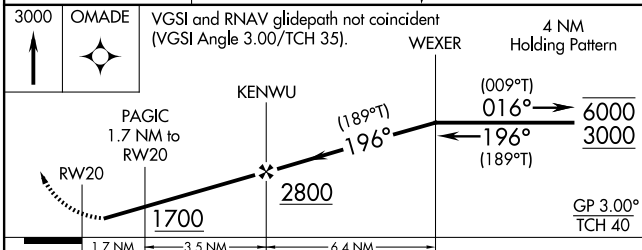
AWOS-2 119.15	AKR ASOS 126.825	CLEVELAND APP CON ★ 125.5 371.875	CLNC DEL 125.65	UNICOM 122.725 (CTAF)	122.9 0
-------------------------	----------------------------	---	---------------------------	---------------------------------	-----------------------



PROTOTYPE-
NOT FOR NAVIGATION



ELEV 1135	TDZE 1135
-----------	-----------



CATEGORY	A	B	C	D
LPV DA	1443-7/8	308 (400-7/8)		NA
LNAV MDA	1580-1	445 (500-1)	1580-1 3/8 445 (500-1 3/8)	NA

MIRA Rwy 2-20 **0**
REIL Rwy 2 and 20 **0**