

Flight Procedures Cover Page	Task Action: Cancellation	Task Type: IAP	Estimated Chart Date: 01/22/2026	APWS Task ID: 0C71C62D688D44CD852ACF87EE0532D8	APWS Project ID: 7DBEAD1E13A647398E7E9580F3FABFD6
Procedure: COPTER RNAV (GPS) 074 AMDT 0A		Enroute: NO	Specialist: Smart, Phillip		Agreement Number:
Airport ID: P96			Airport City: JERSEY SHORE		State: PA
Facility ID:	Facility Type:	Flight Inspection Remark Type:			

Procedure Comments:
PENDING AIRNAV DATA USED.

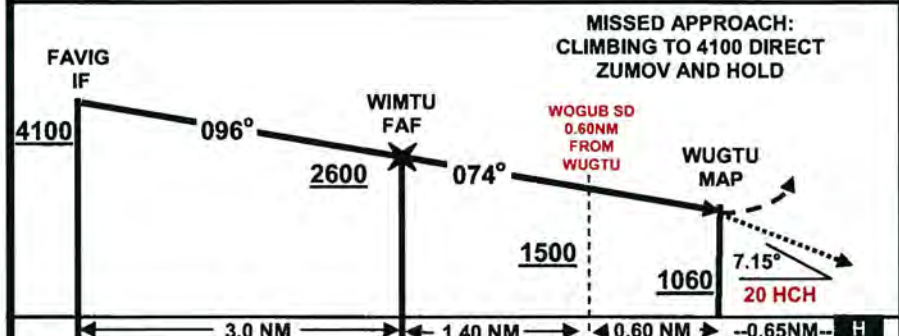
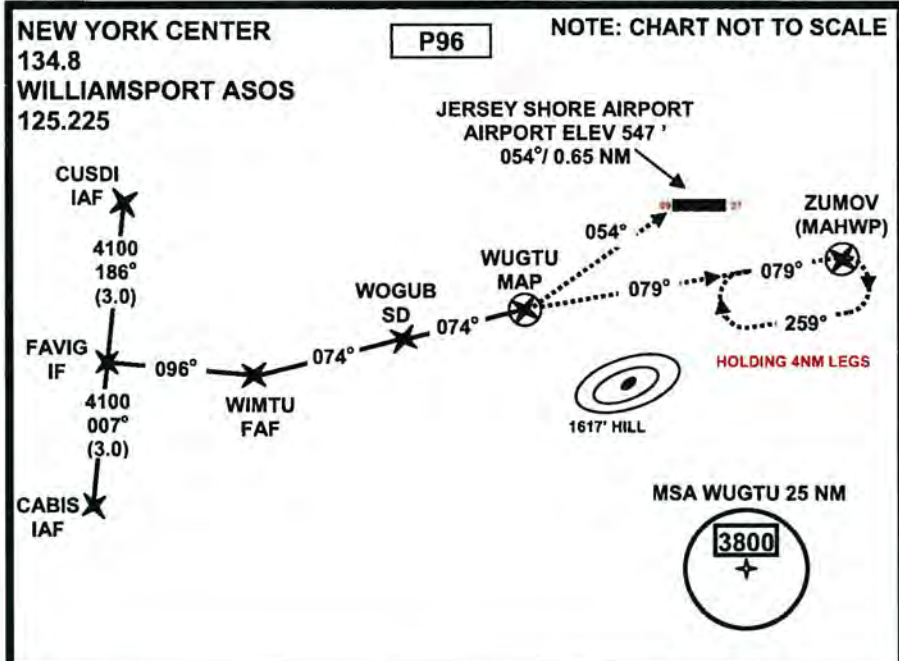
CONTACT CASEY HILL (405) 954-0624. FEDERAL AVIATION ADMINISTRATION.



CANCEL

COPTER RNAV (GPS) 074

14 MAY 09 JERSEY SHORE AIRPORT (P96)
JERSEY SHORE, PENNSYLVANIA

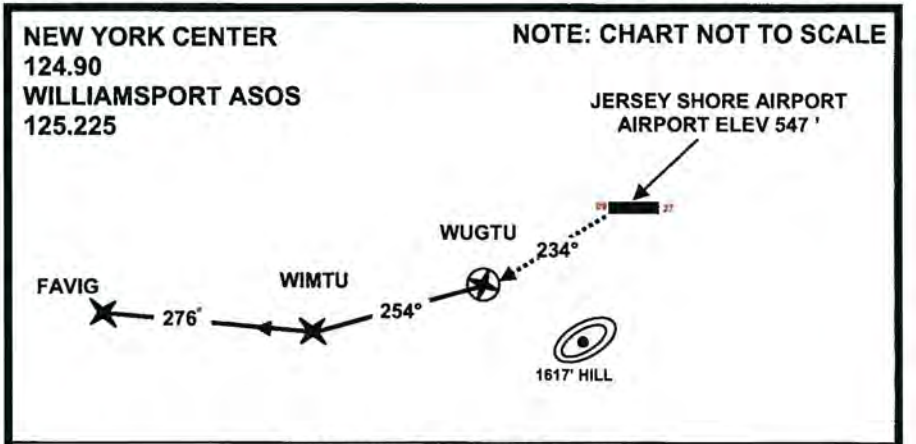


CATEGORY	COPTER
H-074	1060 - 3/4 HAL 493'

LIMIT FINAL AND MISSED APPROACH AIRSPEED TO 70 KIAS.
USE: WILLIAMSPORT ALTIMETER SETTING.
PROCEED VISUALLY FROM WUGTU OR CONDUCT THE SPECIFIED MISSED APPROACH
VISUAL SEGMENT PLANNED TO A 20' HOVER.
ACTIVATE LIRLS RWY 9/27 CTAF (122.9)
▲ N/A

COPTER RNAV (GPS) 254 DEPARTURE (PILOT NAV)

JERSEY SHORE AIRPORT (P96)
JERSEY SHORE, PENNSYLVANIA



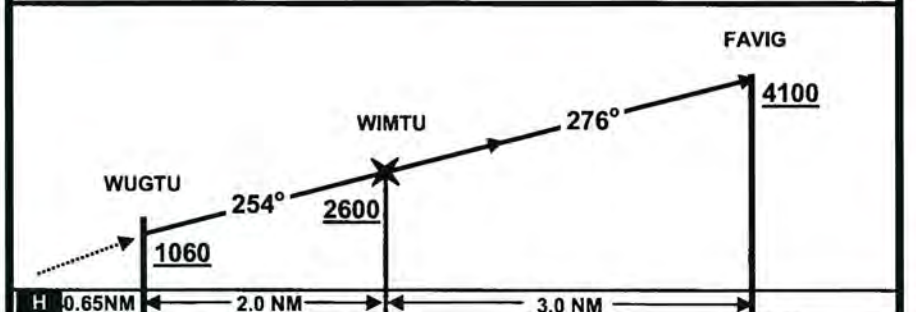
DEPARTURE ROUTE DESCRIPTION

Visual Segment: Depart VISUALLY. Track Course **234°**. Climb at minimum 759 ft/NM to cross WUGTU at or above 1060' prior to entering IMC.

IFR Segment: Track course **254°** Climb at minimum 770 ft/NM to cross WUGTU at or above 2600'. Track course **276°** Climb at minimum 500 ft/NM to cross FAVIG at or above 4100'.

* Copter RNAV 254 Departure NOT Authorized with less than 500' ceiling and 3/4 mile visibility.

* Pilot MUST enter route and manually select 0.3 NM CDI sensitivity prior to departure.



SEGMENT	REQUIRED CLIMB (FT/NM)	GROUND SPEED (KNOTS)			
		50	60	70	80
HRP-MAP	759	633	759	886	1012
MAP-FAF	770	642	770	898	1027
FAF-IWP	500	417	500	583	667