

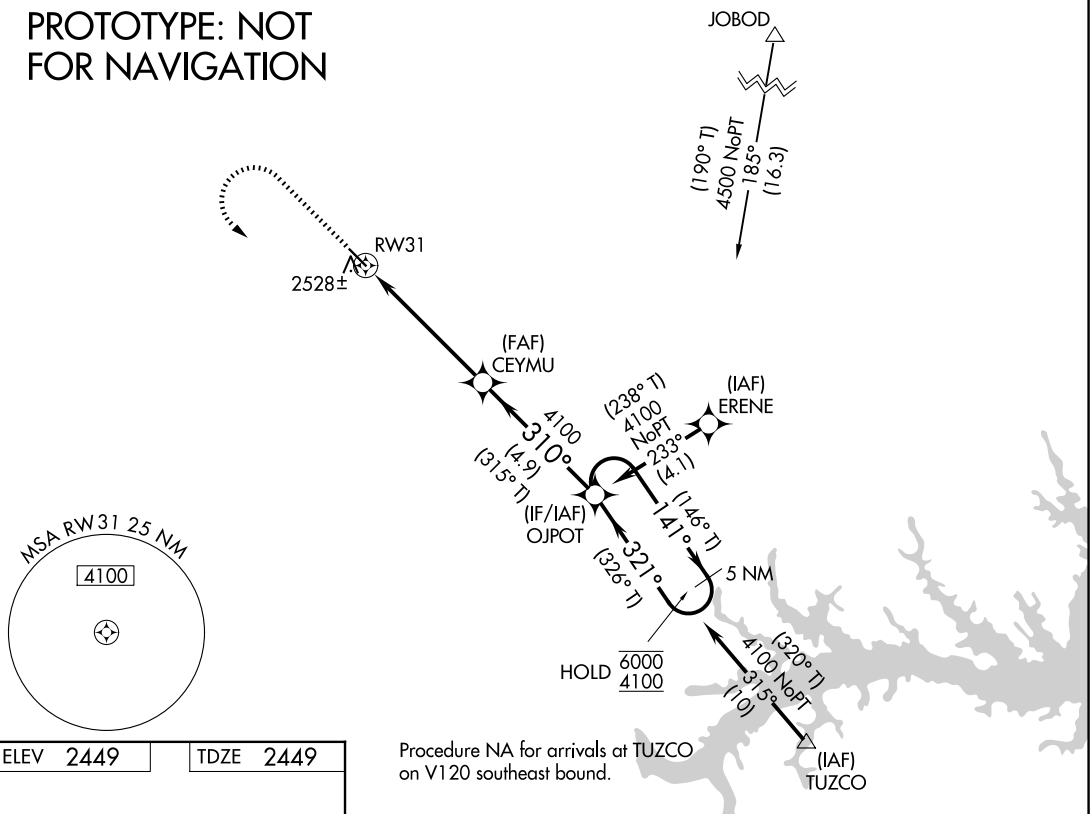
WAAS CH 69647 W31A	APP CRS 310°	Rwy Ldg TDZE 2449 Apt Elev 2449
--	------------------------	---

RNAV (GPS) RWY 31

CHEYENNE EAGLE BUTTE (84D)

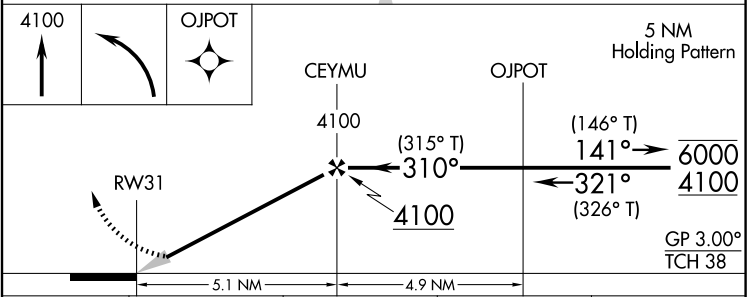
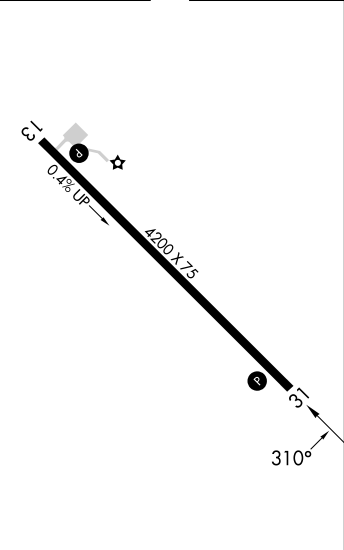
RNP APCH - GPS.		MISSED APPROACH: Climb to 4100 then turn left direct OJPOT and hold.
▼ Baro-VNAV NA ▲ NA Use PIR altimeter setting.	PIR ASOS 119.025	MINNEAPOLIS CENTER 135.25 256.7
		UNICOM 122.8 (CTAF) 0

PROTOTYPE: NOT FOR NAVIGATION



Procedure NA for arrivals at TUZCO on V120 southeast bound.

ELEV 2449	TDZE 2449
------------------	------------------



CATEGORY	A	B	C	D
LPV DA	2928-1 ³ / ₈	479 (500-1 ³ / ₈)		NA
LNAV/VNAV DA	2928-1 ³ / ₈	479 (500-1 ³ / ₈)		NA
LNAV MDA	3020-1	571 (600-1)		NA
CIRCLING	3240-1	791 (800-1)		NA

MIRL Rwy 13-31 0

AUTOMATED AL-9031 RNAV (GPS) RWY 31

NC-1
28 JAN 2026
COMPILER: CG
REVIEWER:
DBL CHKR:
EFF: FIG