

RNAV (GPS) RWY 24

GALLATIN COUNTY (K8GK)

APP CRS 242°
 Rwy ldg 5000
 TDZE 824
 APT Elev 830

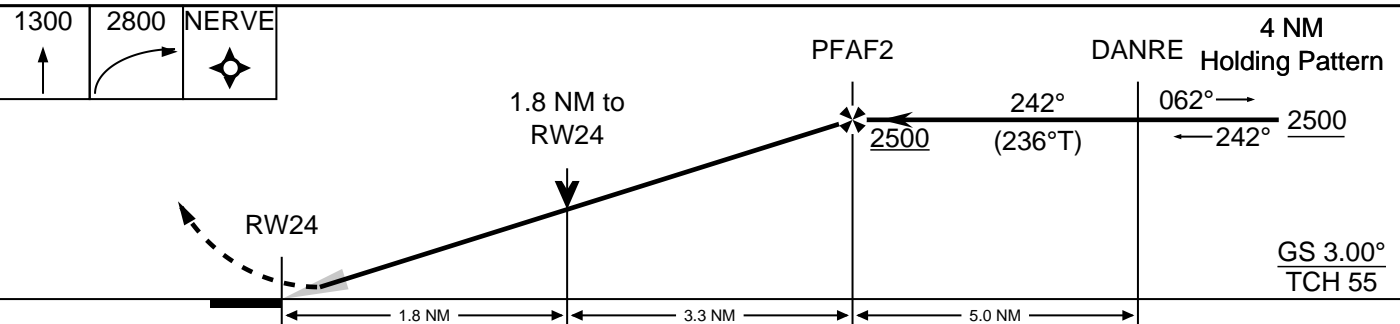
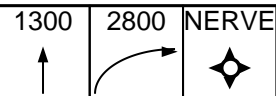
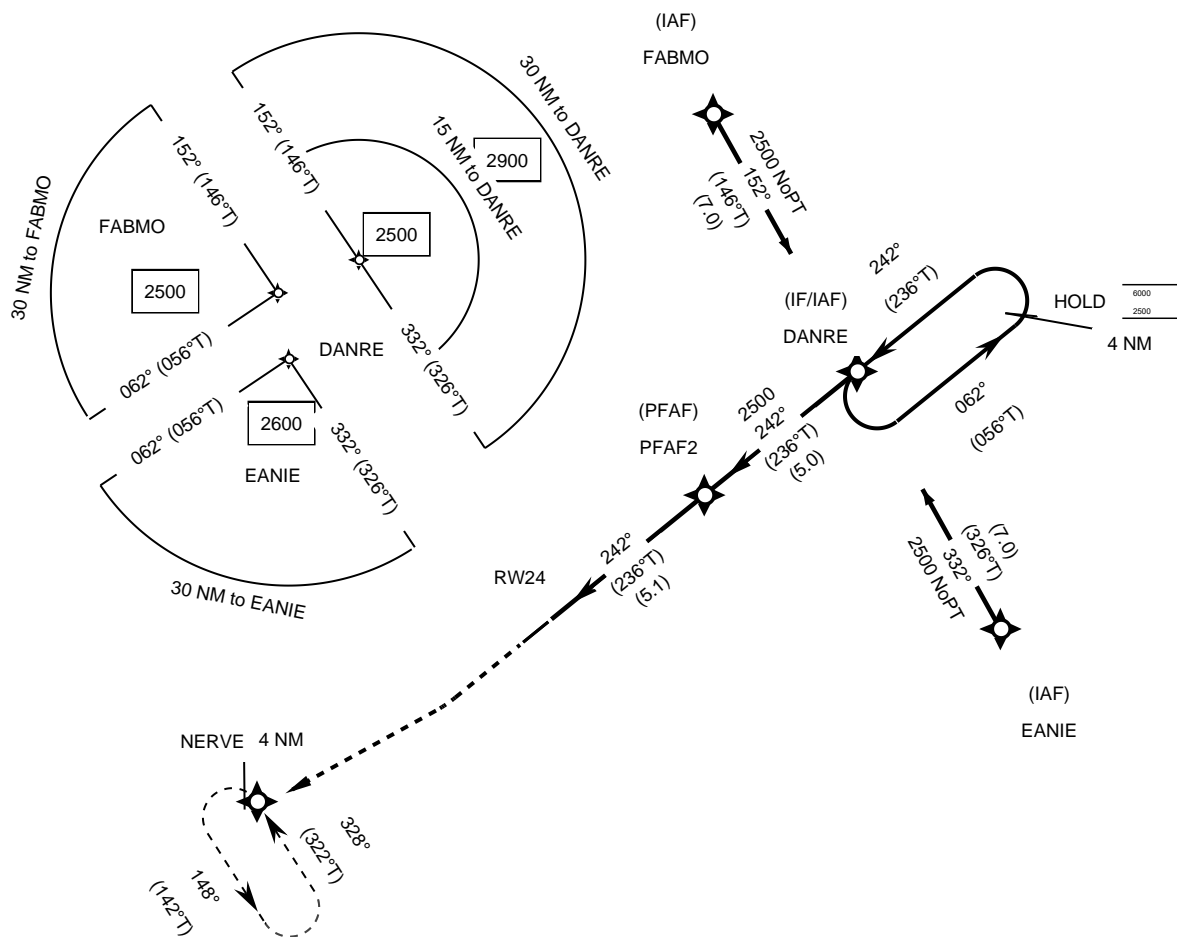
RNP APCH - GPS.

MISSED APPROACH: CLIMB TO 1300 THEN CLIMBING RIGHT TURN TO 2800 DIRECT NERVE AND HOLD.

~~PROCEDURE NA AT NIGHT.~~ VDP NA WHEN USING IMS ALTIMETER SETTING. WHEN LOCAL ALTIMETER SETTING NOT RECEIVED, USE IMS ALTIMETER SETTING AND INCREASE ALL MDAS 80 FEET AND LNAV VISIBILITY CAT C 1/4 SM, AND CIRCLING VISIBILITY CAT C 1/2 SM.

APP CON 126.65	CTAF 122.9	AWOS-3P 11.9.15
-------------------	---------------	--------------------

PROTOTYPE-NOT FOR NAVIGATION



CATEGORY	A	B	C	D
LNAV	1460-1 636		1460-1 3/4 636	NA
CIRCLING	1460-1 630	1500-1 670	1500-1 3/4 670	NA