

FEDERAL AVIATION ADMINISTRATION
 FLIGHT STANDARDS SERVICE
 STANDARD TERMINAL ARRIVAL (STAR)

Bearings, headings, courses, tracks and radials are magnetic. Elevations and altitudes are in feet, MSL. Altitudes are minimum altitudes unless otherwise indicated.
 Ceilings are in feet above airport elevation. Distances are in nautical miles. Visibilities are in statute miles or feet RVR unless otherwise indicated.

Arrival Name STOCR (RNAV)	Number FIVE	STAR Computer Code FLLGG.STOCR5	Superseded Number FOUR	Dated 05/16/2024	Effective Date
-------------------------------------	-----------------------	---	----------------------------------	----------------------------	----------------

TRANSITION ROUTES:

Transition Name	Transition Computer Codes	From FIX/NAVAID	To FIX/NAVAID	Course	Distance	MEA	MOCA	MAA	Crossing Altitudes / Fixes
CHECR	CHECR.STOCR5	CHECR	CHECR						
			CHVEE	035.69	59.51	FL180	2700		
			CRVET	036.04	08.46	FL180	2700		BETWEEN FL240 AND FL290
			FLLGG	036.07	20.00	FL180	2700		BETWEEN FL210 AND FL230
CHARLESTON	CHS.STOCR5	CHS VORTAC	CHS VORTAC						
			MOPPR	009.33	41.51	FL180	2700		
			CHRGR	009.35	13.00	FL180	2700		BETWEEN FL240 AND FL290
			FLLGG	009.35	12.00	FL180	2700		BETWEEN FL210 AND FL230
PITRW	PITRW.STOCR5	PITRW	PITRW						
			FFORD	353.71	53.09	FL180	3100		
			SHLBI	348.04	13.62	FL180	2700		BETWEEN FL240 AND FL290
			FLLGG	347.99	12.00	FL180	2700		BETWEEN FL210 AND FL230

ARRIVAL ROUTE DESCRIPTION:

FROM FLLGG ON TRACK 340.93/26.94 TO CROSS FFNSH BETWEEN 16000 AND FL230 AND AT 280 KIAS, THEN ON TRACK 340.79/13.14 TO CROSS STOCR BETWEEN 12000 AND FL190 AND AT 270 KIAS.

LANDING RWY 1L, 36C/R: FROM STOCR ON TRACK 328.53/6.36 TO CROSS FIBBR BETWEEN 11000 AND 14000 AND AT 250 KIAS, THEN ON TRACK 328.02/9.47 TO CROSS TYMER BETWEEN 8000 AND 11000, THEN ON TRACK 327.85/6.38 TO CROSS TERIE BETWEEN 6000 AND 8000, THEN ON TRACK 264.53/4.44 TO CROSS GATEE AT 6000 AND AT 210 KIAS, THEN ON TRACK 273.00. EXPECT RADAR VECTORS TO FINAL APPROACH COURSE.

LANDING RWY 18L/C, 19R: FROM STOCR ON TRACK 328.55/8.07 TO CROSS LLAPP BETWEEN 12000 AND 16000 AND AT 270 KIAS, THEN ON TRACK 327.96/10.44 TO CROSS ZYMKO BETWEEN 11000 AND 13000 AND AT 250 KIAS, THEN ON TRACK 326.96/13.31 TO CROSS DOOMY BETWEEN 10000 AND 11000 AND AT 250 KIAS, THEN ON TRACK 325.83/5.44 TO POORE, THEN ON TRACK 002.91/3.74 TO CROSS LEEKS AT 10000 AND AT 210 KIAS, THEN ON TRACK 003.05/10.13 TO HANDO, THEN ON TRACK 003.05. EXPECT RADAR VECTORS TO FINAL APPROACH COURSE.

PBN REQUIREMENT NOTES:

RNAV 1 - DME/DME/IRU OR GPS

EQUIPMENT REQUIREMENT NOTES:

RADAR REQUIRED

PROCEDURAL DATA NOTES:

NOTE: JET AIRCRAFT ONLY

NOTE: LANDING SOUTH USE RWY 18L TRANSITION, LANDING NORTH USE RWY 36R TRANSITION. EXPECT RUNWAY ASSIGNMENT FROM CLT APPROACH.

NOTE: JET AIRCRAFT DESCEND VIA MACH NUMBER UNTIL 280 KIAS, IF UNABLE, ADVISE ATC.

FIXES AND/OR HOLDING PATTERNS:

CHART HOLDING AT FLLGG: HOLD SW, RT, 036.07 INBOUND, 10 NM LEGS.

CHART HOLDING AT STOCR: HOLD S, LT, 340.79 INBOUND, 10 NM LEGS.



FEDERAL AVIATION ADMINISTRATION
FLIGHT STANDARDS SERVICE
STANDARD TERMINAL ARRIVAL (STAR)

Bearings, headings, courses, tracks and radials are magnetic. Elevations and altitudes are in feet, MSL. Altitudes are minimum altitudes unless otherwise indicated.
Ceilings are in feet above airport elevation. Distances are in nautical miles. Visibilities are in statute miles or feet RVR unless otherwise indicated.

Arrival Name	Number	STAR Computer Code	Superseded Number	Dated	Effective Date
STOCR (RNAV)	FIVE	FLLGG.STOCR5	FOUR	05/16/2024	

REASONS:

1. PHASE ONE OF THE CHARLOTTE AIRPORT RUNWAY RENUMBERING PROJECT.
2. APPROACH CONTROL AUTOMATICALLY CHARTED AND DOES NOT NEED TO BE DOCUMENTED IN THIS SECTION IAW 8260.19K 4-5-12F.
3. CURRENT DOCUMENTATION STANDARDS.
- 4-5. NEW OBSTACLE EVALUATION.

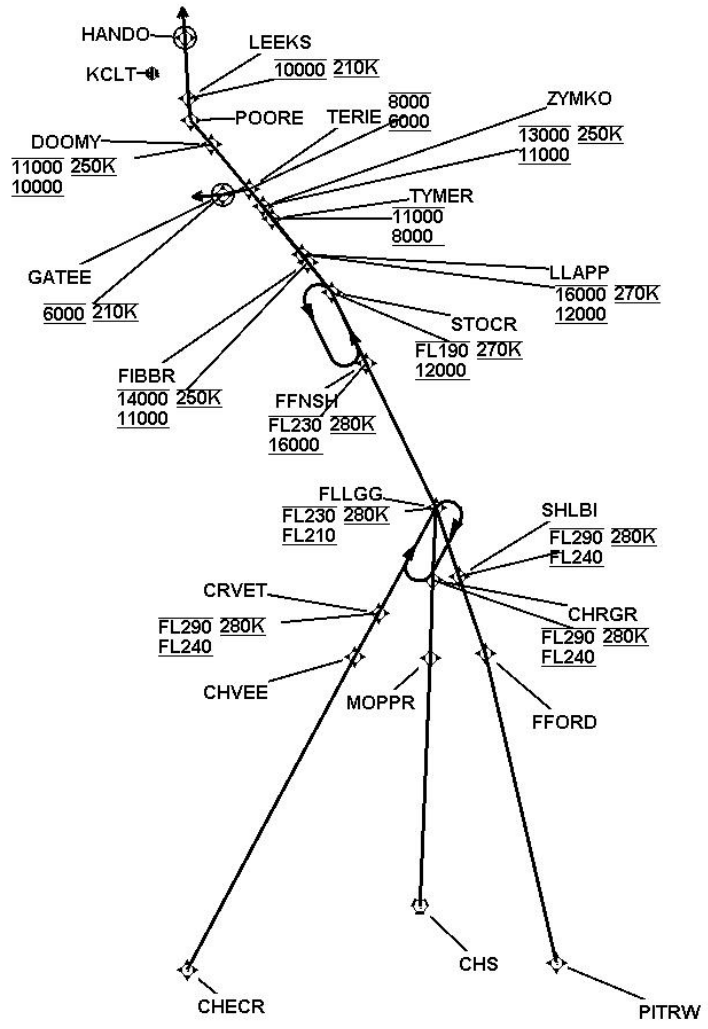


FEDERAL AVIATION ADMINISTRATION
 FLIGHT STANDARDS SERVICE
 STANDARD TERMINAL ARRIVAL (STAR)

Bearings, headings, courses, tracks and radials are magnetic. Elevations and altitudes are in feet, MSL. Altitudes are minimum altitudes unless otherwise indicated.
 Ceilings are in feet above airport elevation. Distances are in nautical miles. Visibilities are in statute miles or feet RVR unless otherwise indicated.

Arrival Name	Number	STAR Computer Code	Superseded Number	Dated	Effective Date
STOCR (RNAV)	FIVE	FLLGG.STOCR5	FOUR	05/16/2024	

Graphic Depiction 1

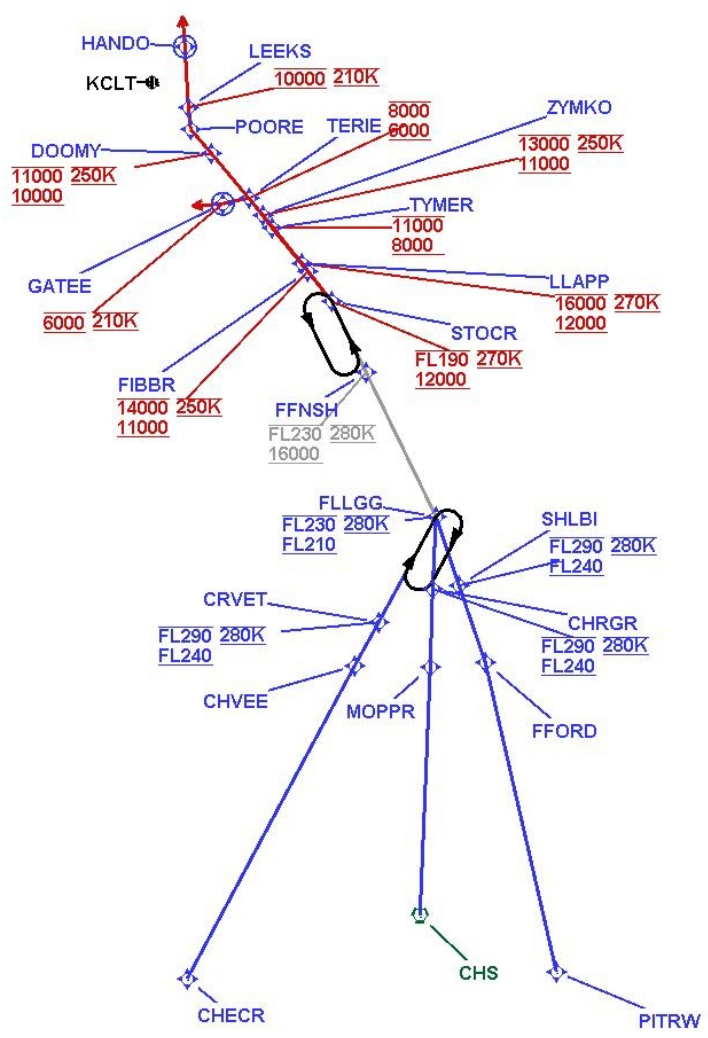


FEDERAL AVIATION ADMINISTRATION
 FLIGHT STANDARDS SERVICE
 STANDARD TERMINAL ARRIVAL (STAR)

Bearings, headings, courses, tracks and radials are magnetic. Elevations and altitudes are in feet, MSL. Altitudes are minimum altitudes unless otherwise indicated.
 Ceilings are in feet above airport elevation. Distances are in nautical miles. Visibilities are in statute miles or feet RVR unless otherwise indicated.

Arrival Name	Number	STAR Computer Code	Superseded Number	Dated	Effective Date
STOCR (RNAV)	FIVE	FLLGG.STOCR5	FOUR	05/16/2024	

Graphic Depiction 2



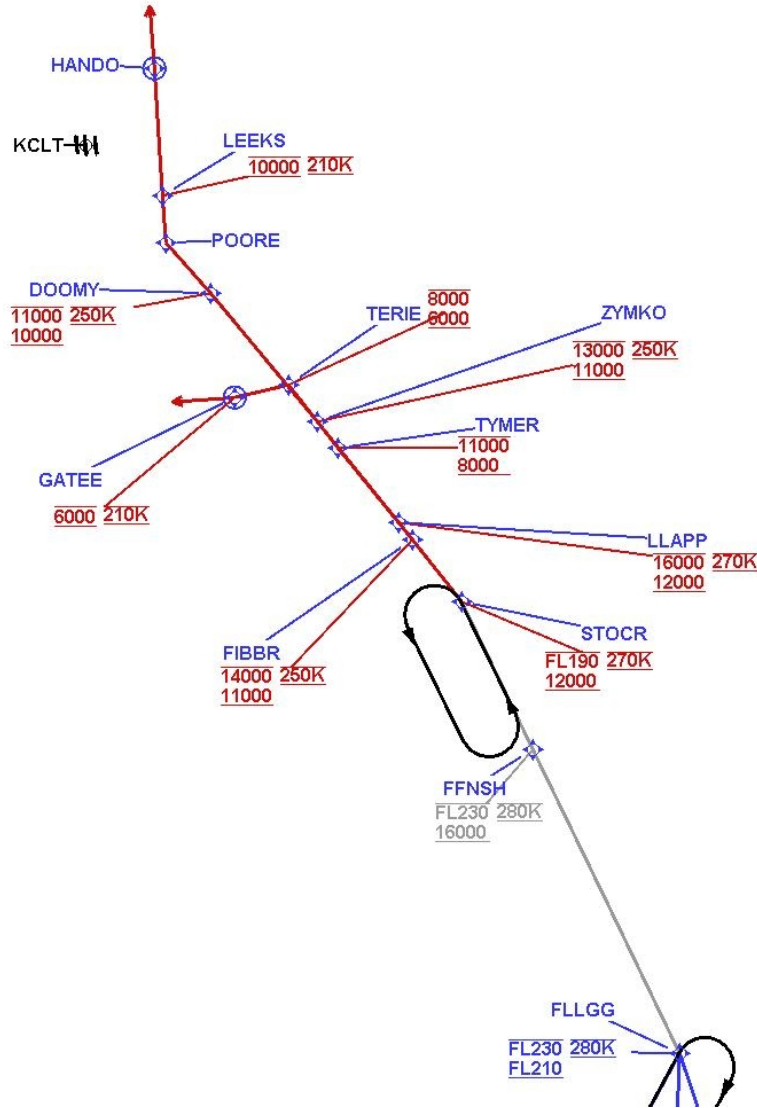
GLM

FEDERAL AVIATION ADMINISTRATION
 FLIGHT STANDARDS SERVICE
 STANDARD TERMINAL ARRIVAL (STAR)

Bearings, headings, courses, tracks and radials are magnetic. Elevations and altitudes are in feet, MSL. Altitudes are minimum altitudes unless otherwise indicated.
 Ceilings are in feet above airport elevation. Distances are in nautical miles. Visibilities are in statute miles or feet RVR unless otherwise indicated.

Arrival Name	Number	STAR Computer Code	Superseded Number	Dated	Effective Date
STOCR (RNAV)	FIVE	FLLGG.STOCR5	FOUR	05/16/2024	

Graphic Depiction 3



FEDERAL AVIATION ADMINISTRATION
 FLIGHT STANDARDS SERVICE
 STAR (DATA RECORD)

Arrival Name STOCR (RNAV)	Number FIVE	STAR Computer Code FLLGG.STOCR5		Superseded Number FOUR	Dated 05/16/2024	Effective Date			
FIX/NAVAID	LAT/LONG	C	FO/FB	LEG TYPE	TC	DIST (NM)	ALTITUDE	SPEED	REMARKS
En Route Transition									
CHECR	324305.66N / 0804949.73W	Y		IF					CHECR.STOCR5
CHVEE	333519.41N / 0801537.84W	Y	FB	TF	028.69	59.51			
CRVET	334244.13N / 0801042.37W	Y	FB	TF	029.04	08.46	FL240BFL290	AT 280K	
FLLGG	340014.29N / 0795901.01W	Y	FB	TF	029.07	20.00	FL210BFL230	AT 280K	
En Route Transition									
CHS VORTAC	325339.55N / 0800216.13W	Y		IF					CHS.STOCR5
MOPPR	333512.84N / 0800014.94W	Y	FB	TF	002.33	41.51			
CHRGR	334813.61N / 0795936.59W	Y	FB	TF	002.35	13.00	FL240BFL290	AT 280K	
FLLGG	340014.29N / 0795901.01W	Y	FB	TF	002.35	12.00	FL210BFL230	AT 280K	
En Route Transition									
PITRW	324413.05N / 0793423.27W	Y		IF					PITRW.STOCR5
FFORD	333558.43N / 0794900.29W	Y	FB	TF	346.71	53.09			
SHLBI	334852.41N / 0795418.96W	Y	FB	TF	341.04	13.62	FL240BFL290	AT 280K	
FLLGG	340014.29N / 0795901.01W	Y	FB	TF	340.99	12.00	FL210BFL230	AT 280K	
Common Route									
FLLGG	340014.29N / 0795901.01W	Y		IF			FL210BFL230	AT 280K	FLLGG.STOCR5
FFNSH	342427.90N / 0801319.62W	Y	FB	TF	333.93	26.94	16000BFL230	AT 280K	
STOCR	343616.16N / 0802021.46W	Y	FB	TF	333.79	13.14	12000BFL190	AT 270K	
Runway Transition									
STOCR	343616.16N / 0802021.46W	Y		IF			12000BFL190	AT 270K	
FIBBR	344115.39N / 0802509.38W	Y	FB	TF	321.53	06.36	11000B14000	AT 250K	
TYMER	344837.60N / 0803223.41W	Y	FB	TF	321.02	09.47	8000B11000		
TERIE	345334.94N / 0803717.31W	Y	FB	TF	320.85	06.38	6000B8000		



FEDERAL AVIATION ADMINISTRATION
 FLIGHT STANDARDS SERVICE
 STAR (DATA RECORD)

Arrival Name STOCR (RNAV)	Number FIVE	STAR Computer Code FLLGG.STOCR5		Superseded Number FOUR		Dated 05/16/2024	Effective Date		
<u>FIX/NAVAID</u>	<u>LAT/LONG</u>	<u>C</u>	<u>FO/FB</u>	<u>LEG TYPE</u>	<u>TC</u>	<u>DIST (NM)</u>	<u>ALTITUDE</u>	<u>SPEED</u>	<u>REMARKS</u>
GATEE	345237.24N / 0804233.31W	Y	FO	TF	257.53	04.44	AT 6000	AT 210K	
KCLT:RWY 1L,RWY 36C,RWY 36R				FM	266.00				
Runway Transition									
STOCR	343616.16N / 0802021.46W	Y		IF			12000BFL190	AT 270K	
LLAPP	344235.98N / 0802626.80W	Y	FB	TF	321.55	08.07	12000B16000	AT 270K	
ZYMKO	345043.17N / 0803426.34W	Y	FB	TF	320.96	10.44	11000B13000	AT 250K	
DOOMY	350055.10N / 0804451.72W	Y	FB	TF	319.96	13.31	10000B11000	AT 250K	
POORE	350501.34N / 0804913.73W	Y	FB	TF	318.83	05.44			
LEEKs	350845.38N / 0804933.24W	Y	FB	TF	355.91	03.74	AT 10000	AT 210K	
HANDO	351852.58N / 0805024.44W	Y	FO	TF	356.05	10.13			
KCLT:RWY 18C,RWY 18L,RWY 19R				FM	356.05				

