

Flight Procedures Cover Page	Task Action: FLIGHT CHECK	Task Type: STAR	Estimated Chart Date: 05/14/2026	APWS Task ID: 0E404B4EC8F246B89549BA1A3B1B79A8	APWS Project ID: CA51BA4948754EC896A9153BC626FB4C
Procedure: STAR STOCR FIVE (RNAV) CHARLOTTE NC KCLT		Enroute: YES	Specialist: Copeland, Guy		Agreement Number:
Airport ID: KCLT			Airport City: CHARLOTTE		State: NC
Facility ID:	Facility Type:	Flight Inspection Remark Type: New FC Slot			

Procedure Comments:

CONTACT CASIMIR TABAKA, AJV-A432 405-202-7857

ABBREVIATED AMENDMENT

PROCESSED IAW TECHNICAL SUPPORT GROUP (AJF- 17) MEMO DATED 07/07/2021, SUBJECT: GUIDANCE FOR PROCEDURAL CHANGES REQUIRING FLIGHT INSPECTION VALIDATION.

01/09/2026



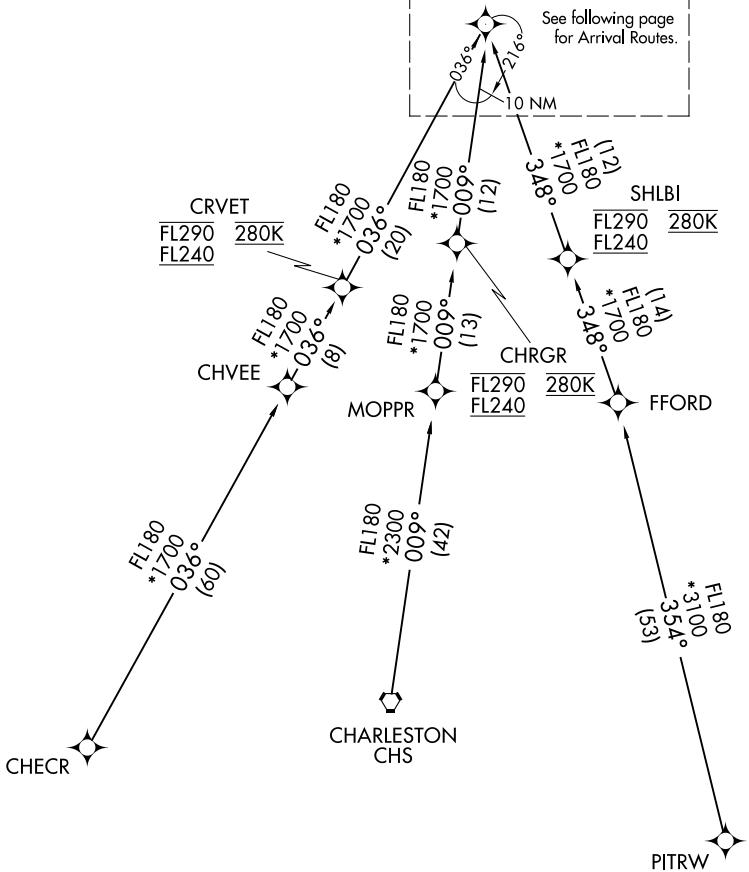
STOCR FOUR ARRIVAL (RNAV) Transition Routes

CHARLOTTE APP CON
126.15 282.325
D-ATIS ARR
121.15

RNAV 1 - DME/DME/IRU OR GPS.
RADAR required.

FLLGG
FL230 280K
FL210

See following page
for Arrival Routes.



NOTE: Jet aircraft only.
 NOTE: Landing south use Rwy 18L transition,
 landing north use Rwy 36R transition.
 Expect runway assignment from CLT approach.
 NOTE: Jet aircraft descend via Mach number until 280K,
 if unable, advise ATC.

NOTE: Chart not to scale.

CHARLESTON TRANSITION (CHS.STOCR4)
CHECR TRANSITION (CHECR.STOCR4)
PITRW TRANSITION (PITRW.STOCR4)

(CONTINUED ON FOLLOWING PAGE)

(FLLGG.STOCR4) 24137

OLD

8 (FAA)

CHARLOTTE/DOUGLAS INTL (CLT)
CHARLOTTE, NORTH CAROLINA

STOCR FOUR ARRIVAL (RNAV) Arrival Routes

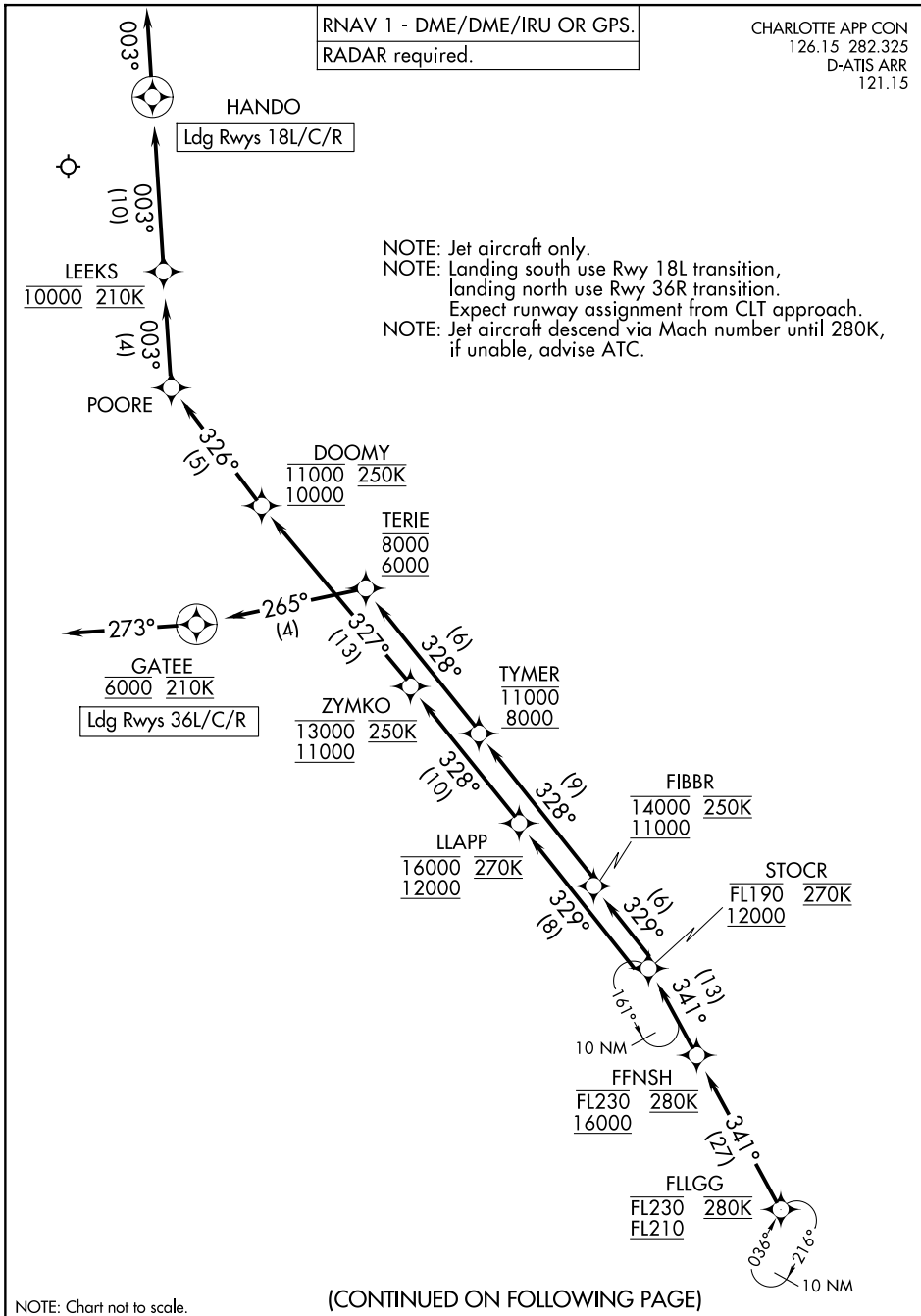
RNAV 1 - DME/DME/IRU OR GPS.
RADAR required.

CHARLOTTE APP CON
126.15 282.325
D-ATIS ARR
121.15

NOTE: Jet aircraft only.
NOTE: Landing south use Rwy 18L transition,
landing north use Rwy 36R transition.
Expect runway assignment from CLT approach.
NOTE: Jet aircraft descend via Mach number until 280K,
if unable, advise ATC.

SE-2, 27 NOV 2025 to 25 DEC 2025

SE-2, 27 NOV 2025 to 25 DEC 2025



NOTE: Chart not to scale.

(CONTINUED ON FOLLOWING PAGE)

STOCR FOUR ARRIVAL (RNAV) Arrival Routes

(FLLGG.STOCR4) 16MAY24

CHARLOTTE, NORTH CAROLINA
CHARLOTTE/DOUGLAS INTL (CLT)

STOCR FOUR ARRIVAL (RNAV)

ARRIVAL ROUTE DESCRIPTION

From FLLGG on track 341° to cross FFNSH between 16000 and FL230 and at 280K, then on track 341° to cross STOCR between 12000 and FL190 and at 270K.

LANDING RUNWAYS 18L/C/R: From STOCR on track 329° to cross LLAPP between 12000 and 16000 and at 270K, then on track 328° to cross ZYMKO between 11000 and 13000 and at 250K, then on track 327° to cross DOOMY between 10000 and 11000 and at 250K, then on track 326° to POORE, then on track 003° to cross LEEKS at 10000 and at 210K, then on track 003° to HANDO, then on track 003°. Expect RADAR vectors to final approach course.

LANDING RUNWAYS 36L/C/R: From STOCR on track 329° to cross FIBBR between 11000 and 14000 and at 250K, then on track 328° to cross TYMER between 8000 and 11000, then on track 328° to cross TERIE between 6000 and 8000, then on track 265° to cross GATEE at 6000 and at 210K, then on track 273°. Expect RADAR vectors to final approach course.

SE-2, 27 NOV 2025 to 25 DEC 2025

SE-2, 27 NOV 2025 to 25 DEC 2025