

Flight Procedures Cover Page	Task Action: Abbreviated Amendment	Task Type: IAP	Estimated Chart Date: 04/22/2021	APWS Task ID: 0E5F92E7CA8B40E993D1852CC0CD341A	APWS Project ID: 4CF97BDBE810407C9E65569C779511DE
Procedure: ILS OR LOC Y RWY 27 AMDT 3D		Enroute: NO	Specialist: Feronti, Tia		Agreement Number:
Airport ID: KHLN			Airport City: HELENA		State: MT
Facility ID: HLN	Facility Type: ILS	Flight Inspection Remark Type:			

**Procedure Comments:**

ABBREVIATED AMENDMENT COMPLETED USING ACTIVE DATA.  
 INCORPORATES NOTAMS 4/8888 3B, 0/2461 3C.  
 PROCESSED IAW AIRCRAFT OPERATIONS GROUP (AJF-10) MEMO, APRIL 29, 2020, SUBJECT: FLIGHT INSPECTION REVIEW NOT REQUIRED  
 Contact Don Lanier 405-954-8242.

QUALITY  
22  
CHECKED

2.3.2021  
BD

QUALITY  
41  
CHECKED

OLD

HELENA, MONTANA

AL-192 (FAA)


20198

LOC I- <b>HLN</b>	APP CRS	Rwy ldg	<b>9000</b>
<b>110.1</b>	<b>267°</b>	TDZE	<b>3852</b>
		Apt Elev	<b>3877</b>

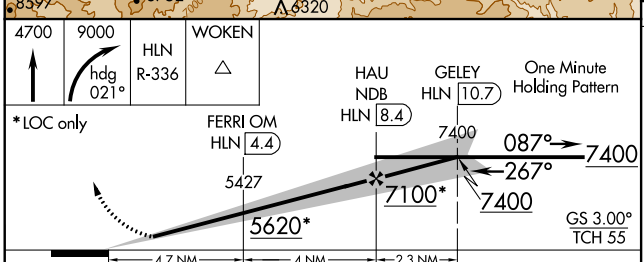
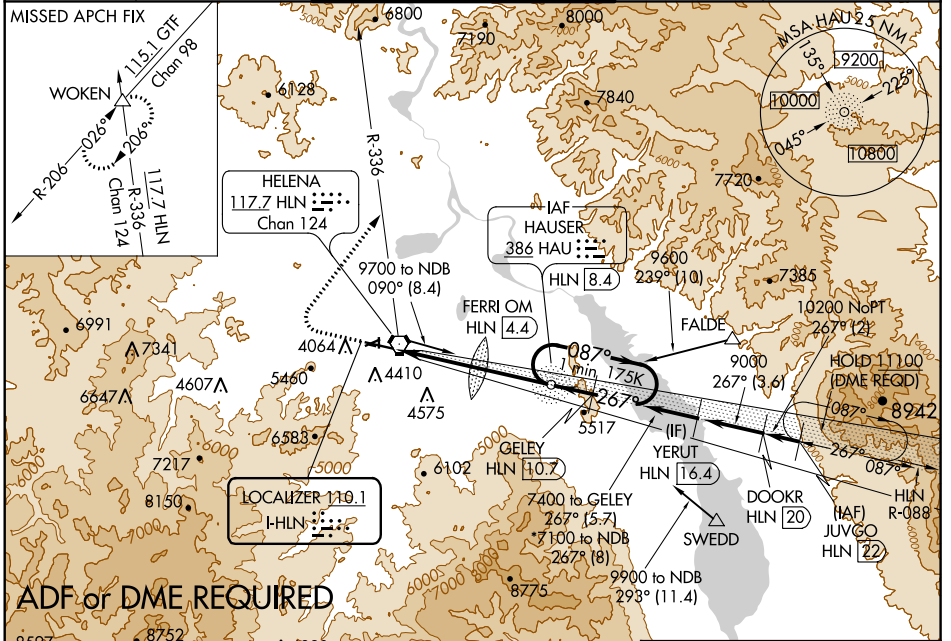
# ILS or LOC Y RWY 27

HELENA RGNL (HLN)

Inoperative table does not apply to S-LOC 27 all Cats. For inoperative MALSR, increase S-ILS 27 all Cats visibility to 1 7/8 miles, FERRI FIX minimums: S-LOC 27 Cat C, D and E visibility to 2 miles. Holding at HAU NDB authorized for Category A and B aircraft only. Circling NA south of Rwy 9-27 for Cats D and E. Circling to Rwy 5, 23, 35 NA at night. DME from HLN VORTAC, simultaneous reception of I-HLN and HLN DME required.

**MALSR**  
  
**MISSED APPROACH:** Climb to 4700 then climbing right turn to 9000 via heading 021° and HLN VORTAC R-336 to WOKEN INT and hold, continue climb-in-hold to 9000.

ATIS <b>120.4</b>	HELENA APP CON * <b>119.5 229.4</b>	HELENA TOWER * <b>118.3 (CTAF) 257.8</b>	GND CON <b>121.9</b>	UNICOM <b>122.95</b>
----------------------	--	---	-------------------------	-------------------------



ELEV	3877	D	TDZE	3852
------	------	---	------	------

CATEGORY	A	B	C	D	E
S-ILS 27	4409-1 3/8		557 (600-1 1/8)		
S-LOC 27	5620-1 1/4 1768 (1800-1 1/4)	5620-1 1/2 1768 (1800-1 1/2)	5620-3	1768 (1800-3)	
CIRCLING	5620-1 1/4 1743 (1800-1 1/4)	5620-1 1/2 1743 (1800-1 1/2)	5920-3	2043 (2100-3)	
<b>FERRI FIX MINIMUMS*</b>					
S-LOC 27	4580-1/2	728 (800-1/2)	4580-1 5/8	728 (800-1 5/8)	
CIRCLING	4640-1 763 (800-1)	4800-1 1/4 923 (1000-1 1/4)	5920-3	2043 (2100-3)	

REIL Rwys 9, 17 and 35  
 MIRL Rwys 5-23 and 17-35  
 HIRL Rwy 9-27

FAF to MAP 8.7 NM

Knots	60	90	120	150	180
Min:Sec	8:42	5:48	4:21	3:29	2:54

HELENA, MONTANA  
 Amdt 3C 16JUL20

46°36'N-111°59'W

OLD

# HELENA RGNL (HLN) ILS or LOC Y RWY 27

NW-1, 03 DEC 2020 to 31 DEC 2020

NW-1, 03 DEC 2020 to 31 DEC 2020