

FEDERAL AVIATION ADMINISTRATION
 FLIGHT STANDARDS SERVICE
 STANDARD TERMINAL ARRIVAL (STAR)

Bearings, headings, courses, tracks and radials are magnetic. Elevations and altitudes are in feet, MSL. Altitudes are minimum altitudes unless otherwise indicated.
 Ceilings are in feet above airport elevation. Distances are in nautical miles. Visibilities are in statute miles or feet RVR unless otherwise indicated.

Arrival Name	Number	STAR Computer Code	Superseded Number	Dated	Effective Date
BONJO (RNAV)	THREE	ROKKR.BONJO3	TWO	02/01/2018	

TRANSITION ROUTES:

Transition Name	Transition Computer Codes	From FIX/NAVAID	To FIX/NAVAID	Course	Distance	MEA	MOCA	MAA	Crossing Altitudes / Fixes
HIHWY	HIHWY.BONJO3	HIHWY	HIHWY						BETWEEN FL200 AND FL220
			MAIDD	138.93	09.48	17000	11100	BETWEEN 17000 AND FL190	
			PEPRZ	139.45	12.37	14000	11100	BETWEEN 14000 AND 16000	
			HEVVY	133.91	06.13	11000	9200		
			ROKKR	133.85	03.35	11000	9200	BETWEEN 11000 AND 12000	
HONZK	HONZK.BONJO3	HONZK	HONZK						AT/ABOVE FL240
			PRPLE	127.78	18.00	17000	9800	BETWEEN FL200 AND FL220	
			XXELL	117.12	09.51	17000	9800	BETWEEN 17000 AND FL190	
			YUTOO	116.39	12.63	14000	9800	BETWEEN 14000 AND 16000	
			TRAVV	108.80	08.50	11000	9800		
PRPLE	PRPLE.BONJO3	PRPLE	ROKKR	098.32	03.79	11000	9200		BETWEEN 11000 AND 12000
			PRPLE						BETWEEN FL200 AND FL220
			XXELL	117.12	09.51	17000	9800	BETWEEN 17000 AND FL190	
			YUTOO	116.39	12.63	14000	9800	BETWEEN 14000 AND 16000	
			TRAVV	108.80	08.50	11000	9800		
RDHOT	RDHOT.BONJO3	RDHOT	RDHOT						BETWEEN 11000 AND 12000
			IGGY	127.49	24.00	17000	9800	AT/ABOVE FL240	
			HONZK	127.67	14.37	17000	9800	AT/ABOVE FL240	
			PRPLE	127.78	18.00	17000	9800	BETWEEN FL200 AND FL220	
			XXELL	117.12	09.51	17000	9800	BETWEEN 17000 AND FL190	
			YUTOO	116.39	12.63	14000	9800	BETWEEN 14000 AND 16000	
			TRAVV	108.80	08.50	11000	9800		
REBRG	REBRG.BONJO3	REBRG	ROKKR	098.32	03.79	11000	9200		BETWEEN 11000 AND 12000
			REBRG						
			MMTLY	177.43	19.63	17000	11100		
			CRUUE	161.51	10.98	17000	11100	AT/ABOVE FL290	



FEDERAL AVIATION ADMINISTRATION
 FLIGHT STANDARDS SERVICE
 STANDARD TERMINAL ARRIVAL (STAR)

Bearings, headings, courses, tracks and radials are magnetic. Elevations and altitudes are in feet, MSL. Altitudes are minimum altitudes unless otherwise indicated.
 Ceilings are in feet above airport elevation. Distances are in nautical miles. Visibilities are in statute miles or feet RVR unless otherwise indicated.

Arrival Name	Number	STAR Computer Code	Superseded Number	Dated	Effective Date				
BONJO (RNAV)	THREE	ROKKR.BONJO3	TWO	02/01/2018					
Transition Name	Transition Computer Codes	From FIX/NAVAID	To FIX/NAVAID	Course	Distance	MEA	MOCA	MAA	Crossing Altitudes / Fixes
			EEAZY	154.55	15.49	17000	11100		BETWEEN FL240 AND FL290
			HIHWY	130.21	17.04	17000	11100		BETWEEN FL200 AND FL220
			MAIDD	138.93	09.48	17000	11100		BETWEEN 17000 AND FL190
			PEPRZ	139.45	12.37	14000	11100		BETWEEN 14000 AND 16000
			HEVVY	133.91	06.13	11000	9200		
			ROKKR	133.85	03.35	11000	9200		BETWEEN 11000 AND 12000

ARRIVAL ROUTE DESCRIPTION:

FROM ROKKR ON TRACK 133.87/7.43 TO CROSS ZEPPE BETWEEN 9000 AND 10000, THEN ON TRACK 134.21/5.32 TO CROSS IVINS AT OR ABOVE 8000, THEN ON TRACK 112.67/14.86 TO CROSS ROLLI AT OR ABOVE 6000, THEN ON TRACK 083.85/11.39 TO CROSS BONJO AT 5000, THEN ON TRACK 103.00. EXPECT RADAR VECTORS TO FINAL APPROACH COURSE.

PBN REQUIREMENT NOTES:

RNAV 1 - DME/DME/IRU OR GPS

EQUIPMENT REQUIREMENT NOTES:

RADAR REQUIRED

PROCEDURAL DATA NOTES:

FIXES AND/OR HOLDING PATTERNS:

COMMUNICATIONS:

AIRPORTS SERVED:

<u>AIRPORT ID</u>	<u>CITY</u>	<u>STATE</u>
SMO	SANTA MONICA	CA

LOST COMMUNICATIONS PREFERENCES:

REMARKS:

ADDITIONAL FLIGHT DATA:

DME/DME ASSESSMENT: SAT (RNP 2.0)

MAG VAR: KSMO 12E/2020

CHART AT BONJO TERMINUS: LDG SMO



FEDERAL AVIATION ADMINISTRATION
 FLIGHT STANDARDS SERVICE
 STANDARD TERMINAL ARRIVAL (STAR)

Bearings, headings, courses, tracks and radials are magnetic. Elevations and altitudes are in feet, MSL. Altitudes are minimum altitudes unless otherwise indicated.
 Ceilings are in feet above airport elevation. Distances are in nautical miles. Visibilities are in statute miles or feet RVR unless otherwise indicated.

Arrival Name	Number	STAR Computer Code	Superseded Number	Dated	Effective Date
BONJO (RNAV)	THREE	ROKKR.BONJO3	TWO	02/01/2018	

FLIGHT INSPECTED BY:

ORGANIZATION: DATE:

THOMAS E MOLOKIE

FPO

10/09/2024

Flight Inspected Signature: _____

DEVELOPED BY:

ROBERT G. HAMILTON (TODD A. RUSSELL)

AJV-A433

07/01/2024

Developed By Signature: _____

APPROVED BY:

ROBERT G. HAMILTON

AJV-A433

Approved By Signature: _____

CHANGES:

1. MOVED HEVVY WAYPOINT (WP) 3770 FT NE.
2. MOVED ROKKR WP 1.02 NM NE.
3. MOVED ZEPPE WP 3200 FT NE.
4. ADDED IGGYY WP WITH SPEED RESTRICTION OF AT 280 KIAS AND ALTITUDE RESTRICTION OF AT OR ABOVE FL240.
5. ADDED SPEED RESTRICTION OF AT 280 KIAS AT HONZK WP.
6. ADDED RNAV 1-DME/DME/IRU OR GPS REQUIRED TO PBN REQUIREMENT NOTES.
7. ADDED RADAR REQUIRED TO EQUIPMENT REQUIREMENT NOTES.
8. DELETED D-ATIS FROM COMMUNICATIONS.
9. ADDED CHARTED TERMINUS DATA AT BONJO WP: CHART AT BONJO TERMINUS: LDG KSMO.
10. ALL MOCAS UPDATED.
11. REMOVED DO NOT CHART MOCAS.
12. REMOVED RECOMMENDED NAVAID FROM 17.2 FORM.

REASONS:

- 1-3. ATC REQUEST TO ALIGN POINTS AND STRAIGHTEN ARRIVAL ROUTE.
4. ATC REQUEST TO ACHIEVE 5 NM SEPARATION FROM KLAX ZUUMA RNAV STAR.
5. ATC REQUEST TO IMPROVE TIME BASED FLOW MANAGEMENT ACCURACY BETWEEN AIRCRAFT ON MULTIPLE LA BASIN PROCEDURES AND REDUCE TRANSMISSIONS.
- 6-8. IAW 8260.19J DOCUMENTATION STANDARDS.
9. IAW FAAO 8260.19J 4-5-2 h (2) STAR TERMINUS DATA.
10. NEW DME/DME ASSESSMENT AND NEW TERRAIN/OBSTACLE ANALYSIS.
11. NO LONGER REQUIRED.
12. NO LONGER REQUIRED.

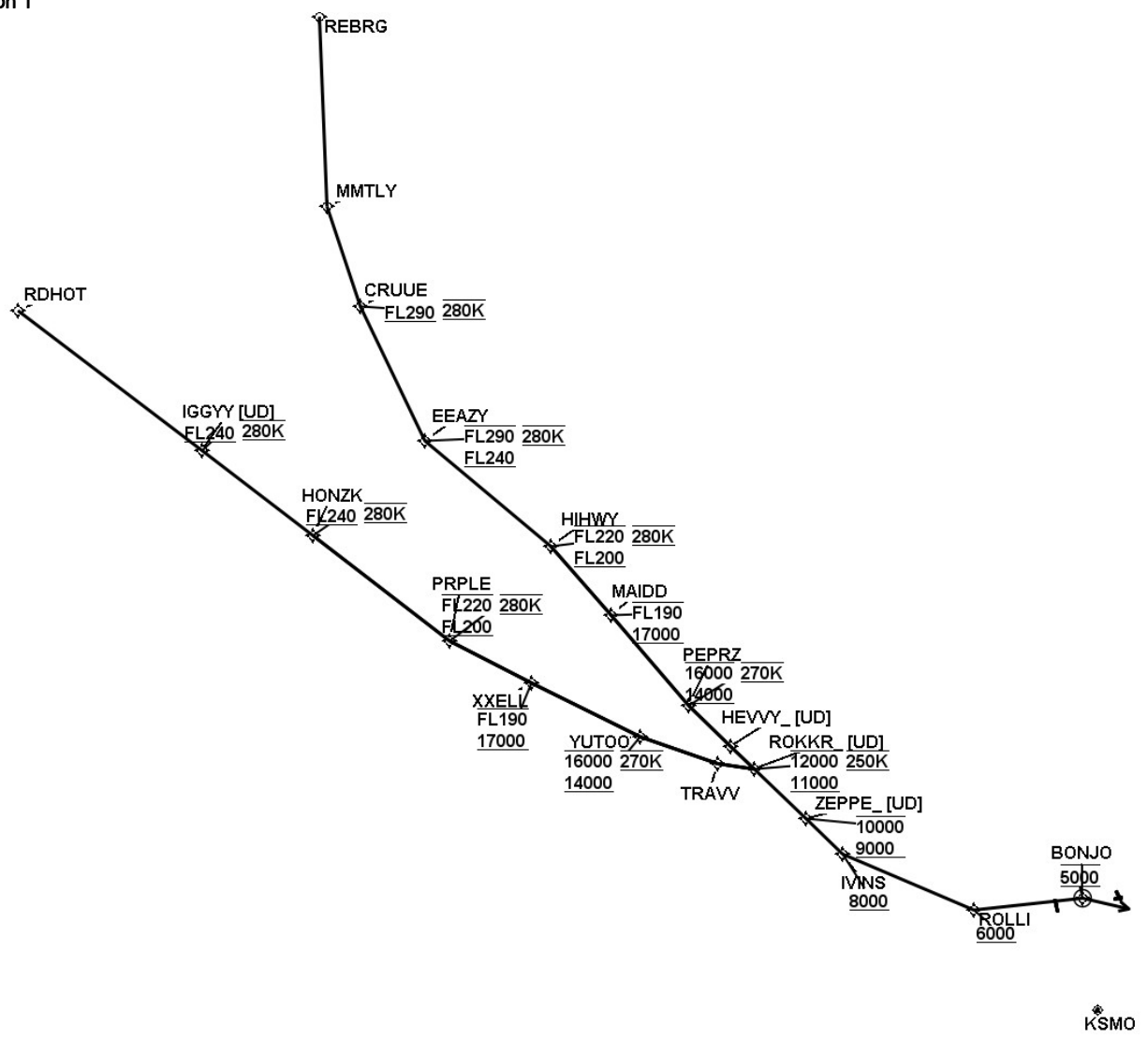


FEDERAL AVIATION ADMINISTRATION
 FLIGHT STANDARDS SERVICE
 STANDARD TERMINAL ARRIVAL (STAR)

Bearings, headings, courses, tracks and radials are magnetic. Elevations and altitudes are in feet, MSL. Altitudes are minimum altitudes unless otherwise indicated.
 Ceilings are in feet above airport elevation. Distances are in nautical miles. Visibilities are in statute miles or feet RVR unless otherwise indicated.

Arrival Name	Number	STAR Computer Code	Superseded Number	Dated	Effective Date
BONJO (RNAV)	THREE	ROKKR.BONJO3	TWO	02/01/2018	

Graphic Depiction 1



FEDERAL AVIATION ADMINISTRATION
 FLIGHT STANDARDS SERVICE
 STAR (DATA RECORD)

Arrival Name BONJO (RNAV)	Number THREE	STAR Computer Code ROKKR.BONJO3		Superseded Number TWO		Dated 02/01/2018	Effective Date		
FIX/NAVAID	LAT/LONG	C	FO/FB	LEG TYPE	TC	DIST (NM)	ALTITUDE	SPEED	REMARKS
En Route Transition									
HIHWY	345958.59N / 1192212.26W	Y		IF			FL200BFL220	AT 280K	HIHWY.BONJO3
MAIDD	345140.67N / 1191636.53W	Y	FB	TF	150.93	09.48	17000BFL190		
PEPRZ	344047.34N / 1190926.41W	Y	FB	TF	151.45	12.37	14000B16000	AT 270K	
HEVVY	343541.99N / 1190516.59W	Y	FB	TF	145.91	06.13			
ROKKR	343255.36N / 1190300.00W	Y	FB	TF	145.85	03.35	11000B12000	AT 250K	
En Route Transition									
HONZK	350616.49N / 1195113.84W	Y		IF			AT/ABOVE FL240	AT 280K	HONZK.BONJO3
PRPLE	345229.65N / 1193706.29W	Y	FB	TF	139.78	18.00	FL200BFL220	AT 280K	
XXELL	344628.51N / 1192808.66W	Y	FB	TF	129.12	09.51	17000BFL190		
YUTOO	343836.46N / 1191608.63W	Y	FB	TF	128.39	12.63	14000B16000	AT 270K	
TRAVV	343414.54N / 1190718.13W	Y	FB	TF	120.80	08.50			
ROKKR	343255.36N / 1190300.00W	Y	FB	TF	110.32	03.79	11000B12000	AT 250K	
En Route Transition									
PRPLE	345229.65N / 1193706.29W	Y		IF			FL200BFL220	AT 280K	PRPLE.BONJO3
XXELL	344628.51N / 1192808.66W	Y	FB	TF	129.12	09.51	17000BFL190		
YUTOO	343836.46N / 1191608.63W	Y	FB	TF	128.39	12.63	14000B16000	AT 270K	
TRAVV	343414.54N / 1190718.13W	Y	FB	TF	120.80	08.50			
ROKKR	343255.36N / 1190300.00W	Y	FB	TF	110.32	03.79	11000B12000	AT 250K	
En Route Transition									
RDHOT	353533.31N / 1202136.43W	Y		IF					RDHOT.BONJO3
IGGY	351715.30N / 1200233.80W	Y	FB	TF	139.49	24.00	AT/ABOVE FL240	AT 280K	
HONZK	350616.49N / 1195113.84W	Y	FB	TF	139.67	14.37	AT/ABOVE FL240	AT 280K	
PRPLE	345229.65N / 1193706.29W	Y	FB	TF	139.78	18.00	FL200BFL220	AT 280K	
XXELL	344628.51N / 1192808.66W	Y	FB	TF	129.12	09.51	17000BFL190		
YUTOO	343836.46N / 1191608.63W	Y	FB	TF	128.39	12.63	14000B16000	AT 270K	



FEDERAL AVIATION ADMINISTRATION
 FLIGHT STANDARDS SERVICE
 STAR (DATA RECORD)

Arrival Name BONJO (RNAV)	Number THREE	STAR Computer Code ROKKR.BONJO3		Superseded Number TWO		Dated 02/01/2018	Effective Date		
<u>FIX/NAVAID</u>	<u>LAT/LONG</u>	<u>C</u>	<u>FO/FB</u>	<u>LEG TYPE</u>	<u>TC</u>	<u>DIST (NM)</u>	<u>ALTITUDE</u>	<u>SPEED</u>	<u>REMARKS</u>
TRAVV	343414.54N / 1190718.13W	Y	FB	TF	120.80	08.50			
ROKKR	343255.36N / 1190300.00W	Y	FB	TF	110.32	03.79	11000B12000	AT 250K	
En Route Transition									
REBRG	355853.00N / 1193653.00W	Y		IF					REBRG.BONJO3
MMTLY	353929.51N / 1194049.65W	Y	FB	TF	189.43	19.63			
CRUUE	352834.02N / 1193918.55W	Y	FB	TF	173.51	10.98	AT/ABOVE FL290	AT 280K	
EEAZY	351328.56N / 1193454.76W	Y	FB	TF	166.55	15.49	FL240BFL290	AT 280K	
HIHWY	345958.59N / 1192212.26W	Y	FB	TF	142.21	17.04	FL200BFL220	AT 280K	
MAIDD	345140.67N / 1191636.53W	Y	FB	TF	150.93	09.48	17000BFL190		
PEPRZ	344047.34N / 1190926.41W	Y	FB	TF	151.45	12.37	14000B16000	AT 270K	
HEVVY	343541.99N / 1190516.59W	Y	FB	TF	145.91	06.13			
ROKKR	343255.36N / 1190300.00W	Y	FB	TF	145.85	03.35	11000B12000	AT 250K	
Common Route									
ROKKR	343255.36N / 1190300.00W	Y		IF			11000B12000	AT 250K	ROKKR.BONJO3
ZEPPE	342645.66N / 1185757.62W	Y	FB	TF	145.87	07.43	9000B10000		
IVINS	342219.84N / 1185423.15W	Y	FB	TF	146.21	05.32	AT/ABOVE 8000		
ROLLI	341350.82N / 1183938.73W	Y	FB	TF	124.67	14.86	AT/ABOVE 6000		
BONJO	341240.32N / 1182559.33W	Y	FO	TF	095.85	11.39	AT 5000		
KSMO				FM	115.00				

