

Flight Procedures Cover Page	Task Action: Abbreviated Amendment	Task Type: IAP	Estimated Chart Date: 03/19/2026	APWS Task ID: 0EB3A6BC132B4F31998967B232B01EA2	APWS Project ID: 6F1C8A83A5AA49618995002C46B14777
Procedure: RNAV (GPS) RWY 9R AMDT 1E		Enroute: NO	Specialist: Wilkinson, Christopher		Agreement Number:
Airport ID: KSBN			Airport City: SOUTH BEND		State: IN
Facility ID:	Facility Type:	Flight Inspection Remark Type:			

**Procedure Comments:**

UTILIZED PENDING DATA FOR KSBN AND RWYS.

CLEARs NOTAM FDC 5/4400.

PROCESSED IAW TECHNICAL SUPPORT GROUP (AJF-17) MEMO DATED 07/07/2021 GUIDANCE FOR PROCEDURAL CHANGES REQUIRING FLIGHT INSPECTION/VALIDATION.

CONTACT CASIMIR TABAKA, AJV-A430, 405-202-7857.

QUALITY  
41  
CHECKED

QUALITY  
18  
CHECKED

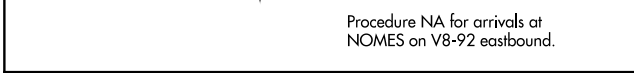
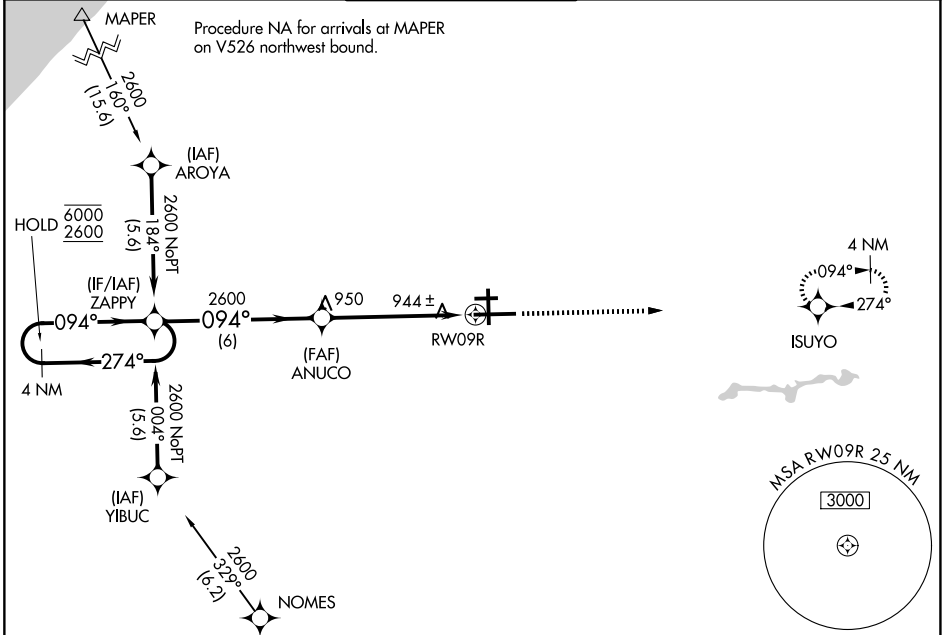
WAAS CH <b>60908</b> <b>W09B</b>	APP CRS <b>094°</b>	Rwy Ldg TDZE <b>790</b> Apt Elev <b>798</b>
--	------------------------	---

**OLD**

**RNAV (GPS) RWY 9R**  
SOUTH BEND INTL (SBN)

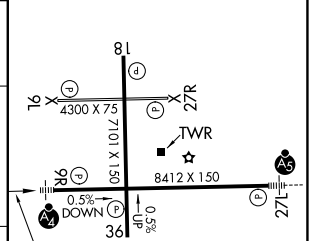
RNP APCH - GPS.		MALSF	MISSED APPROACH: Climb to 2600 direct ISUYO and hold.
⚠ For uncompensated Baro-VNAV systems, LNAV/VNAV NA below -1°C or above 54°C. ⚠ For inop ALS, increase LPV all Cats visibility to RVR 5500 and LNAV Cat C/D to RVR 6000.			

ATIS <b>120.675</b>	SOUTH BEND APP CON ★ <b>118.55 257.8</b>	SOUTH BEND TOWER ★ <b>135.675 (CTAF) 257.8</b>	GND CON <b>121.7</b>	CLNC DEL <b>121.9</b>
------------------------	---	---	-------------------------	--------------------------



ELEV 798	TDZE 790
----------	----------

CATEGORY	A	B	C	D
LPV DA		1135/40	345 (400-3/4)	
LNAV/VNAV DA		1222/50	432 (500-1)	
LNAV MDA	1200/40	410 (500-3/4)	1200/50	410 (500-1)
CIRCLING	1280-1	482 (500-1)	1440-1 3/4 642 (700-1 3/4)	1500-2 1/4 702 (800-2 1/4)



CATEGORY	A	B	C	D
LPV DA		1135/40	345 (400-3/4)	
LNAV/VNAV DA		1222/50	432 (500-1)	
LNAV MDA	1200/40	410 (500-3/4)	1200/50	410 (500-1)
CIRCLING	1280-1	482 (500-1)	1440-1 3/4 642 (700-1 3/4)	1500-2 1/4 702 (800-2 1/4)

HIRL Rwy 9R-27L	①
MIRL Rwy 18-36	②
MIRL Rwy 9L-27R	③

EC-2, 07 AUG 2025 to 04 SEP 2025

EC-2, 07 AUG 2025 to 04 SEP 2025