

ILS or LOC RWY 10

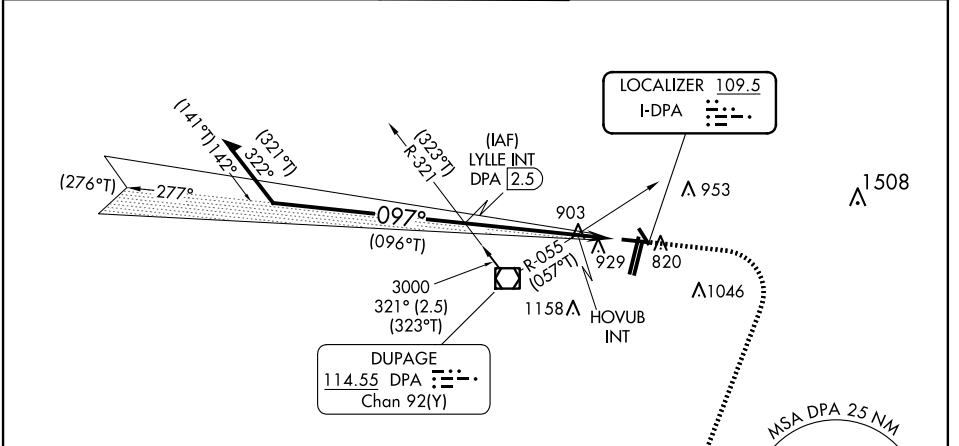
DUPAGE (DPA)

LOC I-DPA 109.5	APP CRS 097°	Rwy Idg TDZE Apt Elev	4750 756 759
---------------------------	------------------------	-----------------------------	---

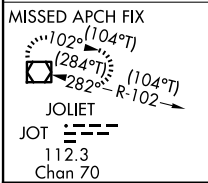
⚠ Circling Rwy 15, 28, 33 NA at night. When local altimeter setting not received, use ARR altimeter setting and increase S-ILS 10 DA to 993 feet; increase all MDAs 40 feet; and Circling visibility Cat C/D ¼ SM.

MISSED APPROACH: Climb to 1200 then climbing right turn to 2600 direct JOT VOR/DME and hold.

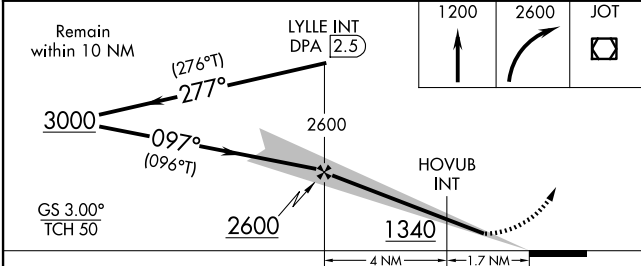
ATIS 132.075	CHICAGO APP CON 133.5 349.0	DUPAGE TOWER 120.9 257.8	GND CON 121.8	CLNC DEL 119.75
------------------------	---------------------------------------	------------------------------------	-------------------------	---------------------------



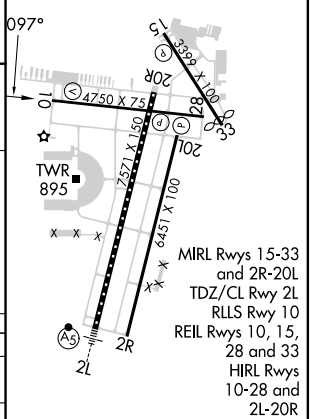
Procedure NA for arrivals at DPA VOR/DME on V6 eastbound.



PROTOTYPE-NOT FOR NAVIGATION



ELEV 759	TDZE 756
----------	----------



CATEGORY	A	B	C	D
S-ILS 10	956-1		200 (200-1)	
S-LOC 10	1220-1	464 (500-1)	1220-1½	464 (500-1½)
CIRCLING	1260-1 501 (600-1)	1360-1 601 (700-1)	1460-2 701 (800-2)	1460-2¼ 701 (800-2¼)

FAF to MAP 5.6 NM					
Knots	60	90	120	150	180
Min:Sec	5:36	3:44	2:48	2:14	1:52