

Flight Procedures Cover Page	Task Action: FLIGHT CHECK	Task Type: IAP	Estimated Chart Date: 08/07/2025	APWS Task ID: 10567AFFE3074AF1AE41CC2624E6390A	APWS Project ID: FB1BB9238C424F0392844E304A886648
Procedure: ILS OR LOC RWY 10 AMDT 9		Enroute: NO	Specialist: Malone, Tevar		Agreement Number:
Airport ID: KDPA			Airport City: CHICAGO/WEST CHICAGO		State: IL
Facility ID: DPA	Facility Type: ILS	Flight Inspection Remark Type: New FC Slot			

Procedure Comments:
ACTIVE AIRPORT AND RUNWAY DATA USED.

Decommission Runway (RWY) 10, Outer Marker (OM) LYLLE.

CONTACT ERIC SUSKI, AJV-A330 MANAGER, 405-954-7331



LOC I-DPA 109.5	APP CRS 097°	Rwy Idg 4750
		TDZE 756
		Apt Elev 759

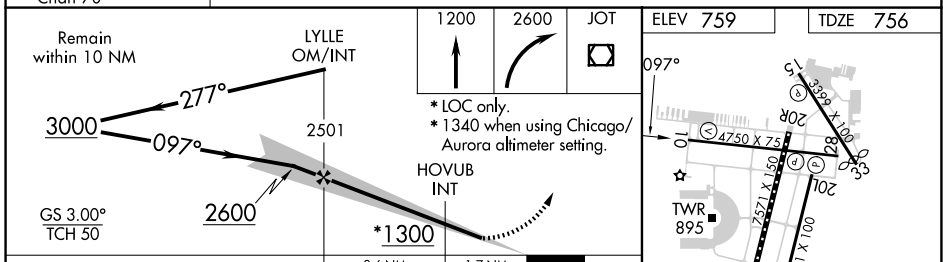
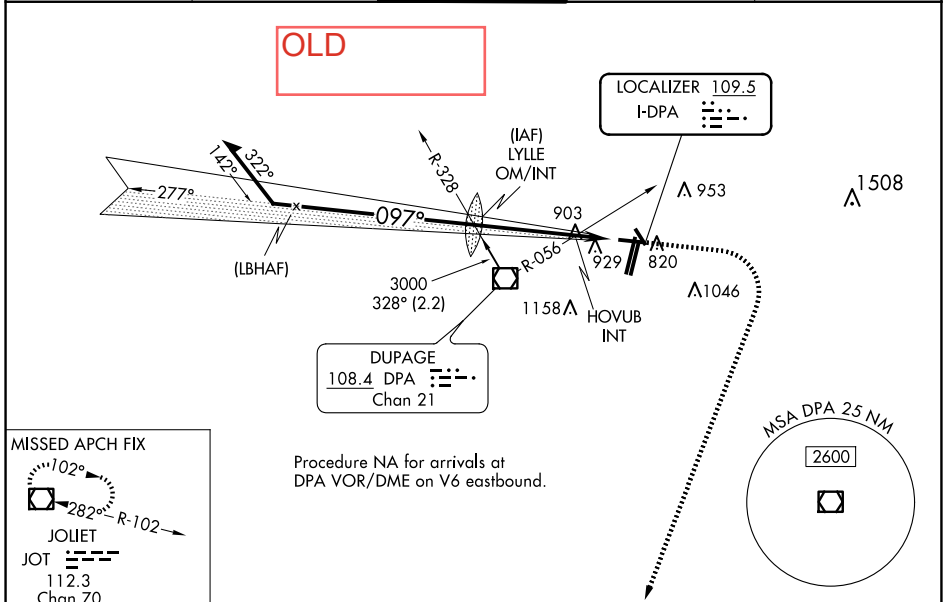
ILS or LOC RWY 10

DUPAGE (DPA)

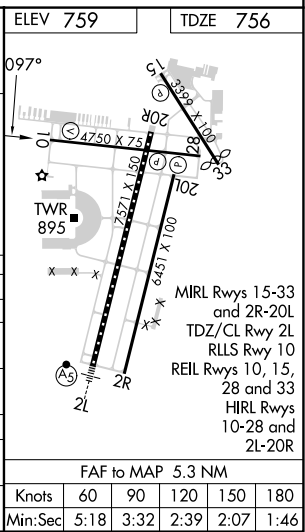
⚠ When local altimeter setting not received, use Chicago/Aurora altimeter setting: increase S-ILS 10 DA to 993 feet; increase all MDA 40 feet and visibility S-LOC 10 Cats C/D and HOVUB INT minimums S-LOC 10 Cats C/D 1/8 SM, and Circling and HOVUB INT minimums Circling Cats C/D 1/4 SM. Circling Rwy 15, 28, 33 NA at night.

⚠ MISSED APPROACH: Climb to 1200 then climbing right turn to 2600 direct JOT VOR/DME and hold.

ATIS 132.075	CHICAGO APP CON 133.5 349.0	DUPAGE TOWER 120.9 257.8	GND CON 121.8	CLNC DEL 119.75
------------------------	---------------------------------------	------------------------------------	-------------------------	---------------------------



CATEGORY	A	B	C	D
S-ILS 10		956-3/4	200 (200-3/4)	
S-LOC 10	1300-1	544 (600-1)	1300-1 5/8	544 (600-1 5/8)
CIRCLING	1300-1 541 (600-1)	1360-1 601 (700-1)	1460-2 701 (800-2)	1460-2 1/4 701 (800-2 1/4)
HOVUB INT MINIMUMS (DUAL VOR RECEIVERS REQUIRED)				
S-LOC 10	1220-1	464 (500-1)	1220-1 3/8	464 (500-1 3/8)
CIRCLING	1260-1 501 (600-1)	1360-1 601 (700-1)	1460-2 701 (800-2)	1460-2 1/4 701 (800-2 1/4)



EC-3, 20 FEB 2025 to 20 MAR 2025

EC-3, 20 FEB 2025 to 20 MAR 2025

ILS or LOC RWY 10

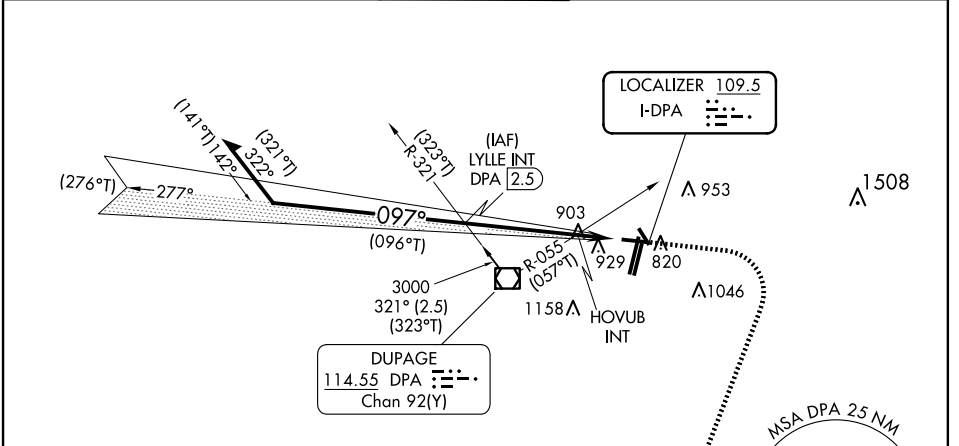
DUPAGE (DPA)

LOC I-DPA 109.5	APP CRS 097°	Rwy Idg TDZE Apt Elev	4750 756 759
---------------------------	------------------------	-----------------------------	---

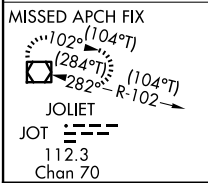
⚠ Circling Rwy 15, 28, 33 NA at night. When local altimeter setting not received, use ARR altimeter setting and increase S-ILS 10 DA to 993 feet; increase all MDAs 40 feet; and Circling visibility Cat C/D ¼ SM.

MISSED APPROACH: Climb to 1200 then climbing right turn to 2600 direct JOT VOR/DME and hold.

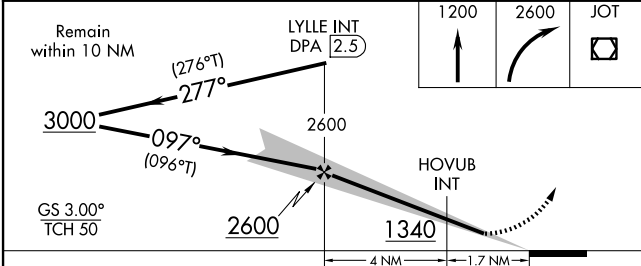
ATIS 132.075	CHICAGO APP CON 133.5 349.0	DUPAGE TOWER 120.9 257.8	GND CON 121.8	CLNC DEL 119.75
------------------------	---------------------------------------	------------------------------------	-------------------------	---------------------------



Procedure NA for arrivals at DPA VOR/DME on V6 eastbound.



PROTOTYPE-NOT FOR NAVIGATION



ELEV 759	TDZE 756
MIRS Rws 15-33 and 2R-20L TDZ/CL Rwy 2L RLLS Rwy 10 REIL Rws 10, 15, 28 and 33 HIRL Rws 10-28 and 2L-20R	
FAF to MAP 5.6 NM	
Knots	60 90 120 150 180
Min:Sec	5:36 3:44 2:48 2:14 1:52

CATEGORY	A	B	C	D
S-ILS 10	956-1		200 (200-1)	
S-LOC 10	1220-1	464 (500-1)	1220-1½	464 (500-1½)
CIRCLING	1260-1 501 (600-1)	1360-1 601 (700-1)	1460-2 701 (800-2)	1460-2¼ 701 (800-2¼)

**KDPA-DUPAGE
CHICAGO/WEST CHICAGO, IL
ILS OR LOC RWY 10
AMDT 9
ALL SEGMENTS
1:500,000**

LOC LYLLE to HOVUB TERRAIN+AAO (1034)
TP733

PT 10 NM_1 to LYLLE TERRAIN+AAO (1221)
TP1426925

PT Initial:ProcedureTurn PT 10 NM_1 Maneuvering TOWER (1386)
17-001565

LOC HOVUB to KDPA;RW10:AER TOWER (903)
17-029184

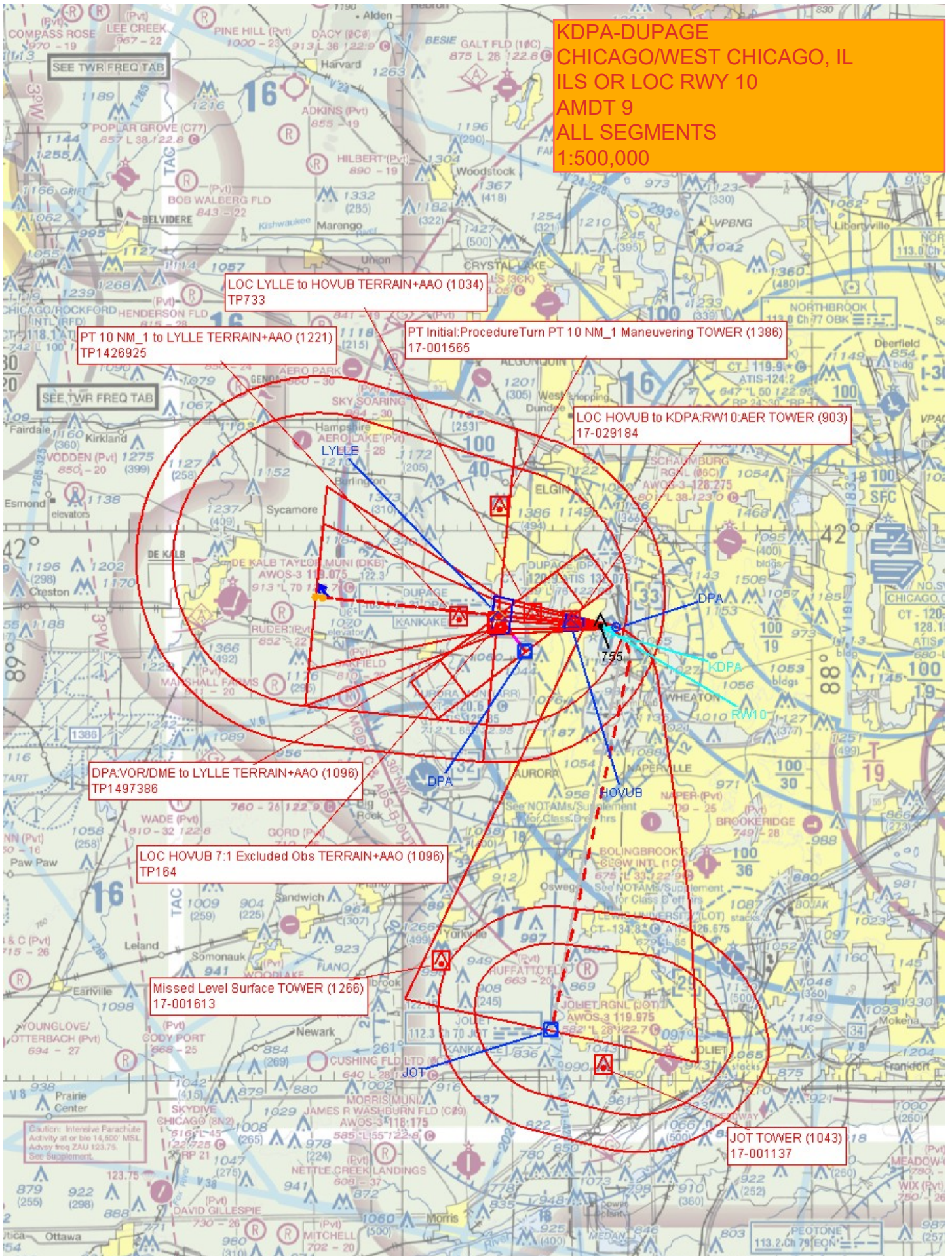
DPA;VOR/DME to LYLLE TERRAIN+AAO (1096)
TP1497386

LOC HOVUB 7:1 Excluded Obs TERRAIN+AAO (1096)
TP164

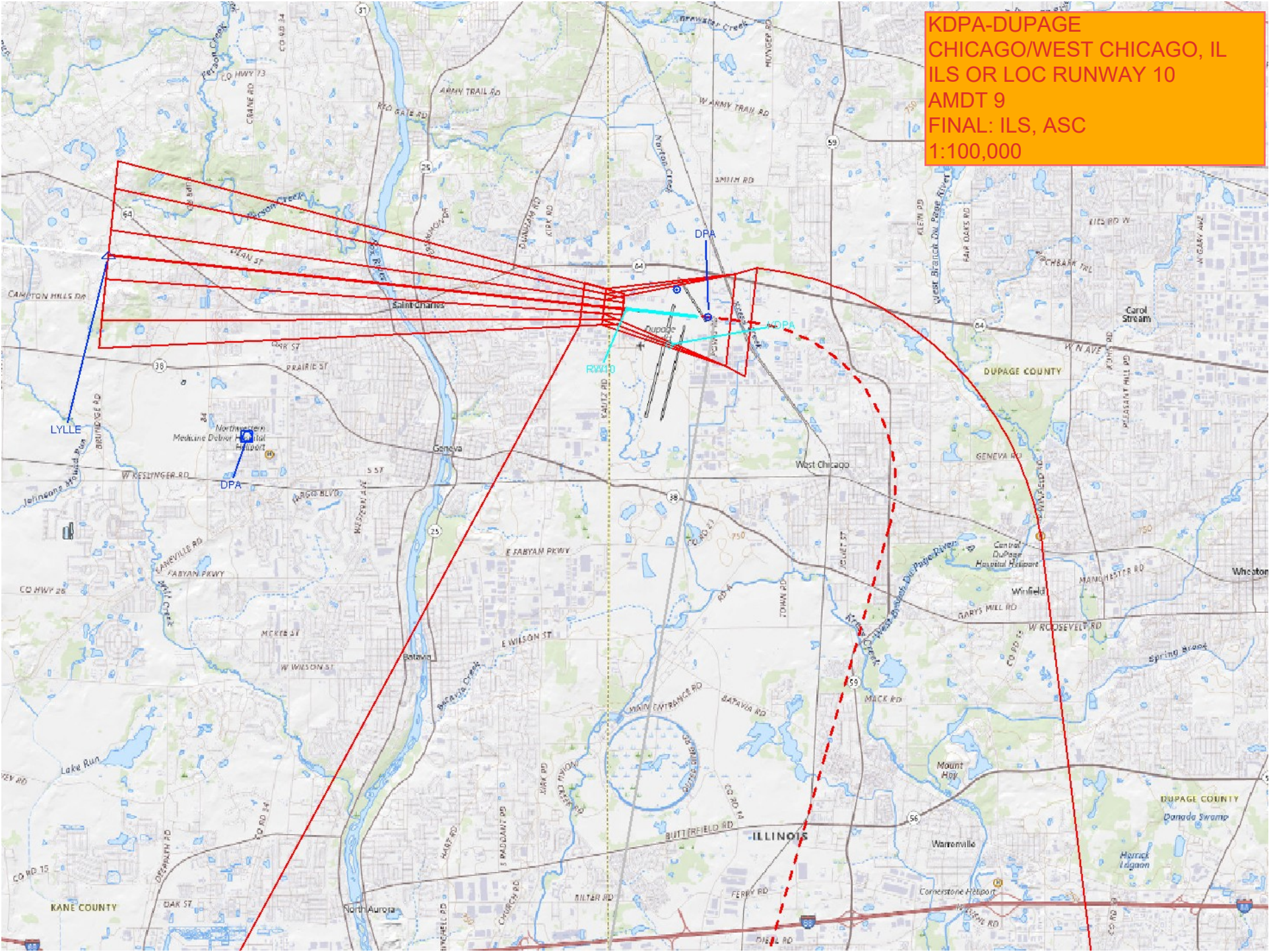
Missed Level Surface TOWER (1266)
17-001613

JOT TOWER (1043)
17-001137

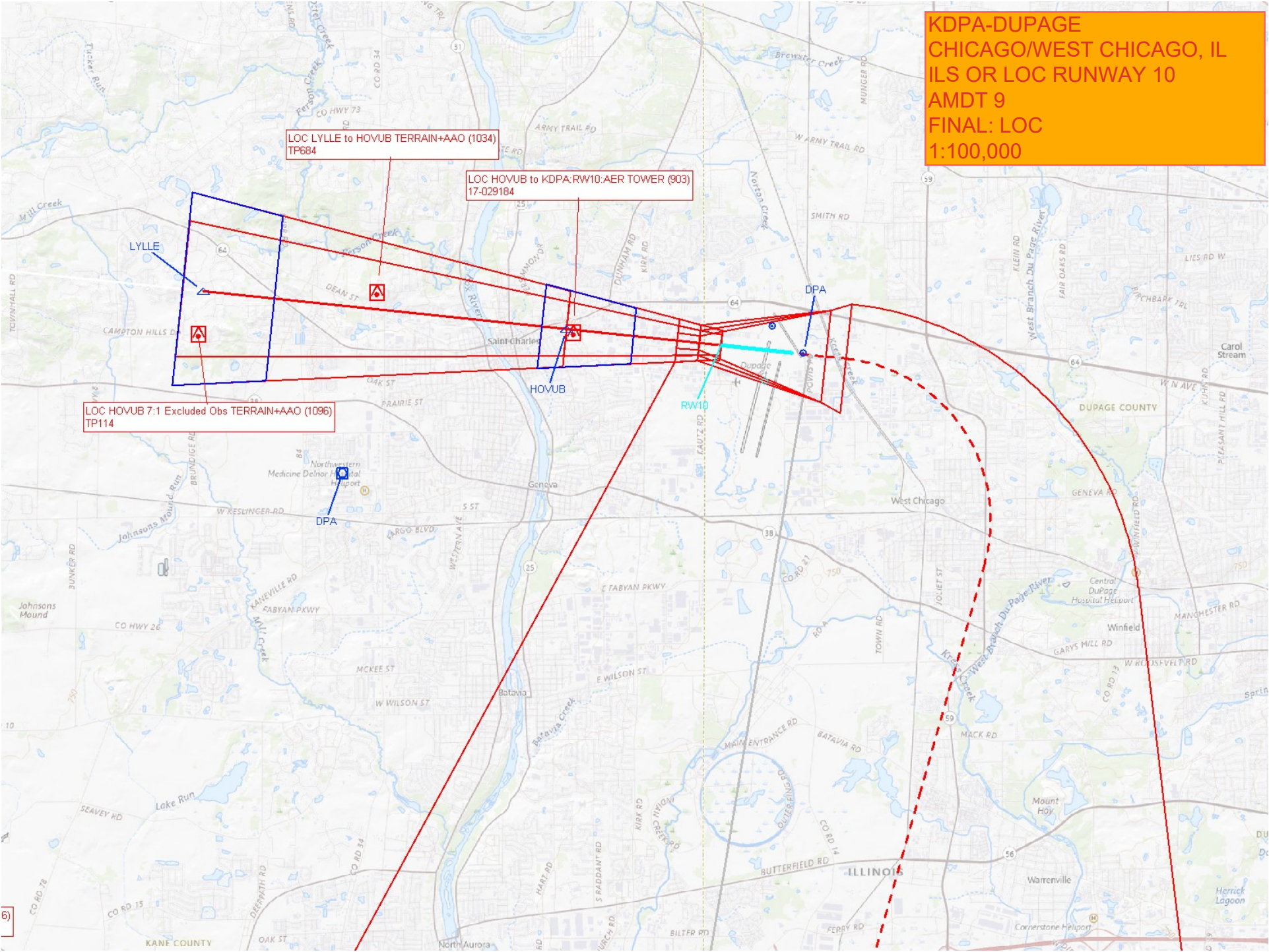
Caution: Intensive Parachute
Activity at or to 14,500' MSL.
Advise freq 240J 123.75.
See Supplement.



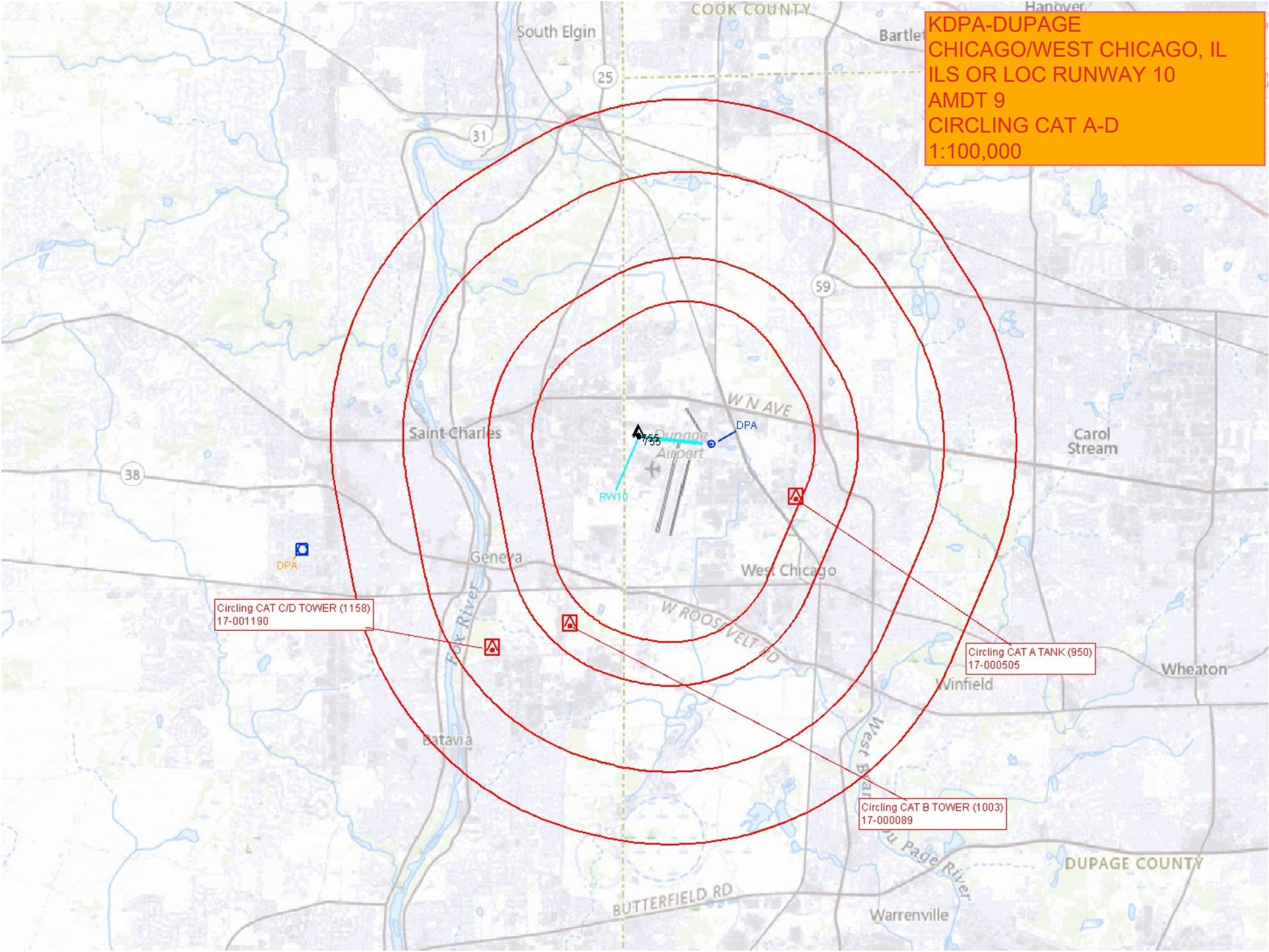
**KDPA-DUPAGE
CHICAGO/WEST CHICAGO, IL
ILS OR LOC RUNWAY 10
AMDT 9
FINAL: ILS, ASC
1:100,000**



**KDPA-DUPAGE
CHICAGO/WEST CHICAGO, IL
ILS OR LOC RUNWAY 10
AMDT 9
FINAL: LOC
1:100,000**



**KDPA-DUPAGE
CHICAGO/WEST CHICAGO, IL
ILS OR LOC RUNWAY 10
AMDT 9
CIRCLING CAT A-D
1:100,000**



Circling CAT C/D TOWER (1158)
17-001190

Circling CAT A TANK (950)
17-000505

Circling CAT B TOWER (1003)
17-000089