

Flight Procedures Cover Page	Task Action: FLIGHT CHECK	Task Type: IAP	Estimated Chart Date: 07/09/2026	APWS Task ID: 10B275DD46E6497395D54143FEA3E8BC	APWS Project ID: 3DFDF2885EF84086B287E7F4D1EE640B
Procedure: RNAV (GPS) RWY 27 AMDT 1		Enroute: YES	Specialist: Swinson, Robert		Agreement Number:
Airport ID: KGDW			Airport City: GLADWIN		State: MI
Facility ID:	Facility Type:	Flight Inspection Remark Type: Hold FC Slot			

Procedure Comments:

PENDING AIRNAV USED FOR KGDW AIRPORT.

ACTIVE AIRNAV DATA USED FOR RUNWAYS.

MOUNT PLEASANT VOR/DME - VOR PORTION DECOMMISSIONED FOR VOR MON.

EN-ROUTE DUE TO MOP INTERSECTION REMOVED FROM WHIPP AND BANJO -2.

CONTACT CASIMIR TABAKA 405 202 7857.



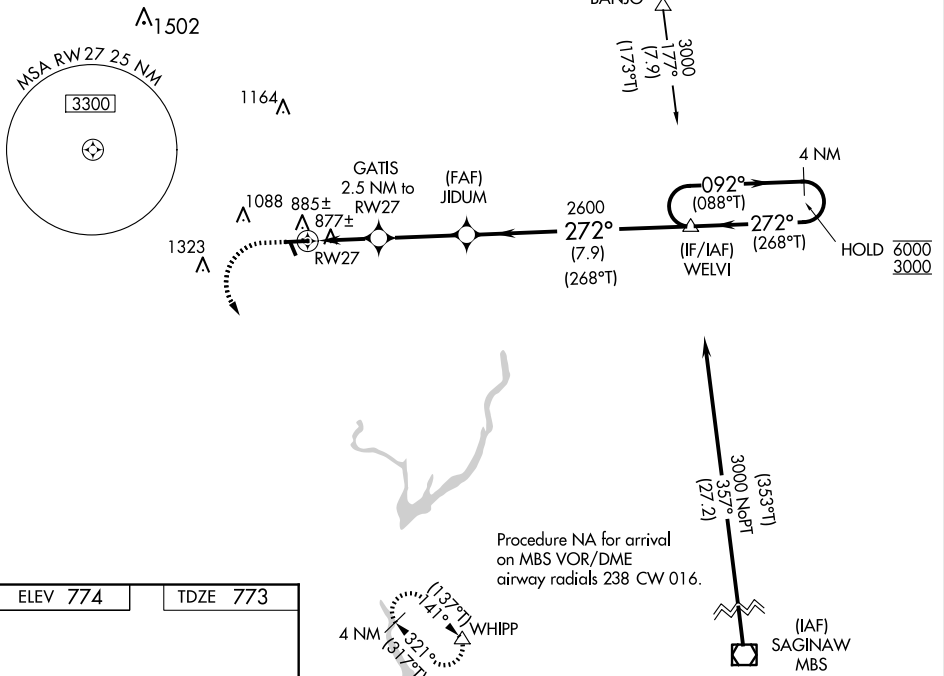
WAAS CH 99326 W27A	APP CRS 272°	Rwy ldg 4699 TDZE 773 Apt Elev 774
--	------------------------	---

RNAV (GPS) RWY 27

GLADWIN ZETTEL MEML (GDW)

RNP APCH - GPS.		MISSED APPROACH: Climbing left turn to 2600 direct WHIPP and hold.
<p>NA Procedure NA at night. Rwy 27 helicopter visibility reduction below 1 SM NA. Circling NA to Rwys 15 and 33. When local altimeter setting not received, use MOP altimeter setting and increase all MDAs 60 feet and LP and LNAV Cats C/D visibility ¼ SM; and circling visibility Cats C/D ¼ SM.</p>		
MOP AWOS-3 133.025	GREAT LAKES APP CON* 126.45 235.625	UNICOM 122.8 (CTAF) 0

PROTOTYPE-NOT FOR NAVIGATION



ELEV 774	TDZE 773
MIRL Rwy 9-27 0	REIL Rwys 9 and 27 0

1300	2600	WHIPP	4 NM Holding Pattern
		JIDUM	WELVI
1600 2.5 NM 3.1 NM 7.9 NM		2600 3.00° TCH 42 272° (268°T)	6000 092° (088°T) 3000 272° (268°T)
CATEGORY	A	B	C
LP MDA	1140-1 367 (400-1)		
LNAV MDA	1140-1 367 (400-1)		
CIRCLING	1300-1 562 (600-1)	1420-1 646 (700-1)	1500-2 726 (800-2)
			1640-2 3/4 866 (1000-23/4)

GLADWIN, MICHIGAN

AL-6672 (FAA)

23110

WAAS CH 99326 W27A	APP CRS 272°	Rwy ldg 4699 TDZE 773 Apt Elev 774
--	------------------------	---

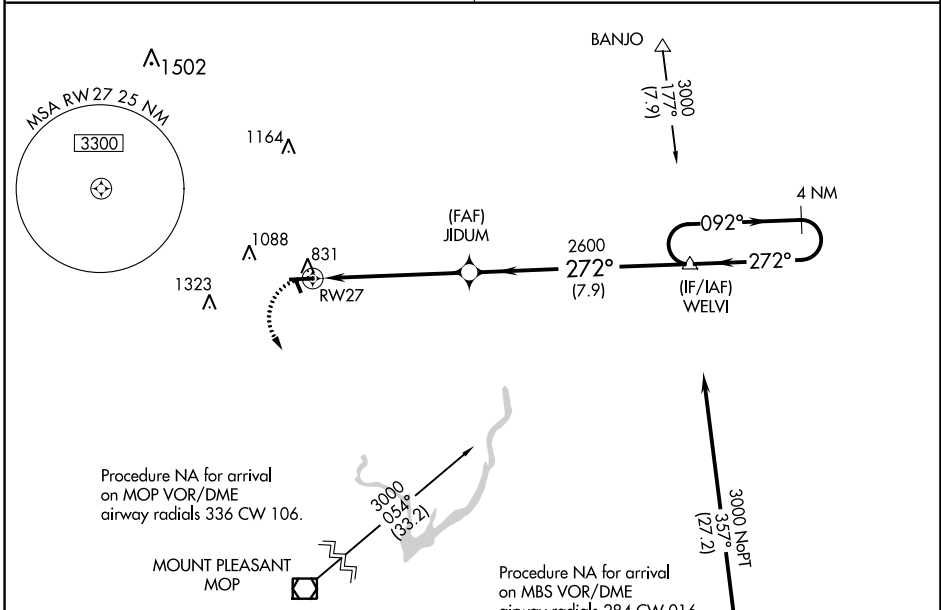
OLD

RNAV (GPS) RWY 27

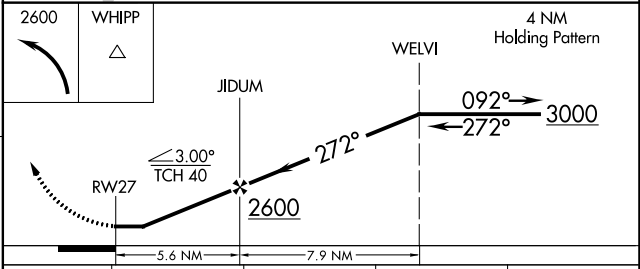
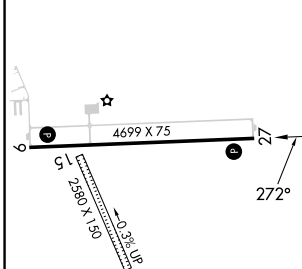
GLADWIN ZETTEL MEML (GDW)

RNP APCH - GPS.	<p>⚠ Circling NA to Rwys 15 and 33. Rwy 27 helicopter visibility reduction below 1 SM NA. Procedure NA at night. Use Mount Pleasant altimeter setting; when not received, use Midland altimeter setting and increase all MDA 20 feet; increase LP and LNAV Cats C/D visibility 1/8 SM.</p>	<p>MISSED APPROACH: Climbing left turn to 2600 direct WHIPP and hold.</p>
-----------------	---	--

GREAT LAKES APP CON* 126.45 235.625	UNICOM 122.8 (CTAF) 0
---	---------------------------------



ELEV 774	TDZE 773
----------	----------



CATEGORY	A	B	C	D
LP MDA	1280-1	507 (600-1)	1280-1 3/8	507 (600-1 1/8)
LNAV MDA	1280-1	507 (600-1)	1280-1 3/8	507 (600-1 1/8)
CIRCLING	1420-1 646 (700-1)	1500-1 726 (800-1)	1520-2 1/4 746 (800-2 1/4)	1700-3 926 (1000-3)

MIRL Rwy 9-27 0
 REIL Rwy 9 and 27 0

GLADWIN, MICHIGAN
 Orig-D 20APR23

43°58'N - 84°29'W

GLADWIN ZETTEL MEML (GDW) RNAV (GPS) RWY 27

EC-1, 05 SEP 2024 to 03 OCT 2024

EC-1, 05 SEP 2024 to 03 OCT 2024