

Flight Procedures Cover Page	Task Action: FLIGHT CHECK	Task Type: IAP	Estimated Chart Date: 04/17/2025	APWS Task ID: 10B275DD46E6497395D54143FEA3E8BC	APWS Project ID: 3DFDF2885EF84086B287E7F4D1EE640B
Procedure: RNAV (GPS) RWY 27 AMDT 1		Enroute: NO	Specialist: Swinson, Robert		Agreement Number:
Airport ID: KGDW			Airport City: GLADWIN		State: MI
Facility ID:	Facility Type:	Flight Inspection Remark Type: New FC Slot			

Procedure Comments:

ACTIVE AIRNAV USED FOR KGDW AIRPORT AND RUNWAY.

MOUNT PLEASANT VOR/DME CANCELED ON ECD 4/17/2025 - VOR MON.

CONTACT CASIMIR TABAKA 405 202 7857.

WHIPP (8260-2)

1/30/2025: THIS IS AN UPDATED COPY OF THE FORM THAT WAS DEVELOPED ON: 09/24/2024:

1. ADDED: PATTERNS: CHANGED PAT 1 CONTROLLING OBSTRUCTION ELEVATION FROM "1119" TO "1118" TO REASON FOR REVISION.
2. ADDED WHIPP TO 8260-2 FILE AND REMOVED FROM 8260-2 NON NFDC FILE.



GLADWIN, MICHIGAN

AL-6672 (FAA)

23110

WAAS CH 99326 W27A	APP CRS 272°	Rwy ldg 4699 TDZE 773 Apt Elev 774
--	------------------------	---

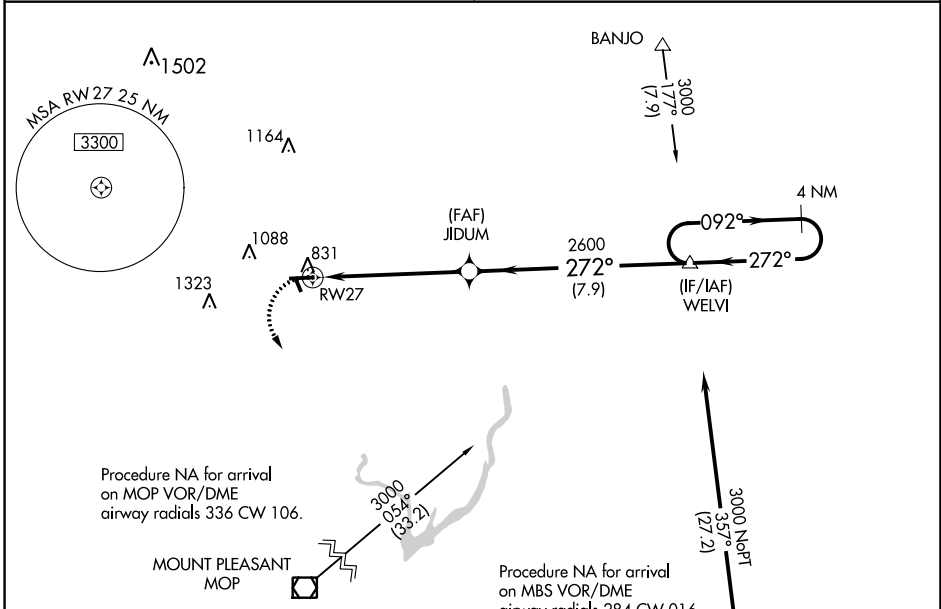
OLD

RNAV (GPS) RWY 27

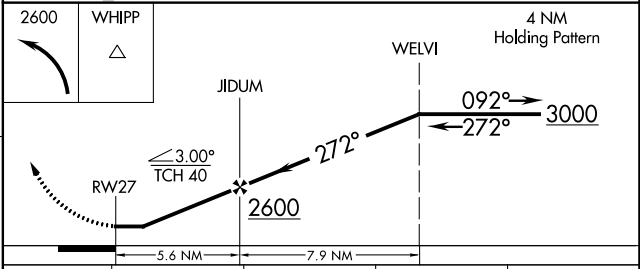
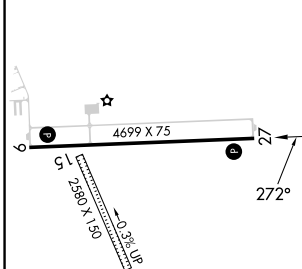
GLADWIN ZETTEL MEML (GDW)

RNP APCH - GPS.		MISSED APPROACH: Climbing left turn to 2600 direct WHIPP and hold.
NA	Circling NA to Rwys 15 and 33. Rwy 27 helicopter visibility reduction below 1 SM NA. Procedure NA at night. Use Mount Pleasant altimeter setting; when not received, use Midland altimeter setting and increase all MDA 20 feet; increase LP and LNAV Cats C/D visibility 1/8 SM.	

GREAT LAKES APP CON* 126.45 235.625	UNICOM 122.8 (CTAF)
---	-------------------------------



ELEV 774	TDZE 773
----------	----------



CATEGORY		A	B	C	D
LP	MDA	1280-1	507 (600-1)	1280-1 3/8	507 (600-1 1/8)
LNAV	MDA	1280-1	507 (600-1)	1280-1 3/8	507 (600-1 1/8)
CIRCLING		1420-1	1500-1	1520-2 1/4	1700-3
		646 (700-1)	726 (800-1)	746 (800-2 1/4)	926 (1000-3)

MIRL Rwy 9-27
REIL Rwy 9 and 27

GLADWIN, MICHIGAN
Orig-D 20APR23

43°58'N - 84°29'W

GLADWIN ZETTEL MEML (GDW) RNAV (GPS) RWY 27

EC-1, 05 SEP 2024 to 03 OCT 2024

EC-1, 05 SEP 2024 to 03 OCT 2024

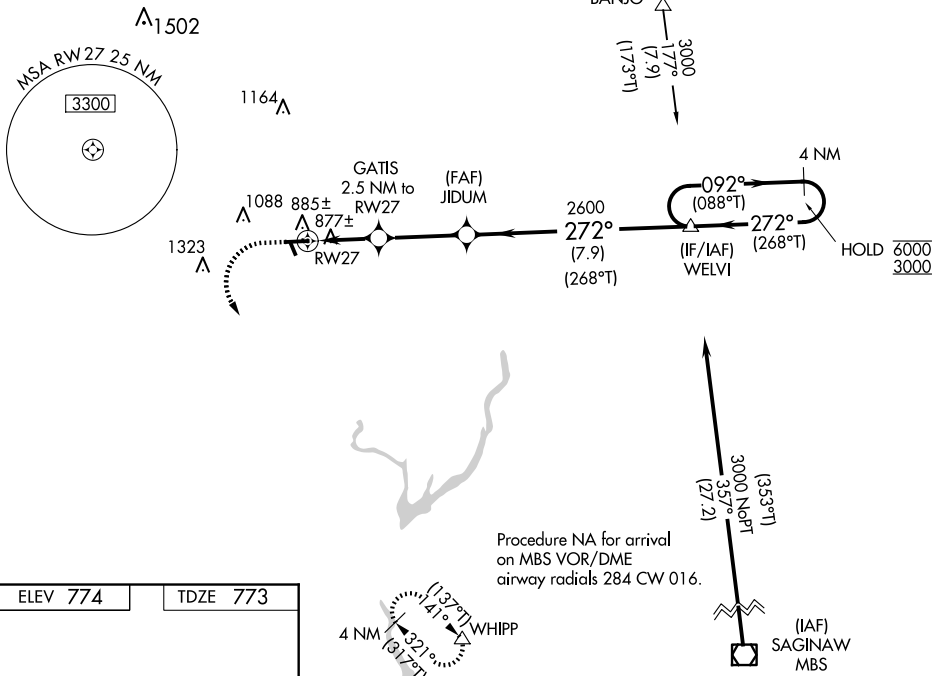
WAAS CH 99326 W27A	APP CRS 272°	Rwy ldg 4699 TDZE 773 Apt Elev 774
--	------------------------	---

RNAV (GPS) RWY 27

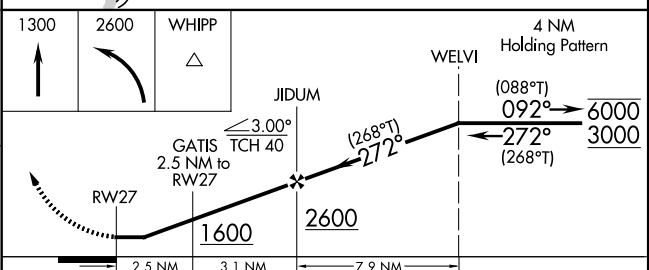
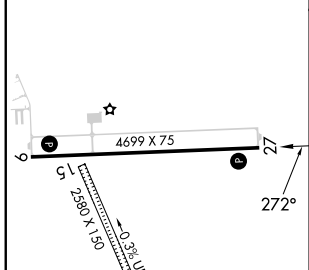
GLADWIN ZETTEL MEML (GDW)

RNP APCH - GPS.		MISSED APPROACH: Climb to 1300 then climbing left turn to 2600 direct WHIPP and hold.
<p>Procedure NA at night. Rwy 27 helicopter visibility reduction below 1 SM NA. Circling NA to Rwys 15 and 33. Use MOP altimeter setting; when not received, use KWW altimeter setting and increase all MDA 20 feet; increase LP and LNAV Cats C/D visibility 1/8 SM.</p>		
MOP AWOS-3 133.025	GREAT LAKES APP CON* 126.45 235.625	UNICOM 122.8 (CTAF) 0

PROTOTYPE-NOT FOR NAVIGATION

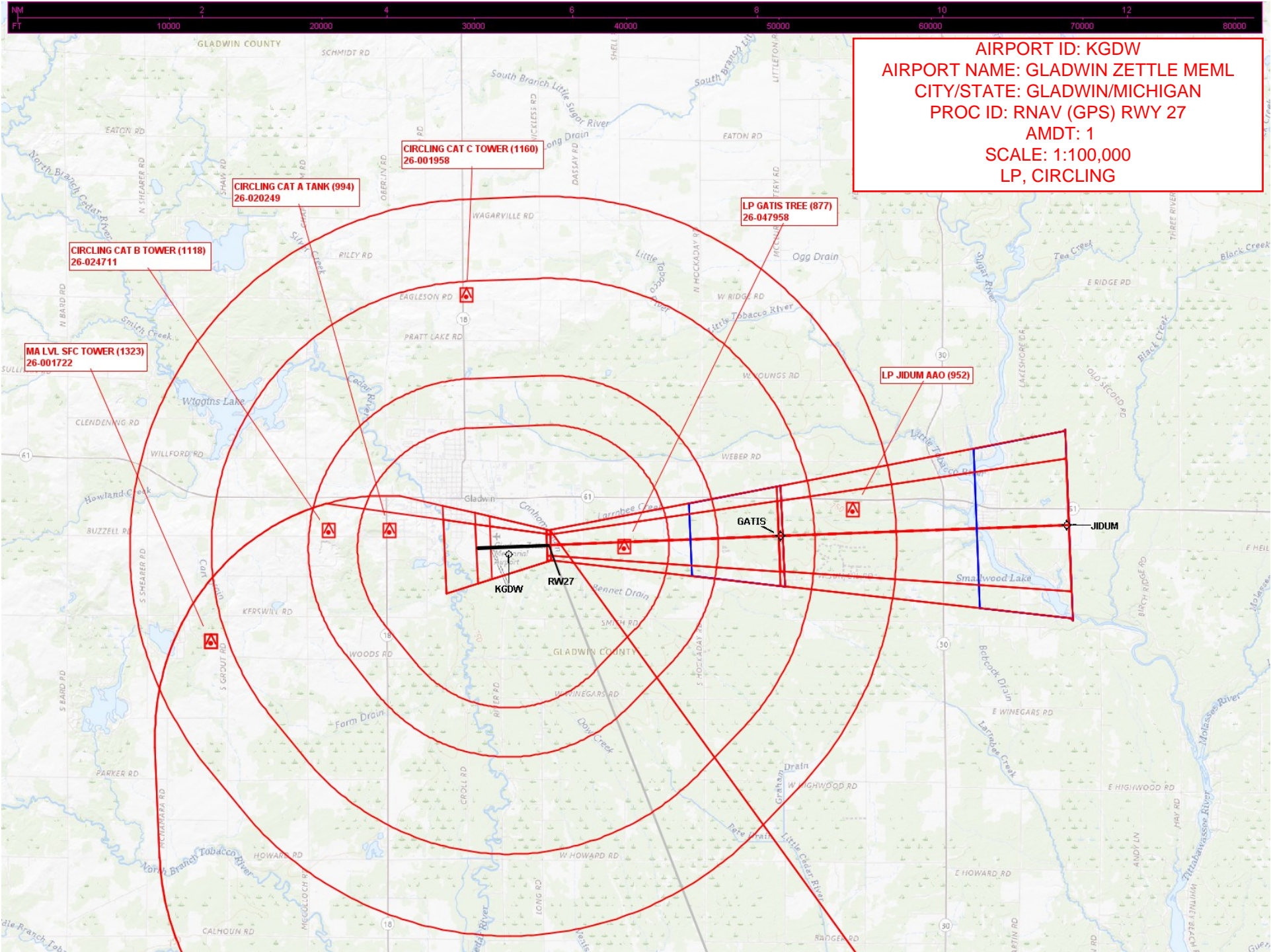


ELEV 774	TDZE 773
-----------------	-----------------



CATEGORY	A	B	C	D
LP MDA	1200-1	427 (500-1)	1200-1¼	427 (500-1¼)
LNAV MDA	1200-1	427 (500-1)	1200-1¼	427 (500-1¼)
CIRCLING	1360-1 586 (600-1)	1480-1 706 (800-1)	1520-2¼ 746 (800-2¼)	1700-3 926 (1000-3)

MIRL Rwy 9-27
REIL Rwys 9 and 27



AIRPORT ID: KGDW
AIRPORT NAME: GLADWIN ZETTLE MEML
CITY/STATE: GLADWIN/MICHIGAN
PROC ID: RNAV (GPS) RWY 27
AMDT: 1
SCALE: 1:100,000
LP, CIRCLING

MA LVL SFC TOWER (1323)
26-001722

CIRCLING CAT B TOWER (1118)
26-024711

CIRCLING CAT A TANK (994)
26-020249

CIRCLING CAT C TOWER (1160)
26-001958

LP GATIS TREE (877)
26-047958

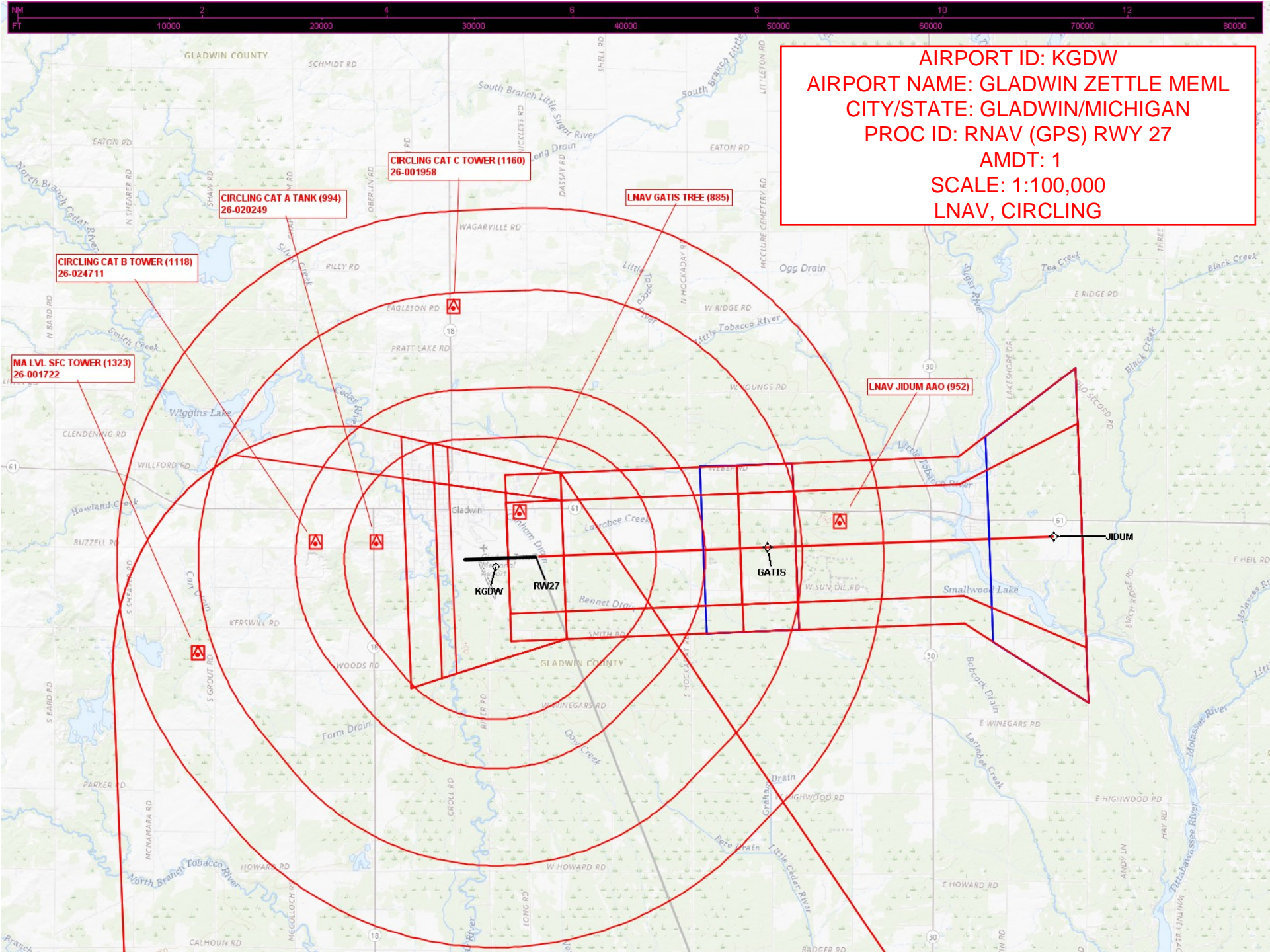
LP JIDUM AAO (952)

KGDW

RWY 27

GATIS

JIDUM



AIRPORT ID: KGDW
AIRPORT NAME: GLADWIN ZETTLE MEML
CITY/STATE: GLADWIN/MICHIGAN
PROC ID: RNAV (GPS) RWY 27
AMDT: 1
SCALE: 1:100,000
LNAV, CIRCLING

CIRCLING CAT C TOWER (1160)
26-001958

CIRCLING CAT A TANK (994)
26-020249

LNAV GATIS TREE (885)

CIRCLING CAT B TOWER (1118)
26-024711

MA LVL SFC TOWER (1323)
26-001722

LNAV JIDUM AAO (952)

KGDW

RW27

GATIS

JIDUM

AIRPORT ID: KGDW
AIRPORT NAME: GLADWIN ZETTEL MEML
CITY/STATE: GLADWIN/MICHIGAN
PROC ID: RNAV (GPS) RWY 27
AMDT: 1
SCALE: 1:500,000
FEEDER, INITIAL, H-I-L, INTERMEDIATE, FAF,
SD, MA, HOLD

