

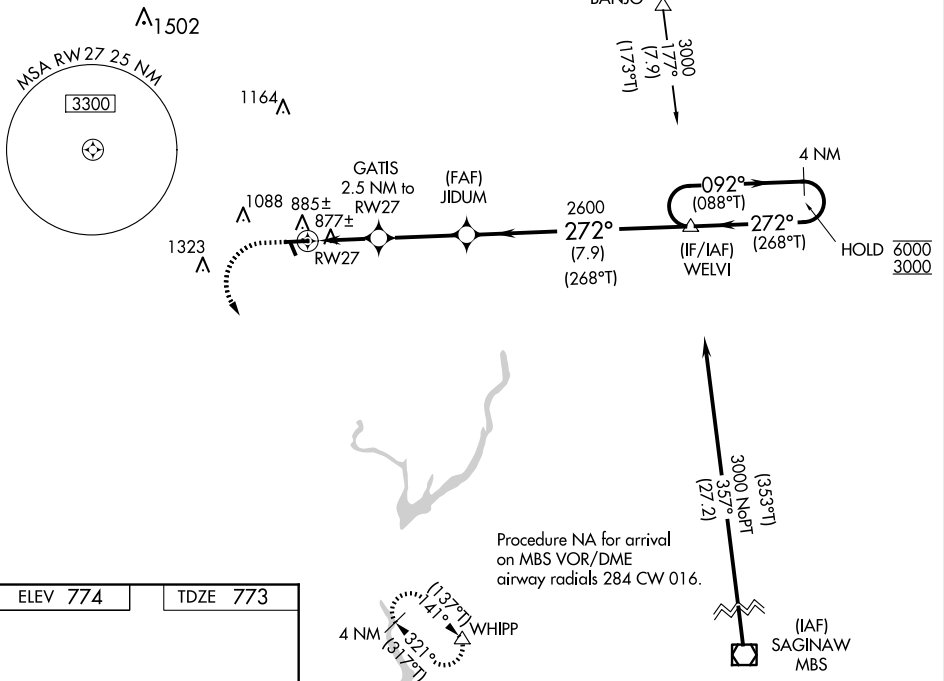
WAAS CH 99326 W27A	APP CRS 272°	Rwy ldg 4699 TDZE 773 Apt Elev 774
--	------------------------	---

RNAV (GPS) RWY 27

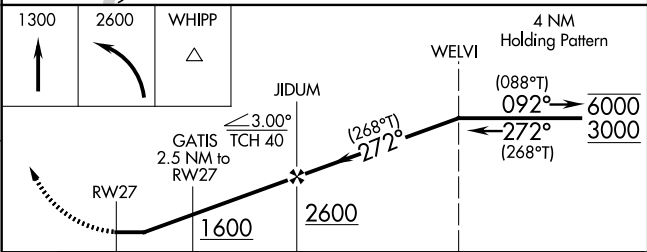
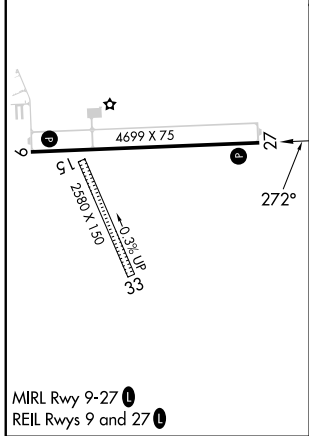
GLADWIN ZETTEL MEML (GDW)

RNP APCH - GPS.		MISSED APPROACH: Climb to 1300 then climbing left turn to 2600 direct WHIPP and hold.
<p>▼ NA Procedure NA at night. Rwy 27 helicopter visibility reduction below 1 SM NA. Circling NA to Rwys 15 and 33. Use MOP altimeter setting; when not received, use IKW altimeter setting and increase all MDA 20 feet; increase LP and LNAV Cats C/D visibility 1/8 SM.</p>	<p>GREAT LAKES APP CON * 126.45 235.625</p>	<p>UNICOM 122.8 (CTAF) 0</p>
<p>MOP AWOS-3 133.025</p>		

PROTOTYPE-NOT FOR NAVIGATION



ELEV 774	TDZE 773
-----------------	-----------------



CATEGORY	A	B	C	D
LP MDA	1200-1	427 (500-1)	1200-1¼	427 (500-1¼)
LNAV MDA	1200-1	427 (500-1)	1200-1¼	427 (500-1¼)
CIRCLING	1360-1 586 (600-1)	1480-1 706 (800-1)	1520-2¼ 746 (800-2¼)	1700-3 926 (1000-3)