

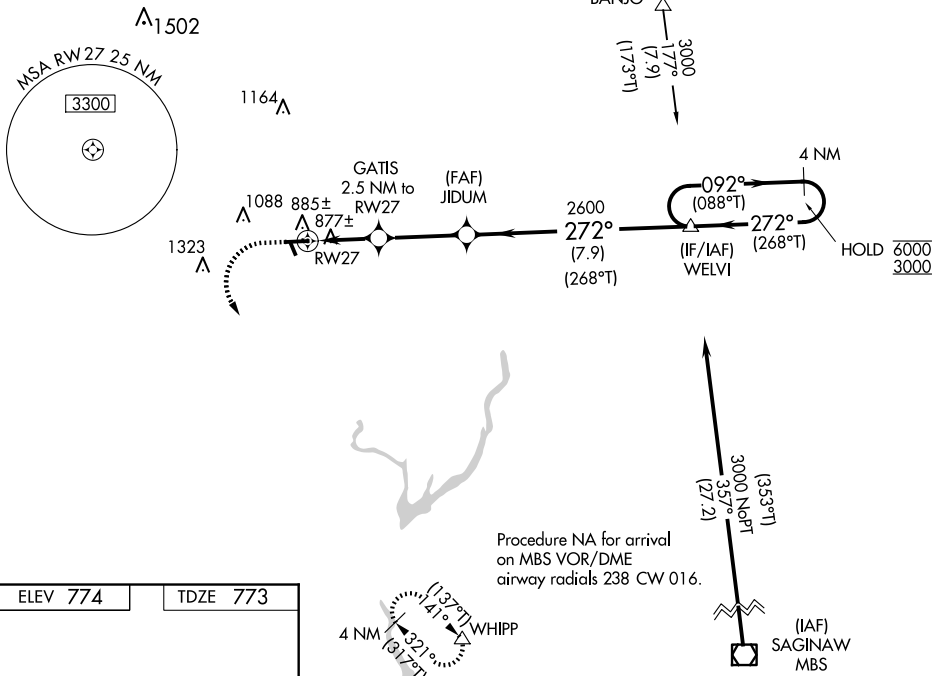
WAAS CH <b>99326</b> <b>W27A</b>	APP CRS <b>272°</b>	Rwy ldg <b>4699</b> TDZE <b>773</b> Apt Elev <b>774</b>
--	------------------------	---

# RNAV (GPS) RWY 27

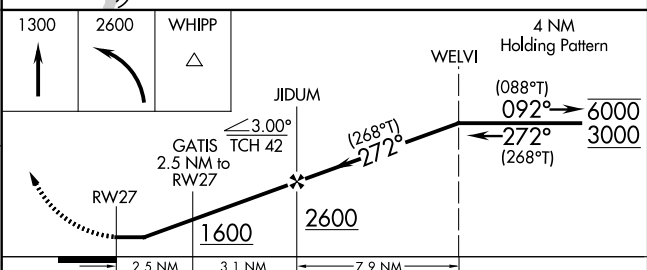
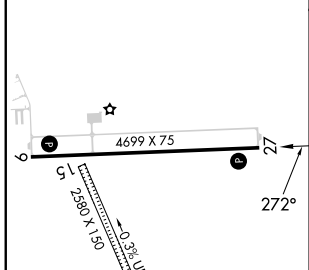
GLADWIN ZETTEL MEML (GDW)

RNP APCH - GPS.		MISSED APPROACH: Climbing left turn to 2600 direct WHIPP and hold.
<p><b>NA</b> Procedure NA at night. Rwy 27 helicopter visibility reduction below 1 SM NA. Circling NA to Rwys 15 and 33. When local altimeter setting not received, use MOP altimeter setting and increase all MDAs 60 feet and LP and LNAV Cats C/D visibility ¼ SM; and circling visibility Cats C/D ¼ SM.</p>		
MOP AWOS-3 <b>133.025</b>	GREAT LAKES APP CON* <b>126.45 235.625</b>	UNICOM <b>122.8 (CTAF) 0</b>

## PROTOTYPE-NOT FOR NAVIGATION



ELEV <b>774</b>	TDZE <b>773</b>
-----------------	-----------------



CATEGORY	A	B	C	D
LP MDA		1140-1	367 (400-1)	
LNAV MDA		1140-1	367 (400-1)	
CIRCLING	1300-1 562 (600-1)	1420-1 646 (700-1)	1500-2 726 (800-2)	1640-2 3/4 866 (1000-23/4)

MIRL Rwy 9-27  
REIL Rws 9 and 27