

Flight Procedures Cover Page	Task Action: FLIGHT CHECK	Task Type: IAP	Estimated Chart Date: 06/15/2023	APWS Task ID: 10B83A757CB04A2B84AF9B131CAC43A3	APWS Project ID: D85DA1B64E584328A434CEF169BCFAA5
Procedure: HI - VOR Y OR TACAN Y RWY 26 AMDT 9		Enroute: NO	Specialist: Campbell, Richard		Agreement Number:
Airport ID: KFSM			Airport City: FORT SMITH		State: AR
Facility ID: FSM	Facility Type: VORTAC	Flight Inspection Remark Type: New FC Slot			

Procedure Comments:  
RWY 26 EXTENSION WITH NAVAID RELOCATION

PENDING DATA (06/15/2023) USED FOR KFSM

CONTACT: ALLAN WILL AJV-A423 LEAD: (405) 954-6103

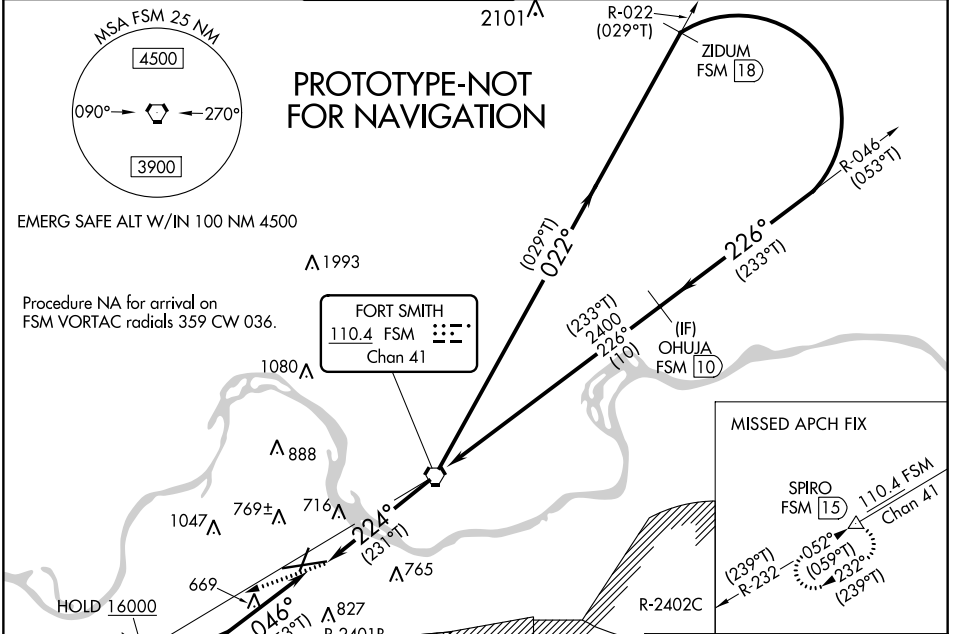


VORTAC FSM <b>110.4</b> Chan <b>41</b>	APP CRS <b>224°</b>	Rwy Idg <b>9318</b> TDZE <b>448</b> Apt Elev <b>469</b>
--	------------------------	---

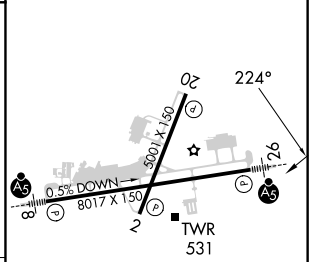
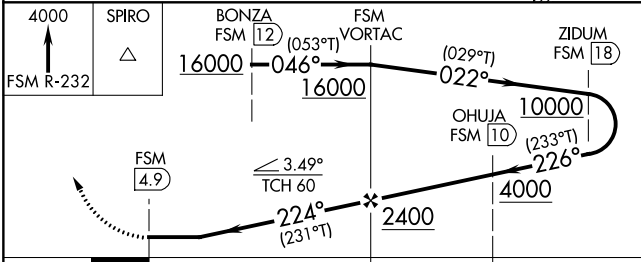
# HI-VOR Y or TACAN Y RWY 26

FORT SMITH RGNL (F'SM)

DME Required.		<b>FORT SMITH TOWER *</b> <b>118.3 (CTAF) 323.175</b>		GND CON <b>121.9 275.8</b>	CLNC DEL <b>133.85 278.3</b>	UNICOM <b>122.95</b>
⚠ Rwy 26 helicopter visibility reduction below 1 SM NA. Inop table does not apply. Circling NA for Cat E north of Rwy 8 and west of Rwy 20. Circling NA for Cat E when R-2401B active. Straight-In Rwy 26 NA at night, Circling Rwy 20, 26 NA at night.		MALSR 		MISSED APPROACH: Climb to 4000 on FSM VORTAC R-232 to SPIRO/15 DME and hold, continue climb-in-hold to 4000.		



ELEV 469	<b>D</b>	TDZE 448
----------	----------	----------



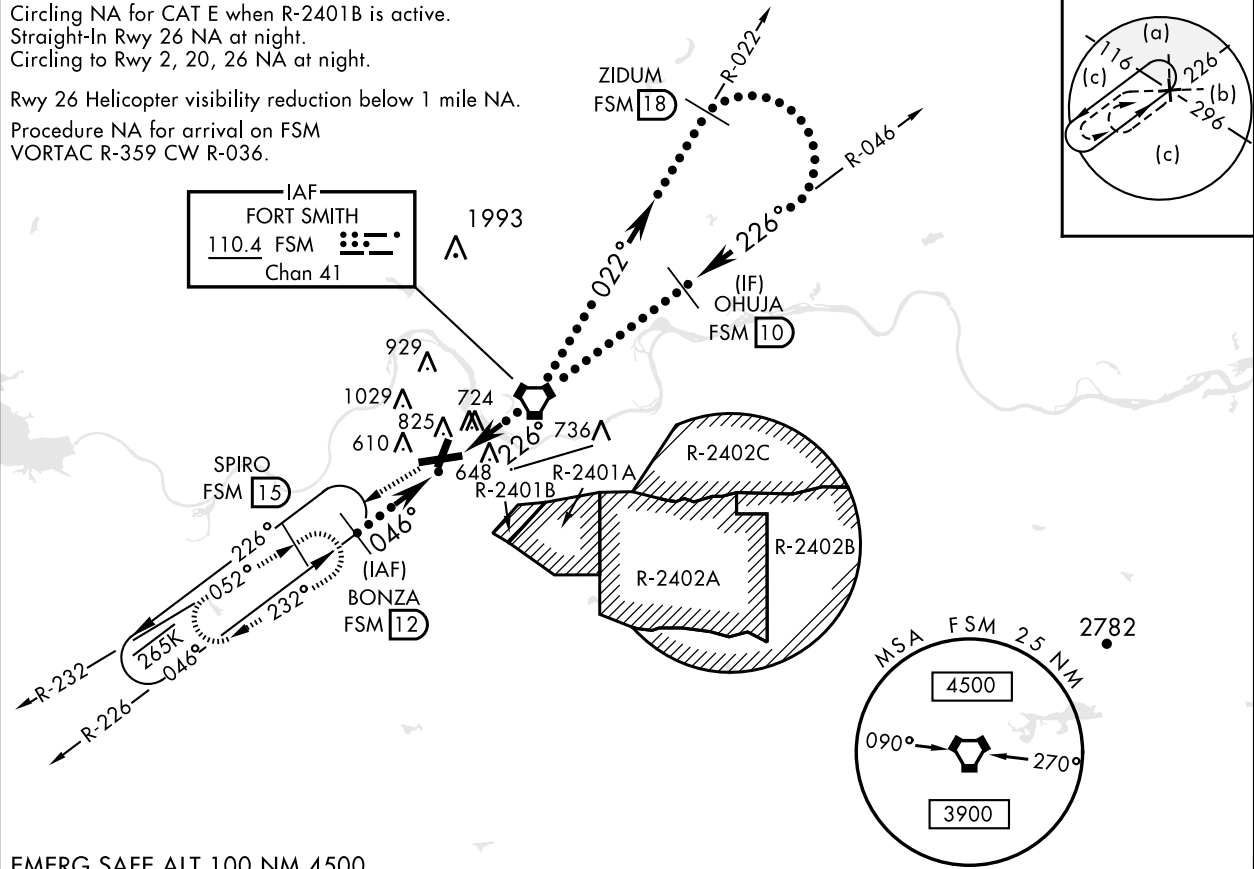
CATEGORY	A	B	C	D	E
S-26	NA		980-1½	532 (600-1½)	
CIRCLING	NA		1400-2 931 (1000-2)	1400-2¼ 931 (1000-2¼)	1400-2¾ 931 (1000-2¾)

HIRL Rwy 8-26  
MIRL Rwy 2-20

# HI-VOR Y or TACAN Y RWY 26

VORTAC FSM <b>110.4</b> Chan <b>41</b>	APCH CRS <b>226°</b>	Rwy Idg <b>8017</b> TDZE <b>446</b> Arprt Elev <b>469</b>	<b>OLD</b> AL-631 [USAF]	FORT SMITH RGNL (KFMS)	
DME required.			MALSRS A5	MISSED APPROACH: Climb to 4000 on FSM VORTAC R-232 to SPIRO (FSM R-232/15 DME) and hold, continue climb in hold to 4000.	
* Circling NA for CAT E N of Rwy 8 and W of Rwy 20.					
ATIS <b>126.3</b>	RAZORBACK APP CON <b>120.9 343.75</b>	TOWER ★ <b>118.3 (CTAF) 323.175</b>	GND CON <b>121.9 275.8</b>	CLNC DEL <b>133.85 278.3</b>	

Circling NA for CAT E when R-2401B is active.  
Straight-In Rwy 26 NA at night.  
Circling to Rwy 2, 20, 26 NA at night.  
Rwy 26 Helicopter visibility reduction below 1 mile NA.  
Procedure NA for arrival on FSM VORTAC R-359 CW R-036.



EMERG SAFE ALT 100 NM 4500

VGSi and ILS glidepath coincident. (VGSi Angle 2.96/TCH 53).			4000	SPIRO	ELEV 469	TDZE 446
			↑ FSM R-232	FSM 15		
CATEGORY	C	D	E			
S-26	980-1½	534 (600-1½)		MIRL Rwy 2-20 HIRL Rwy 8-26		
CIRCLING *	1400-2 931 (1000-2)	1140-2¼ 931 (1000-2¼)	1400-2¾ 931 (1000-2¾)			

# OLD HI-VOR Y or TACAN Y RWY 26

SC-1, 26 JAN 2023 to 23 FEB 2023

SC-1, 26 JAN 2023 to 23 FEB 2023

NM 2 4 6 8 10 12  
FT 20000 40000 60000 80000

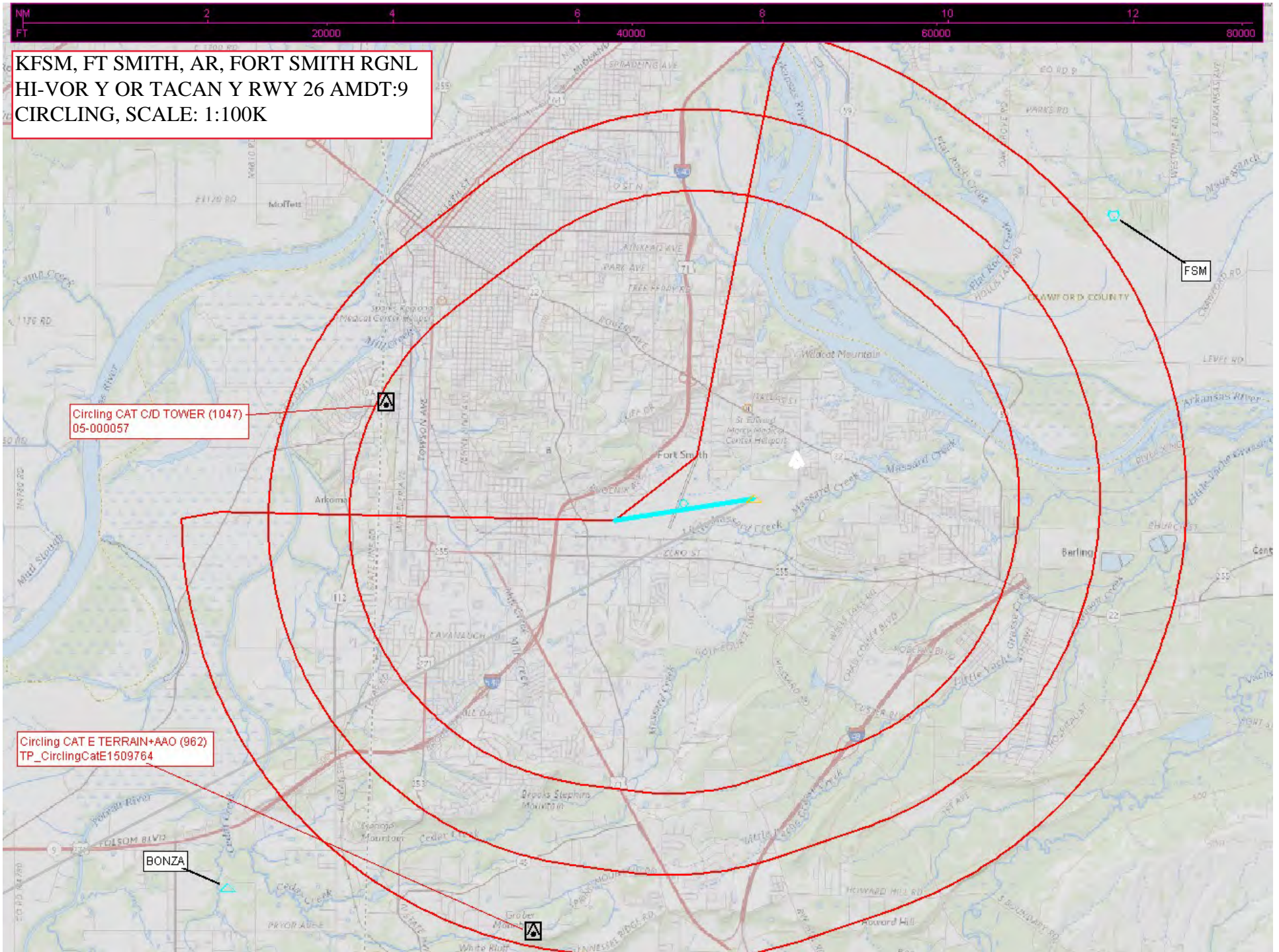
KFSM, FT SMITH, AR, FORT SMITH RGNL  
HI-VOR Y OR TACAN Y RWY 26 AMDT:9  
CIRCLING, SCALE: 1:100K

Circling CAT C/D TOWER (1047)  
05-000057

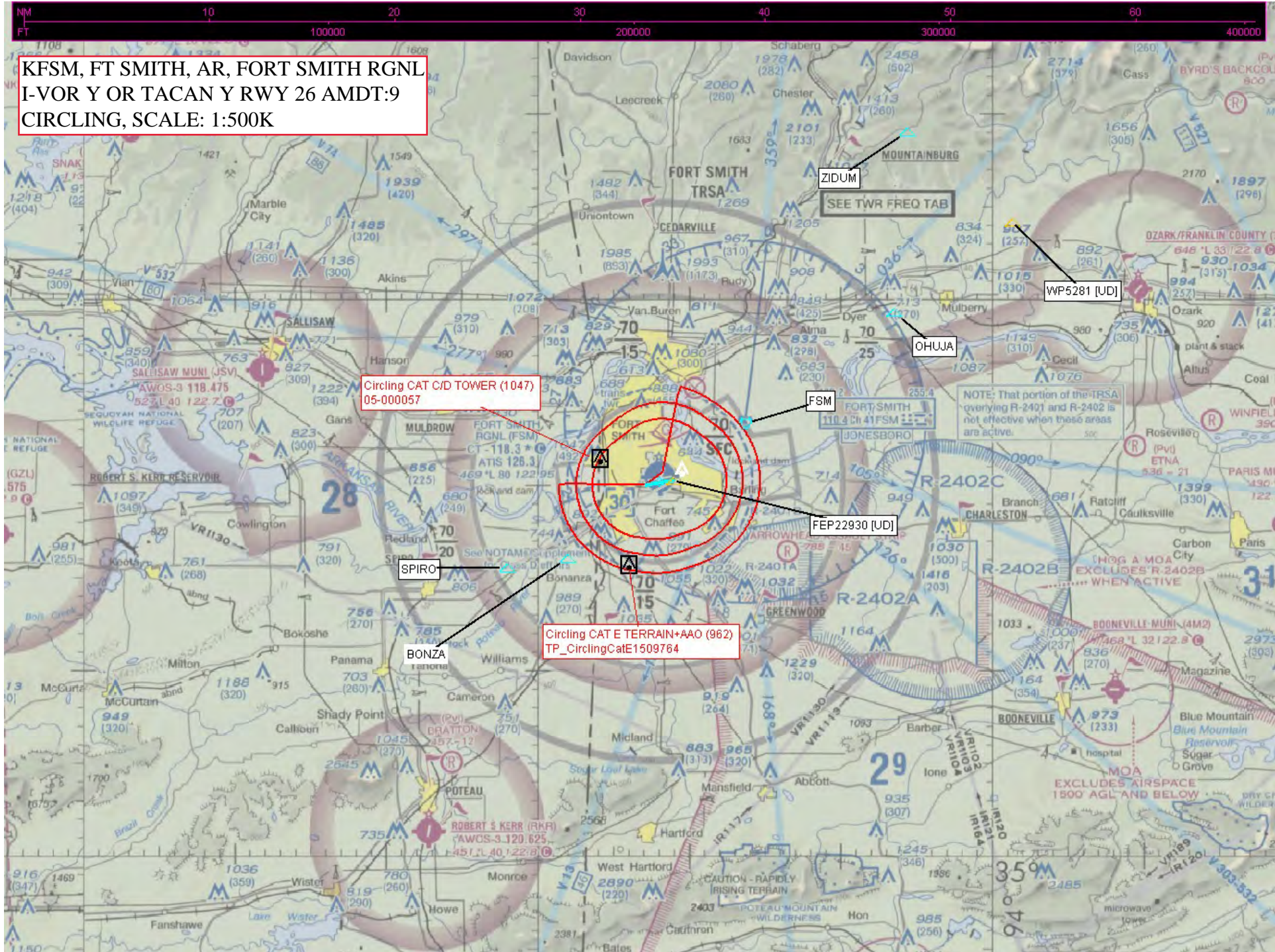
Circling CAT E TERRAIN+AAO (962)  
TP\_CirclingCatE1509764

BONZA

FSM



KFSM, FT SMITH, AR, FORT SMITH RGNL  
I-VOR Y OR TACAN Y RWY 26 AMDT:9  
CIRCLING, SCALE: 1:500K



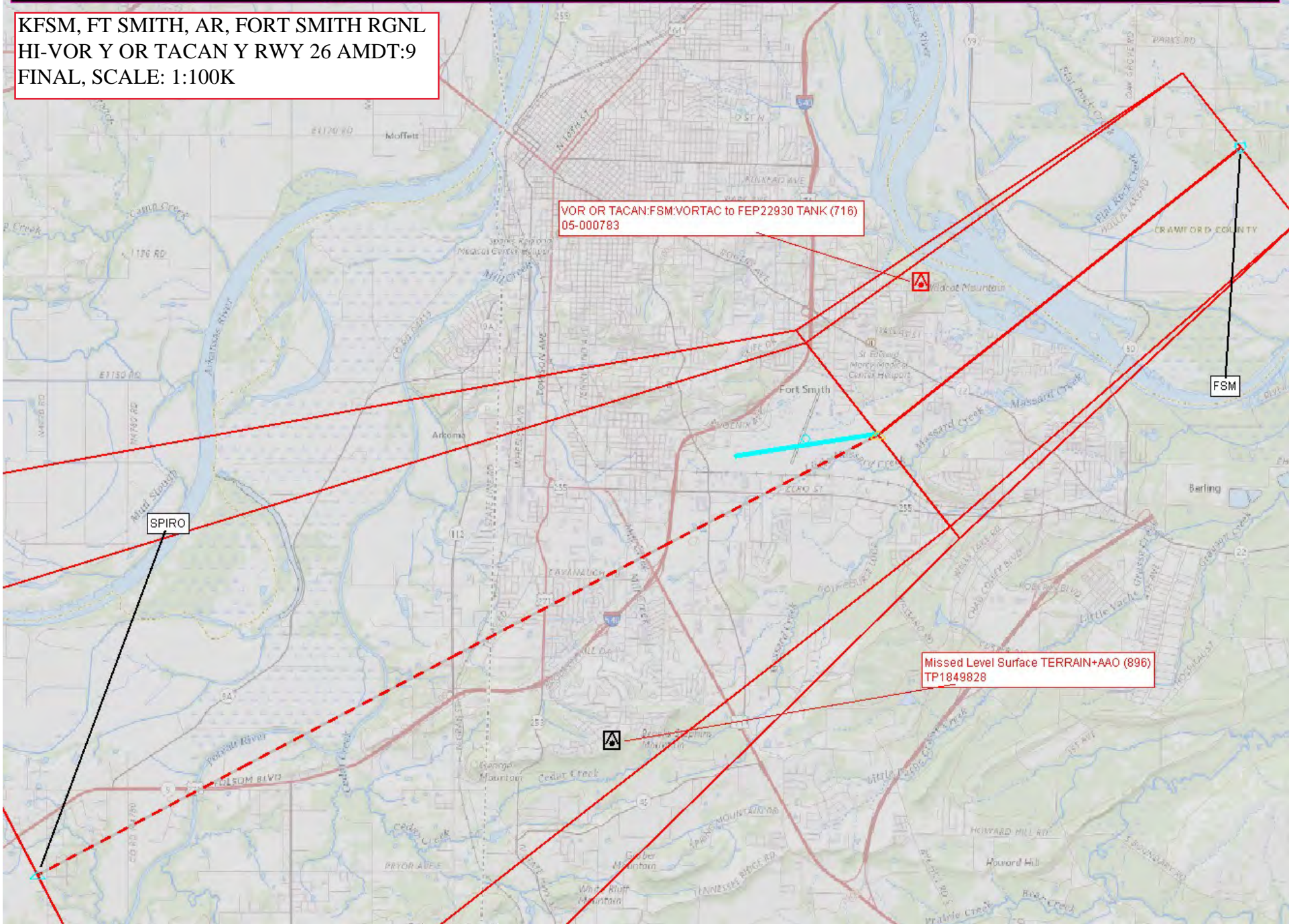
KFSM, FT SMITH, AR, FORT SMITH RGNL  
HI-VOR Y OR TACAN Y RWY 26 AMDT:9  
FINAL, SCALE: 1:100K

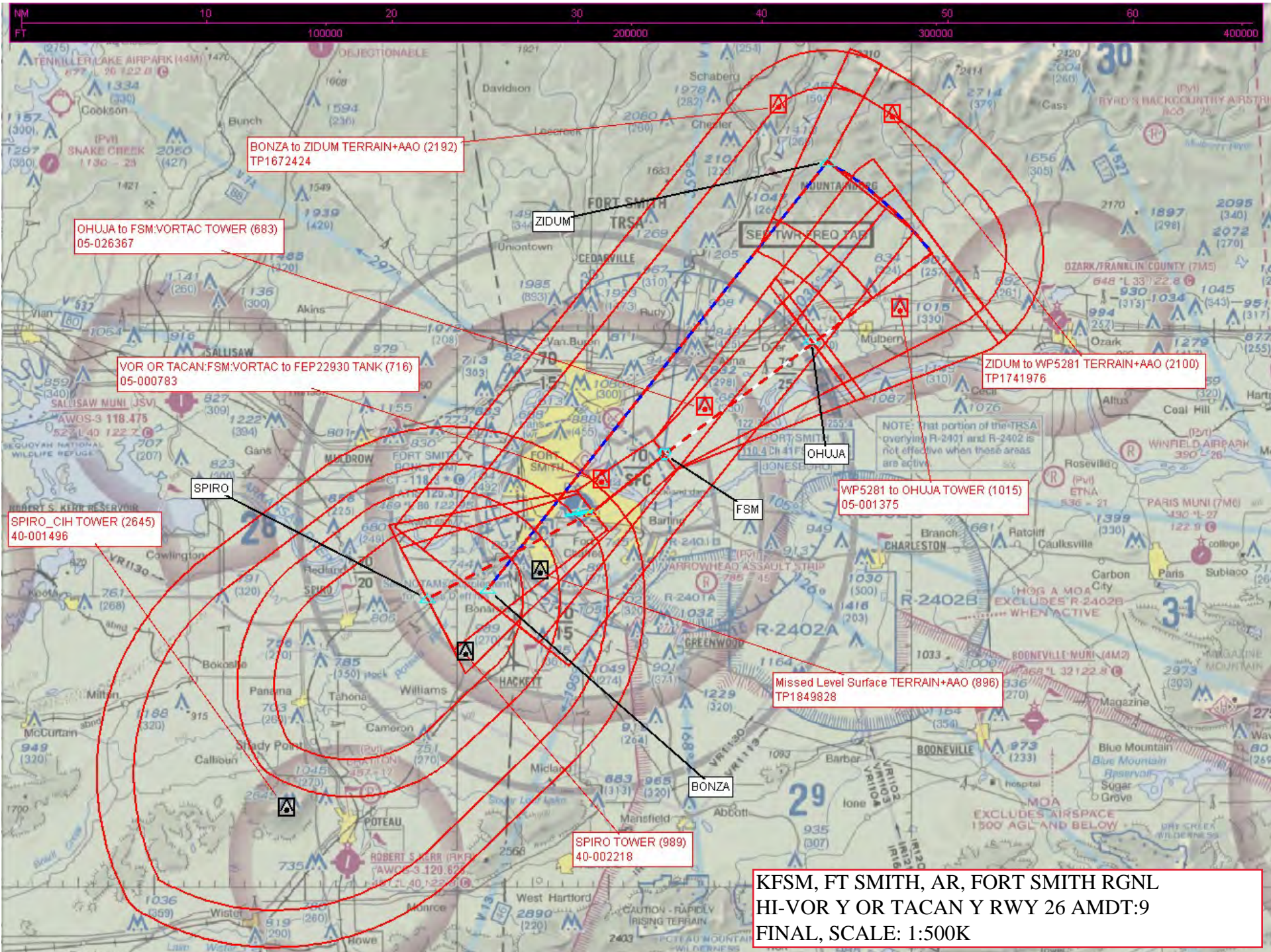
VOR OR TACAN:FSM.VORTAC to FEP22930 TANK (716)  
05-000783

FSM

SPIRO

Missed Level Surface TERRAIN+AO (896)  
TP1849828





KFSM, FT SMITH, AR, FORT SMITH RGNL  
 HI-VOR Y OR TACAN Y RWY 26 AMDT:9  
 FINAL, SCALE: 1:500K