

| | | | | | |
|---|-------------------------|--------------------------------|-------------------------------------|---|--|
| Flight Procedures Cover Page | Task Action: P-NOTAM | Task Type: IAP | Estimated Chart Date: 07/09/2026 | APWS Task ID: 10D8183060CC464C815F58A71D225C0C | APWS Project ID: FA27BF5B6C374DBF8D48191520626D7C |
| Procedure: RNAV (GPS) RWY 26 AMDT 0C | | Enroute: NO | Specialist: Johnson, Timothy | | Agreement Number: |
| Airport ID: KBWC | | | Airport City: BRAWLEY | | State: CA |
| Facility ID: | Facility Type: | Flight Inspection Remark Type: | | | |

Procedure Comments:

Visibility Initiative (Garmin) - Update IAP visibility minimums IAW Order 8260.3, Chapter 3, Section 3-3. Visibility Minimums.

PROCESSED IAW TECHNICAL SUPPORT GROUP (AJF-17) MEMO DATED 07/07/2021, SUBJECT: GUIDANCE FOR PROCEDURAL CHANGES REQUIRING FLIGHT INSPECTION/VALIDATION.

CONTACT: CASEY HILL (405) 954-0624.

QUALITY
6 SN 2/26/26
CHECKED

QUALITY
29
CHECKED

OLD

BRAWLEY, CALIFORNIA

AL-6932 (FAA)

26022

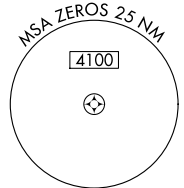
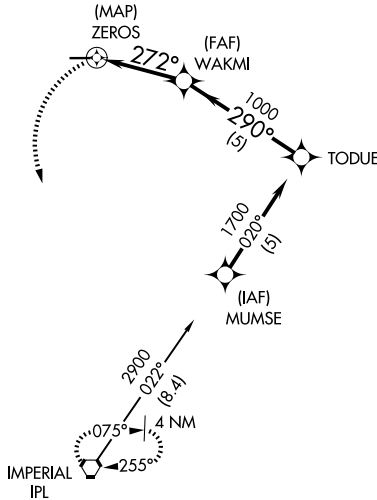
| | | |
|-------------|----------|-------------|
| APP CRS | Rwy Ldg | 4006 |
| 272° | TDZE | -129 |
| | Apt Elev | -128 |

RNAV (GPS) RWY 26

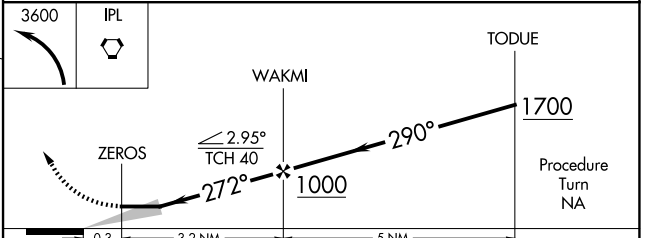
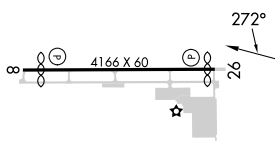
BRAWLEY MUNI (BWC)

| | |
|----------------------------------|---|
| RNP APCH - GPS. | MISSED APPROACH: Climbing left turn to 3600 direct IPL VORTAC and hold. |
| ▼ Use IPL altimeter setting. | |
| ▲ NA Circling Rwy 8 NA at night. | |

| | | |
|----------------------------|------------------------------------|----------------------|
| IPL ASOS 132.175 | YUMA CERAP 132.275 292.2 | CTAF 122.9 |
|----------------------------|------------------------------------|----------------------|



| | |
|-----------|-----------|
| ELEV -128 | TDZE -129 |
|-----------|-----------|



| | | | | |
|----------|-------|-------------|------------------------|----|
| CATEGORY | A | B | C | D |
| LNAV MDA | 360-1 | 489 (500-1) | 360-1¼ 489 (500-1¼) | NA |
| CIRCLING | 560-1 | 688 (700-1) | 560-2 688 (700-2) | NA |

REIL Rws 8 and 26
MIRL Rwy 8-26

BRAWLEY, CALIFORNIA
Orig-B 02OCT25

33°00'N-115°31'W

RNAV (GPS) RWY 26

SW-3, 19 FEB 2026 to 19 MAR 2026

SW-3, 19 FEB 2026 to 19 MAR 2026