

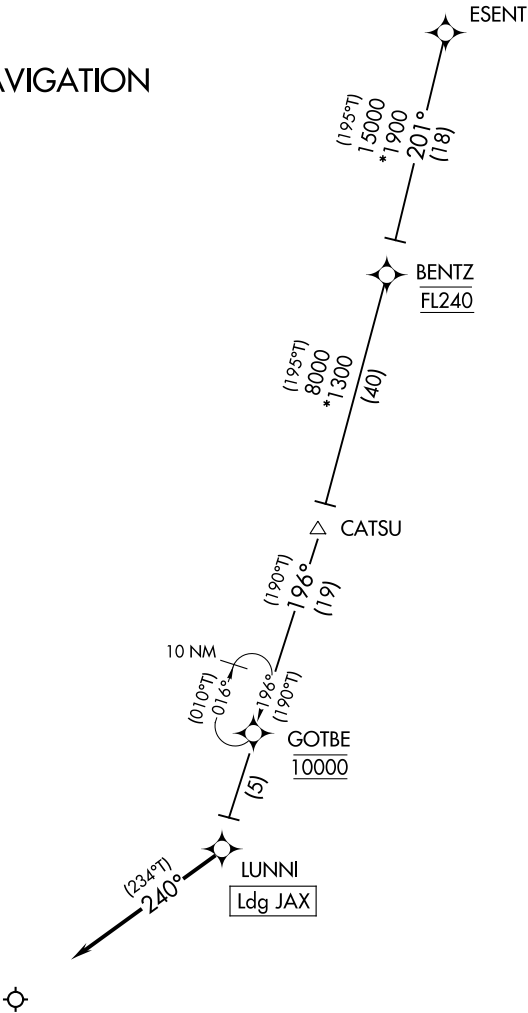
Flight Procedures Cover Page	Task Action: FLIGHT CHECK	Task Type: STAR	Estimated Chart Date: 12/26/2024	APWS Task ID: 1101BF4AA9F14F7F896853836B7CEBC9	APWS Project ID: 851B677965664C59B0DC7A6AD48581F6
Procedure: JAX LUNNI TWO (RNAV) ARRIVAL		Enroute: YES	Specialist: Prassada, Parnell		Agreement Number:
Airport ID: KJAX			Airport City: JACKSONVILLE		State: FL
Facility ID:	Facility Type:	Flight Inspection Remark Type: New FC Slot			
<div>Procedure Comments:</div> <div>THIS CANCELS NOTAM 3/8983</div> <div>CONTACT: ERIC SUSKI (405) 954-7331</div> <div>01/31/25: THIS IS AN UPDATED COPY OF THE FORM DEVELOPED ON 05/24/2024.</div> <div>1. RAISED MOCA FROM 1900 TO 2500 AT BENTZ.</div> <div>2. RAISED MOCA FROM 1300 TO 2500 AT CATSU.</div> <div>QUALITY 16 CHECKED</div> <div>QUALITY 35 CHECKED</div> <div>QUALITY 38 CHECKED</div>					

FIPC DME/DME FORM							
PROCEDURE: STAR JAX LUNNI TWO (RNAV) ARRIVAL			AIRPORT NAME: JACKSONVILLE INTL		AIRPORT ID: KJAX	SPECIAL CONTROL NO: AG-09-011-24	
FAC ID: LUNNI2		CITY: JACKSONVILLE			ST: FL	ORIG CHART DATE: 12/26/2024	
DFL TYPE: PROC/D	THIRD PARTY: <input type="checkbox"/> YES	EST. TIME ON SITE: 1.0	REIMB. NUMBER:		PTS TASK ID: 1101BF4AA9F14F7F896853836B7CEBC9		
PREFLIGHT NOTES							
REVIEWER:					DATE:		
COMMENTS:					CHECK ONE:		
					<input type="checkbox"/> FLT CK REQ <input type="checkbox"/> NFCR <input type="checkbox"/> REJECT		
							YES
					CPV COMPLETE?		X
PROCEDURE RESULTS							
INSPECTION DATE: 01/27/2025		CREW #: VN526	N #:	INSTRUMENT PROCEDURE STATUS: <input type="checkbox"/> SAT <input checked="" type="checkbox"/> SAT W/CHANGES <input type="checkbox"/> UNSAT		ARINC CODING: <input checked="" type="checkbox"/> SAT <input type="checkbox"/> SAT/GOLD <input type="checkbox"/> UNSAT	
FLIGHT INSPECTOR SIGNATURE: james r jones @ 01/28/2025 08:49			PRINTED NAME: GEYER, ERIC LEE				NOTAM INITIATED? <input type="checkbox"/> YES <input checked="" type="checkbox"/> NO
FLIGHT INSPECTOR REMARKS: Jacksonville INTL, Jacksonville, FL, JAX LUNNI TWO (RNAV) ARRIVAL, SAT w/changes. All changes are within 2NM of previous route and at or above previous altitudes. SAT with change: Raise MOCA to 2500ft. JAX TRACON confirms radio coverage to 2500ft.							
DME/DME STATUS: <input type="checkbox"/> SAT <input type="checkbox"/> UNSAT		SPECIALIST SIGNATURE:			PRINTED NAME:		
SPECIALIST REMARKS:							
IN-FLIGHT OBSTACLE REPORT							
OBSTRUCTION ID #:	COORDINATES OR LOCATION:		GNSS ALTITUDE (MSL):		BAROMETRIC ALTITUDE (MSL):		HEIGHT ABOVE GROUND LEVEL:

JACKSONVILLE APP CON
119.0 127.0 269.9 292.15 (270°-090°)
127.775 377.075 (181°-269°)
124.9 308.4 (091°-180°)
D-ATIS 125.85

RNAV 1- DME/DME/IRU or GPS.
RADAR required.

PROTOTYPE-NOT FOR NAVIGATION



NOTE: Jet aircraft only.

ARRIVAL ROUTE DESCRIPTION

ESENT TRANSITION (ESENT.LUNNI2)

From CATSU on track 196° to cross GOTBE at 10000, then on track 196° to LUNNI, then on track 240°. Expect RADAR vectors to final approach course.

NOTE: Chart not to scale.



Federal Aviation Administration

Memorandum

Date: July 18, 2023

To: Instrument Flight Procedures Service Providers

From: Eric S. Parker, Acting Manager, Flight Technologies and Procedures Division

Subject: Waiver to FAA Order 8260.3, United States Standard for Terminal Instrument Procedures (TERPS), STAR Termination Altitude

This memorandum waives the requirement of FAA Order 8260.3 paragraph 2-2-7.f(2) for Flight Standards approval when, due to an operational need, an altitude is not established at the termination fix on a STAR that does not join an approach.

Establishing an altitude at the termination fix on STAR that does not join an approach is beneficial for arrival descent planning purposes and is highly encouraged where practical. We recommend consulting Flight Standards, Flight Procedures and Airspace Group early in the design phase to assist in understanding how an altitude at a termination fix benefits operators.

No additional waiver request action is required. Please direct all inquiries to the Flight Procedures and Airspace Group, Standards Section (405) 954-1139 or 9-AWA-AVS-AFS420@faa.gov.



Federal Aviation Administration

Memorandum

Date: July 18, 2023

To: Instrument Flight Procedures Service Providers

From: Eric S. Parker, Acting Manager, Flight Technologies and Procedures Division

Subject: Waiver to FAA Order 8260.19, Flight Procedures and Airspace, STAR Termination Altitude

This memorandum waives the requirement of FAA Order 8260.19 paragraph 4-5-2.j for an altitude to be specified at the termination fix at the STAR termination point [see memo dated July 18, 2023, subject: Waiver to FAA Order 8260.3, paragraph 2-2-7.f(2)].

When no altitude is specified at that fix, the lowest altitude that will be assigned by air traffic control at the termination fix must be used for descent gradient and obstacle clearance calculations and noted in the Remarks section of Form 8260-17.1. Example: LOWEST ASSIGNED ATC ALTITUDE AT GIZMO, 3000.

No additional waiver request action is required. Please direct all inquiries to the Flight Procedures and Airspace, Standards Section (405) 954-1139 or 9-AWA-AVS-AFS420@faa.gov.

(LUNNI.LUNNI1) 18088

AL-5570 (FAA)

JACKSONVILLE INTL (JAX)
JACKSONVILLE, FLORIDA

LUNNI ONE ARRIVAL (RNAV)

JACKSONVILLE APP CON
119.0 127.0 269.9 292.15 (270°-090°)
127.775 377.075 (181°-269°)
124.9 308.4 (091°-180°)
D-ATIS 125.85

ARRIVAL ROUTE DESCRIPTION

ESENT TRANSITION (ESENT.LUNNI1)

From GOTBE on track 201° to cross LUNNI between 8000 and 12000 and at 250K.

LANDING RWY 8: From LUNNI on track 242° to cross SAVAE between 6000 and 7000, then on track 242° to cross PENSE at 4000 and at 210K, then on track 232° to RUMEE, then on 257° heading or as assigned by ATC. Expect radar vectors to final approach course.

LANDING RWY 14: From LUNNI on track 244° to cross WADIG between 5000 and 6000 and at 230K, then on track 244° to cross DEDDA at 3000 and at 210K. Expect radar vectors to RNAV (RNP)/Visual approach as assigned by ATC.

LANDING RWY 26: From LUNNI on track 222° to cross LAYON at 3000 and at or below 210K. Expect radar vectors to RNAV (RNP)/Visual approach as assigned by ATC.

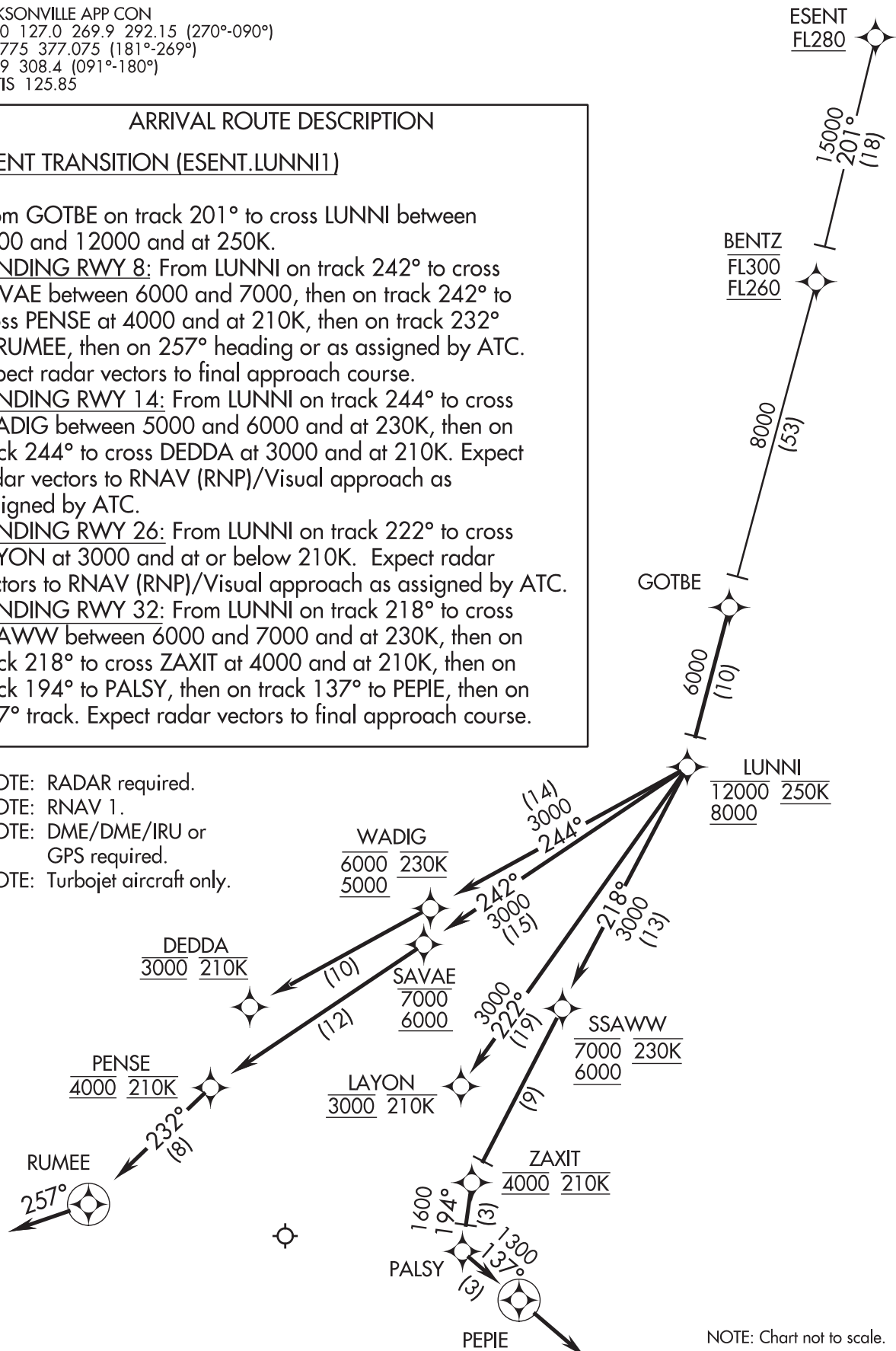
LANDING RWY 32: From LUNNI on track 218° to cross SSAWW between 6000 and 7000 and at 230K, then on track 218° to cross ZAXIT at 4000 and at 210K, then on track 194° to PALS, then on track 137° to PEPIE, then on 137° track. Expect radar vectors to final approach course.

NOTE: RADAR required.

NOTE: RNAV 1.

NOTE: DME/DME/IRU or
GPS required.

NOTE: Turbojet aircraft only.



NOTE: Chart not to scale.

LUNNI ONE ARRIVAL (RNAV)

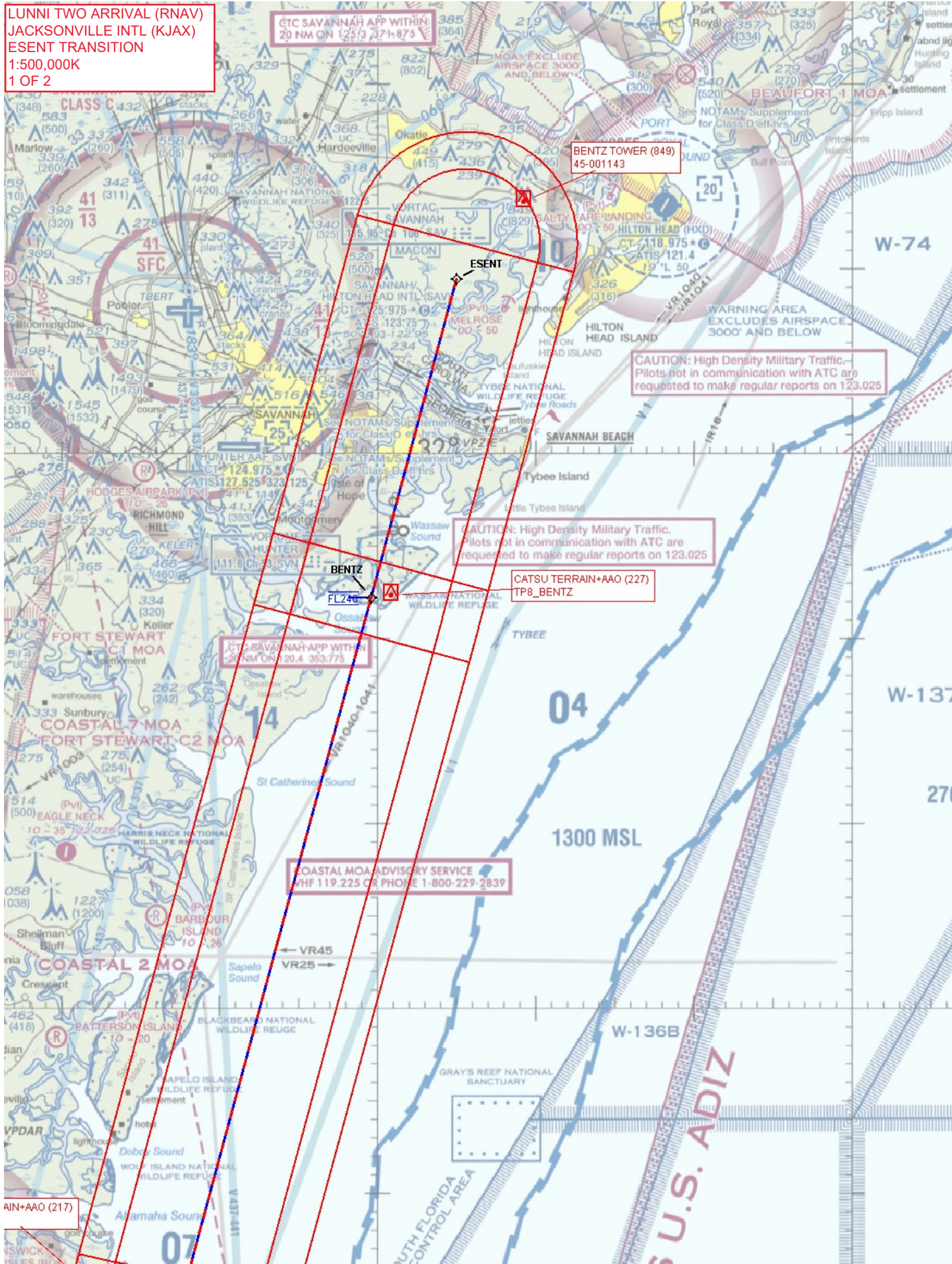
(LUNNI.LUNNI1) 17OCT13

JACKSONVILLE, FLORIDA
JACKSONVILLE INTL (JAX)

SE-3, 16 MAY 2024 to 13 JUN 2024

SE-3, 16 MAY 2024 to 13 JUN 2024

LUNNI TWO ARRIVAL (RNAV)
JACKSONVILLE INTL (KJAX)
ESENT TRANSITION
1:500,000K
1 OF 2



LUNNI TWO ARRIVAL (RNAV)
JACKSONVILLE INTL (KJAX)
ESENT TRANSITION
1:500,000K
2 OF 2

COASTAL MOA ADVISORY SERVICE
WHF 119.225 OR PHONE 1-800-229-2839

GOTBE TERRAIN+AAO (217)
TP1_CATSU

LUNNI TERRAIN+AAO (200)
TP0_GOTBE

CTC JACKSONVILLE APP WITHIN
20 NM ON 127.0 292.15

JACKSONVILLE INSET
See inset chart for additional detail

MAYPORT HIGH MOA
MAYPORT LOW MOA

CONTIGUOUS U.S. ADIZ



LUNNI TWO ARRIVAL (RNAV)
JACKSONVILLE INTL (KJAX)
GOTBE HOLD
1:500,000K

GOTBE TERRAIN+AAO (217)
TP1_CATSU

GOTBE HOLD TOWER (347)
13-000418

LUNNI TERRAIN+AAO (200)
TP0_GOTBE

CTO JACKSONVILLE APP WITHIN
20 NM ON 127.00 29248

JACKSONVILLE INSET
See inset chart for additional detail

See NOTAMS/Supplement
for Class D/E (sf) eff hrs