

Flight Procedures Cover Page	Task Action: FLIGHT CHECK	Task Type: IAP	Estimated Chart Date: 10/02/2025	APWS Task ID: 11E544EB5C844D7684FAA68038765DA7	APWS Project ID: 3C81EC5B35694B048CB47E87D0ED8B65
Procedure: RNAV (GPS) Y RWY 20L AMDT 3		Enroute: NO	Specialist: Hardison, Dustin		Agreement Number:
Airport ID: KBNA			Airport City: NASHVILLE		State: TN
Facility ID:	Facility Type:	Flight Inspection Remark Type: New FC Slot			

Procedure Comments:  
DEVELOPED WITH ACTIVE DATA.

Contact Rake McGraw AJV-A422  
(405)597-8711

08/20/25: THIS IS AN UPDATED COPY OF THE FORM DEVELOPED ON 05/06/25.  
MRNDA 8260-2  
1. CHANGED FAC 1 AND 2 MRA FROM 6000-5000  
2. CHANGED I-SSX LOC/DME ESV MIN ALTITUDE FROM 6000 TO 5000





# RNAV (GPS) Y RWY 20L

NASHVILLE INTL (BNA)

WAAS CH <b>49013</b> <b>W20D</b>	APP CRS <b>201°</b>	Rwy Ldg <b>8000</b> TDZE <b>551</b> Apt Elev <b>599</b>
--	------------------------	---

RNP APCH - GPS.

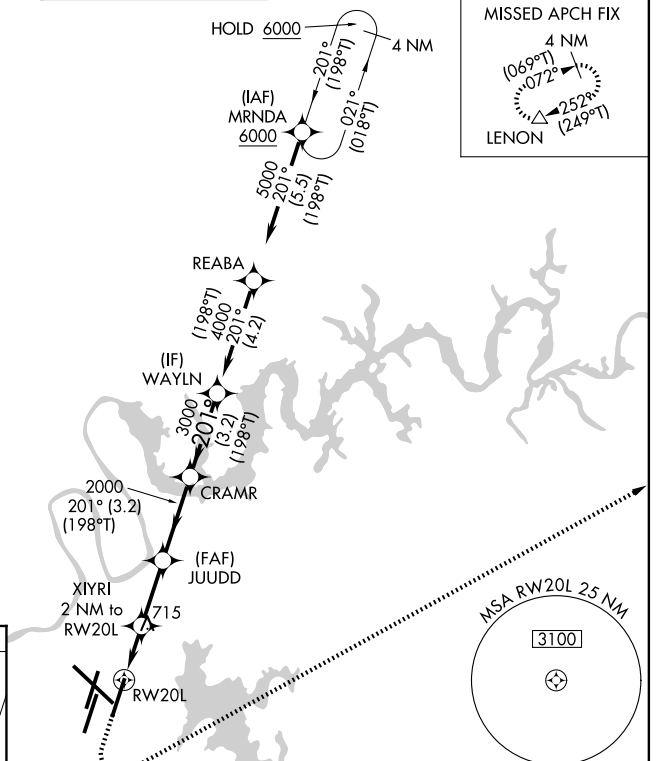
**⚠** For uncompensated Baro-VNAV systems, LNAV/VNAV NA below -10°C or above 54°C. Simultaneous approach authorized. LNAV procedure NA during simultaneous operations. Use of FD or AP providing RNAV track guidance required during simultaneous operations. \*RVR 1800 authorized with use of FD or AP or HUD to DA.

MALS/R

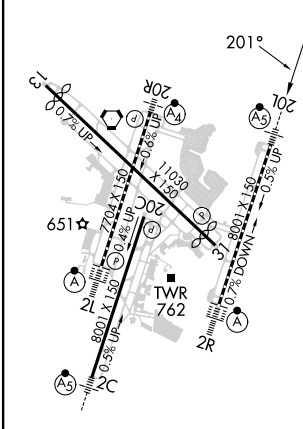
MISSED APPROACH:  
Climb to 1300, then climbing left turn to 4000 direct LENON and hold.

D-ATIS <b>135.1</b>	NASHVILLE APP CON <b>118.4 360.7</b>	NASHVILLE TOWER <b>118.6 257.8</b>	GND CON <b>121.9 348.6</b>	CLNC DEL <b>126.05</b>	CPDLC
------------------------	---	---------------------------------------	-------------------------------	---------------------------	-------

**PROTOTYPE-NOT FOR NAVIGATION**



ELEV 599	<b>D</b>	TDZE 551
----------	----------	----------



	LENON	JUDD	CRAMR	WAYLN
	4000	2000	3000	4000
	1.2 NM to RW20L	2 NM to RW20L	3.2 NM	3.2 NM
	1220	2000	3000	4000
	1.2 NM	0.8 NM	2.5 NM	3.2 NM
CATEGORY	A	B	C	D
LPV DA*		751/24	200 (200-1/2)	
LNAV/VNAV DA		879/26	328 (300-1/2)	
LNAV MDA	980/24	429 (400-1/2)	980/40	429 (400-3/4)
CIRCLING	1100-1 501 (600-1)	1120-1 521 (600-1)	1200-1 3/4 601 (700-1 3/4)	1380-2 1/2 781 (800-2 1/2)

GP 3.00°  
TCH 55

WAAS CH <b>49013</b> <b>W20D</b>	APP CRS <b>201°</b>	Rwy Idg <b>8000</b> TDZE <b>551</b> Apt Elev <b>599</b>
--	------------------------	---

**OLD**

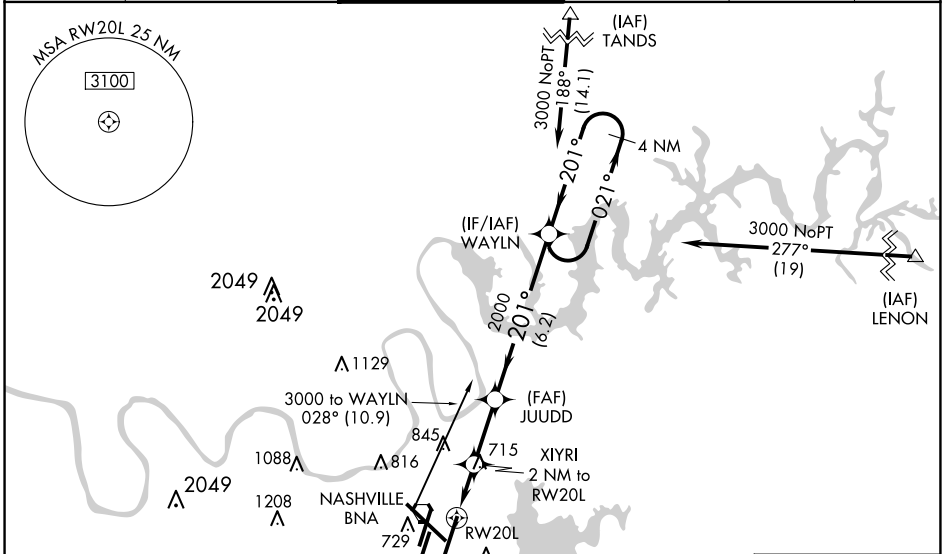
# RNAV (GPS) Y RWY 20L

NASHVILLE INTL (BNA)

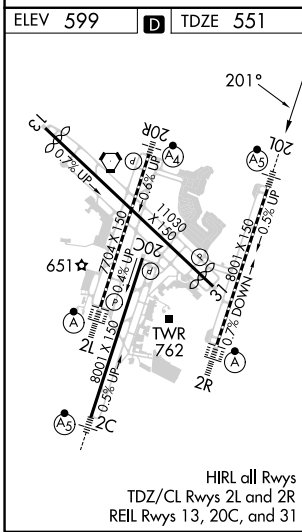
**⚠** For uncompensated Baro-VNAV systems, procedure NA below -11°C (13°F) or above 54°C (130°F). DME/DME RNP-0.3 NA. Simultaneous approach authorized with Rwy 20R. LNAV procedure NA during simultaneous operations. Use of FD or AP providing RNAV track guidance required during simultaneous operations. For inop MALS/R, increase LNAV/VNAV all Cats visibility to 1%. \*\* RVR 1800 authorized with use of FD or AP or HUD to DA.

**MALS/R**  
  
**MISSED APPROACH:**  
Climb to 1300 then climbing left turn to 4000 direct CENOP and hold.

D-ATIS <b>135.1</b>	NASHVILLE APP CON <b>118.4 360.7</b>	NASHVILLE TOWER <b>118.6 257.8</b>	GND CON <b>121.9 348.6</b>	CLNC DEL <b>126.05</b>	CPDLC
------------------------	---	---------------------------------------	-------------------------------	---------------------------	-------



ELEV 599	<b>D</b>	TDZE 551
----------	----------	----------



1300	4000	CENOP	WAYLN 4 NM Holding Pattern
*LNAV only.			
*1.2 NM to RW20L			
RW20L	XIYRI 2 NM to RW20L	JUUDD 2000	WAYLN 4 NM Holding Pattern
1.2 NM	-0.8 NM	-2.4 NM	-6.2 NM
021° → 3000			
← 201°			
GP 3.00° TCH 47			

CATEGORY	A	B	C	D
LPV DA	** 751/24 200 (200-½)			
LNAV/VNAV DA	1025/58 474 (500-1¼)			
LNAV MDA	980/24	429 (400-½)	980/40	429 (400-¾)
<b>C</b> CIRCLING	1100-1 501 (600-1)	1120-1 521 (600-1)	1200-1¾ 601 (700-1¾)	1380-2½ 781 (800-2½)

SE-1, 17 APR 2025 to 15 MAY 2025

SE-1, 17 APR 2025 to 15 MAY 2025

FT  
IN

100000

200000

300000

400000

200000

400000

KBNA, NASHVILLE INTL, NASHVILLE, TN  
RNAV (GPS) Y RWY 20L, AMDT 3  
1:500,000

MRNDA TOWER (1506)  
47-000250

Initial MRNDA to REABA TERRAIN+AAO (1155)  
TPO

Initial REABA to WAYLN TOWER (1025)  
47-002244

Intermediate WAYLN to CRAMR  
TERRAIN+AAO (853) TP100

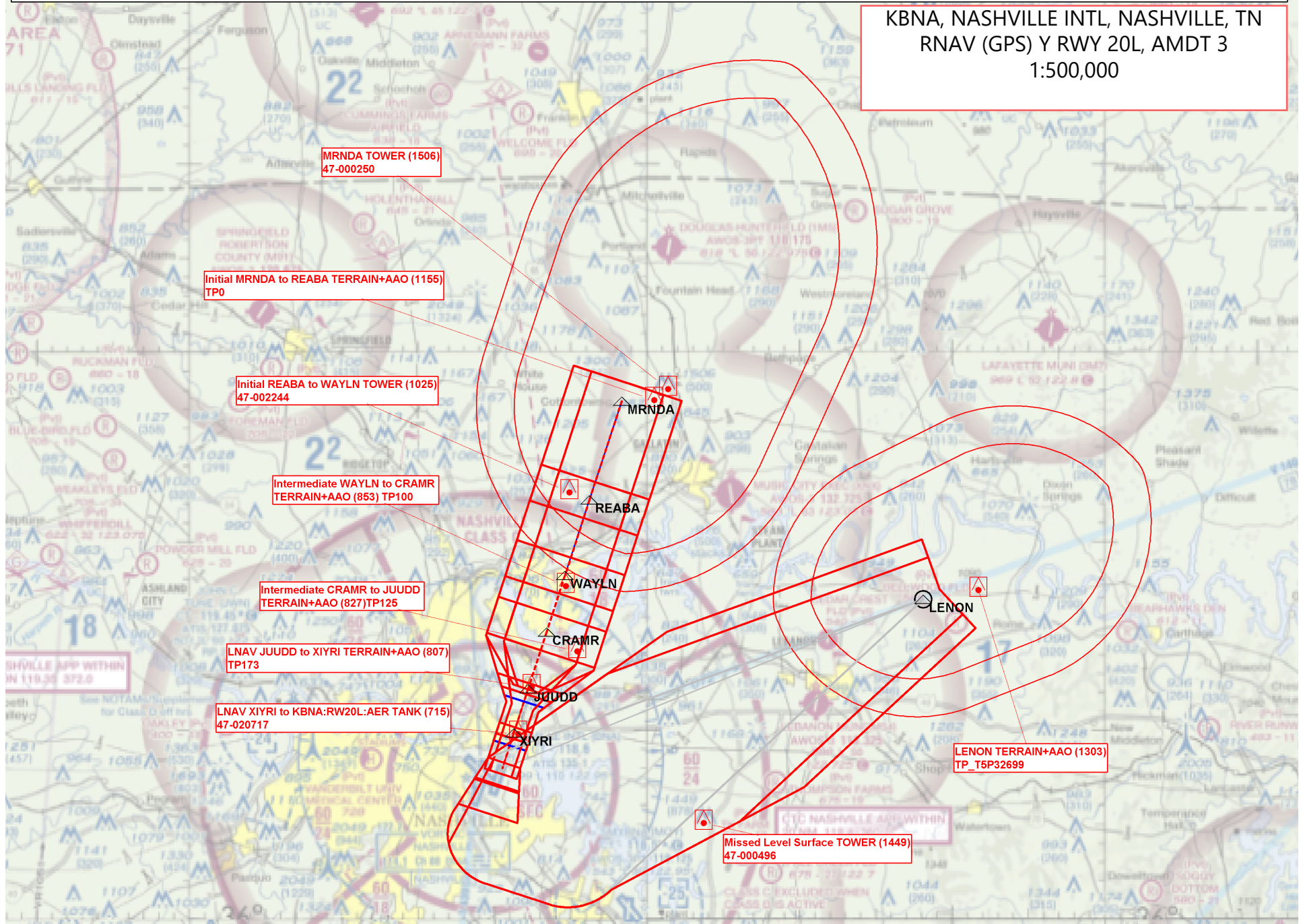
Intermediate CRAMR to JUUDD  
TERRAIN+AAO (827) TP125

LNAV JUUDD to XIYRI TERRAIN+AAO (807)  
TP173

LNAV XIYRI to KBNA:RW20L:AER TANK (715)  
47-020717

LENON TERRAIN+AAO (1303)  
TP\_T5P32699

Missed Level Surface TOWER (1449)  
47-000496



FT  
IN

20000

40000

60000

80000

500000

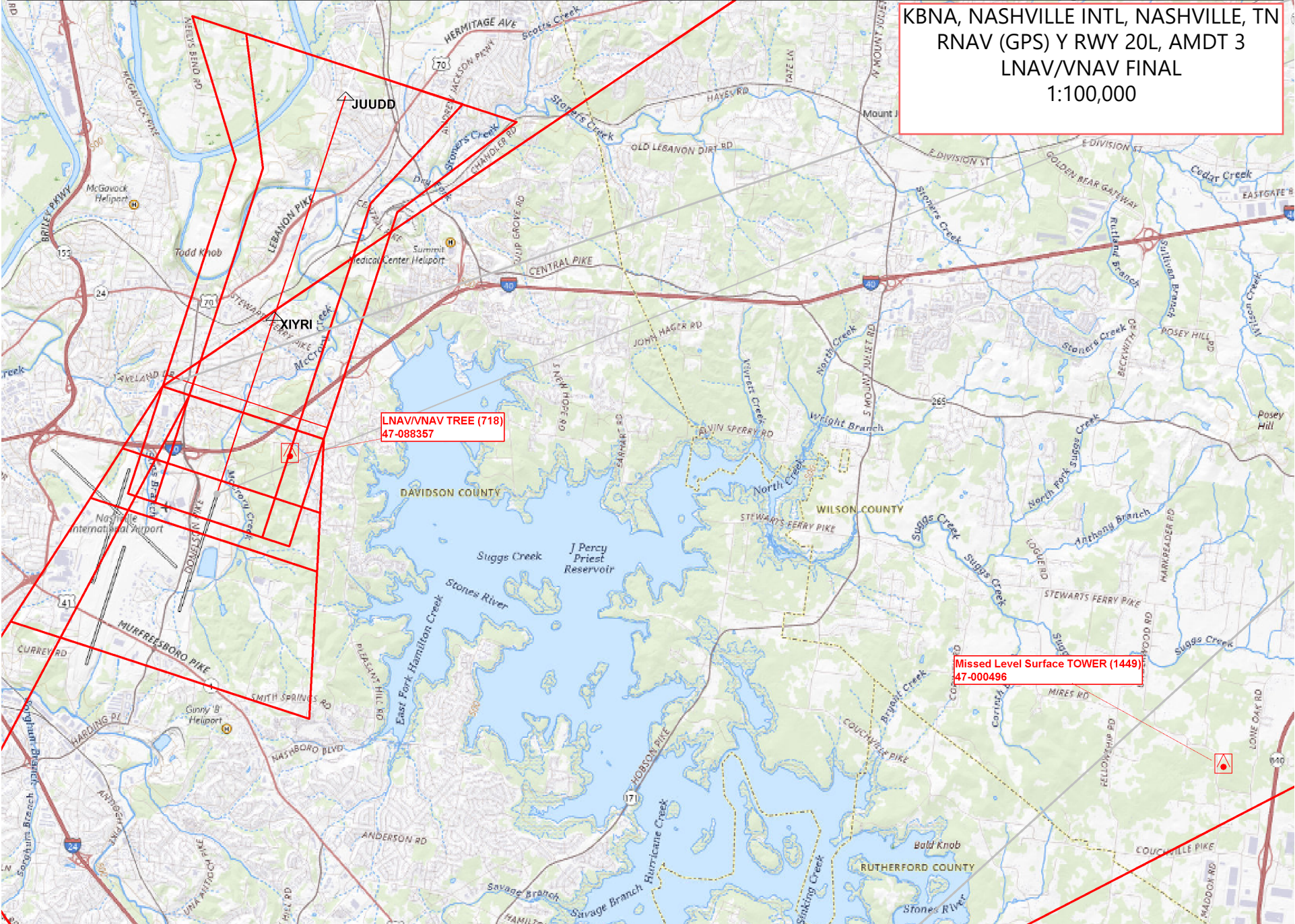
KBNA, NASHVILLE INTL, NASHVILLE, TN  
RNAV (GPS) Y RWY 20L, AMDT 3  
LPV FINAL  
1:100,000



Missed Level Surface TOWER (1449)  
47-000496



KBNA, NASHVILLE INTL, NASHVILLE, TN  
RNAV (GPS) Y RWY 20L, AMDT 3  
LNAV/VNAV FINAL  
1:100,000



LNAV/VNAV TREE (718)  
47-088357

Missed Level Surface TOWER (1449)  
47-000496



JUDD

XIYRI

LNAV/VNAV TREE (718)  
47-088357

Missed Level Surface TOWER (1449)  
47-000496

JUDD

XIYRI

LNAV/VNAV TREE (718)  
47-088357

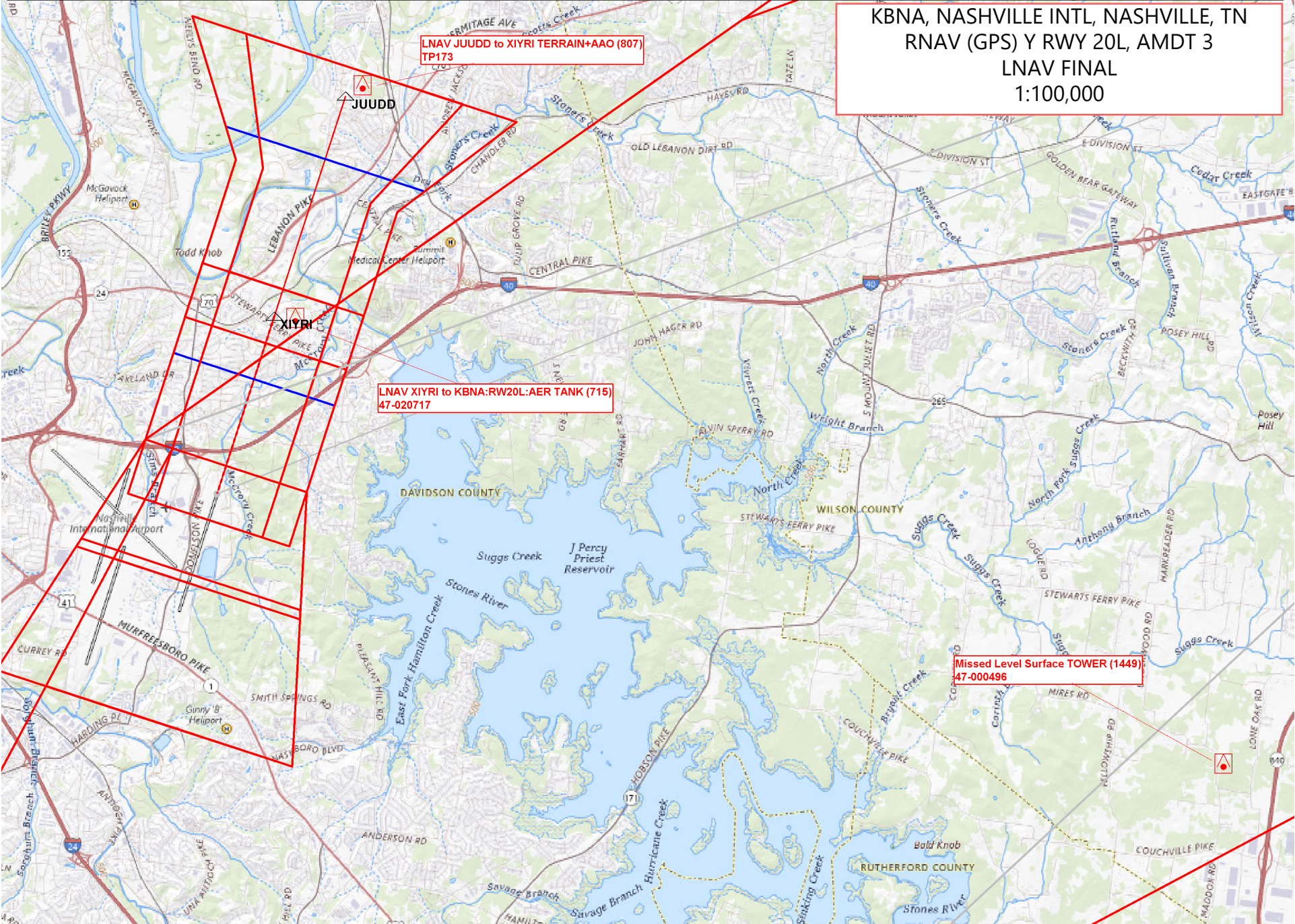
Missed Level Surface TOWER (1449)  
47-000496

KBNA, NASHVILLE INTL, NASHVILLE, TN  
RNAV (GPS) Y RWY 20L, AMDT 3  
LNAV FINAL  
1:100,000

LNAV JUUDD to XIYRI TERRAIN+AAO (807)  
TP173

LNAV XIYRI to KBNA:RW20L:AER TANK (715)  
47-020717

Missed Level Surface TOWER (1449)  
47-000496



FT  
IN

20000

40000

500000

KBNA, NASHVILLE INTL, NASHVILLE, TN  
RNAV (GPS) Y RWY 20L, AMDT 3  
CIRCLING  
1:100,000

Circling CAT B TOWER (816)  
47-000499

Circling CAT C TOWER (850)  
47-024931

JUDD

XIYRI

DAVIDSON COUNTY

Circling CAT D TERRAIN+AAO (1073)  
TPCirclingCatD\_6896

Circling CAT A TREE (774)  
47-090301

