

Flight Procedures Cover Page	Task Action: Abbreviated Amendment	Task Type: IAP	Estimated Chart Date: 09/05/2024	APWS Task ID: 1394B0FA8E1241A28C20DFF5CB049CCE	APWS Project ID: 5D2352028F494E908D736A6E572A3112
Procedure: RNAV (GPS) RWY 35 AMDT 1A		Enroute: NO	Specialist: Darden, Michael		Agreement Number:
Airport ID: KCON			Airport City: CONCORD		State: NH
Facility ID:	Facility Type:	Flight Inspection Remark Type:			

Procedure Comments:

ACTIVE DATA USED FOR KCON AIRPORT AND RUNWAYS

PROCESSED IAW TECHNICAL SUPPORT GROUP (AJF-17) MEMO DATED 07/07/2021 GUIDANCE FOR PROCEDURAL CHANGES REQUIRING FLIGHT INSPECTION/VALIDATION

CON VOR MON NON-DEPENDENCY.

CLEARs T-NOTAM 3/4166.

CONTACT DAVID DANNER, AJV-A421, 405-954-5077.



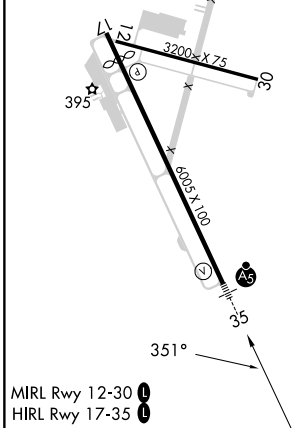
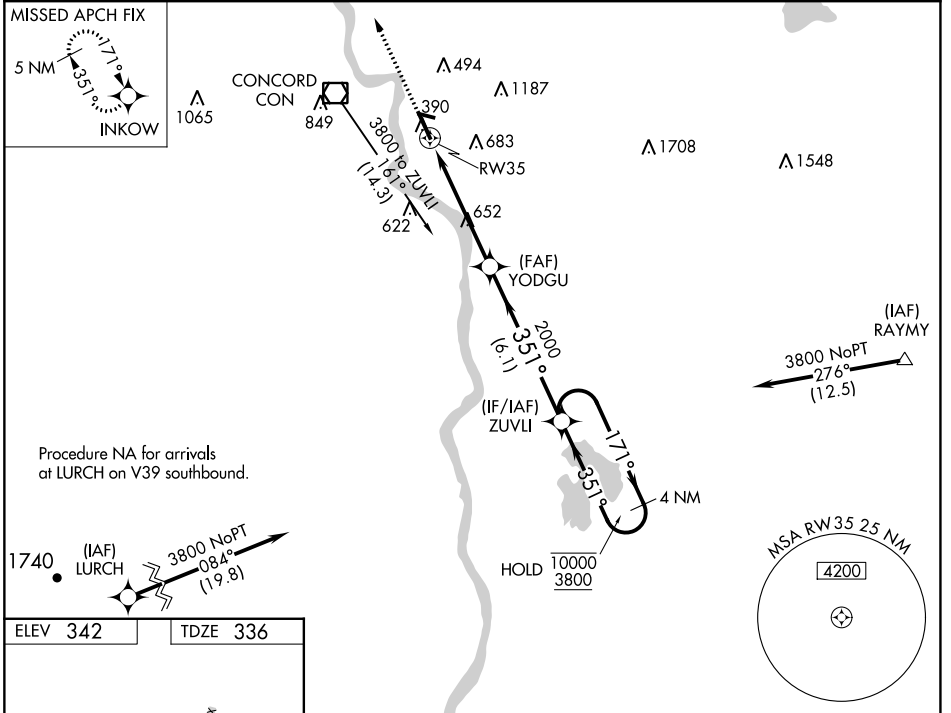
WAAS CH 90112 W35A	APP CRS 351°	Rwy ldg 6005 TDZE 336 Apt Elev 342
--	------------------------	---

RNAV (GPS) RWY 35

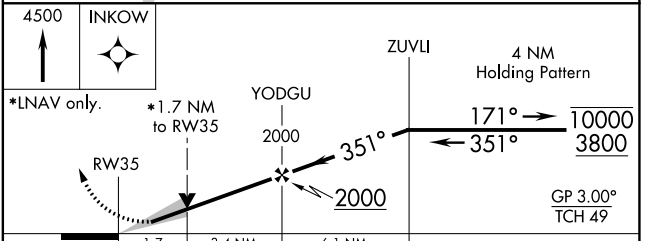
CONCORD MUNI (CON)

RNP APCH.	MALSR	MISSED APPROACH: Climb to 4500 direct INKOW and hold, continue climb-in-hold to 4500.
<p>⚠ Circling Rwy 12, 17, 30 NA at night. For inop ALS, increase LNAV/VNAV visibility to 1¾ SM, LNAV Cats C and D visibility to 1¾ SM.</p>		

ASOS 132.325	BOSTON APP CON 127.35 269.075	CLNC DEL 133.65	UNICOM 122.7 (CTAF) 0
------------------------	---	---------------------------	---------------------------------



CONCORD, NEW HAMPSHIRE
Amdt 1 17JUN21



4500 INKOW				
*LNAV only.	*1.7 NM to RW35			
YODGU	ZUVLI 4 NM Holding Pattern			
RW35	171° → 10000 ← 351° 3800			
	GP 3.00° TCH 49			
CATEGORY	A	B	C	D
LPV DA	586-½ 250 (300-½)			
LNAV/VNAV DA	967-1¾ 631 (700-1¾)			
LNAV MDA	940-½ 604 (600-½)		940-1¾ 604 (600-1¾)	
C CIRCLING	940-1 598 (600-1)	1080-1 738 (800-1)	1500-3 1158 (1200-3)	