

Flight Procedures Cover Page	Task Action: Abbreviated Amendment	Task Type: IAP	Estimated Chart Date: 05/14/2026	APWS Task ID: 15EB525AC0DD4512A9A849E899BFB86A	APWS Project ID: 185F6D266BF44D9D81EB013C464E28F2
Procedure: ILS OR LOC RWY 1 AMDT 2A		Enroute: NO	Specialist: Gorman, Barbara		Agreement Number:
Airport ID: KSAW			Airport City: MARQUETTE		State: MI
Facility ID: SOU	Facility Type: ILS	Flight Inspection Remark Type:			

**Procedure Comments:**

PROCESSED IAW TECHNICAL SUPPORT GROUP (AJF-17) MEMO DATED 07/07/2021 GUIDANCE FOR PROCEDURAL CHANGES REQUIRING FLIGHT INSPECTION/VALIDATION  
ACTIVE DATA USED FOR AIRPORT AND RUNWAY.  
REMOVE NOTAM FDC 5/5892.  
CONTACT: CASIMIR TABAKA 405.954.7931

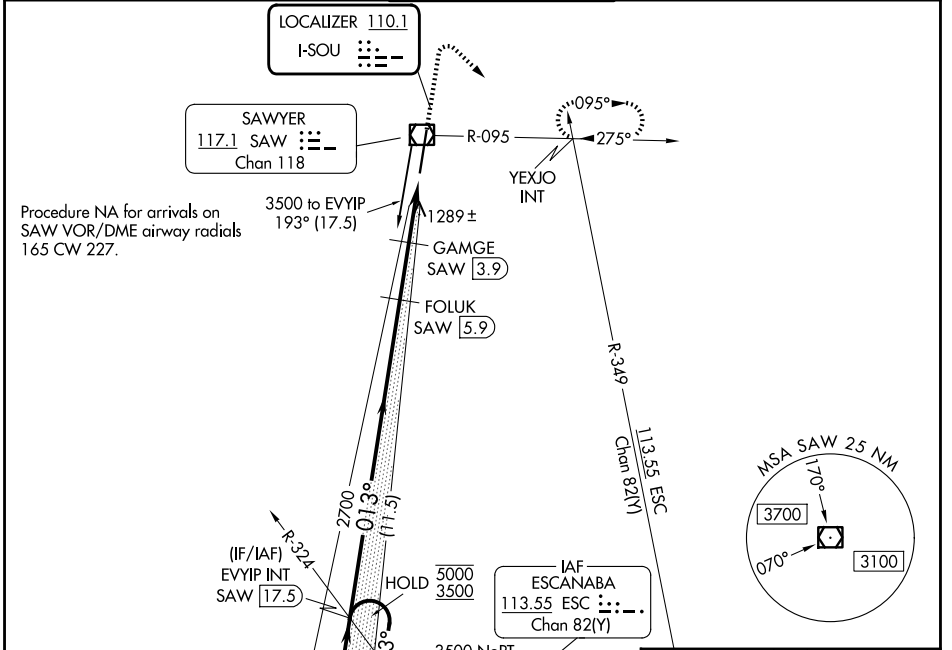


LOC I-SOU <b>110.1</b>	APP CRS <b>013°</b>	Rwy Ldg TDZE Apt Elev	<b>9072</b> <b>1180</b> <b>1205</b>
---------------------------	------------------------	-----------------------------	---

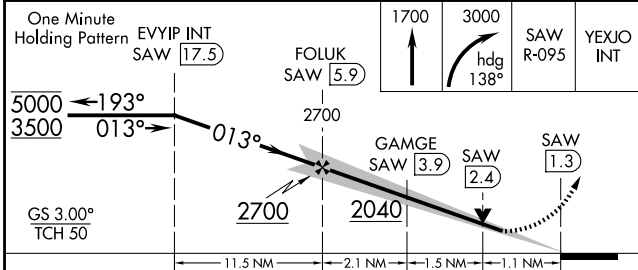
**ILS or LOC RWY 1**  
MARQUETTE/SAWYER RGNL (S.A.W)

DME required for LOC only.		MALSR	MISSED APPROACH: Climb to 1700 then climbing right turn to 3000 on heading 138° and on SAW VOR/DME R-095 to YEXJO INT and hold, continue climb-in-hold to 3000.	
NA Autopilot coupled approach NA below 1360 MSL.		AS		

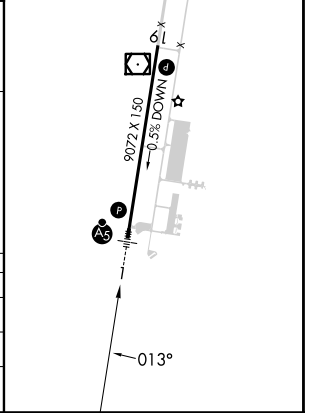
AWOS-3PT <b>118.375</b>	MINNEAPOLIS CENTER <b>119.1 290.2</b>	SAWYER TOWER ★ <b>119.975 (CTAF) 0</b>	GND CON <b>121.65</b>	UNICOM <b>122.7</b>
----------------------------	--	---	--------------------------	------------------------



ELEV 1205	TDZE 1180
HIRL Rwy 1-19	REL Rwy 19



Category	A	B	C	D
S-ILS 1	1380-½		200 (200-½)	
S-LOC 1	1580-½		400 (400-½)	
			1580-⅝	
			400 (400-⅝)	
CIRCLING	1680-1		475 (500-1)	
			1820-1¾	
			615 (700-1¾)	
			1820-2	
			615 (700-2)	



EC-1, 02 OCT 2025 to 30 OCT 2025

EC-1, 02 OCT 2025 to 30 OCT 2025