

Flight Procedures Cover Page	Task Action: Abbreviated Amendment	Task Type: SID	Estimated Chart Date: 06/15/2023	APWS Task ID: 15ED932362FD4F2DA06F7B1718F9EED3	APWS Project ID: 65853B8124E54315B12BEDC723B4AED3
Procedure: QUAKER EIGHT DEPARTURE		Enroute: YES	Specialist: Barnes, Kellie		Agreement Number:
Airport ID: KGSO			Airport City: GREENSBORO		State: NC
Facility ID:	Facility Type:	Flight Inspection Remark Type:			

**Procedure Comments:**

PROCESSED IAW TECHNICAL SUPPORT GROUP (AJF-17) MEMO DATED 07/07/2021, SUBJECT: GUIDANCE FOR PROCEDURAL CHANGES REQUIRING FLIGHT INSPECTION/VALIDATION.

CONTACT DAVID DANNER 405-954-5077



# QUAKER SEVEN DEPARTURE

# OLD

GREENSBORO, NORTH CAROLINA

D-ATIS 128.55  
 CLNC DEL 121.75  
 GND CON  
 121.9 348.6  
 GREENSBORO TOWER  
 119.1 290.325  
 GREENSBORO DEP CON  
 124.35 269.225 (250°-049°)  
 126.6 327.075 (050°-249°)

LYNCHBURG  
 109.2 LYH   
 Chan 29  
 N37°15.27' - W79°14.18'  
 L-26-36, H-10-12

RICHMOND  
 114.1 RIC   
 Chan 88  
 L-34-36, H-10-12

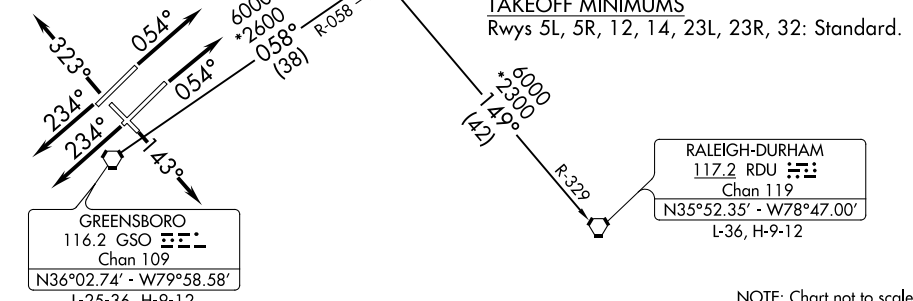
SOUTH BOSTON  
 110.4 SBV   
 Chan 41  
 N36°40.50' - W79°00.87'  
 L-26-36, H-12

ROANOKE  
 109.4 ROA   
 Chan 31  
 N37° 20.61'  
 W80° 04.22'  
 L-26, H-10-12

**TOP ALTITUDE:  
 ASSIGNED BY ATC**

NOTE: RADAR required.  
 NOTE: RICHMOND TRANSITION requires DME.

**TAKEOFF MINIMUMS**  
 Rwy's 5L, 5R, 12, 14, 23L, 23R, 32: Standard.



NOTE: Chart not to scale.

## DEPARTURE ROUTE DESCRIPTION

TAKEOFF RUNWAYS 5L/R: Climb heading 054°, thence. . . .  
TAKEOFF RUNWAY 14: Climb heading 143°, thence. . . .  
TAKEOFF RUNWAYS 23L/R: Climb heading 234°, thence. . . .  
TAKEOFF RUNWAY 32: Climb heading 323°, thence. . . .  
 . . . maintain altitude assigned by ATC. RADAR vectors will be provided to intercept assigned radial associated with the issued transition, or if no transition assigned, RADAR vectors will be provided to the appropriate fix. Expect requested altitude/flight level 10 minutes after departure.

LYNCHBURG TRANSITION (QUAK7.LYH): From over GSO VORTAC on GSO R-058 to JEANY INT then on LYH R-191 to LYH VOR/DME.  
RALEIGH/DURHAM TRANSITION (QUAK7.RDU): From over GSO VORTAC on GSO R-058 to JEANY INT then on RDU R-329 to RDU VORTAC.  
RICHMOND TRANSITION (QUAK7.RIC): From over GSO VORTAC on GSO R-058 to JEANY INT then on GSO R-058 and RIC R-246 to RIC VOR/DME.  
ROANOKE TRANSITION (QUAK7.ROA): From over GSO VORTAC on GSO R-058 to JEANY INT then on ROA R-152 to ROA VOR/DME.  
SOUTH BOSTON TRANSITION (QUAK7.SBV): From over GSO VORTAC on GSO R-058 to JEANY INT then on SBV R-229 to SBV VORTAC.

# QUAKER SEVEN DEPARTURE

GREENSBORO, NORTH CAROLINA

PIEDMONT TRIAD INTL (GSO)

SE-2: 29 DEC 2022 to 26 JAN 2023

SE-2: 29 DEC 2022 to 26 JAN 2023