

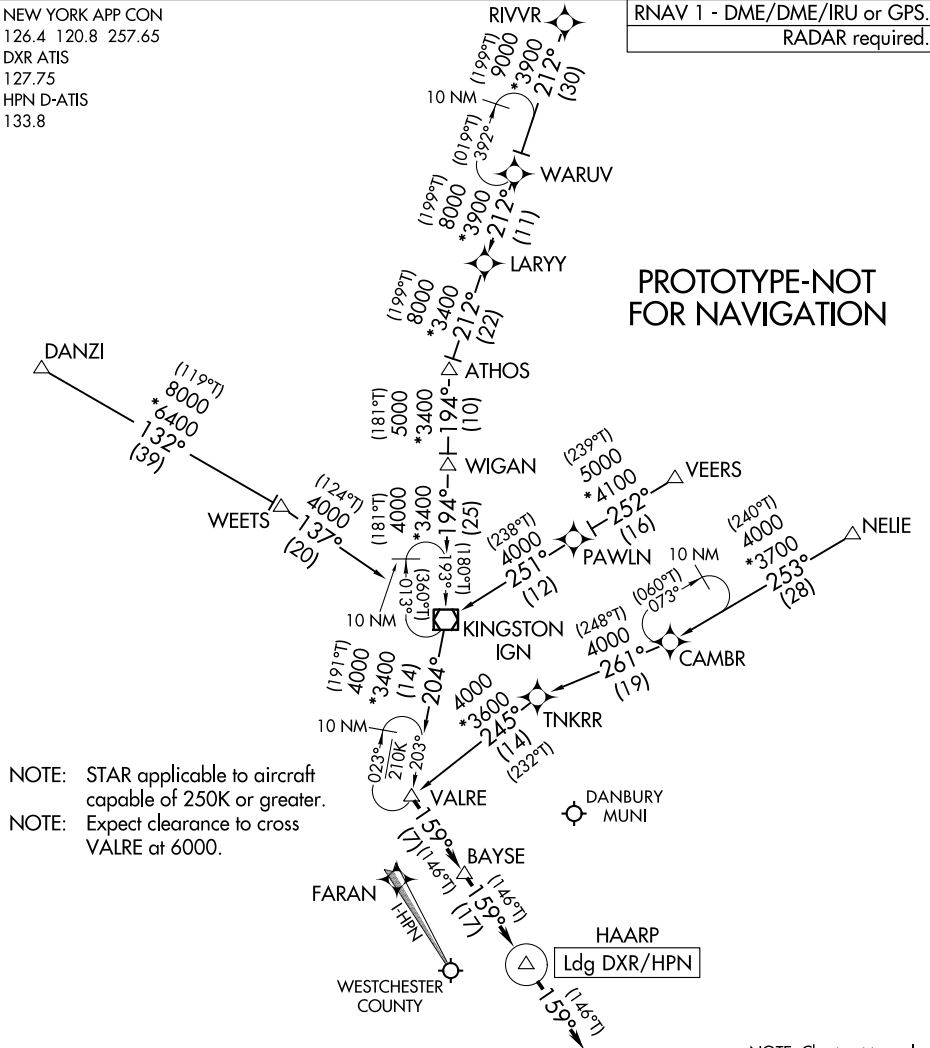
VALRE ONE ARRIVAL (RNAV)

WHITE PLAINS, NEW YORK

NEW YORK APP CON
 126.4 120.8 257.65
 DXR ATIS
 127.75
 HPN D-ATIS
 133.8

RNAV 1 - DME/DME/IRU or GPS.
 RADAR required.

PROTOTYPE-NOT
 FOR NAVIGATION



NOTE: Chart not to scale.

ARRIVAL ROUTE DESCRIPTION

- DANZI TRANSITION (DANZI.VALRE1)
- NELIE TRANSITION (NELIE.VALRE1)
- RIVVR TRANSITION (RIVVR.VALRE1)
- VEERS TRANSITION (VEERS.VALRE1)
- WIGAN TRANSITION (WIGAN.VALRE1)

LANDING ALL AIRPORTS: From VALRE on track 159° to BASYE, then on track 159° HAARP, then on track 159°. Expect RADAR vectors to final approach course.

VALRE ONE ARRIVAL (RNAV)

WHITE PLAINS, NEW YORK