

Flight Procedures Cover Page	Task Action: P-NOTAM	Task Type: IAP	Estimated Chart Date: 10/29/2026	APWS Task ID: 17C9BE40CF324F2585CA76DD3140EDC5	APWS Project ID: 0213DAD719DC4FED8CA8E404B9A3FEC2
Procedure: RNAV (GPS) RWY 7 AMDT 1E		Enroute: NO	Specialist: Johnson, Timothy		Agreement Number:
Airport ID: KTOL			Airport City: TOLEDO		State: OH
Facility ID:	Facility Type:	Flight Inspection Remark Type:			

**Procedure Comments:**

Visibility Initiative (Garmin) - Update IAP visibility minimums IAW Order 8260.3, Chapter 3, Section 3-3. Visibility Minimums.

PROCESSED IAW TECHNICAL SUPPORT GROUP (AJF-17) MEMO DATED 07/07/2021, SUBJECT: GUIDANCE FOR PROCEDURAL CHANGES REQUIRING FLIGHT INSPECTION/VALIDATION.

CONTACT: CASEY HILL (405) 954-0624.

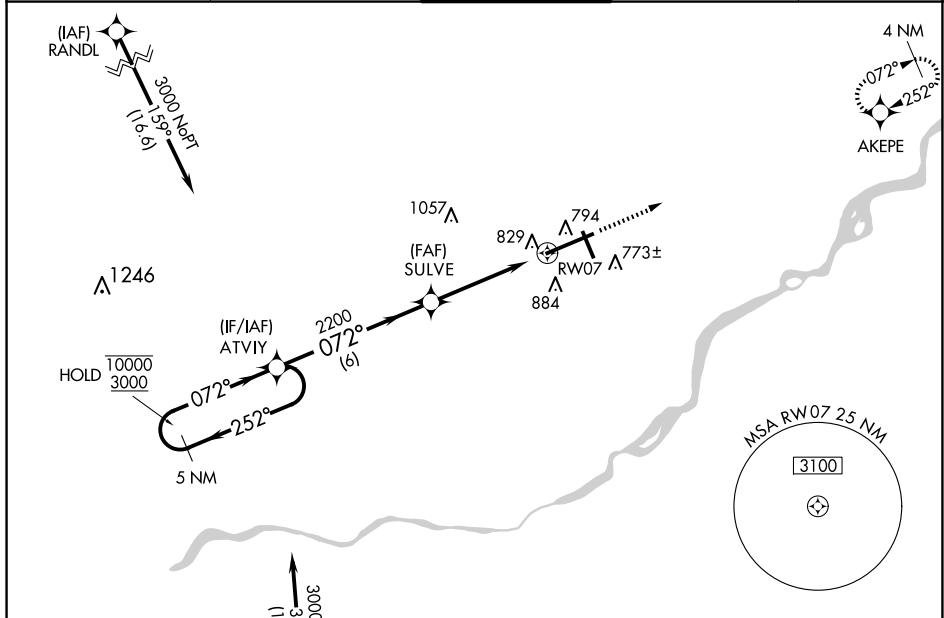


WAAS CH <b>99399</b> <b>W07A</b>	APP CRS <b>072°</b>	Rwy Ldg TDZE Apt Elev <b>10599</b> <b>683</b> <b>683</b>
--	------------------------	---

**RNAV (GPS) RWY 7**  
EUGENE F KRANZ TOLEDO EXPRESS (TOL)

RNP APCH.	<p>⚠ For uncompensated Baro-VNAV systems, LNAV/VNAV NA below -17°C or above 52°C.</p> <p>⚠ For inop ALS, increase LPV all Cats visibility to RVR 5000. Increase LNAV/VNAV Cat E and LNAV Cat E visibility to 1½ SM.</p>	ALSf-2 	MISSED APPROACH: Climb to 3000 direct AKEPE and hold.
-----------	---	------------	---

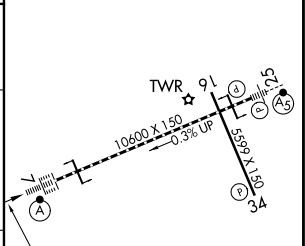
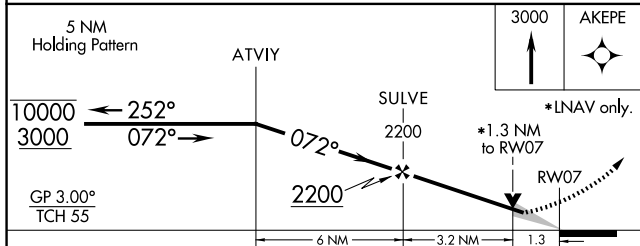
ATIS <b>118.75 290.225</b>	TOLEDO APP CON <b>134.35 317.55</b>	TOLEDO TOWER <b>118.1 285.4</b>	GND CON <b>121.9 348.6</b>	CLNC DEL <b>121.75 348.6</b>
-------------------------------	--	------------------------------------	-------------------------------	---------------------------------



EC-2, 16 APR 2026 to 14 MAY 2026

EC-2, 16 APR 2026 to 14 MAY 2026

ELEV 683	<b>D</b>	TDZE 683
----------	----------	----------



CATEGORY	A	B	C	D	E
LPV DA		1018/40	335 (400-¾)		
LNAV/VNAV DA		1129/50	446 (500-1)		
LNAV MDA	1140/24	457 (500-½)	1140/40 457 (500-¾)	1140/50	457 (500-1)
<b>C</b> CIRCLING	1200-1	517 (600-1)	1300-1¾ 617 (700-1¾)	1360-2¼ 677 (700-2¼)	1360-2½ 677 (700-2½)

TDZ/CL Rwy 7  
HIRL Rwy 7-25  
MIRL Rwy 16-34  
REIL Rws 16 and 34