

Flight Procedures Cover Page	Task Action: P-NOTAM	Task Type: IAP	Estimated Chart Date: 07/09/2026	APWS Task ID: 181195571919409BBFFA65D0344F1510	APWS Project ID: 177629F307BE41ECA69CAA253B52A8B3
Procedure: RNAV (GPS) Y RWY 13 AMDT 4C		Enroute: NO	Specialist: Johnson, Timothy		Agreement Number:
Airport ID: KACY			Airport City: ATLANTIC CITY		State: NJ
Facility ID:	Facility Type:	Flight Inspection Remark Type:			

**Procedure Comments:**

Visibility Initiative (Garmin) - Update IAP visibility minimums IAW Order 8260.3, Chapter 3, Section 3-3. Visibility Minimums.

PROCESSED IAW TECHNICAL SUPPORT GROUP (AJF-17) MEMO DATED 07/07/2021, SUBJECT: GUIDANCE FOR PROCEDURAL CHANGES REQUIRING FLIGHT INSPECTION/VALIDATION.

CONTACT: CASEY HILL (405) 954-0624.

QUALITY  
6 SN 2/23/26  
CHECKED

QUALITY  
9  
CHECKED  
BEGUE

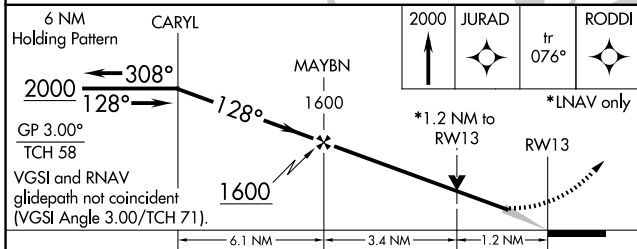
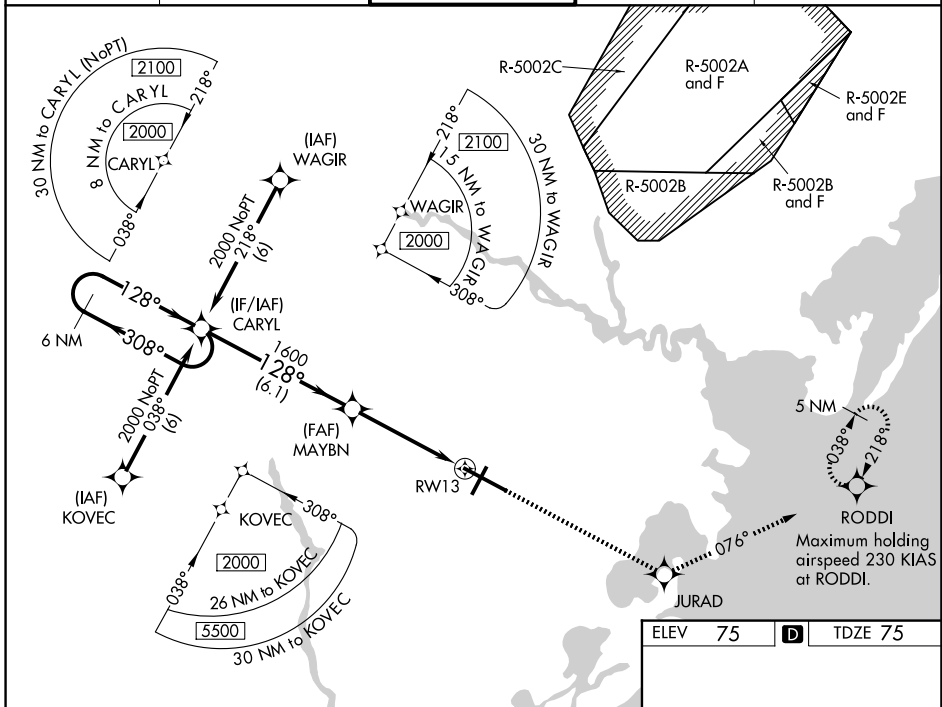
WAAS CH <b>45513</b> <b>W13A</b>	APP CRS <b>128°</b>	Rwy Ldg <b>10001</b> TDZE <b>75</b> Apt Elev <b>75</b>
--	------------------------	--

# RNAV (GPS) Y RWY 13

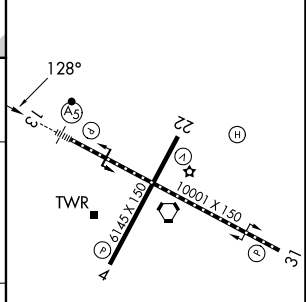
ATLANTIC CITY INTL (ACY)

RNP APCH - GPS	MALSRL AS	MISSED APPROACH: Climb to 2000 direct JURAD and on track 076° to RODDI and hold.
<p>▼ For inoperative MALSRL, increase LPV Cat E visibility to RVR 4000, LNAV/VNAV Cat E visibility to 1½, and LNAV Cat D visibility to RVR 6000, Cat E visibility to 1½. For uncompensated Baro-VNAV systems, LNAV/VNAV NA below -15°C (5°F) or above 48°C (118°F).</p>		

ATIS <b>125.725 316.15</b>	ATLANTIC CITY APP CON <b>124.6 327.125</b>	ATLANTIC CITY TOWER <b>120.3 239.0</b>	GND CON <b>121.9 284.6</b>	CLNC DEL <b>127.85 353.775</b>
-------------------------------	---	---	-------------------------------	-----------------------------------



ELEV 75	<b>D</b>	TDZE 75
---------	----------	---------



CATEGORY	A	B	C	D	E
LPV DA	275/18 200 (200-½)				
LNAV/VNAV DA	475/40 400 (400-¾)				
LNAV MDA	520/24 445 (500-½)	520/40 445 (500-¾)		520/50	445 (500-1)
CIRCLING	540-1 465 (500-1)	600-1 525 (600-1)	620-1½ 545 (600-1½)	640-2 565 (600-2)	760-2½ 685 (700-2½)

TDZ/CL Rwy 13  
HIRL Rwy 4-22 and 13-31  
REIL Rwy 31

NE-2, 19 FEB 2026 to 19 MAR 2026

NE-2, 19 FEB 2026 to 19 MAR 2026