

Flight Procedures Cover Page	Task Action: Abbreviated Amendment	Task Type: IAP	Estimated Chart Date: 02/20/2025	APWS Task ID: 183C18BCD34B4418BA70406EEAB1F905	APWS Project ID: ADB34B32F4FF4A808582E18124B93D32
Procedure: ILS V RWY 13R AMDT 7B		Enroute: NO	Specialist: Johnson, Raymond		Agreement Number:
Airport ID: KDFW			Airport City: DALLAS-FORT WORTH		State: TX
Facility ID: LWN	Facility Type: ILS	Flight Inspection Remark Type:			

**Procedure Comments:**  
ACTIVE DATA USED FOR KDFW.  
PROCESSED IAW TECHNICAL SUPPORT GROUP (AJF-17) MEMO DATED 07/07/2021 GUIDANCE  
FOR PROCEDURAL CHANGES REQUIRING FLIGHT INSPECTION/VALIDATION.  
CONTACT ALLAN WILL (405)954-6103.

QUALITY  
9  
CHECKED  
BEGUE

QUALITY  
29  
CHECKED

# OLD

DALLAS-FORT WORTH, TEXAS

23334

LOC/DME I-LWN <b>109.5</b> Chan <b>32</b>	APP CRS <b>135°</b>	Rwy Idg <b>9300</b> TDZE <b>591</b> Apt Elev <b>607</b>
---	------------------------	---

## CONVERGING ILS RWY 13R

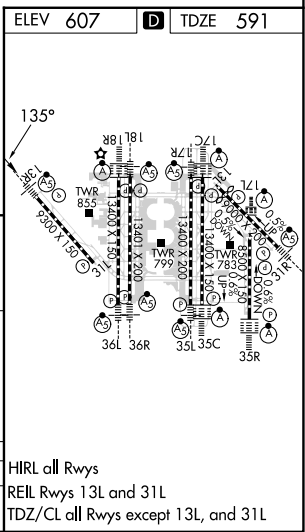
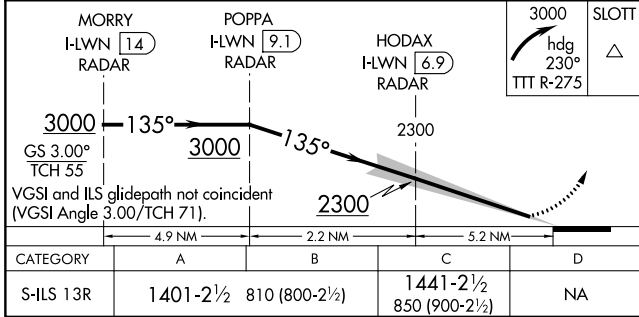
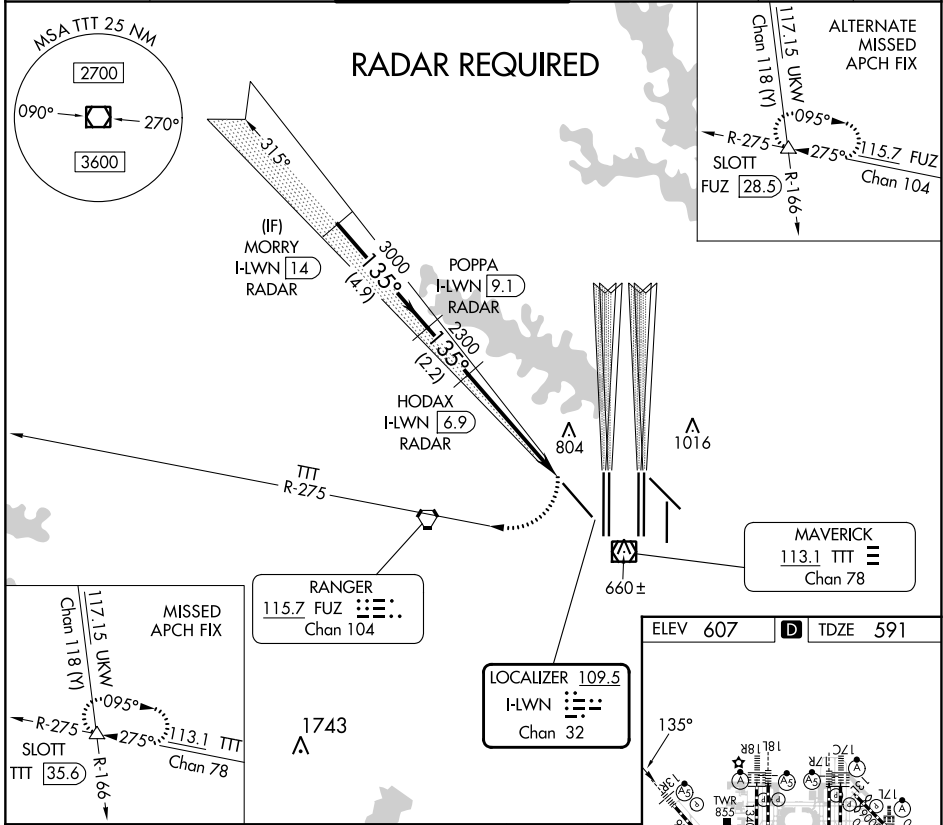
DALLAS-FORT WORTH INTL (DFW)

**⚠** Simultaneous converging approach authorized with Converging ILS Rwy 18L/R and Converging ILS Rwy 17C/R. For inop MALSR, increase ILS 13R all Cats visibility to 2 $\frac{3}{4}$ .



MISSED APPROACH: Climbing right turn to 3000 on heading 230° and TTT VOR/DME R-275 to SLOTT/TTT 35.6 DME and hold.

D-ATIS ARR <b>123.775</b> DEP <b>135.925</b>	REGIONAL APP CON <b>133.15 118.1</b>	DFW TOWER <b>126.55 127.5 EAST</b> <b>124.15 134.9 WEST</b>	GND CON <b>121.65 121.8 EAST</b> <b>121.85 WEST</b>	CLNC DEL <b>128.25</b>	CPDLC
--	---	---	---	---------------------------	-------



CATEGORY	A	B	C	D
S-ILS 13R	1401-2 $\frac{1}{2}$	810 (800-2 $\frac{1}{2}$ )	1441-2 $\frac{1}{2}$ 850 (900-2 $\frac{1}{2}$ )	NA

HIRL all Rws  
REIL Rws 13L and 31L  
TDZ/CL all Rws except 13L, and 31L

DALLAS-FORT WORTH, TEXAS  
Amdt 7A 18SEP14

# OLD

## CONVERGING ILS RWY 13R

SC-2, 18 APR 2024 to 16 MAY 2024

SC-2, 18 APR 2024 to 16 MAY 2024