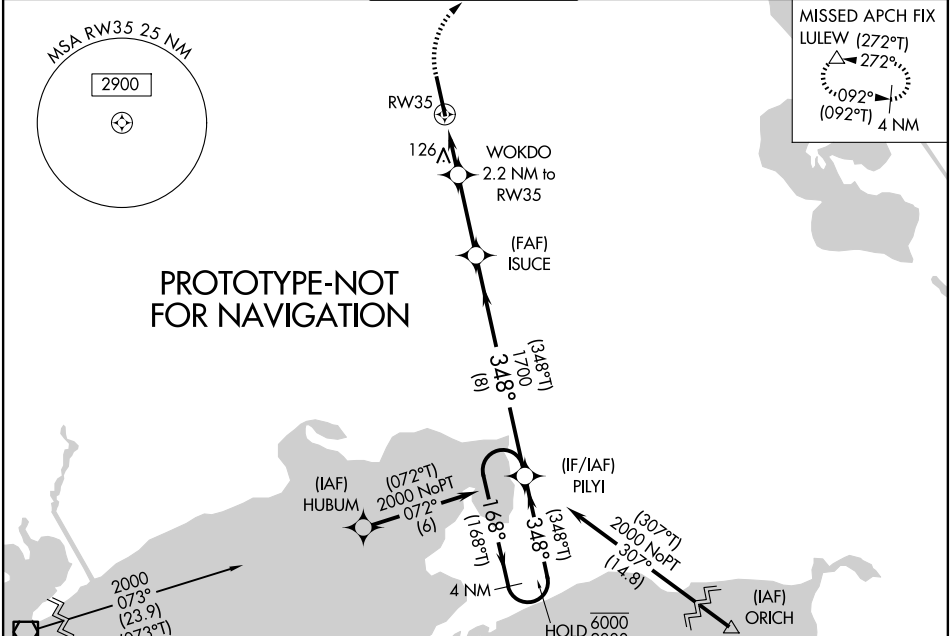


WAAS CH <b>40301</b> <b>W35A</b>	APP CRS <b>348°</b>	Rwy Ldg <b>8002</b> TDZE <b>21</b> Apt Elev <b>24</b>
--	------------------------	---

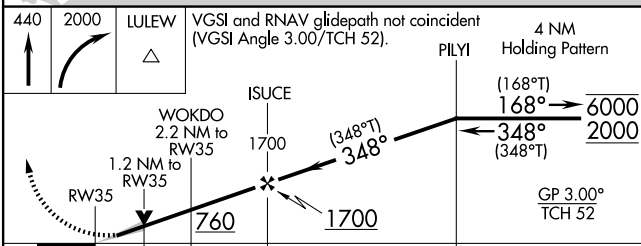
# RNAV (GPS) RWY 35

ACADIANA RGNL (A.R.A)

RNP APCH - GPS.		MALSR		MISSED APPROACH: Climb to 440 then climbing right turn to 2000 direct LULEW and hold.	
<p>▼ For uncompensated Baro-VNAV systems, LNAV/VNAV NA below -3°C or above 54°C. Circling NA to Rwy 17W and 35W. For inop ALS, increase LNAV/VNAV all Cats visibility to ½ SM and LNAV Cats C and D visibility to 1 ½ SM.</p>					
ASOS <b>133.325</b>	LAFAYETTE APP CON * <b>121.1 268.7</b>	ACADIANA TOWER * <b>125.0 (CTAF) 0 239.3</b>	GND CON <b>121.7</b>	UNICOM <b>122.95</b>	<b>122.7 0</b>



ELEV 24	D	TDZE 21
---------	---	---------



CATEGORY	A	B	C	D
LPV DA		221-½	200 (200-½)	
LNAV/VNAV DA		303-½	282 (300-½)	
LNAV MDA	440-½	419 (500-½)	440-¾	419 (500-¾)
CIRCLING	440-1 416 (500-1)	480-1 456 (500-1)	600-1½ 576 (600-1½)	680-2 656 (700-2)

